

MIDSHIP SECTION STEAM HOPIER BARGE

SHIP N 601

TO CLASS 100 A AT LLOYD'S

DIMENSIONS 115'0" B.P. 1'0" M.D. 11'0" M.D.

LLOYD'S SCANTLING NUMERALS

L 115 B 24 D 11

1ST LONGITUDINAL NO 1265 2ND LONGITUDINAL NO 4370

50 10.45 1 9.91

MINIMUM SCANTLING REQUIRED

EQUIPMENT

2 ANCHORS STOCKLESS 12 CWT EACH
1 ANCHOR EX STOCK 24 "
15 FATHOMS 1/2" STUD CHAIN CABLE
75 " 2" STEEL WIRE
100 " 4" MANILA

SCANTLING

IN WAY OF HOPPER WELL FRG 24 TO 44

FRAMES AT SIDE 4'-2 1/2" x 3" SPACED 22" APART
ON WELL
BEAMS IN WELL SIDES 15'-0" PLATE WITH 3" FLANGE TO DECK ON EVERY FR
STRONG BEAMS 3 OFF 8'-3 1/2" x 34" O.A.
FLOORS IN WAY OF WELL 2" PLATED 2" ON EDGE
DECK STRINGER PLATE 4'-0" x 3/4"
ANGLE 3'-3 1/2" x 32" FITTER INSIDE
CENTRE LINE BOX KEELSON AS PER PLAN
SIDE STRINGER ON TOP OF FRAMES 4'-3 1/2" x 30"
TO WELL SIDE FRAMES
WELL SIDE STRUTS SINGLE 4'-3 1/2" x 30" ON ALTERNATE FRG

RIVETING

ALL SHELL LANDING 2" BROAD SINGLE 3/8 RIVETED
ALL HOPPER WELL LANDING 3 1/2" BROAD DOUBLE 3/8 RIVETED
EPK, A, B, C, D, STRAKES 4 1/2" BROAD DOUBLE 3/8 RIVETED
ALL FORE & AFT
E, C, STRAKE DOUBLE RIVETED INSIDE BUTT STRAPS 8 BROAD 3/8 RIV
BULKHEAD CLEAR OF WELL BUTTS 2 1/2" BROAD SINGLE 3/8 RIVETED
HOPPER WELL STRAKES 4 1/2" BROAD DOUBLE 3/8 RIVETED
Box KEELSON BUTTS 4 1/2" BROAD DOUBLE 3/8 RIVETED
IN LANDING OF SHELL 4'-3 1/2" RIV BETWEEN FRG 81-82 RIV TWO FRG
OF HOPPER WELL SIDE 11 FRG 3/8 RIV BETWEEN FRG
AND 2 RIV THREE FRAMES
FRAMES REVERSE FRAMES & FLOORS 3/8 RIV 4 1/2" PITCH

SCANTLING

OUTSIDE HOPPER WELL

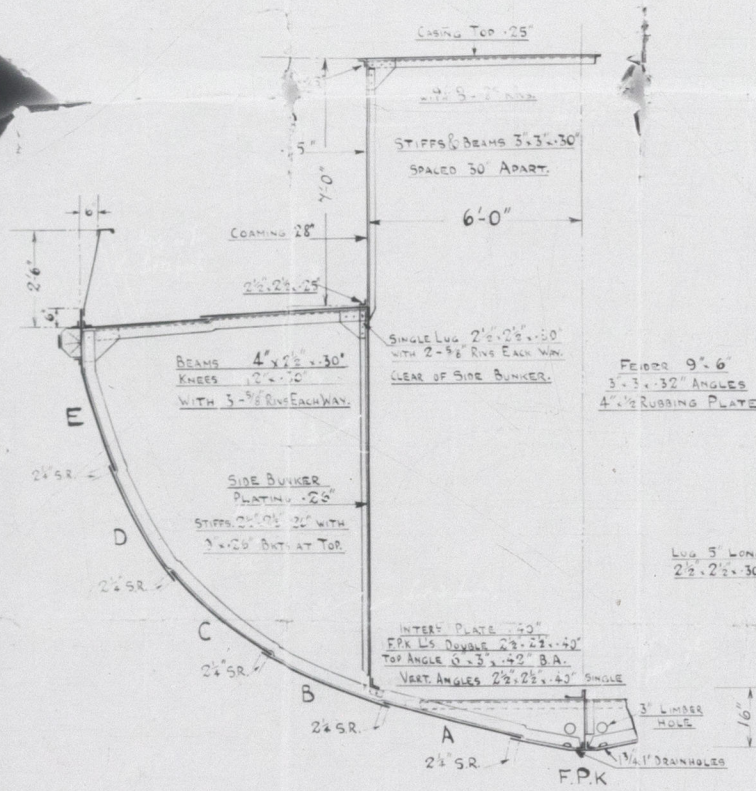
FRAMES 4'-2 1/2" x 3" SPACED 21" APART
BEAM 5'-3 1/2" x 34" ON EVERY FRAMES KNEES 15'-32"
UNDER CRANE SEATING 8'-3 1/2" x 45" CHANNELS
HAW BEAMS IN WAY OF CASING 4'-0" x 31"
FRAMES 10'-28" x 32" IN E.S. 10" IN B.S.
DECK STRAKES 24'-28" x 32" 15" R.R. ALONG TOP OF FLOORS ONLY
DECK STRINGER PLATE 4'-0" x 3/4" x 32"
ANGLE 3'-3 1/2" x 32" x 24"
CENTRE KEELSON INTERCOSTAL PLATE 10" WITH SINGLE 4'-3 1/2" x 32" B.A. 10" R.R.
SID 26" x 25" x 32" B.A.

SHELL PLATING

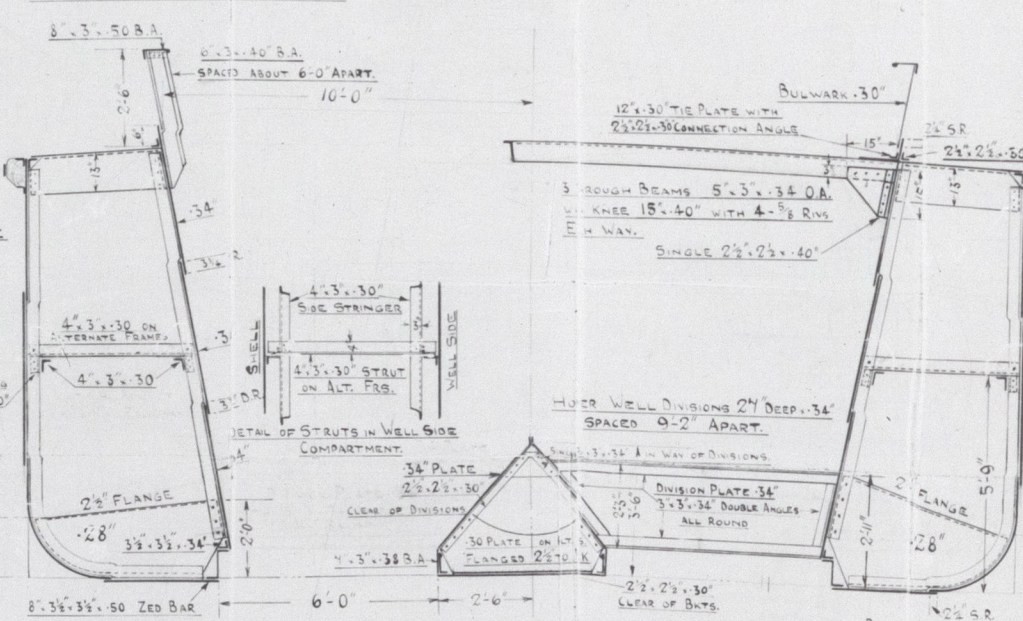
FLAT PLATE KEEL 60' x 14' TO 13'6" AT ENDS
A STRAKE 56' x 30' x 28"
B " 56' x 30' x 28"
C " 56' x 30' x 28"
D " 56' x 30' x 28"
E " 56' x 30' x 28"
BULKHEAD 26' x 25'

SHELL PLATING

FLAT PLATE KEEL 60' x 14' TO 13'6" AT ENDS
A STRAKE 56' x 30' x 28"
B " 56' x 30' x 28"
C " 56' x 30' x 28"
D " 56' x 30' x 28"
E " 56' x 30' x 28"
BULKHEAD 26' x 25'

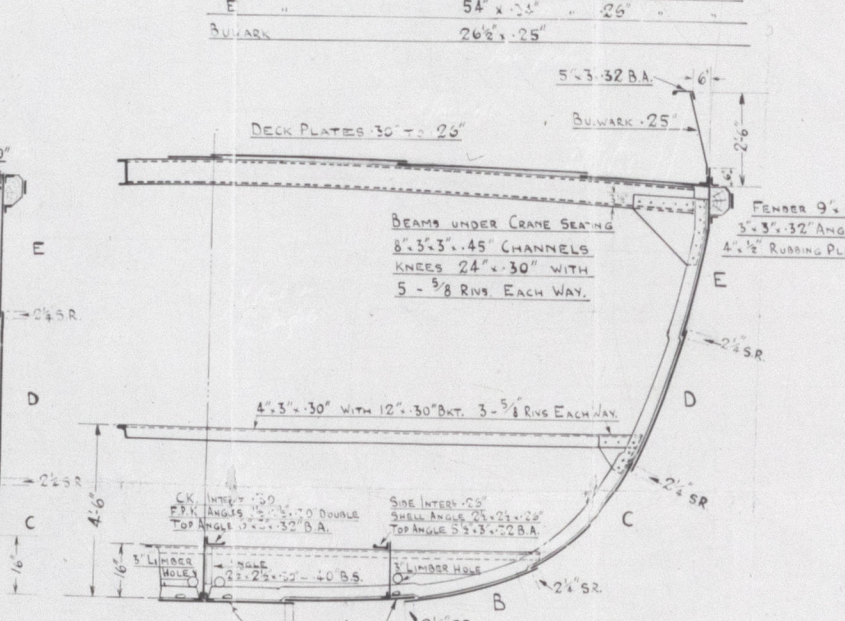


SECTION ABAFT WELL
AT FRAME 15



SECTION AT HOPPER WELL

SCALE 1/2" ON DOT



SECTION FORWARD OF WELL
AT FRAME 54