

Lloyd's Register of Shipping.

SURVEYS FOR FREEBOARD.

(CONDITIONS OF ASSIGNMENT.)

Glasgow Rpt. No. 68862.

Ship's Name "EMPIRE JURA"

Port of Survey Glasgow

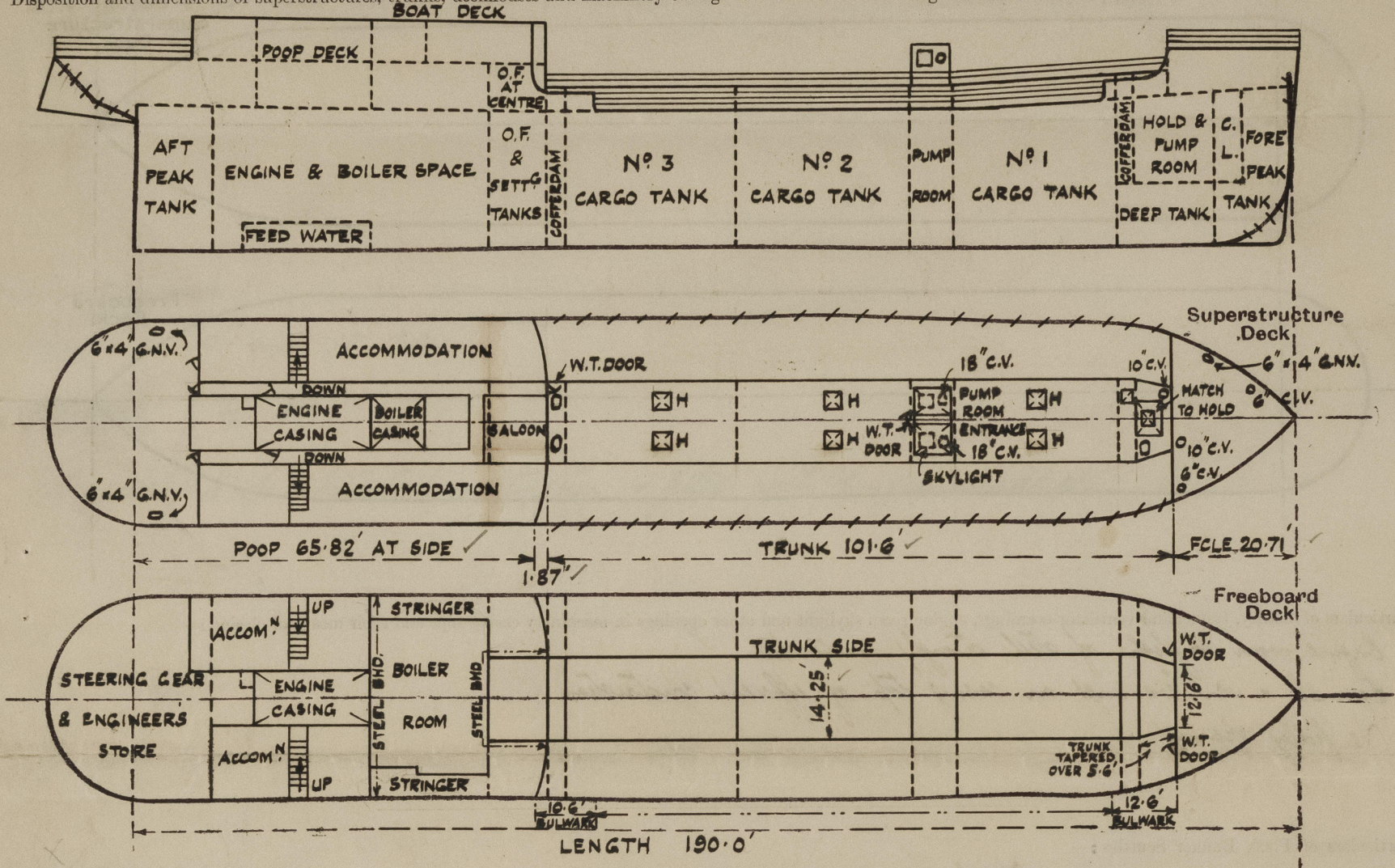
Official Number

Surveyor's Signature J. W. Bolwell.

Nationality and Port of Registry British. Glasgow

Date of Survey Whilst building.

Disposition and dimensions of superstructures, trunks, deckhouses and machinery casings to be inserted in the diagrams and tabular statement:—



Particulars of Superstructures, Trunks, Casings, Deckhouses.

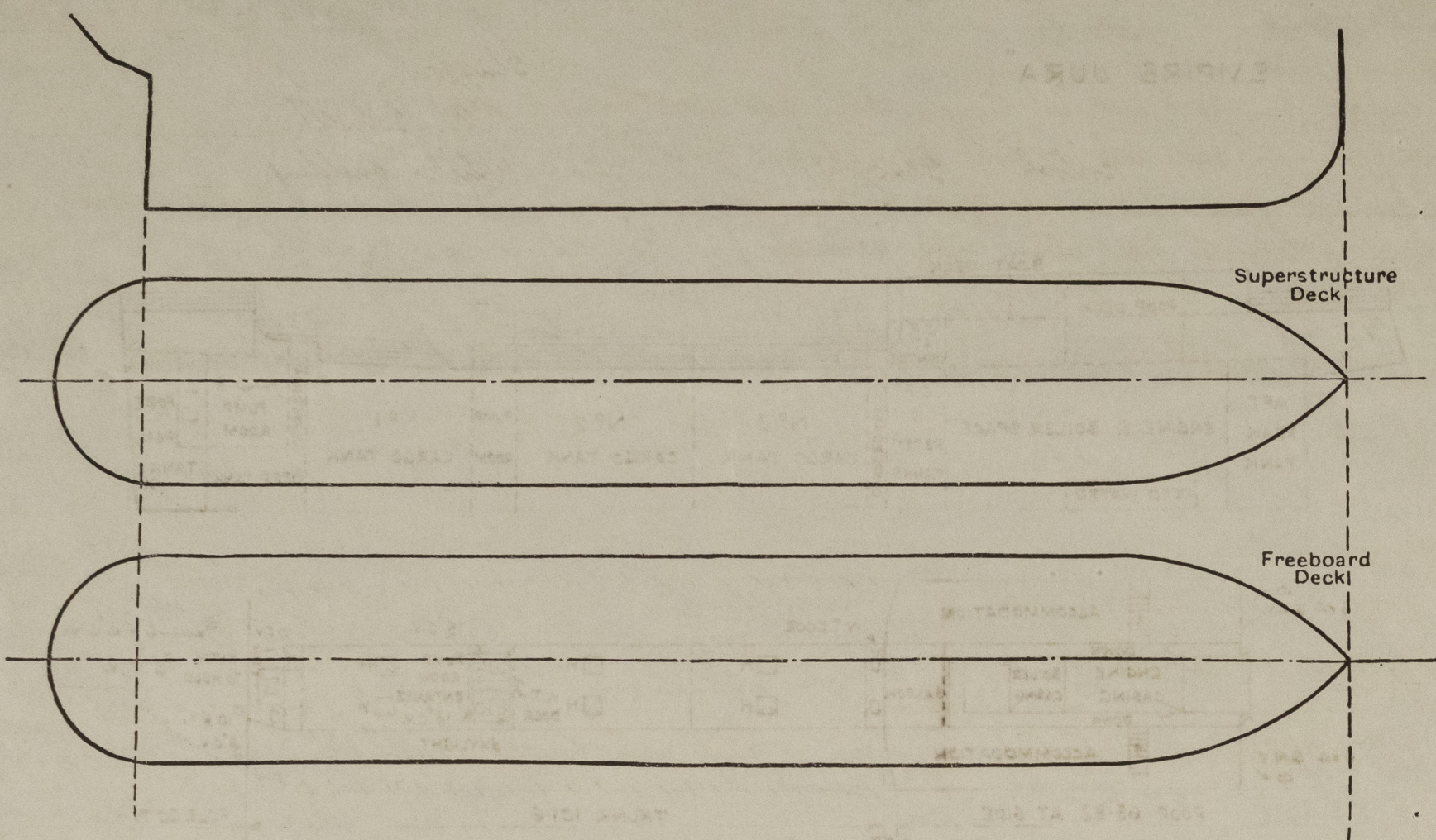
	Coaming	Plating	Stiffeners	Spacing	End Attachments of Stiffeners	Size of Openings	Height of Sills	Height of Casings
Poop Bulkhead <i>at sides of trunk</i>	42 x 35	35	7 x 3 x 36 B.A.	28	Bracketed 7 x 13	1 P 15	12	7'6"
<i>at centre above trunk</i>		35	5 x 3 x 380 A.		Bracketed top, unattached at bottom	1'6" x 1'3"		
Raised Quarter Deck Bulkhead								
Bridge, After Bulkhead								
Bridge, Forward Bulkhead								
Forecastle Bulkhead	✓	30	3 x 3 x 34	25	None	1 P 15	18	7'0" at 13 ft, 6'6" at stem.
Trunk, Aft	35	✓	35 flanged web, 7'6" x 9'4"	25	Web 2R	4'6" x 2'0"	✓	3'6"
Trunk, Forward		35 x 40	11 x 35 fl. d. 7'6" x 9'4"	28	Bracketed	See particulars of hatchway.	✓	
Exposed Machinery Casings on Freeboard or Raised Quarter Decks			7 x 3 x 33 B.A. long					
Exposed Machinery Casings on Superstructure Decks								
Machinery Casings within Superstructures not fitted with Class I Closing Appliances								
Deckhouses on Flush Deck Ships								

Particulars of Closing Appliances (state if capable of being manipulated from both sides).

Poop Bulkhead	Steel plate cover secured by studded bolts spaced about 3" apart.
Raised Quarter Deck Bulkhead	
Bridge, After Bulkhead	
Bridge, Forward Bulkhead	
Forecastle Bulkhead	Steel watertight doors operated from both sides.
Exposed Machinery Casings on Freeboard or Raised Quarter Decks	
Exposed Machinery Casings on Superstructure Decks	
Machinery Casings within Superstructures not fitted with Class I Closing Appliances	
Deckhouses on Flush Deck Ships	

PARTICULARS OF PROTECTION TO OPENINGS, ETC.

The following diagrams should be used to indicate the positions of cargo and coaling hatchways, gangway, cargo and coaling ports, ventilators, companionways, etc., which would affect the seaworthiness of the ship:—



Particulars of fiddle, funnel and ventilator coamings, engine room skylight and other openings in machinery casing tops and their means of closing:—

Engine room skylight of steel strongly constructed ✓
 Funnel & vent coamings on casing top of efficient construction ✓
 No fiddle openings ✓

Particulars of Flush Bunker Scuttles:—

None ✓

Particulars of Companionways:— Accommodation in poop and to engine & boiler space in substantial steel deckhouse on poop deck. Openings in after end of house 4'11" x 2'0"; solid wood door, operated from both sides (2 P. 15.) ✓
 Opening in forward end of house (port side) 4'11" x 2'0"; steel hinged W.T. door operated from both sides. Halls to after openings 18" ✓
 Main pump room entrance on trunk top of steel, strongly constructed. ✓
 Opening in after end 4'6" x 2'0"; sill 18". Steel hinged W.T. door, operated from both sides. ✓

Particulars of Ventilators in exposed positions on freeboard and superstructure decks:—

Side Deck 2 @ 6" C.V. to fore. Coaming 36" x 30" ✓
 1 @ 10" C.V. to fore. Coaming 46" x 32" with supporting brackets. ✓
 1 @ 6" x 4" G.N.V. to fore. 18" high to opening (C.I.) ✓
Trunk Top 1 @ 10" C.V. to fore. Coaming 46" x 32" with supporting bracket to forecabin bulkhead. ✓
 1 @ 6" x 4" G.N.V. to fore. 18" high to opening (C.I.) ✓

Main Pump Room Entrance Top 2 @ 18" C.V. to pump room. Coaming 34" x 40" ✓

Poop Deck 2 @ 6" x 4" G.N.V. to steering gear space. 18" high to opening (C.I.) ✓

All cowls vents to rule requirements & fitted with wood plugs and canvas covers. ✓

Particulars of Air Pipes in exposed positions on freeboard, raised quarter, or superstructure decks:—

Side Deck 1 @ 4" M.I. to fore peak tank 18" high. ✓
Trunk Top 2 @ 4" M.I. to forward deep tank. 18" high. ✓
 2 @ 3" M.I. to after cofferdam. 18" high. ✓
Poop Deck 2 @ 2" M.I. to S.W. tanks in Poop. 22" high. ✓
 2 @ 2 1/2" M.I. to after peak tank. 22" high. ✓
Poop Trunk Bulk. 2 @ 3" M.I. to C.T. Bunkers, 4'3" high above Poop Deck, secured to deckhouse front. ✓
Upper Deck 1 @ 3" M.I. to settling tank, 6'0" high, secured to poop front bulkhead. ✓

All air pipes fitted with gauges. ✓

Particulars of Gangway Cargo and Coaling Ports:—

None. ✓

Particulars of Scuppers and Sanitary Discharge Pipes:—

Scuppers from poop deck led through ship's side above freeboard deck. ✓
 Scuppers from upper deck in poop led to Engine Room bilges. ✓
 Discharges from W.C.'s & wash/plates on poop deck led through ship's side above freeboard deck, and fitted with brass storm valves at outlets. ✓

Particulars of Side Scuttles:—

Poop 9" and 10" dia. ✓

Forecastle 9" dia. ✓

All sidelights of substantial construction & fitted with hinged deadlights. ✓

Vertical distance of Sill of lowest Side Scuttle above top of keel None below freeboard deck. ✓

Particulars of Guard Rails:—

Side Deck - Open rails, 3'6" high with 3 rods & stanchions 4'0" to 5'0" apart. ✓
Trunk Top - " " " " " 2 " " " 4'0" to 4'6" " ✓
Upper Deck - " " " " " 3 " " " 4'0" to 4'6" " ✓
Poop Deck - " " " " " 3 " " " 4'6" " ✓

Particulars of Gangways, Lifelines, etc.:—

None ✓

Particulars of Freeing Arrangements.

	Length of Bulwark	Height of Bulwark	Size of Freeing Ports	Number each side	Area each side	Rule area each side
After Well Bulwark ...	10.6'	3' 4"	mooring pipe 10" x 8" freeing port 24" x 8"	1	.45 0' 1.33 0'	✓
Forward Well Bulwark ...	12.6'	3' 4"	mooring pipe 10" x 8" freeing port 24" x 4"	1	.45 0' .67 0'	✓

State position of each freeing port ... (After ~~Well~~ Bulwark 2'0" from poop front; 1/2" above deck edge.
 (F. and A. position and height above deck edge) Forward ~~Well~~ Bulwark 5'0" from forecastle end; 1/2" above deck edge. ✓

State whether the freeing ports are fitted with shutters, bars, or rails, and give particulars of such:— ✓

Additional area where sheer is less than standard.

PARTICULARS OF PROTECTION TO OPENINGS, ETC.

TRUNK TOP									
HATCHWAYS ON FREEBOARD AND SUPERSTRUCTURE DECKS.									
Description of Hatchway
Dimensions of Hatchway
COAMINGS	Height above Deck
	Thickness
	Sides
	Ends
HATCH BEAMS	Number
	Spacing
	Scantling and Sketch
	Bearing Surface
FORE AND AFTERS	Number
	Spacing
	Unsupported Lengths
	Scantling* and Sketch
HATCH COVERS	Material
	Thickness
	How fitted
	Bearing Surface
Spacing of Cleats
Number of Tarpaulins
<p>*Are wood fore and afters steel shod at all bearing surfaces? ✓</p> <p>Are battens and wedges efficient and in good condition? ✓</p> <p>Are tarpaulins in good condition and in accordance with rule requirements? ✓</p> <p>Are lashings provided in accordance with rule requirements? ✓</p>									

Particulars of any special features :—

Endorsement at first survey and at surveys for renewal of Certificate :—

The fittings and appliances are in accordance with the particulars shown on this form (or as now modified) and are in good condition.



© 2021

Lloyd's Register Foundation