

124 MAR 1958

Index No. _____
(For London Office use)

LLOYD'S REGISTER OF SHIPPING

ALTERATIONS TO CONDITIONS OF ASSIGNMENT OF LOADLINES

Ship's Name "CINDERELLA".

Official No. -1222

Port of Registry Monrovia.

This ship has been under survey at Antwerp.

on February, 1958 and the following alterations to the conditions of assignment of loadlines have now been effected/found:—

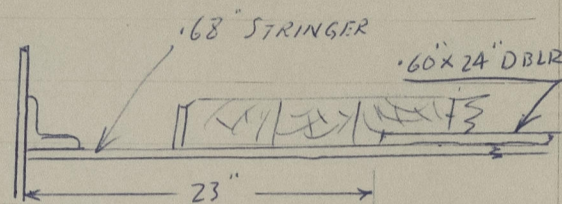
DECK DOUBLER.

A doubling plate has been fitted on the freeboard deck p&s.

24" wide by .60" thick from fr. 61. to fr. 86.,

24" x .50" from fr. 46 to fr. 61 and fr. 86 to fr. 130,

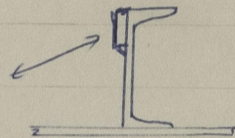
Doubler riveted to deck and butts welded. ✓



Freeboard deck amidships.

SIDE FRAMES.

Side frames 74, 77, 81 and 83 p&s. in Engine Room reinforced with 4 x .50 flats.



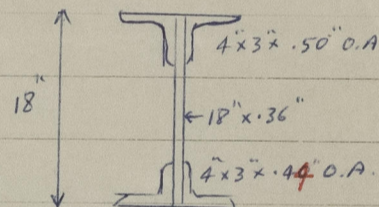
Side frames in tween deck fitted with 3 1/2" x 3 1/2" x .50" reverse bars, forming a 6" deep section, at frames 145 to 166, and at alternate frames from frame 140 to frame 9. Reverse bars efficiently connected at ends. ✓

HATCH WEBS.

N°. 2, 3, 4 & 5 freeboard deck hatch beams modified, with

18" x .36" web, 4" x 3" x .44" bottom angles and

4 x 3 x .50 top angles, as shown on sketch. ✓

TONNAGE HATCH.

Coaming removed and opening blanked off with .40 plating, 7" x 3 1/2" x .35" B.A. beams and centreline girder 9" x .40 with 3" flange. ✓

Doors: All exposed machinery casings and midship deckhouse doors fitted with 24" coaming. ✓

LIFELINES.

Supplied for fitting from forecastle to bridge and bridge to aft deckhouse with p&s. ✓

R. Parker

Antwerp

February 1958

R. PARKER.

ANTWERP

February, 1958.

From Rotterdam Rpt 45540 of 14.6.58
Hatches 2, 3, 4 and 5 provided with 7 steel protected
cables with stretcher.

ad-
27-6-58

A copy of this Report has been placed on board.

5m, 0, 50. T.



© 2021

Lloyd's Register
Foundation

011433-011440-0037