

SCALE: $\frac{1}{8}$, $\frac{1}{4}$ " ~ 1'-0".

LENGTH BETWEEN P.P. 215'-0"

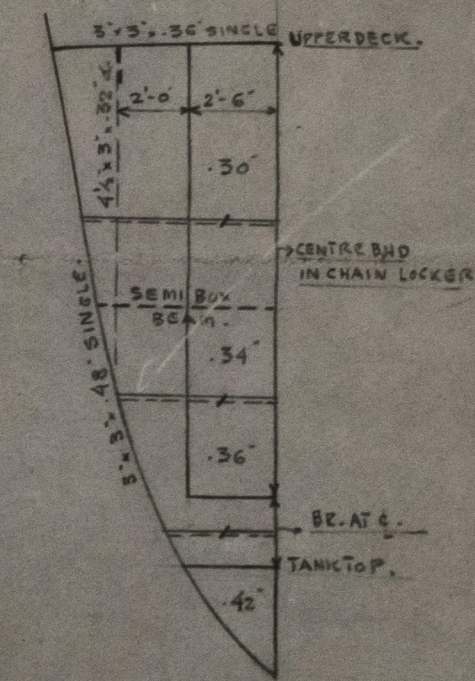
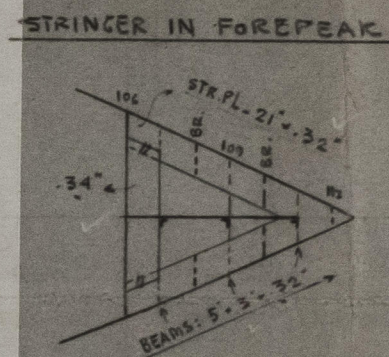
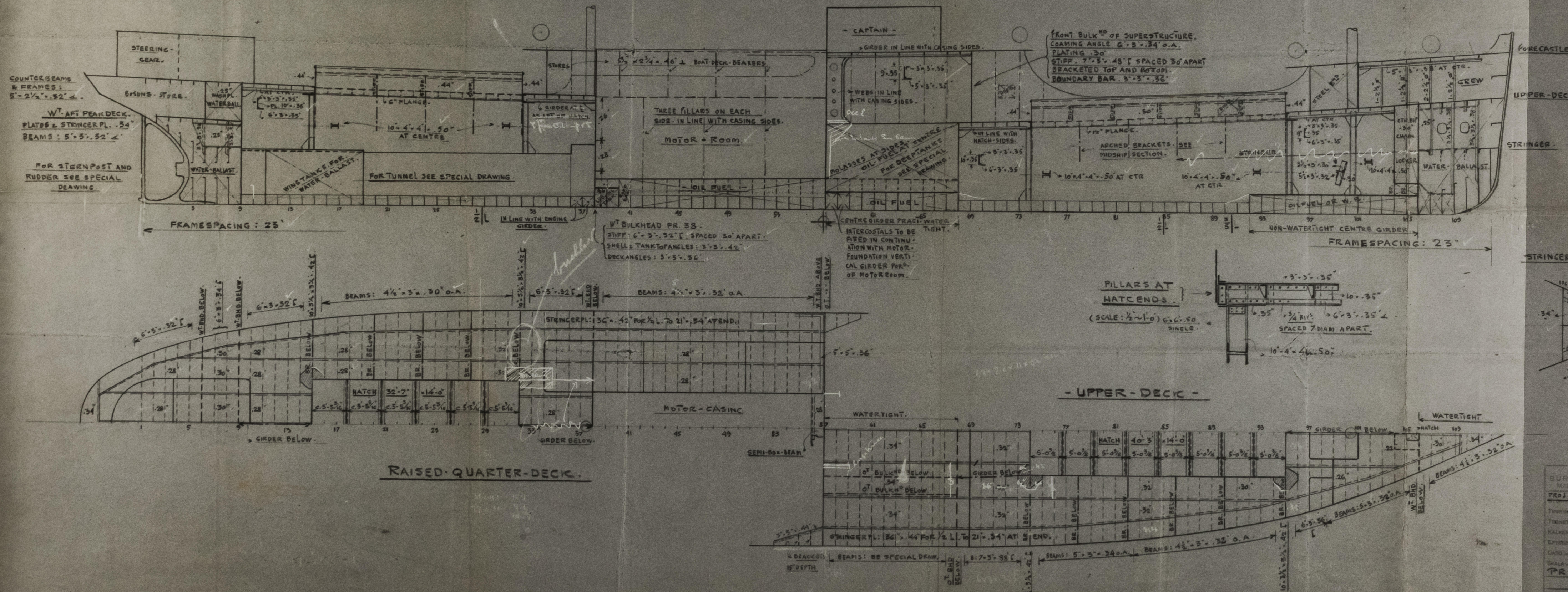
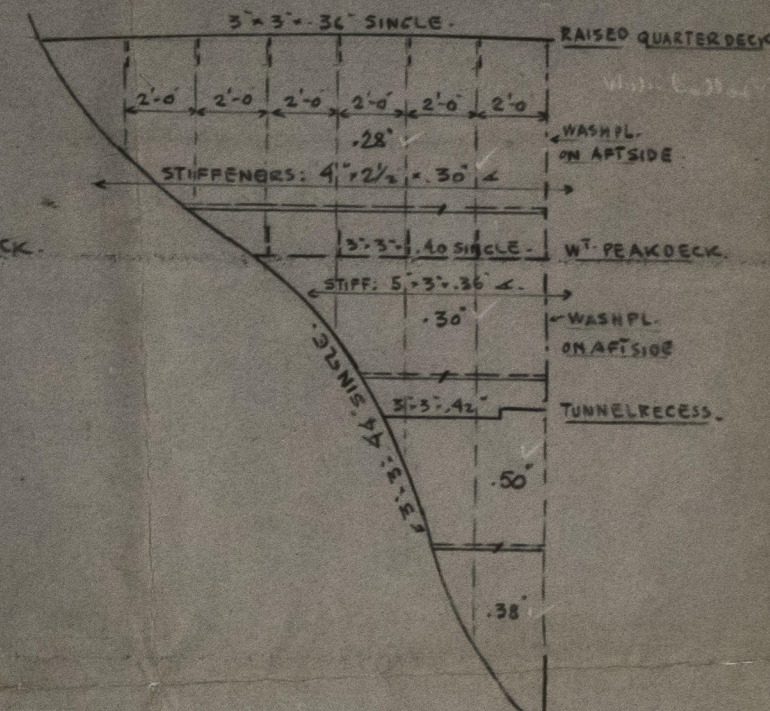
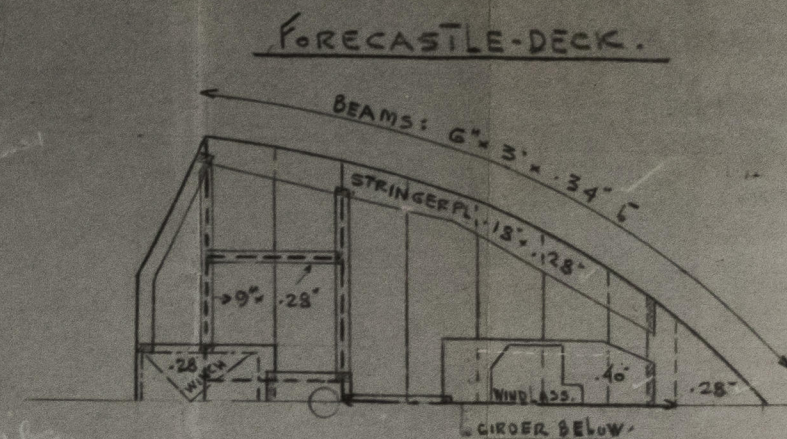
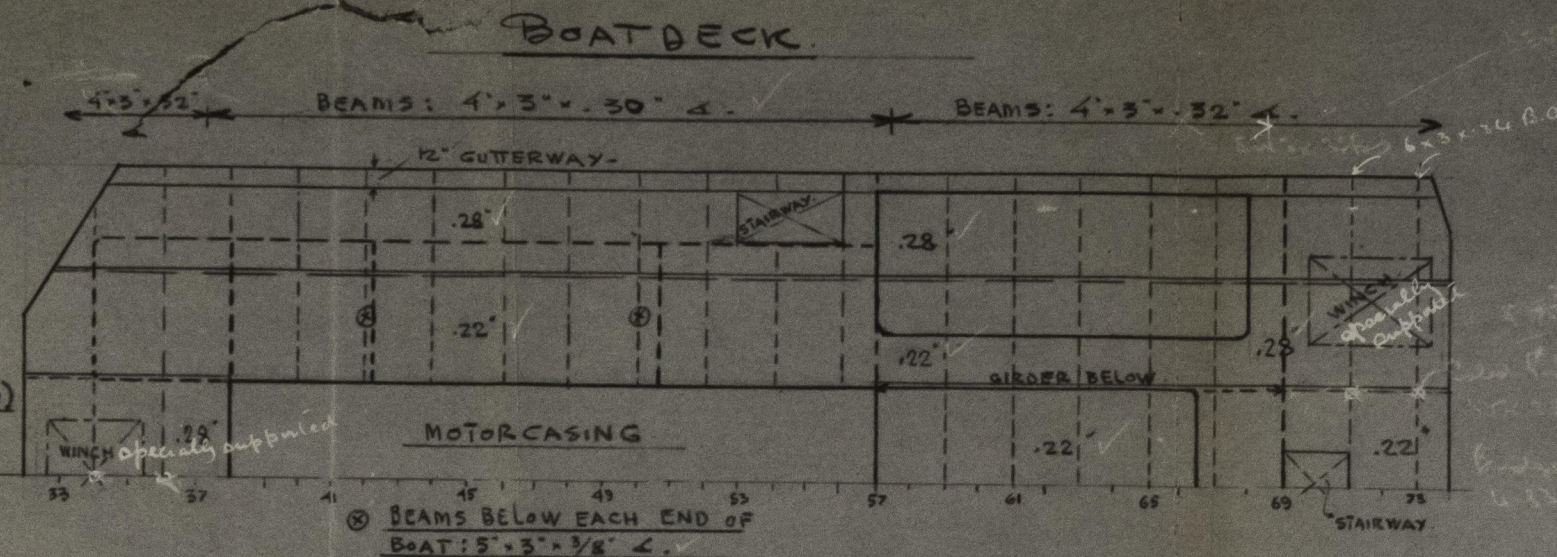
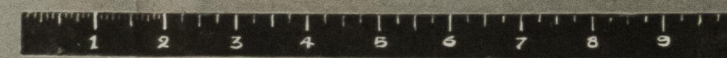
BREADTH MOULDED 36'-6"

DEPTH TO UPPERDECK. 13'-0"

HEIGHT OF RAISED QUARTERDECK. - 4'-0"

TO BE BUILT TO THE BRITISH CORPORATION" BS * (WITH FREE DRAWING)

DOUBLE BOTTOM TO CARRY OIL FUEL OF A FLASH POINT ABOVE 150° FAHR.



AKTIVITETSMÅGÅT
BURMEISTER & WAIN
MACKIN & SHIDDERGGERI

Proj. 2033.
Nr. 13926
Tegning Nr. 95.
Tegnet af
Kalkuleret af
Efterbetet af
Dato 9/2-34.
Skala 1/8" = 1'-0"
Profile.

WT. BULKHEAD ON FR. 106

THIS DRAWING IS STRICTLY CONFIDENTIAL
AND MUST ON NO ACCOUNT BE COPIED OR
DISCLOSED FOR ANY THIRD PERSON.

R. P. Mulvey

011427-011432-0195

Profile of Decks.

"WYRALLAH" *

See Brisbane letter
dated 27.4.59

© 2021

Lloyd's Register
Foundation

011427-011432-0195