

Rpt. C.11.

12 MAY 1956

LLOYD'S REGISTER OF SHIPPING

Index No. 46324
(For London Office only.)

UNITED WITH THE BRITISH CORPORATION REGISTER

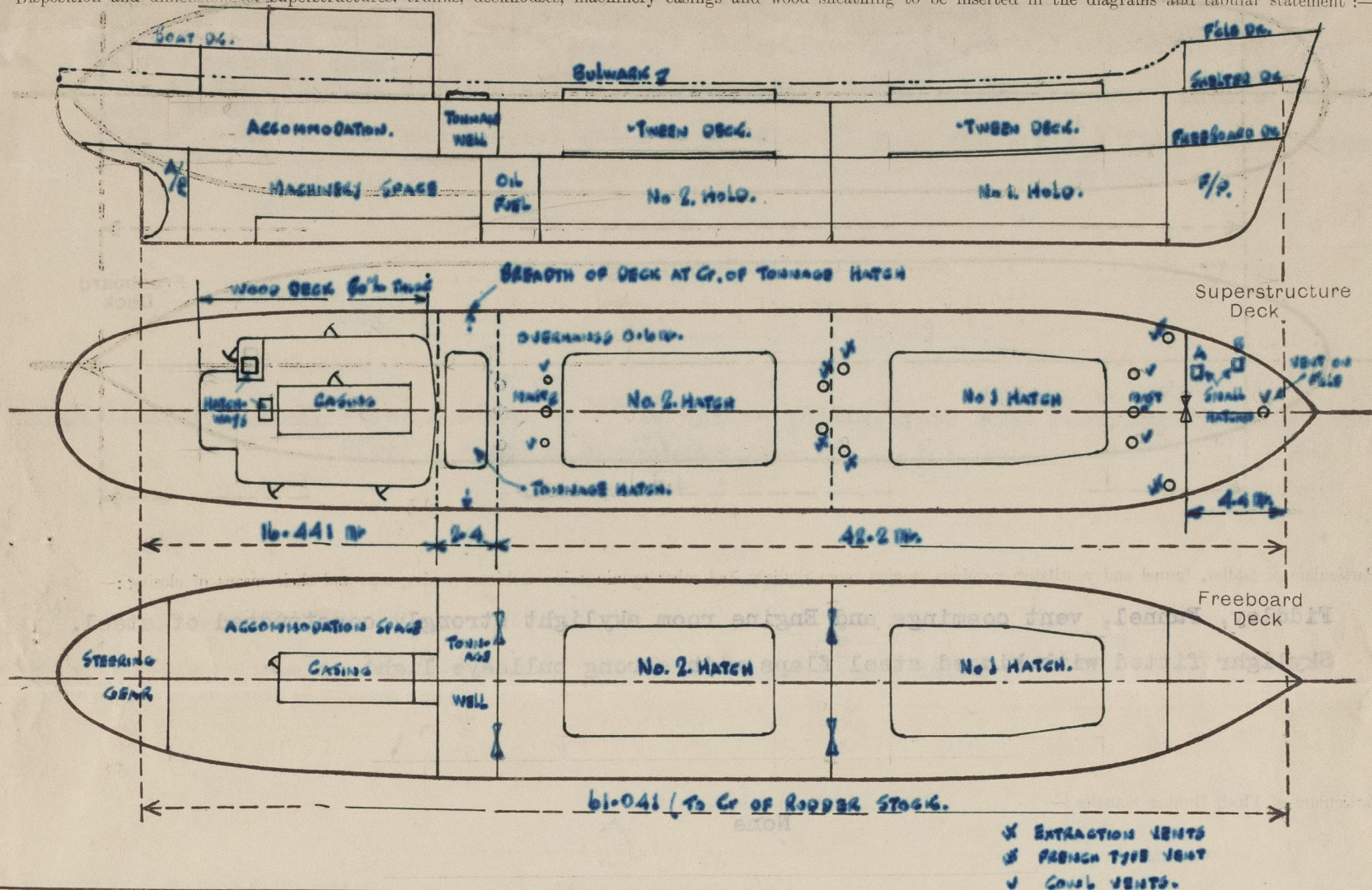
SURVEYS FOR FREEBOARD.

(CONDITIONS OF ASSIGNMENT.)

Rpt 11935

Ship's Name "SAN FLORO" Port of Survey Bilbao
Official Number - Surveyor's Signature M. S. Dupie.
Nationality and Port of Registry Spanish. Santander Date of Survey During construction

Disposition and dimensions of superstructures, trunks, deckhouses, machinery casings and wood sheathing to be inserted in the diagrams and tabular statement:—



Particulars of Superstructures, Trunks, Casings, Deckhouses.

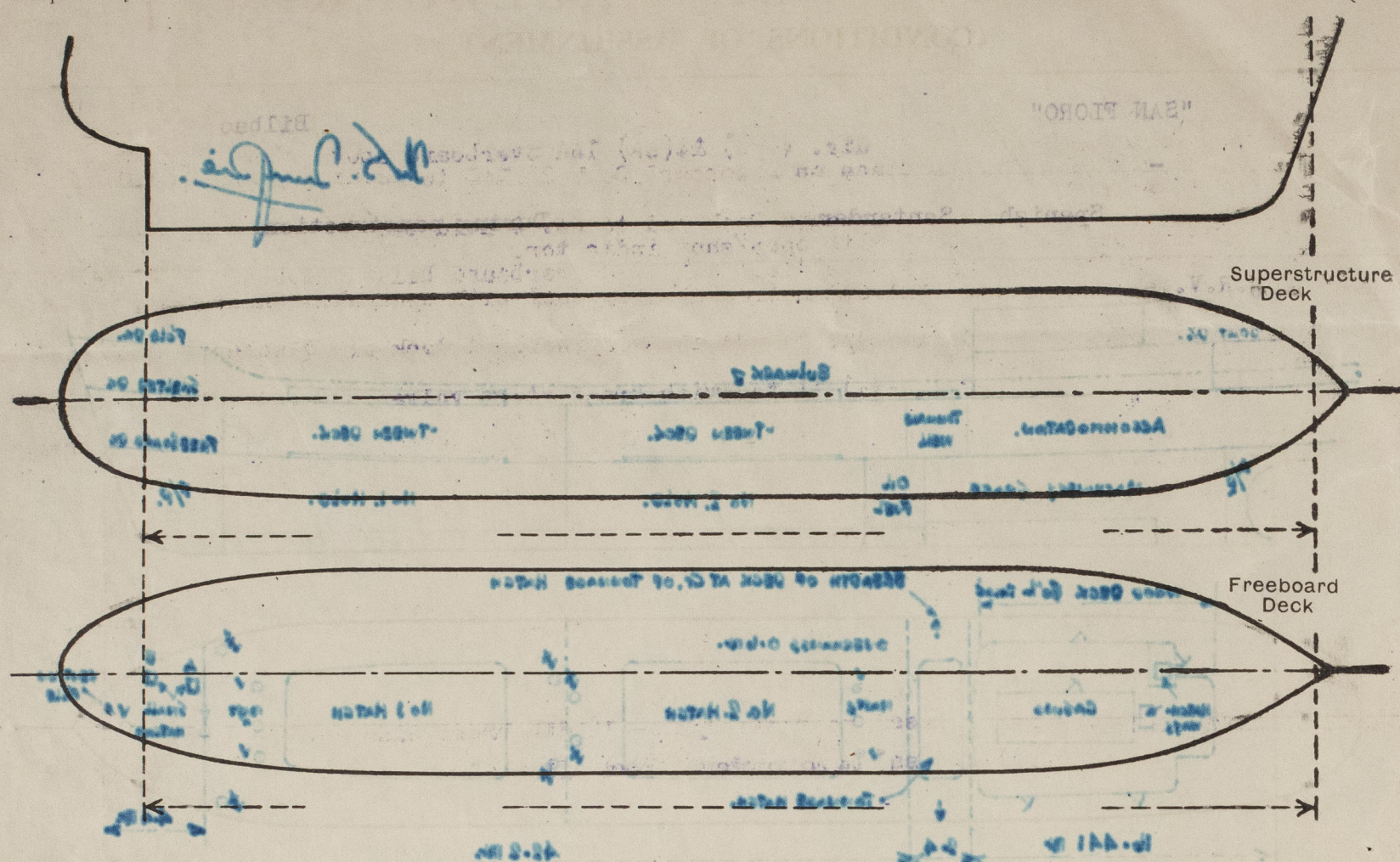
	Coaming	Plating	Stiffeners	Spacing	End Attachments of Stiffeners	Size of Openings	Height of Sills	Height, Beam to Beam Mt.
Poop Bulkhead ...	7.5	6.5	65x65x7 Toe welded	633 to 575 mm.	Welded	None	-	2.25
Raised Quarter Deck Bulkhead ...								
Bridge, After Bulkhead ...	7.5	6.5	65x65x7 Toe welded	750 to 633 mm.	Welded	2 at 1220x910 mm.	600 mm.	2.25
Bridge, Forward Bulkhead ...								
Superimposed Forecastle Bulkhead ...	5.5	5.5	90x60x7 toe welded & 120x80x10 "	760 mm.	Welded	1890x1240 mm.	400 mm.	2.1
Trunk, Aft ...								
Trunk, Forward ...								
Exposed Machinery Casings on Freeboard or Raised Quarter Decks ...								
Exposed Machinery Casings on Superstructure Decks (Boat Dk.) ...	5.5	5.5	70x50x7 toe welded	600 mm.	Bkts top	1450x550 mm.	310 mm.	2.1
Machinery Casings within Superstructures not fitted with Class I Closing Appliances ...	500x10 mm.	5	70x50x7 toe welded	600 mm.	-	1600x570 mm.	210 mm.	2.1
Deckhouses and Pump Room Entrances on Shelter Dk Aft.	5.5	5.5	75x50x7 toe welded	600 mm.	Bkts top & bottom	4 at 1460x640	457 mm.	2.1

Particulars of Closing Appliances (state if capable of being manipulated from both sides).

Poop Bulkhead ...	No openings
Raised Quarter Deck Bulkhead ...	-
Bridge, After Bulkhead ...	3" stormboards in full height welded channels
Bridge, Forward Bulkhead ...	-
Superimposed Forecastle Bulkhead ...	3" stormboards in full height welded channels
Exposed Machinery Casings on Freeboard or Raised Quarter Decks ...	-
Exposed Machinery Casings on Superstructure Decks (Boat Dk.) ...	Hinged steel door operated both sides.
Machinery Casings within Superstructures not fitted with Class I Closing Appliances ...	Hinged steel doors operated both sides.
Deckhouses and Pump Room Entrances on Shelter Dk Aft.	3 Hardwood doors operated both sides. 1 steel weathertight door operated both sides.

PARTICULARS OF PROTECTION TO OPENINGS, ETC.

The following diagrams should be used to indicate the positions of cargo and coaling hatchways, gangway, cargo and coaling ports, side scuttles, scuppers, ventilators, companionways, etc., which would affect the seaworthiness of the ship :-



Particulars of fiddle, funnel and ventilator coamings, engine room skylight and other openings in machinery casing tops and their means of closing :-

Fiddle, Funnel, vent coamings and Engine room skylight strongly constructed of steel.
Skylight fitted with hinged steel flaps with strong bulls-eye light.

Particulars of Flush Bunker Scuttles :-

None

Particulars of Companionways :-

(including those incorporated in deckhouses and masthouses)

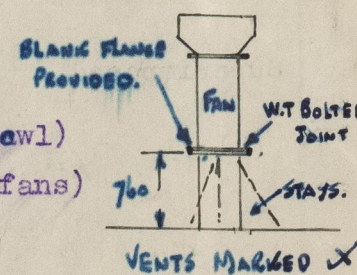
Companionway enclosed in strong steel deckhouse on Shelter Deck, weather tight steel door operated both sides 1460 x 640 sill 456 mm.

Particulars of Ventilators in exposed positions on freeboard and superstructure decks :-

Forecastle Deck. 1 at 250 mm. dia. Coaming 8 x 915 mm. high (cawl)
Freeboard Deck. 4 at 560 mm. dia. Coaming 10x2690 mm. high stayed to masts (cawl)
SHELTER 4 at 560 mm. dia. Coaming 10x760 mm. high stayed (Extraction fans)
2 at 200x100mm. Coaming 8 x 915 mm. high - French type.

Cawl vents supplied with wood plugs & covers.

French type with canvas covers.



THE BLANK FLANGES ARE STOWED ADJACENT TO THE VENTILATORS

Particulars of Air Pipes in exposed positions on freeboard, raised quarter, or superstructure decks :-

F'cle Deck. 1 at 3 dia. x 500 mm. high
Shelter Deck. 13 at 3 dia. x 500 mm. high
4 at 2 dia. x 500 mm. high
3 at 4 dia. x 500 mm. high
1 at 2 dia. x 500 mm. high

Air pipes to oil tanks fitted with wire gauze and canvas covers.
Remainder with wood plugs.



Particulars of Gangway Cargo and Coaling Ports :-

San Floro.
12 MAY 1956

Particulars of Scuppers and Sanitary Discharge Pipes :-

Scuppers from Shelter Deck 2" dia. 4 (ps) & 4 (ss) led overboard above freeboard deck open ends.
Scupper from steering gear space on Freeboard Deck 2" led to Machinery Space with self closing cock at lower end.
Scuppers 1 at 2" (p&s) from Freeboard Deck led to No. 2 hold bilges with S.D. valve at deck controlled from Shelter Deck with open/shut indicator.
Scuppers from Tonnage well 1 at 5" dia. (p&s) led overboard below freeboard deck with brass S.D.N.R.V. at ships side controlled from shelter deck with open/shut indicator.

Discharges from accommodation spaces aft above Freeboard deck all discharge overboard below freeboard deck.
2 at 4" dia. (1 p.s. and 1 s.s.) fitted with brass storm valves and brass sluice valves with local control.
2 at 4" dia. (1 p.s. and 1 s.s.) and 2 at 2" dia. (1 p.s. and 1 s.s.) fitted with brass storm valves. & HAVE SCREW DOWN VALVES FITTED IN AN ACCESSIBLE POSITION.

Particulars of Side Scuttles & Deadlights :-

Above Freeboard Deck. 2 (ps) & 2 (ss) to F'cle Space- 12" dia. brass side scuttles with cast steel deadlights
8 (ps) & 8 (ss) to Accommodation Space Aft. - " " " "

Vertical distance of Sill of lowest Side Scuttle above top of keel. None below freeboard deck.
Distance from amidships to centre of lowest Side Scuttle.

Particulars of Guard Rails & Bulwarks :-

F'cle Deck. 3 guardrails with stanchions 910 mm. high and 1450 mm. apart.

Shelter Deck. Bulwark 1000 mm. high x 7 mm. with 150x75x8 rail bar and 8 mm. flanged plate, stays spaced 1800 mm. apart.

Particulars of Gangways, Lifelines, etc. :-

None

Particulars of Freeing Arrangements.

	Length of Bulwark	Height of Bulwark	Size of Freeing Ports	Number each side	Area each side	Rule area each side
After Well ...	From F'cle Bld. to after end	1000 mm.	1480 x 150 mm.	15	3.26 m ²	1.724 m ²
Forward Well ...						

State position of each freeing port ... { After Well :- Forward end of Fwd. Port on frame 76
(F. and A. position and height above deck edge) { Forward Well :- Aft. end of After Port on frame 31.

State whether the freeing ports are fitted with shutters, bars, or rails, and give particulars of such :-

Additional area where sheer is less than standard.

PARTICULARS OF PROTECTION TO OPENINGS, ETC.

		HATCHWAYS ON FREEBOARD AND SUPERSTRUCTURE DECKS.				
		Freeboard Deck		Shelter Deck		Tonnage Hatch
Description of Hatchway		No.1	No.2	No.1	No.2	
Dimensions of Hatchway		11.4x5 m.	11.4x6 m.	11.4x5 m.	11.4x6 m.	12x6 m.
COAMINGS	Height above Deck	250 mm.	250 mm.	610 mm.	610 mm.	300 mm.
	Thickness	10	10	10	10	11
	Stiffeners	7x35 half round	BA150x75x85	70x35 half round		
	Brackets, Stays	-	-	4S IE	4S IE	IE
HATCH BEAMS	Number	1,725	1,425	1,425	1,425	-
	Spacing	250 mm.	250 mm.	250 mm.	250 mm.	-
	Scantling and Sketch					
	Bearing Surface	90 mm.	90 mm.	90 mm.	90 mm.	-
FORE AND AFTERS	Number					
	Spacing					
	Unsupported Lengths					
	Scantling* and Sketch	None				
HATCH COVERS	Material	Wood	Wood	Wood	Wood	Wood
	Thickness	65	65	65	65	65
	How fitted	F & A	F & A	F & A	F & A	F & A
	Bearing Surface	75	75	75	75	75
Spacing of Cleats		600 mm.	600 mm.	600 mm.	600 mm.	lashings
Number of Tarpaulins		1	1	2	2	fitted
<p>*Are wood fore and afters steel shod at all bearing surfaces? -</p> <p>Are battens and wedges efficient and in good condition? Yes</p> <p>Are tarpaulins in good condition and in accordance with rule requirements? Yes</p> <p>Are lashings provided in accordance with rule requirements? -</p> <p>Are wood covers fitted with galvanised end bands? Yes locking bars on shelter deck.</p>						

Particulars of any special features :— (Timber Deck-cargo Fittings, Skylights, Sewage Systems, Ash Ejectors, Rubbish Shoots, etc.)

SHELTER

Small hatches on Freeboard Deck in Superimposed Forecastle.

- A) To Store Room - 600 x 430 mm. 10 mm. coaming 150 mm. high with W.T. steel hinged cover.
- B) " " " 440 x 440 mm. 10 mm. " 150 mm. " " " " " "



© 2021

Lloyd's Register Foundation