

SINGLE SCREW TUGS

AFT END BULKHEADS

RESCUE TYPE

~~NOS 242-3~~ NOS 185-6-4

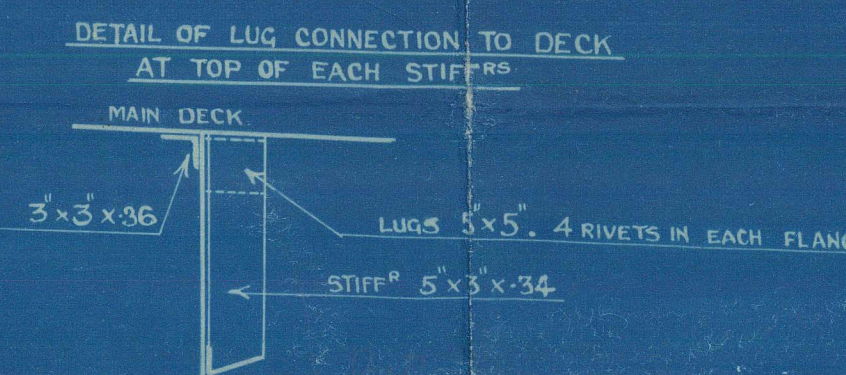
SCALE 1/2" = 1 FOOT

ANGLES OF BULKHEAD NO. 6

MARK	NO.	LENGTH	WIDTH	THICKNESS	WHERE USED
BH 6	1	25'-0"	8'-0"	3/4"	FRAMES
2	2	25'-0"	8'-0"	3/4"	FRAMES
3	3	25'-0"	8'-0"	3/4"	FRAMES
4	4	25'-0"	8'-0"	3/4"	FRAMES
5	5	25'-0"	8'-0"	3/4"	FRAMES
6	6	25'-0"	8'-0"	3/4"	FRAMES

PLATES OF BULKHEAD NO. 6

MARK	NO.	LENGTH	WIDTH	THICKNESS	REMARKS
BH 6	1	25'-0"	8'-0"	3/4"	TAPER BOTH SIDES
2	2	25'-0"	8'-0"	3/4"	ONE SIDE
3	3	25'-0"	8'-0"	3/4"	ONE SIDE
4	4	25'-0"	8'-0"	3/4"	ONE SIDE
5	5	25'-0"	8'-0"	3/4"	ONE SIDE
6	6	25'-0"	8'-0"	3/4"	ONE SIDE

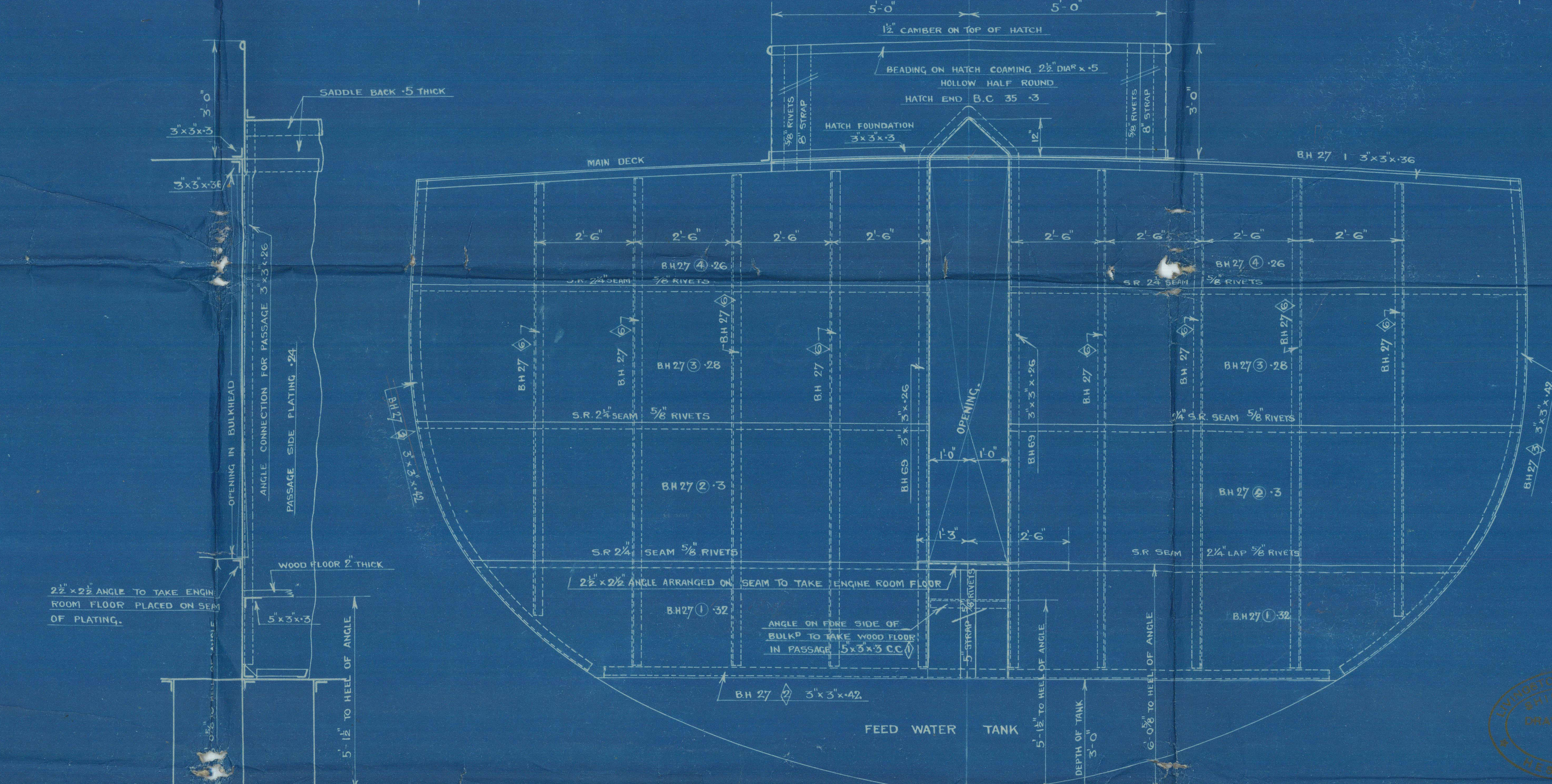
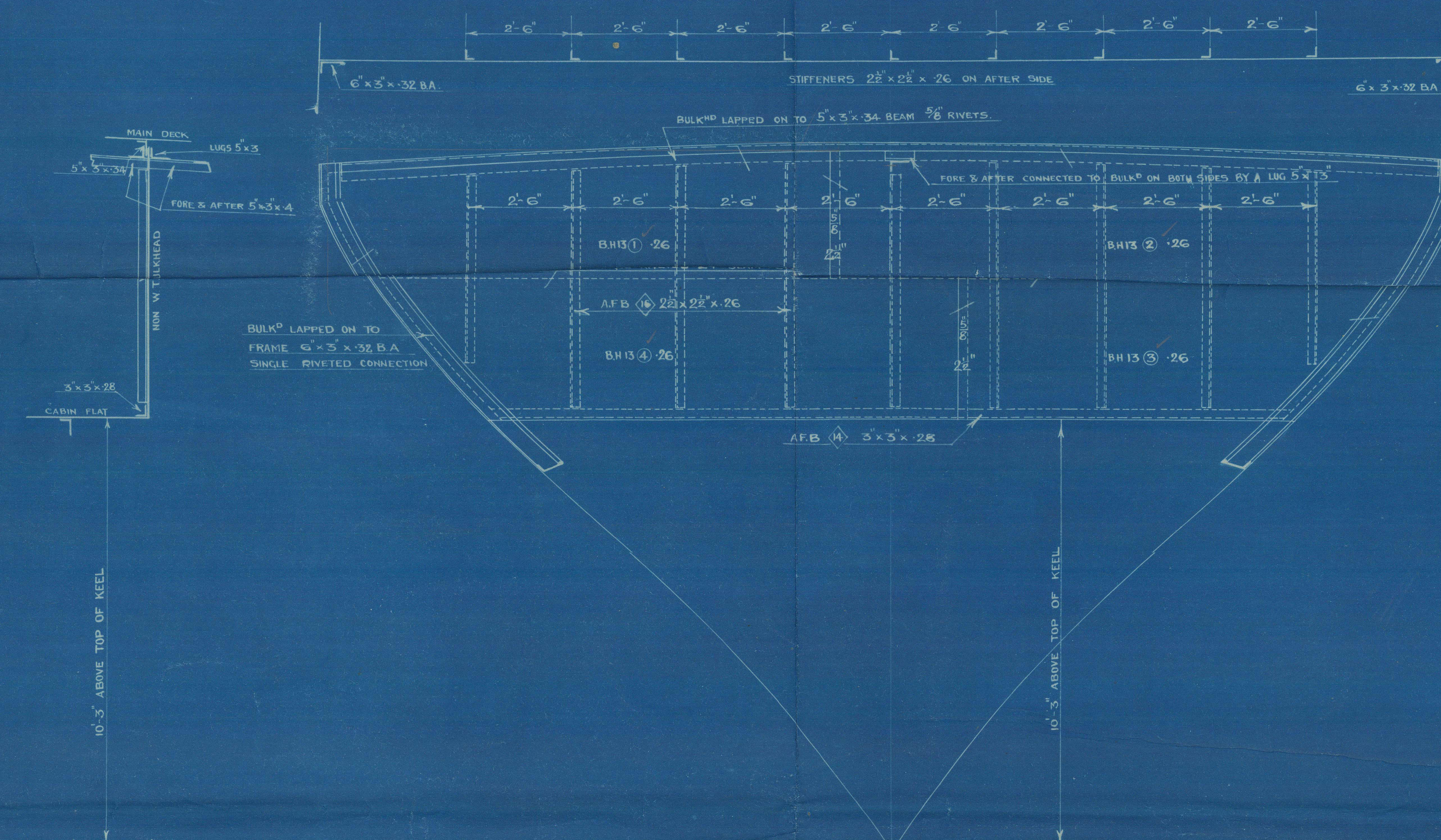
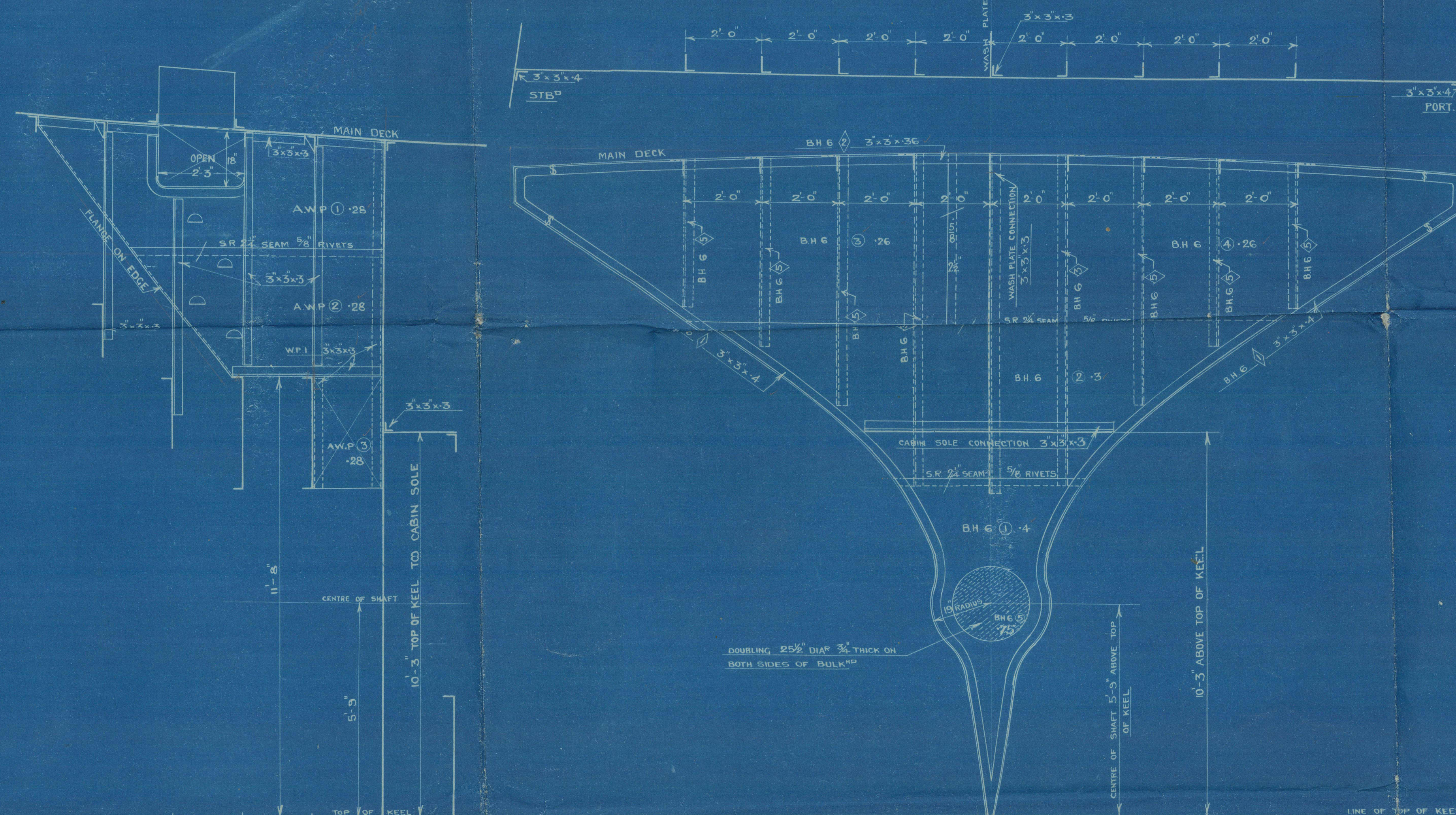


LIST OF MATERIAL

MARK	NO.	LENGTH	WIDTH	THICKNESS	WHERE USED
BH 13	1	15'-0"	4'-0"	3/4"	FRAMES
2	2	15'-0"	4'-0"	3/4"	FRAMES
3	3	15'-0"	4'-0"	3/4"	FRAMES
4	4	15'-0"	4'-0"	3/4"	FRAMES
5	5	15'-0"	4'-0"	3/4"	FRAMES
6	6	15'-0"	4'-0"	3/4"	FRAMES

LIST OF MATERIALS

MARK	NO.	LENGTH	WIDTH	THICKNESS	WHERE USED
BH 27	1	12'-0"	3'-0"	3/4"	FRAMES
2	2	12'-0"	3'-0"	3/4"	FRAMES
3	3	12'-0"	3'-0"	3/4"	FRAMES
4	4	12'-0"	3'-0"	3/4"	FRAMES
5	5	12'-0"	3'-0"	3/4"	FRAMES
6	6	12'-0"	3'-0"	3/4"	FRAMES



AFT PEAK W.T. BHD. ON FR. 6.
LOOKING AFT.
STIFFERS ON AFTER SIDE 5' x 3/4" x 3/4" ANGLES.

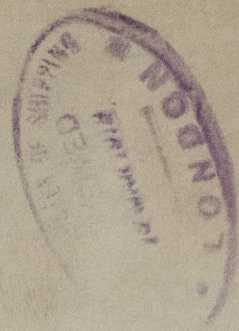
NON W.T. BHD. ON FR. 13.
LOOKING AFT.
STIFFERS 25' x 25' x 3/4" ANGLES.

NON W.T. BUNKER BHD. ON FR. 27.
LOOKING FORWARD.
STIFFERS 6' x 3' x 3/4" BUILT ANGLES.

DETAIL OF BULK SHEERING POSITION
OF ANGLE TO TAKE ENGINE FLOOR
2 1/2" x 2 1/2" ANGLE ARRANGED
ON SEAM.

RIVETING.
RIVETING OF ALL SEAMS AND BUTTS 3/4" RIVETS SPACED 2 1/2" APART CM TO CM.
RIVETS CONNECTING STIFFERS TO PLATING OF AFTER PEAK BULK ON FRAME 6, 3/4" DIA SPACED 3 1/2" APART CM TO CM.
ON STIFFERS HAVING LUGGED ATTACHMENTS OR NO END ATTACHMENTS THE SPACING OF RIVETS TO PLATING IS TO BE 2 1/2" FROM 3/4" RIVETS FOR 15% OF THE LENGTH OF THE STIFFENER FROM EACH END.
BULK FRAMES TO SHELL PLATING 3/4" RIVETS SPACED 3 1/2" APART CM TO CM.
RIVETS IN FRAME IS CONNECTING BULK PLATING TO ORDINARY FRAME ARE SAME DIA & SPACING AS IN THE CASE OF BULK FRAMES TO PLATING WIZ 3/4" RIVETS SPACED 2 1/2" APART.

FERGUSON BROS.
(PORT GLASGOW) LTD
SHIPBUILDERS & ENGINEERS



Messrs. Livingston & Co. Ltd.
Aberdeen. Shull.

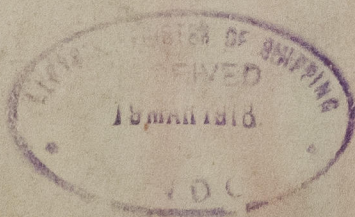
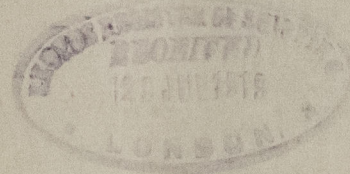
Yrs 185: 6 97. 8. 9 + 190
(Kew's type type)

BULKHEADS.

AFTER END

St Batalph. Hull Report No 30999.

St lears - - - - - 31242
"Blauke" see "St Mary" Hld. report. 31601
" " " " 1st Entry 31425.



© 2021
Lloyd's Register
Foundation

011408-011414-0002