

IN T.R. BUTT STRAP ALTERNATE RIVETS OMITTED IN BACK ROW.
6 RIVETS IN EDGES OF PLATING BETWEEN FRAMES AMIDSHIPS EX-
CLUDING RIVETS IN FRAMES.

RIVETING		
ITEM.	DIA. OF RIVETS	SPACING OF RIVETS
BUTTS.	$\frac{3}{4}$ "	$2\frac{5}{8}$ "
SEAMS	$\frac{3}{4}$ "	3"
BULWARK & F'CLE SIDE PLATING	$\frac{3}{4}$ "	$2\frac{5}{8}$ "
SHELL LUGS & CONNECTIONS	$\frac{3}{4}$ "	4 RIVETS IN EACH PLATE SET FRAMES

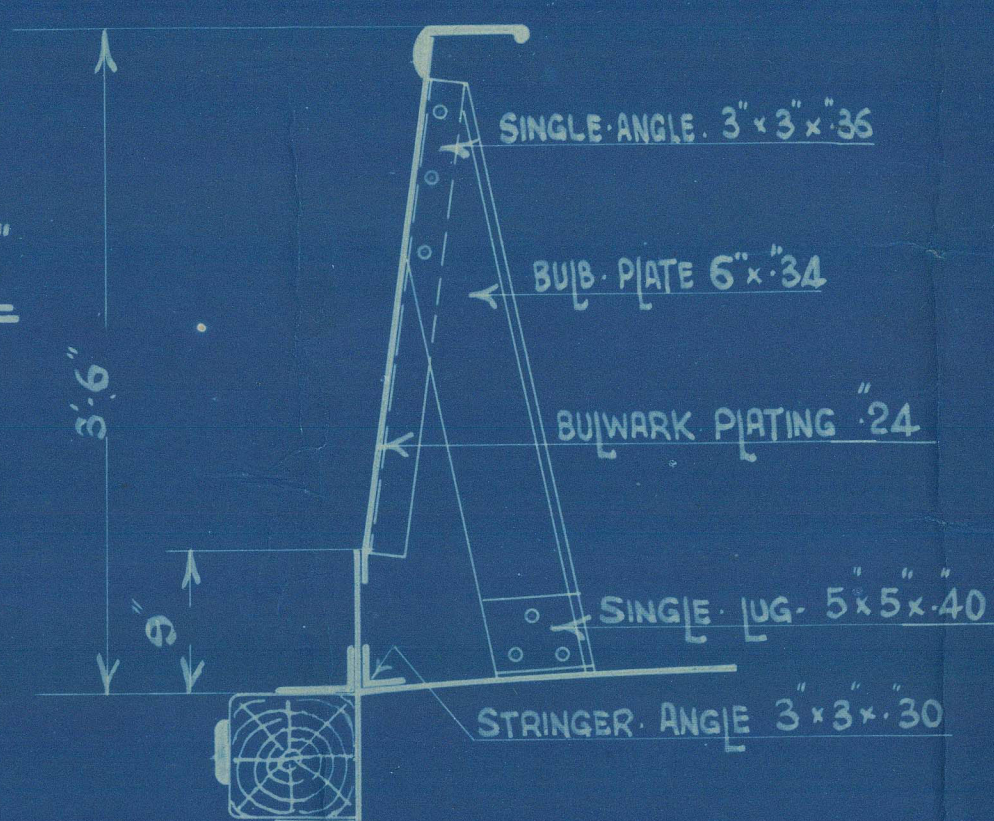
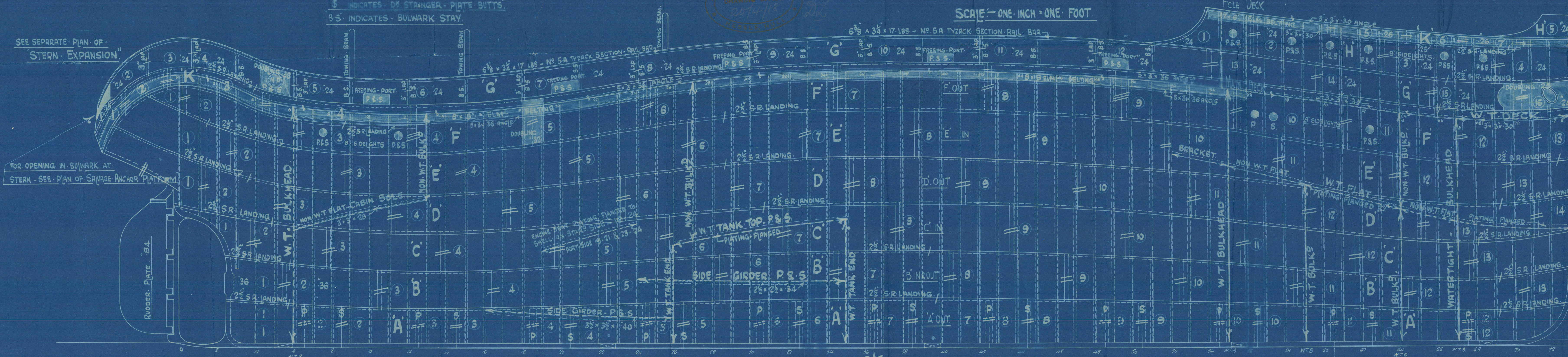
"SHELL RIVETTED THROUGHOUT WITH $\frac{3}{4}$ " DIA. RIVETS"

NOS 185-6-7 SHELL EXPANSION

SCALE $\frac{1}{4}$ " = 1 FOOT

PLATE TH. - ALL PLATES "32" EXCEPT WHERE MARKED.
BUTT RIVETING - $\frac{3}{4}$ " D.R. BUTT STRAPS; $1\frac{1}{4}$ " T.R. BUTT STRAPS.
5" D.R. BUTT LAPS; 3" S.R. BUTT LAPS; $7\frac{1}{2}$ " T.R. BUTT LAPS.
EDGE RIVETING - $2\frac{1}{2}$ " S.R. LANDINGS.
S INDICATES - DE STRANGER - PLATE BUTTS.
BS INDICATES - BULWARK STAY.

SEE SEPARATE PLAN OF
"STERN EXPANSION"

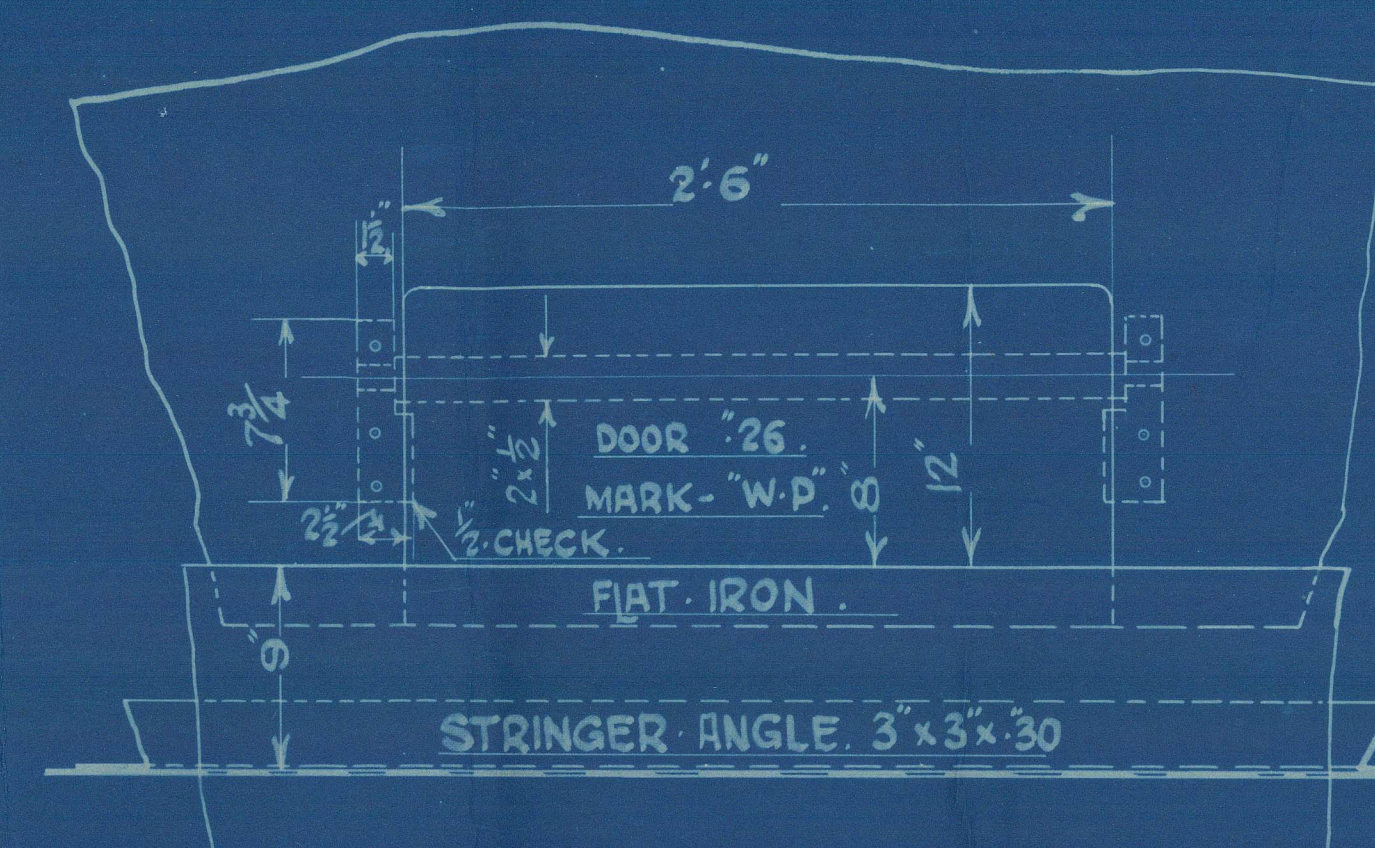


"SECTION IN WAY OF BULWARK"

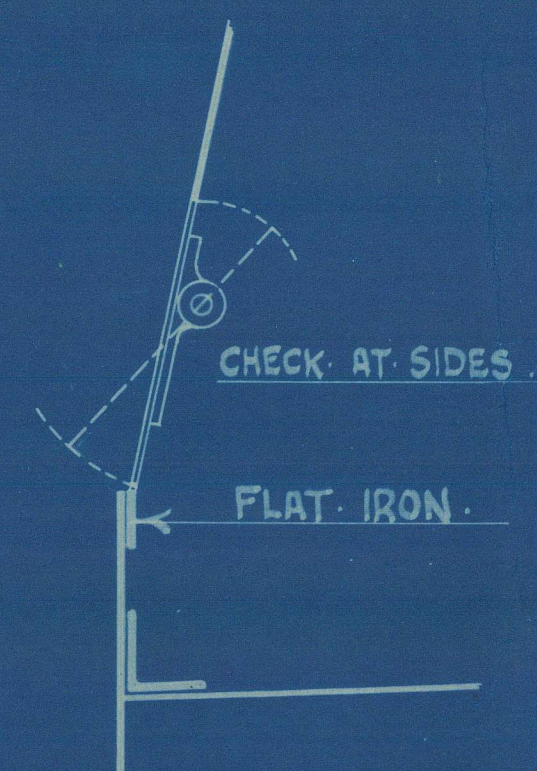
SCALE - ONE INCH = ONE FOOT

"FREEING PORTS" 10-OFF.

SCALE - $1\frac{1}{2}$ INCHES = ONE FOOT.



ELEVATION



SECTION

RECEIVED
NAVY
2 APR 1918
RECEIVED
NAVY
2 APR 1918
RECEIVED
NAVY
2 APR 1918

Shell Expansion

Livingstone & Coopers

No 185 to 190

"Rescue type" Tugs

"St. Batalph"

Hull Report No. 30.999

"St Catherine" - - -

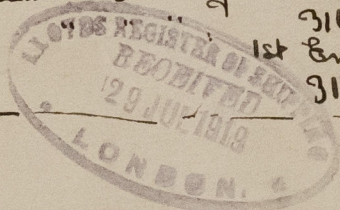
St Clear - - - 31242

"St Claude" ex "St Mary" H.R. report

31601.

1st Entry

31725



© 2021

Lloyd's Register
Foundation