

CONVERSION OF N^o 4 HOLD & N^o 4 DB TANK IN TO O.F. BUNKERS
Scale - 1/4" = one foot.

NOTES

- 1) ALL SEAMS & LAPS BELOW LOWER HORIZONTAL GIRDER TO BE REINFORCED BY ELECTRIC WELDING
- 2) ALL SEAMS & LAPS OF NEW BULKHEADS ELECTRIC WELDED.
- 3) ELECTRIC WELDED PLATE COLLARS TO BE FITTED AS NECESSARY
- 4) BULKHEAD CORNERS TO BE WELDED IN LEU OF SMITHED ANGLE SHOES
- 5) NEW GIRDERS TO BE ATTACHED TO EXISTING STRUCTURE BY ELECTRIC WELDING
- 6) FLASH POINT OF OIL NOT BELOW 750°F
- 7) MODIFIED STIFFENER SPACING ETC. LIFTED FROM SHIP 8-D-40

MODIFIED IN ACCORDANCE WITH LLOYDS' APPROVED PLAN 83-9-49

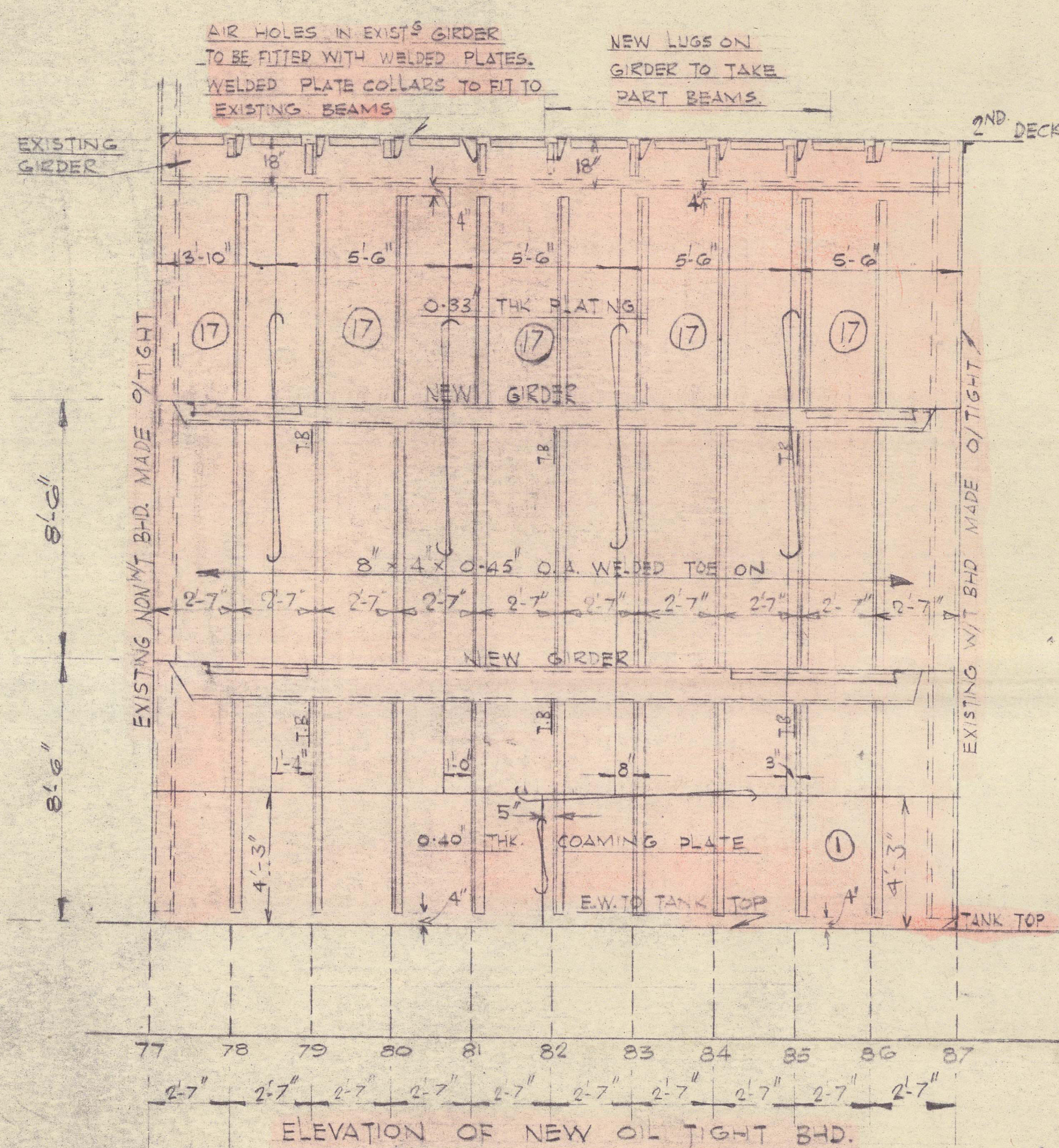
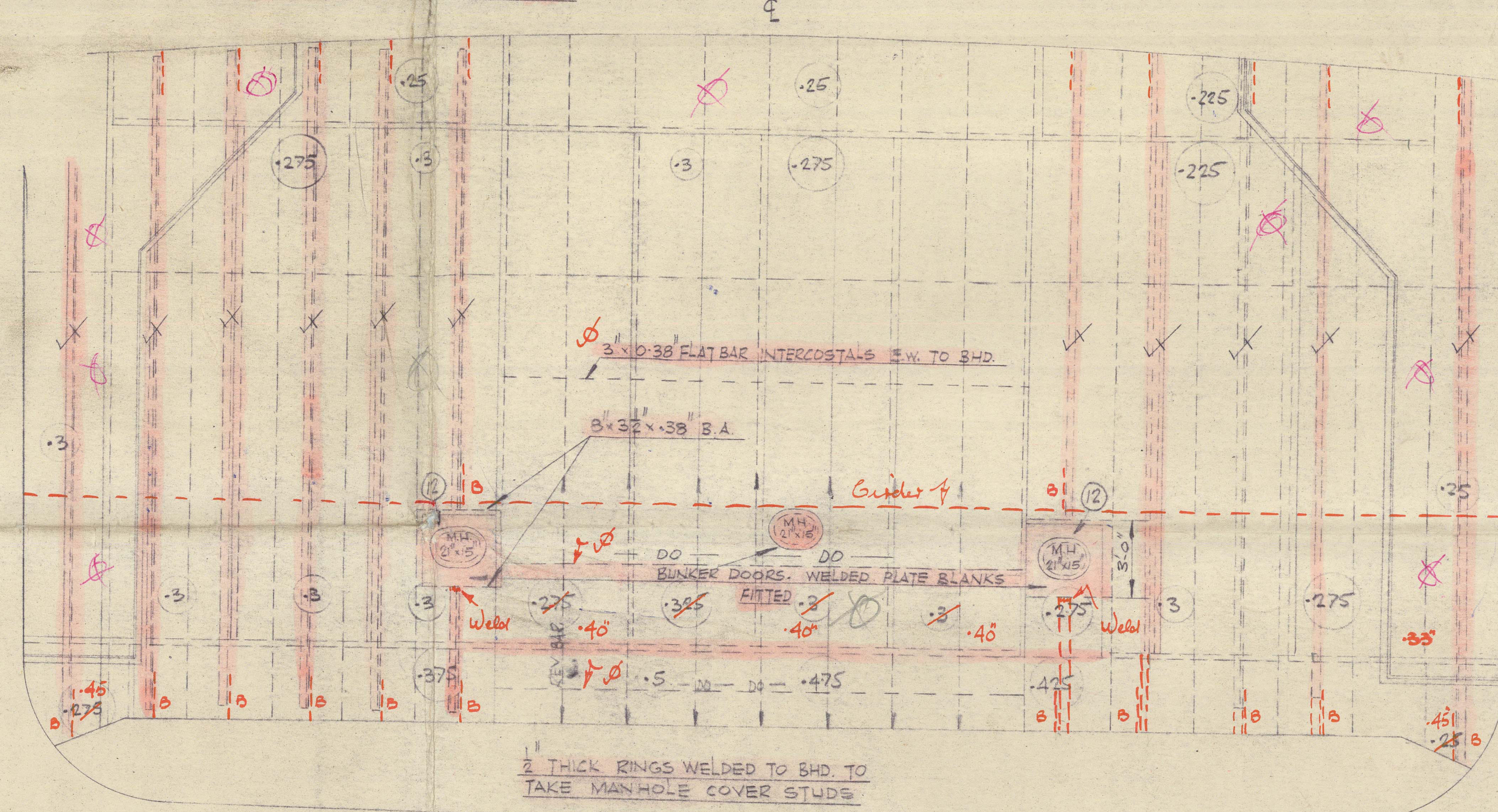
NOTE - THIS DRAWING TO BE WORKED IN CONJUNCTION WITH SPECIFICATION

NOTE - BULKHEAD PLATING TO BE LEFT LOOSE FOR SHIPPING HEATING COILS
IN TO TANKS. TO BE ARRANGED AT SHIP

3x3x3/8 2A. COILING
WELDED TO TANK TOP

SECTION THROUGH MANHOLE
IN TANK TOP

✓ ADDITIONAL $8'' \times 32'' \times 0.39''$ 3.4. STIFFS BETWEEN
EXISTING STIFFS $8\text{KIS } 20'' \times 0.42''$

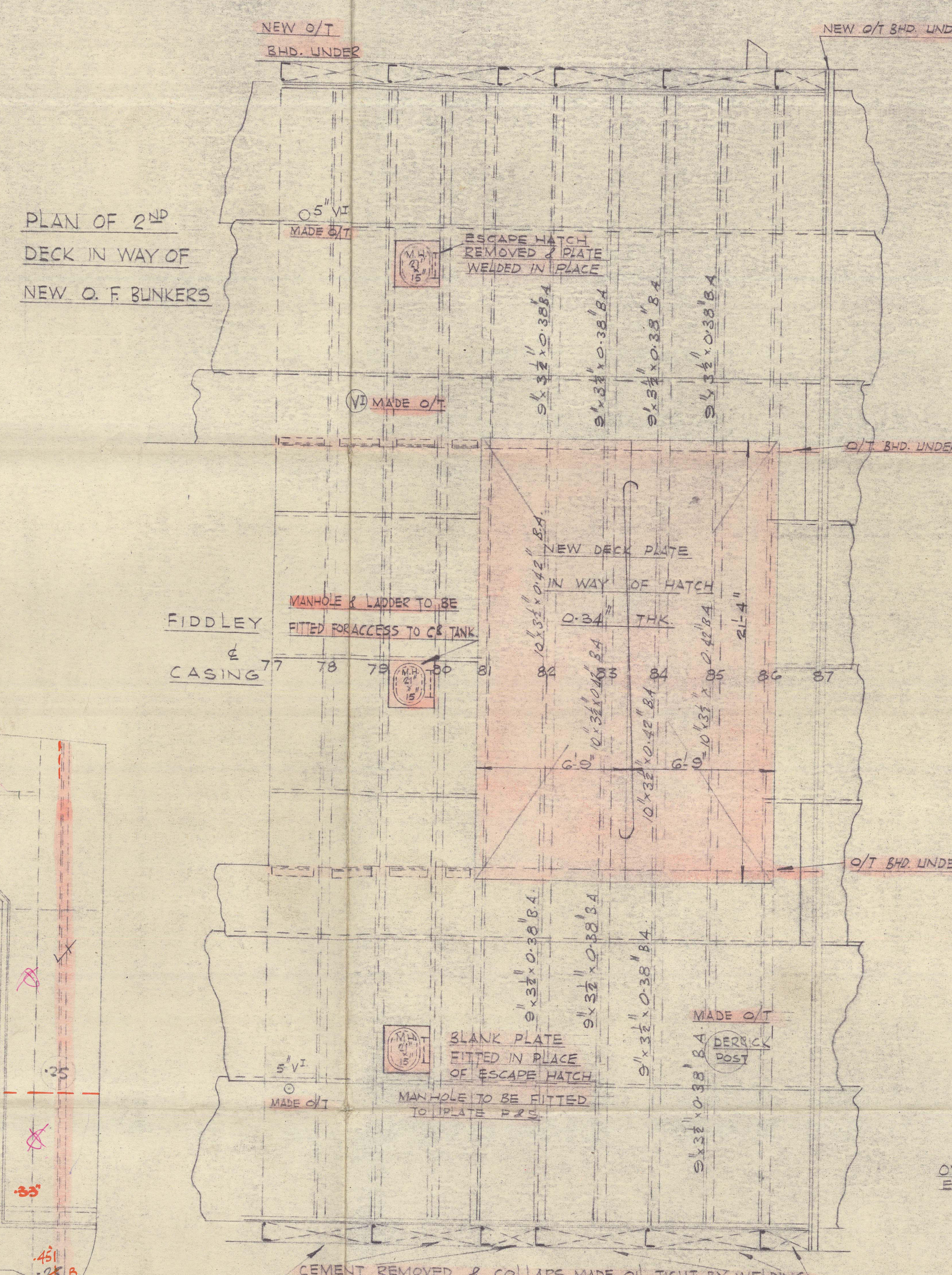


ON STAB'D, SIDE (10'-0" OFF C)

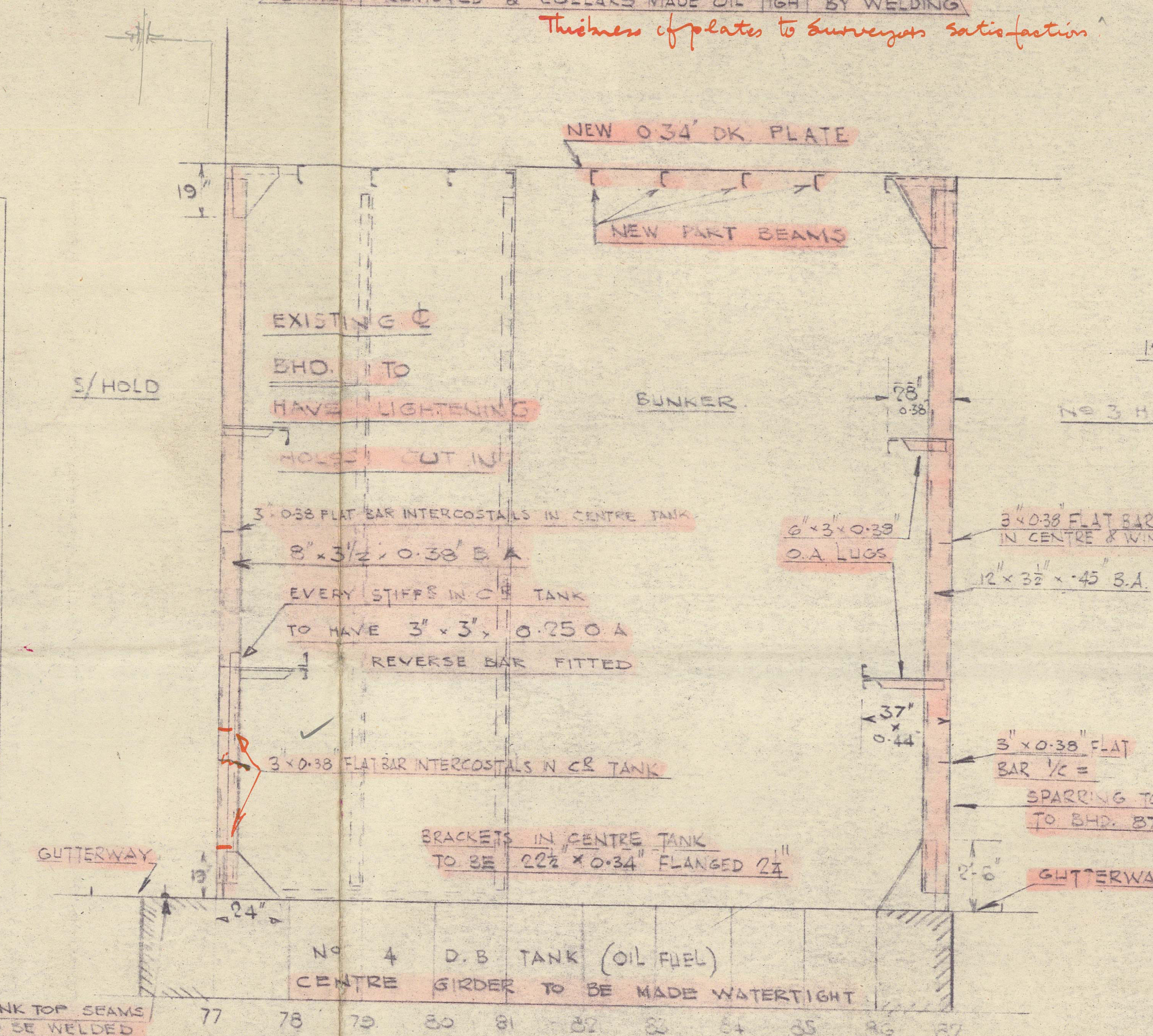
LOOKING TO PORT

BHD. ON PORT SIDE SIMILAR TO OPPOSITE HAND.

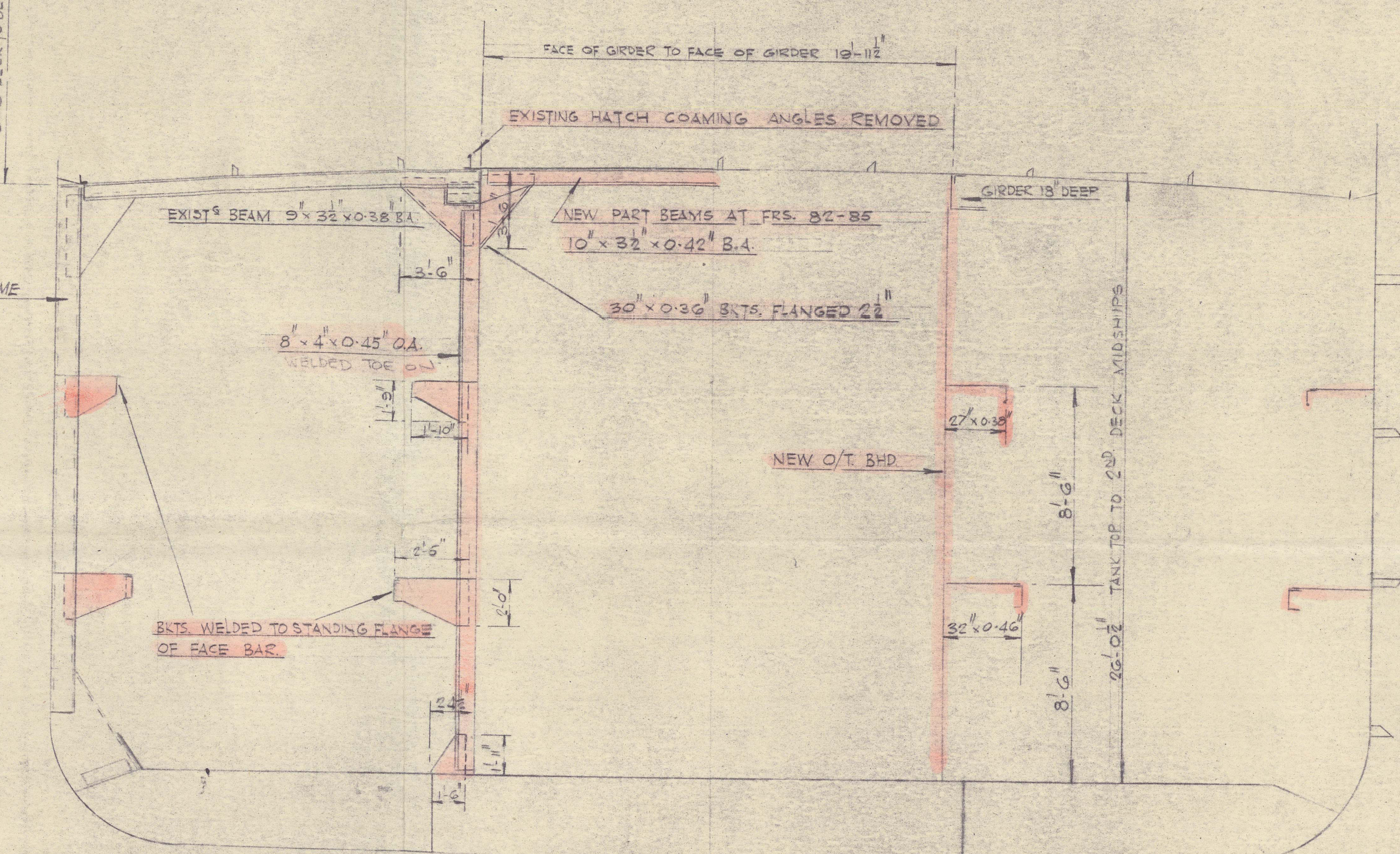
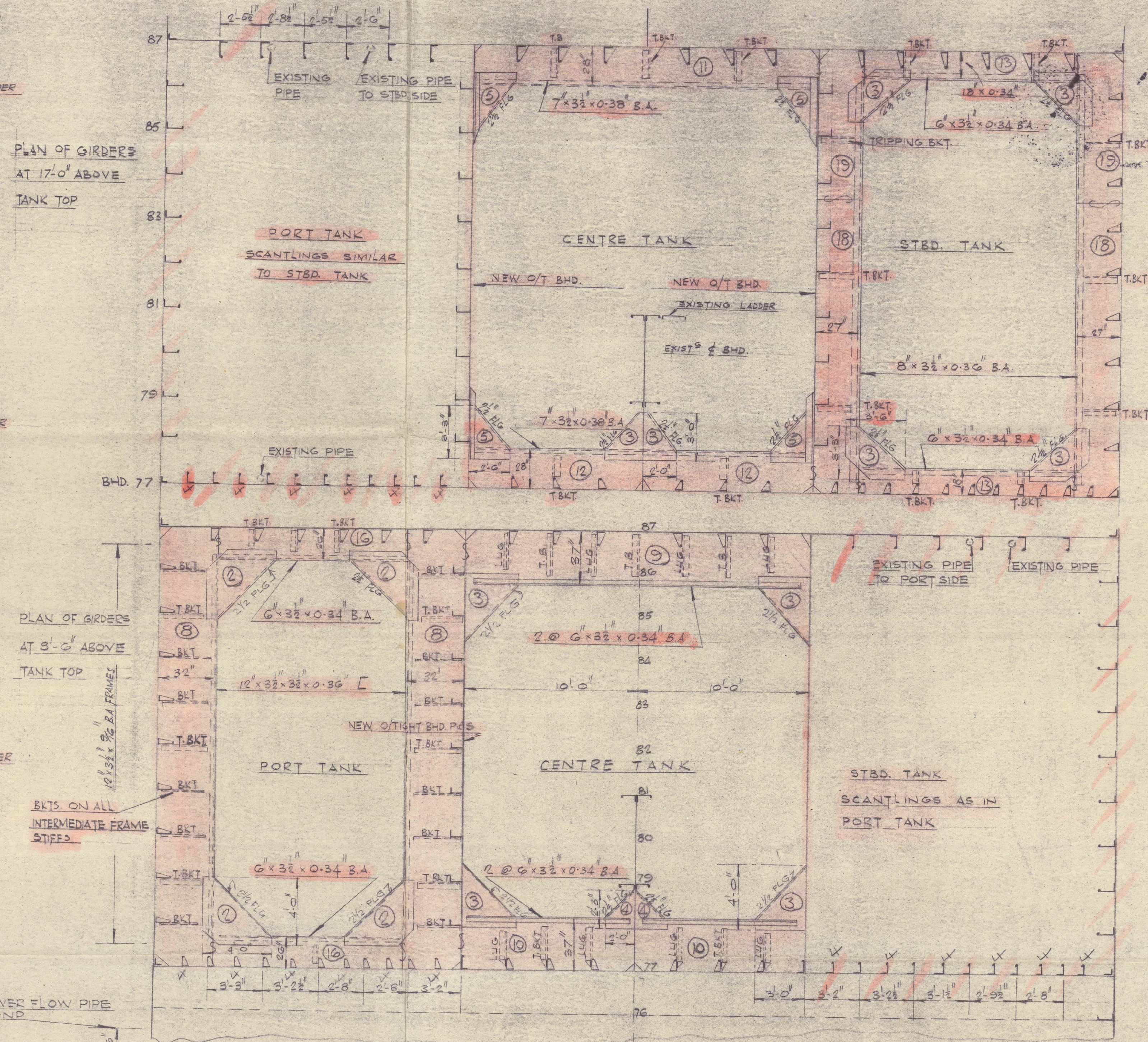
BULKHEAD 87
LOOKING AFT



CEMENT REMOVED & COLLARS MADE OIL TIGHT BY WELDING
Thickness of plates to supervisor satisfaction



LONGITUDINAL ELEVATION
THRO' CENTRE TANK
LOOKING TO PORT



SECTION THROUGH BUNKERS AT FR. 82
LOOKING AFT

SECTION THROUGH BUNKERS
BETWEEN FRs. 80-81

NEW YORK CITY.

D.F. CONVERSION.

BUNKER PLAN



© 2021

Lloyd's Register
Foundation

011397-011407-0333