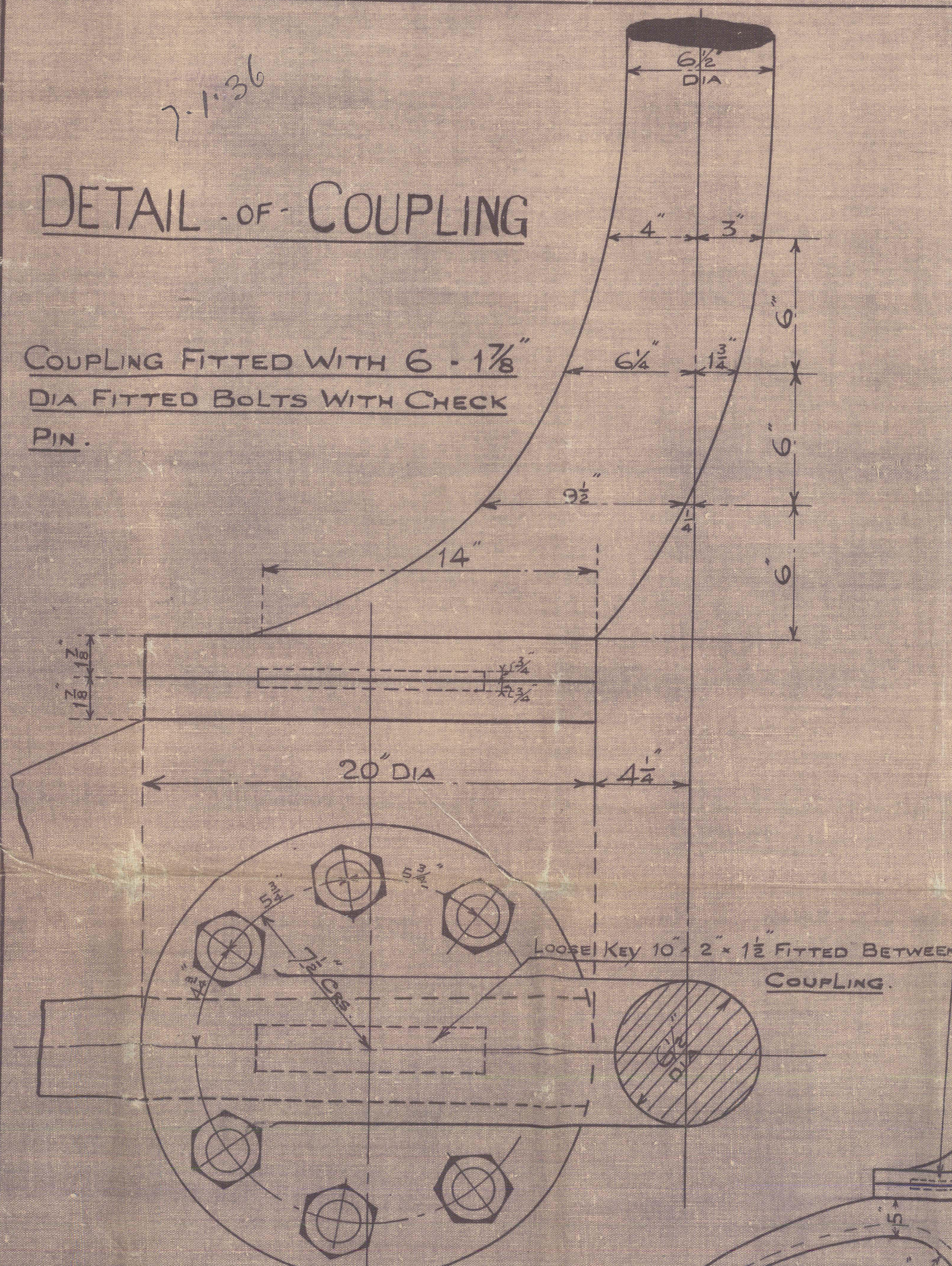


DETAIL OF COUPLING

COUPLING FITTED WITH $6 \times \frac{1}{8}$ " DIA FITTED BOLTS WITH CHECK PIN.



NUMERALS FOR RUDDER.

AREA TAKEN ABAFT FORM^{ED} EDGE OF MAINPIECE = 50.28 SQ FT

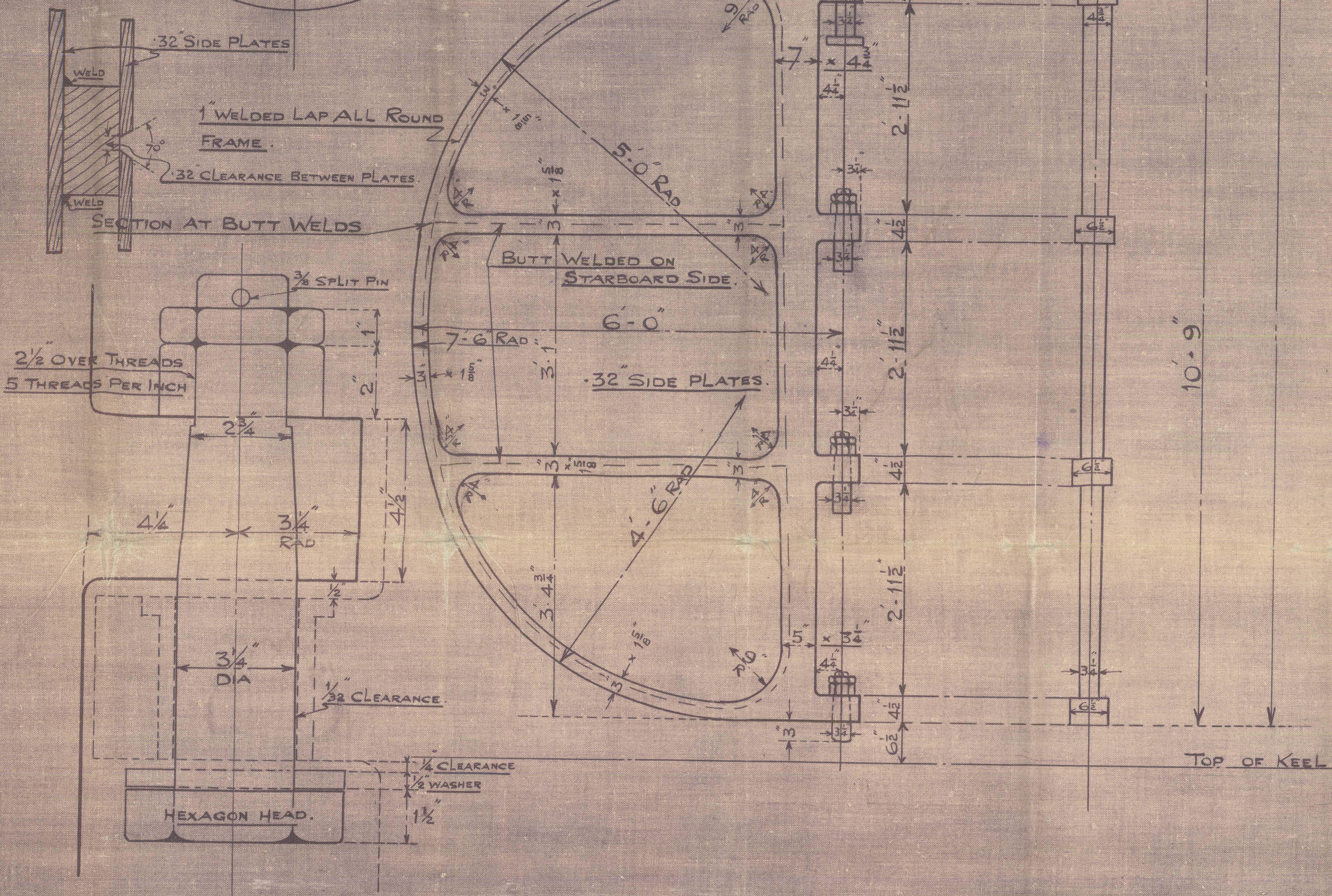
C OF G OF RUDDER ABAFT CENTRE OF PINTLES = 2.85

$A \times D = 143.3$

SPEED NOT EXCEEDING 12 KNOTS.

RUDDER TO SWING OVER TO 42°

TOTAL LENGTH



ENLARGED VIEW OF PINTLES

NOTE:- ALL PINTLES ARE LOOSE. THE CENTRES ARE TO BE KEPT IN LINE WITH CENTRES OF HOLES IN STERNPOST.

TOP PINTLE ONLY FITTED WITH HEXAGON LOCKING HEAD.

SHIP NO 611

STERNFRAME

SCALE 1" = 1 FOOT.

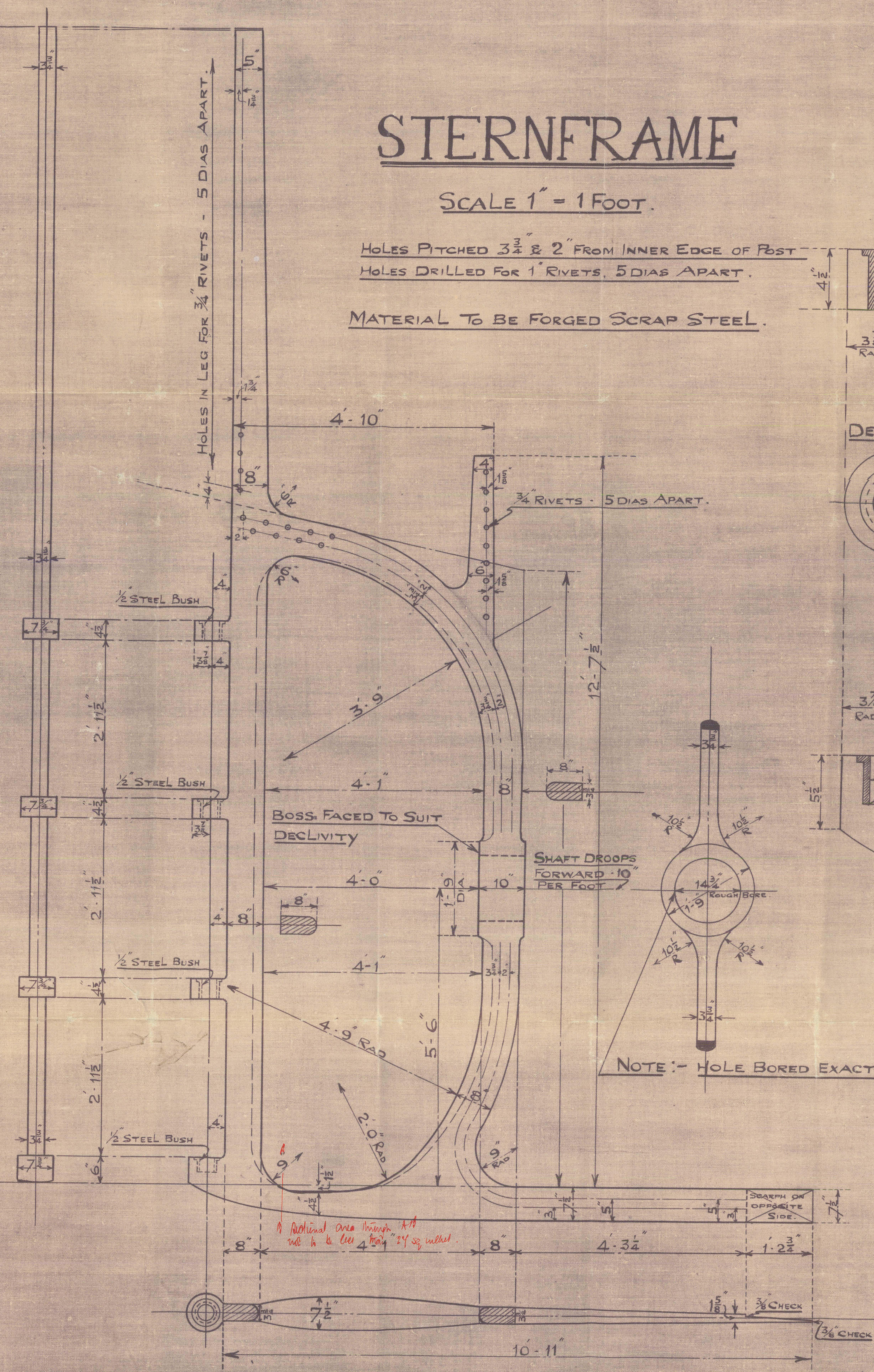
HOLES PITCHED $3\frac{3}{4}$ " & 2" FROM INNER EDGE OF POST

HOLES DRILLED FOR 1" RIVETS, 5 DIAS APART.

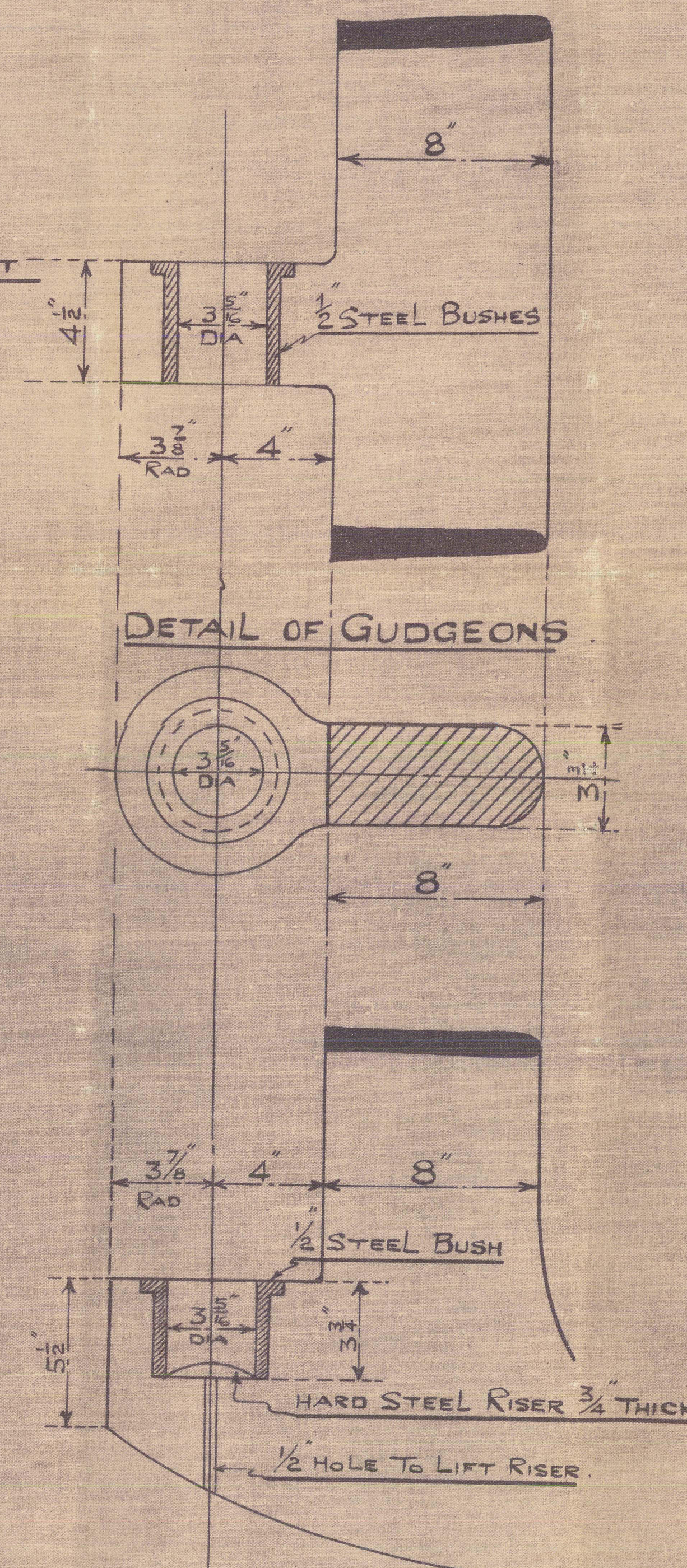
MATERIAL TO BE FORGED SCRAP STEEL.

TOTAL HEIGHT ABOVE TOP OF KEEL

STERN POST GUDGEONS TO BE FACED



DETAIL OF GUDGEONS



BOTTOM GUDGEON.

SCALE 3" = 1 FOOT

NOTE:- HOLE BORED EXACTLY TO SIZE GIVEN VIZ:- $14\frac{3}{4}$ "

COOK WELTON & GEMMELL LTD

SHIPBUILDERS.

BEVERLEY.

APPROVED BY LLOYDS.

COOK WELTON & GEMMELL LTD

YARD No. 611

STERN FRAME AND RUDDER.

U.S.	<u>"Cape Comorin"</u>
ULL REPORT NO.	<u>46829.</u>



© 2021

Lloyd's Register
Foundation

011397-011407-0243