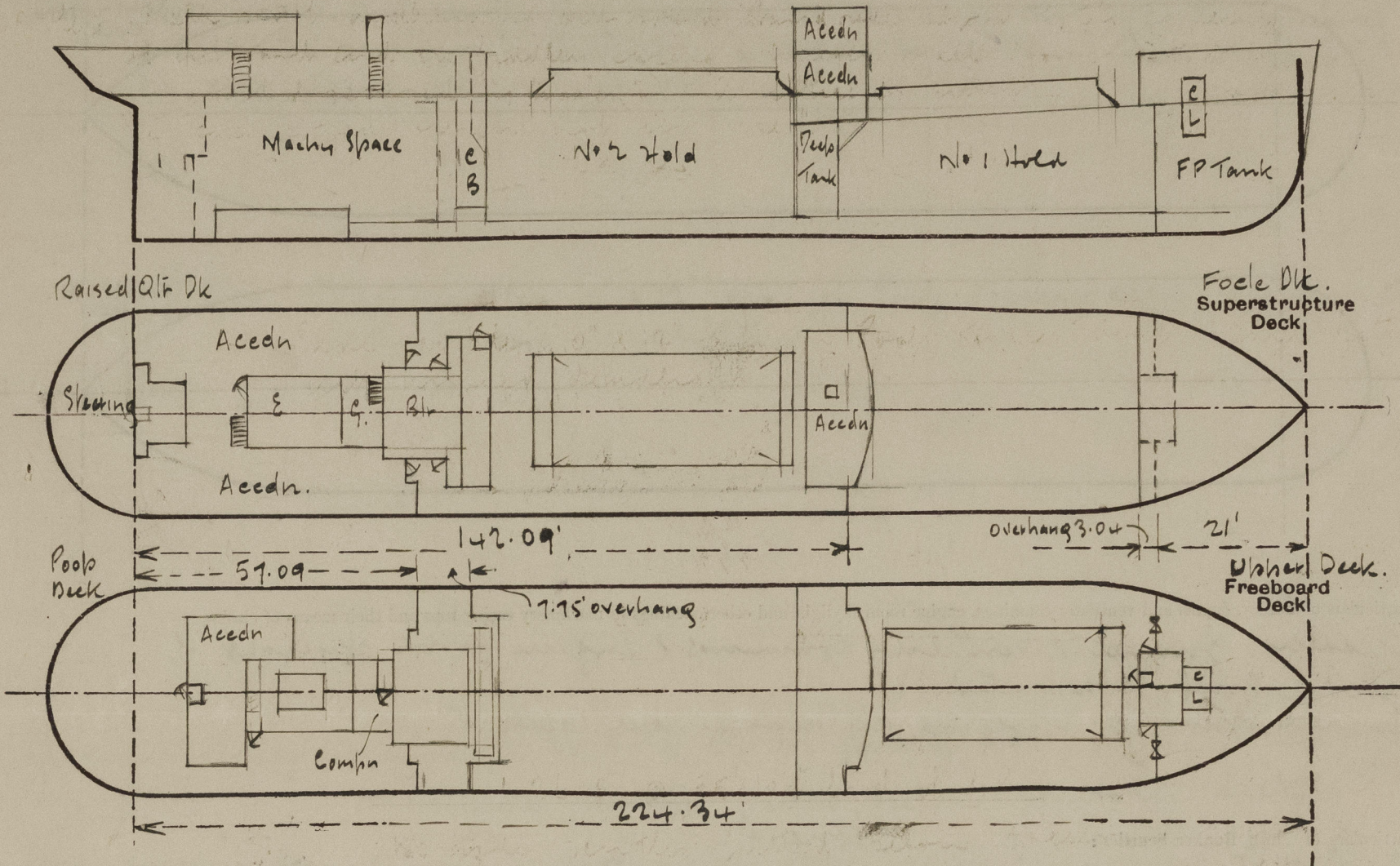


Lloyd's Register of Shipping.
SURVEYS FOR FREEBOARD.
(CONDITIONS OF ASSIGNMENT.)

Ship's Name POOLE QUAY Port of Survey Sunderland.
Official Number 183045. Surveyor's Signature Jas W Rennie
Nationality and Port of Registry British, London. Date of Survey Whitby building.

Disposition and dimensions of superstructures, trunks, deckhouses and machinery casings to be inserted in the diagrams and tabular statement: -

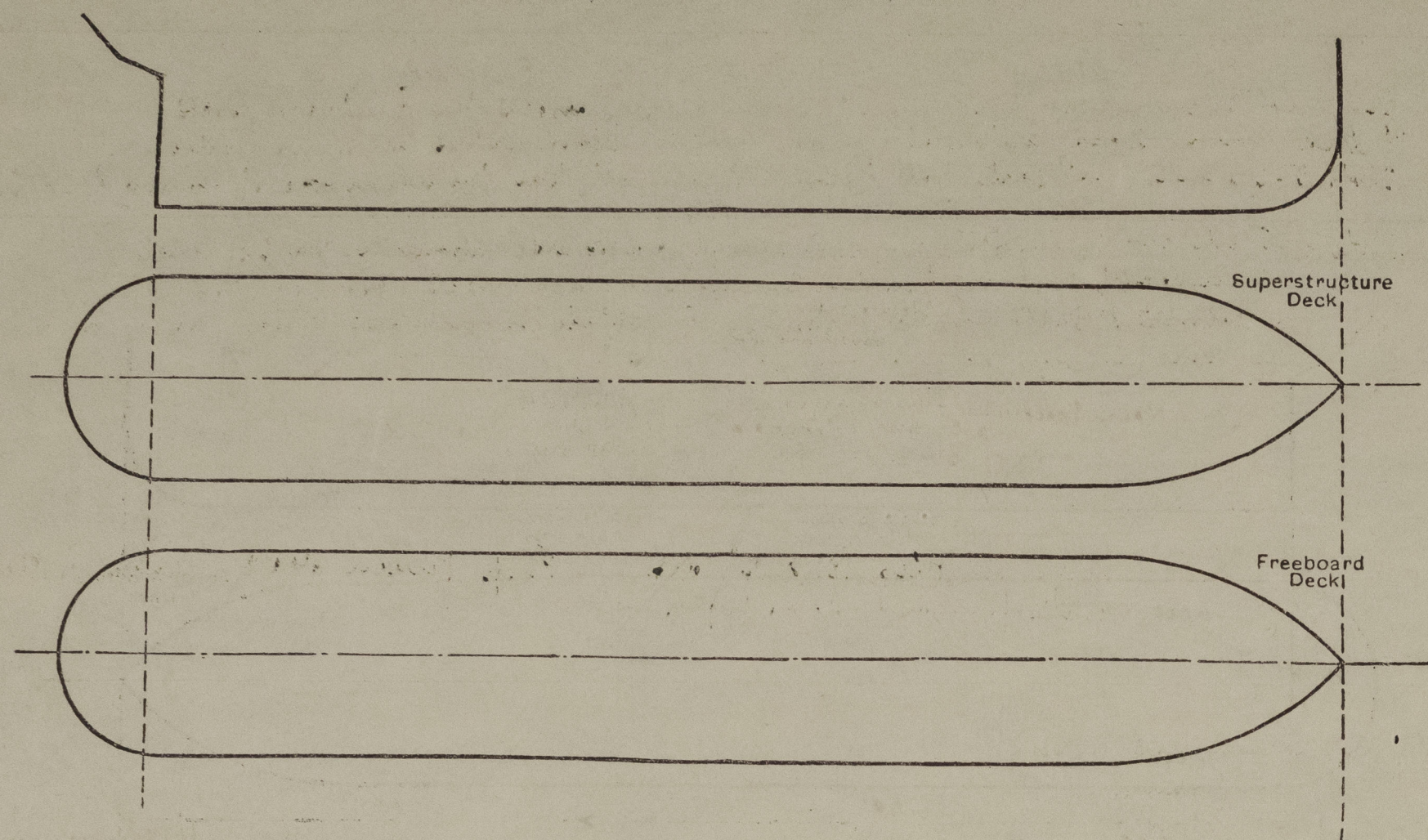


Particulars of Superstructures, Trunks, Casings, Deckhouses.								
	Coaming	Plating	Stiffeners	Spacing	End Attachments of Stiffeners	Size of Openings	Height of Sills	Height of Casings
Poop Bulkhead <i>Sides Bunker front</i>	✓	25 ✓	2 1/2 + 1 1/4 round 1 + 3 1/2 + 3 1/2	30" 33" ✓	✓	2 @ 5' x 2' ✓	14 ✓	1' ✓
Raised Quarter Deck Bulkhead ...	✓	32 ✓	4 + 3 + 30 L ✓	24 - 31 1/2" ✓	Welded ✓	✓	✓	3' - 10" ✓
Bridge, After Bulkhead ...	✓							
Bridge, Forward Bulkhead ...	✓							
Forecastle Bulkhead ...	✓	25 ✓	3 + 3 + 30 L ✓	21 - 30" ✓	Dk bars ✓	2 @ 4' 6" + 3' - 1" 2 @ 4' 6" + 2' 1 @ 4' 6" + 2' - 24"	14" ✓	1' ✓
Trunk, Aft ...	✓							
Trunk, Forward ...	✓							
Exposed Machinery Casings on Freeboard or Raised Quarter Decks ...	30 ✓	26 ✓	3 + 3 + 30 L ✓	27" ✓	✓	2 @ 4' - 9" + 2' ✓	18 ✓	1' ✓
Exposed Machinery Casings on Superstructure Decks ...	✓							
Machinery Casings within Superstructures not fitted with Class I Closing Appliances ...	30	26	3 + 3 + 30 L	24" - 36"	Bkl. top Dkbar bkn ✓	1 @ 4' + 18" ✓	15" ✓	1' ✓
Deckhouses on Flush Deck Ships ...								

Particulars of Closing Appliances (state if capable of being manipulated from both sides).	
Poop Bulkhead ... on R. Q. Dk ...	Hinged bulk doors 2" thick securing from either side. ✓
Raised Quarter Deck Bulkhead ...	No openings.
Bridge, After Bulkhead ...	✓
Bridge, Forward Bulkhead ...	✓
Forecastle Bulkhead ...	Sliding boards 2 1/2" thick in welded channels. ✓
Exposed Machinery Casings on Freeboard or Raised Quarter Decks ...	2 Hinged steel doors securing from either side. & hinged steel w. T. door securing from either side. ✓
Exposed Machinery Casings on Superstructure Decks ...	Hinged steel doors securing from either side. ✓
Machinery Casings within Superstructures not fitted with Class I Closing Appliances ...	✓
Deckhouses on Flush Deck Ships ...	Hinged steel door securing both sides. ✓

PARTICULARS OF PROTECTION TO OPENINGS, ETC.

The following diagrams should be used to indicate the positions of cargo and coaling hatchways, gangway, cargo and coaling ports, ventilators, companionways, etc., which would affect the seaworthiness of the ship:—



Particulars of fiddle, funnel and ventilator casings, engine room skylight and other openings in machinery casing tops and their means of closing:—

Fiddle, funnel & ventilator casings & engine room skylight of steel strongly constructed. Fiddle openings protected by hinged steel covers.

Particulars of Flush Bunker Scuttles:—

None.

Particulars of Companionways:— Access hatches to holds, 1 in fore part, 1 in bunker casing side aft, each secured by hinged steel door w.t. operating both sides. Sills 24" Upper Dk, 18" R. Qk Dk. Steel companion on poop Dk leading to crew space secured by hinged steel door operating from both sides 18" sill.

Particulars of Ventilators in exposed positions on freeboard and superstructure decks:—

Deck	Position	Ventilator Details
Fore Dk.	Tween Deck	1 - 6" dia 36" high 30 thick
"	"	2 G.W. vents 6" x 4" 18" high
Upper Dk.	On W. hatch top	2 vents 1-15" dia 1-12" dia 15" high 36 thick
R. Qk Dk.	No 2 "	2 " 1-15" dia 1-12" dia 15" high 36 "
"	Stowage	2 G.W. vents 6" x 4" 30" high
Poop Dk.	Tween Deck	4 - 6" dia 30" high 30 thick
"	"	2 - 8" " 30" " 30 "
"	Crew space	1 - M.V.'s 5 x 6" dia 30 thick
"	"	13 G.W. vents 6" x 4" 18" high

Ventilators fitted with wooden plugs & canvas covers.

Particulars of Air Pipes in exposed positions on freeboard, raised quarter, or superstructure decks:—

Deck	Position	Air Pipe Details
Fore Dk	Fore peak	1 - 6" dia 1-3" dia 18" high to opening
Upper Dk	W. hatch	2 - 4" " 6-8" high
"	Deep Tank	2 - 6" " 6-6" "
Raised Quarter Dk	No 2 hatch	2 - 5" " 2-6" "
"	No 3 "	2 - 4" " 2-2 1/2" dia 2-6" high
Poop Deck	No 4 & 5 hatch	4 - 2 1/2" dia 18" high
"	Aft tank	2 - 3" " 18" "

Air pipes fitted with wooden plugs and/or canvas covers.

Particulars of Gangway Cargo and Coaling Ports:—

None

Pool Quay.

Particulars of Scuppers and Sanitary Discharge Pipes:—

Scuppers & sanitary discharges from spaces above the freeboard deck fitted with brass automatic non return storm valves at ships sides. Slots 6" x 4" x 2" both each side fitted in gunwale bar for drainage of Upper & R. Qk Dks.

Note: 15" ash shoot discharging overboard stowed side about R. Qk Dk level. At inboard end in fiddle casing a hinged steel door is fitted opening inboard & secured by toggle (2). A notice is fitted - "This door is to be kept closed when not in use". 18" sill.

Particulars of Side Scuttles:—

Side scuttles 10" x 12" dia in Poop & crew deck each fitted with hinged deadlights.

Vertical distance of Sill of lowest Side Scuttle above top of keel 26'-0" @ 55'-10 1/2" fore of A.P.

No side scuttles fitted below freeboard deck.

Particulars of Guard Rails:—

Guard rails on fore & poop decks 3'-6" x 3'-9" high with 2 rails & stanchions spaced 4' to 5' apart.

Steel bulwarks 4' x 3'-9" high fitted along Upper & Raised Quarter Decks strongly constructed & efficiently stowed.

Particulars of Gangways, Lifelines, etc.:—

Provision made for rigging lifelines on each side of vessel along freeboard deck.

Particulars of Freeing Arrangements.

	Length of Bulwark	Height of Bulwark	Size of Freeing Ports	Number each side	Area each side	Rule area each side
After Well R. Qk Dk.	81.75'	3.15'	6.25' x 3.0'	1	18.00 sq	11.55 sq
			51.15' x 3.0'	1		
Forward Well Upper Dk.	41.25'	4.00'	15' x 1.0' semi circular	1	13.5 sq	12.61 sq
	58.21'		41.00' x 3.0'	1		12.32

State position of each freeing port:— R. Qk Dk After Well: 5'-9" x 7'-3" respectively from fore end R. Qk Dk to fore end of opening. Forward Well: 4'-0" x 13'-0" from R. Qk Dk front bulwark to after end.

(F. and A. position and height above deck edge) Height above deck edge:— R. Qk Dk 8" Upper Dk 9" Slots only.

State whether the freeing ports are fitted with shutters, bars, or rails, and give particulars of such:—

Additional area where sheer is less than standard.

PARTICULARS OF PROTECTION TO OPENINGS, ETC.

HATCHWAYS ON FREEBOARD AND SUPERSTRUCTURE DECKS.									
		Upper Dk		Rak Dk				Casing Top	
Description of Hatchway		N°1		N°2				Bunker Hatch	
Dimensions of Hatchway		45' x 21' ✓		47' x 22' ✓				45' x 22' ✓	
COAMINGS	Height above Deck	45" ✓		45" ✓				3+3+30 ✓	
	Thickness	.44 ✓		.44 ✓				✓	
	Sides	12+3/4 x .44 Sides		12+3/4 x .44 Sides				✓	
	Ends	1+3/4 x .44 end		1" x 5" 5 at ends				✓	
Stiffeners		SP 552 F ✓		SP 55 1 A					
Brackets, Stays									
HATCH BEAMS	Number	5 sections of patent steel cover		each section as per detail below					
	Spacing	10'-6"		11'-0"					
	Scantling and Sketch								
	Bearing Surface								
FORE AND AFTERS	Number	29		26					
	Spacing	25'-4"-27'-2"		27'-26 1/2" apart					
	Unsupported Lengths	approx 9'-0"		approx 9'-0"					
	Scantling* and Sketch								
Bearing Surface		Plan View of cover No 1 Hatch		Plan View of cover No 2 Hatch					
HATCH COVERS	Material	Macgregor Patent Steel Covers		(in accordance with approved plan)				WP 2 1/2 ✓	
	Thickness	.29 ✓		.26 ✓				Fa A 23/4 ✓	
	How fitted	At workshop (see above sketch)						24" ✓	
	Bearing Surface							2 ✓	
Spacing of Cleats		35"-39" ✓		35"-39" ✓					
Number of Tarpaulins		✓		✓					

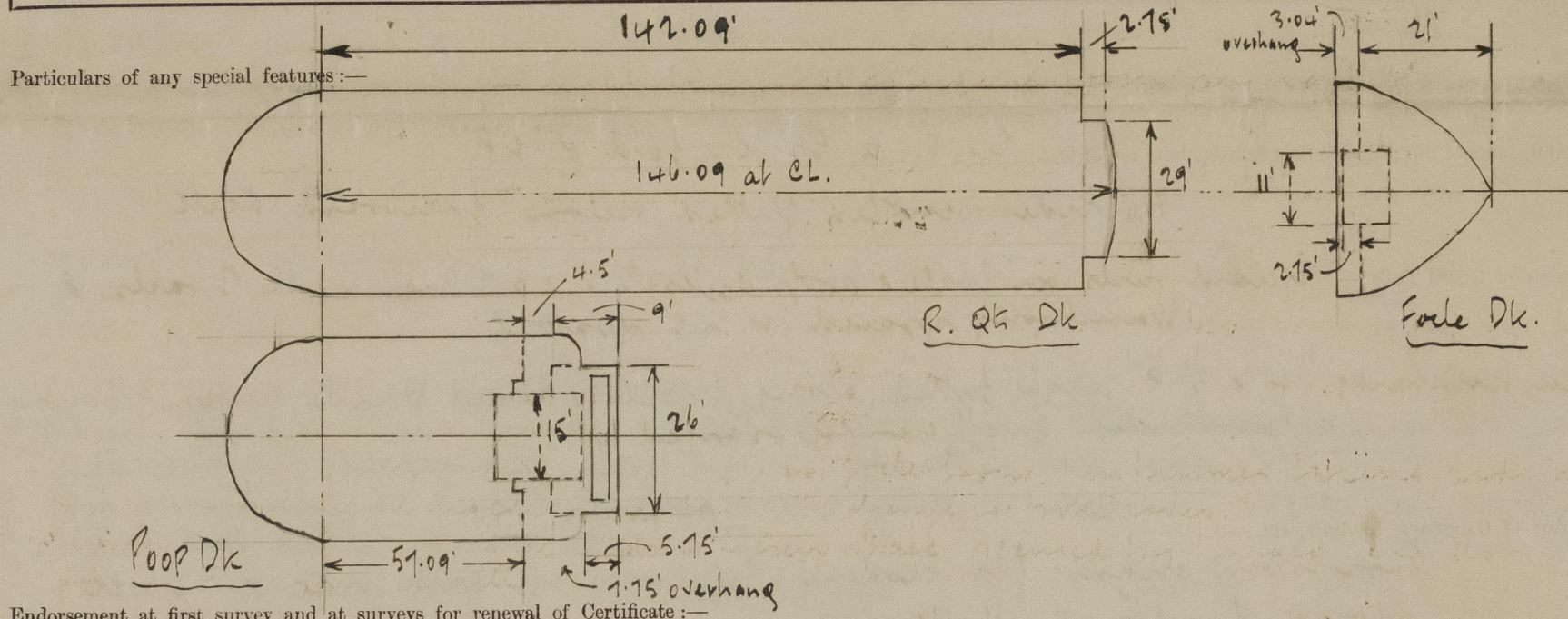
*Are wood fore and afters steel shod at all bearing surfaces? ☒ Yes

Are battens and wedges efficient and in good condition? ☒ Yes } Bunker Hatch.

Are tarpaulins in good condition and in accordance with rule requirements? ☒ Yes

Are lashings provided in accordance with rule requirements? ☒ Yes

Note: Galvanized steel bands fitted to ends of hatch covers.



Endorsement at first survey and at surveys for renewal of Certificate:—

The fittings and appliances are in accordance with the particulars shown on this form (or as now modified) and are in good condition.