

EQUIPMENT:

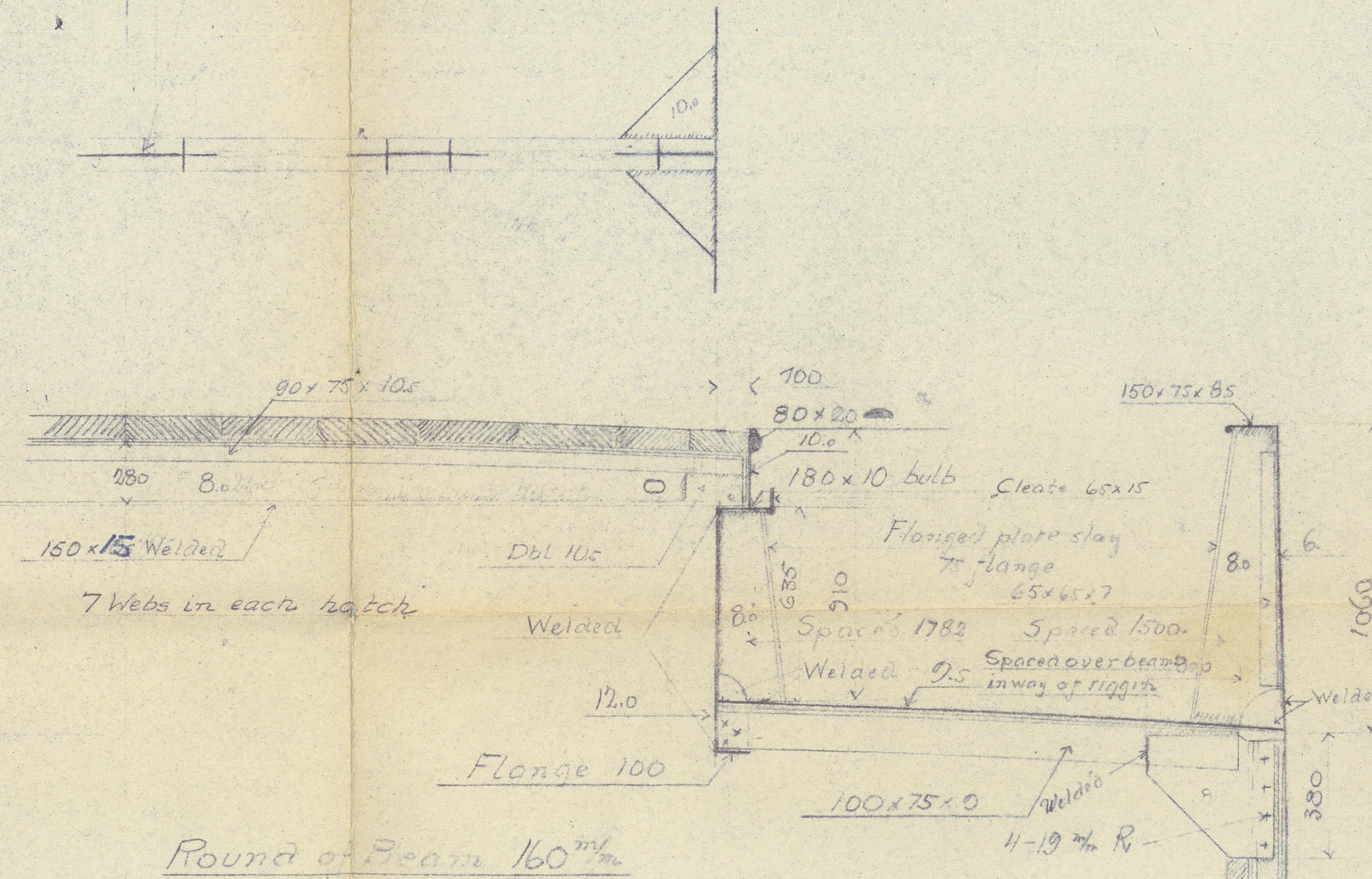
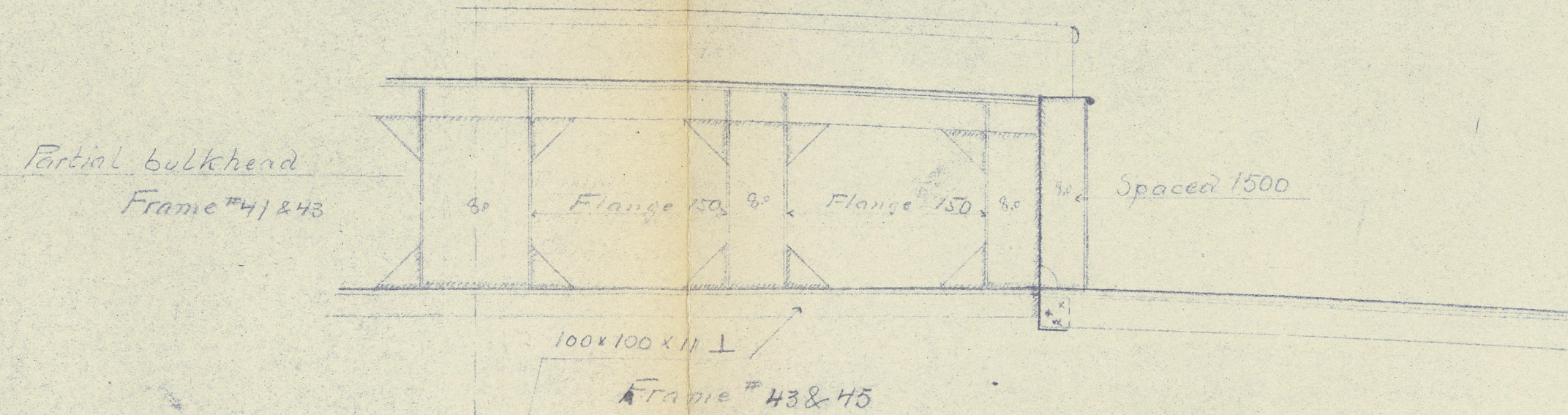
1 Bower Anchor	Stockles	10 1/4 Cwt = 520 kg	} Collee tive = 29 1/4 Cwt = 1486 kg. Weight
1 "	" "	9 3/4 " = 496 "	
1 "	" "	9 1/4 " = 476 "	
1 Stream	er stock	3 1/2 " = 178 "	
165 Fms.	308 m	Stud Chain	Cables 1 1/2" = 27 m/m
60 "	110 "	Steel Wire	2 1/2" = 63 s "
75 "	137 "	Manilla	7 1/2 " = 190 "
90 "	165 "	Steel Wire	2 " = 50 s "

DIMENSIONS.

Length for numerals	46.37	=	158.1
Breadth " "	7.90	=	23.5
Depth " "	4.30	=	17.1
$L \times D = 46.37 \times 4.3$	=	199	2145
$L (B+D) = 46.37 (7.9 + 4.3)$	=	565	6084
$E N = 565 + 215 + 18.5 \times 9$	=	615	6560
$\frac{L}{D} = 10.78$			

Trunk B.T.W. # 41 to 48

Unstayed mast 762 mm diam on frame 44



B.T.V. Frame # 51669
Spaced 595

Frames	80.65x9
Rev frames	5to46
on every frames	
Rev frames	47to57
"	58to66

Water

Wash plate 70

100x65x8 stiffener
on frs. 69, 70 & 71.

Frame # 70

AS BUILT

-GRISSEHAMNS VARV-
550 Tons D.W MOTORFARTYG

MIDSKEPPS-SEKTION

SKALA 1:20

Mass. Lloyds Register # 100A1
Partly EL Welded

Kapten PAUL G. WIKBORG
Kons. Fartygsinspektör
Tel. 11 77 54
Drottningg. 39, Stockholm

Рис. № 341

Stockholm den 20/47 © 2021
Lloyd's Foundation

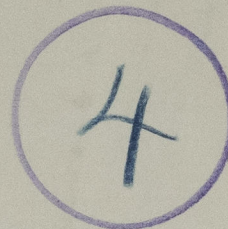
© 2021

10/1/11

Lloyd's

Found

RECORDS DEPT.:
LONDON



Blenda ★

Midship Section (as Built)



© 2021

Lloyd's Register
Foundation

011378-011385-0144