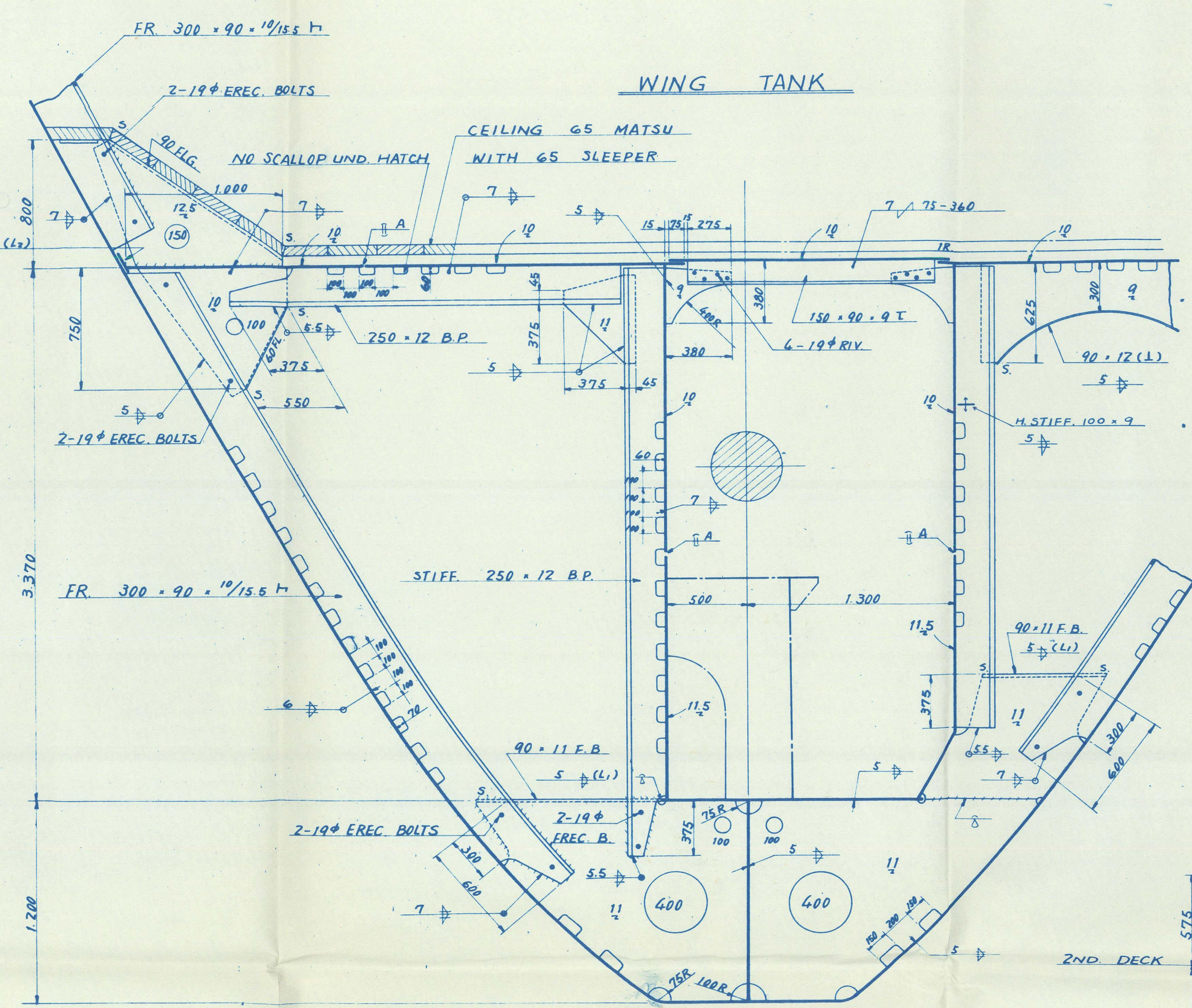
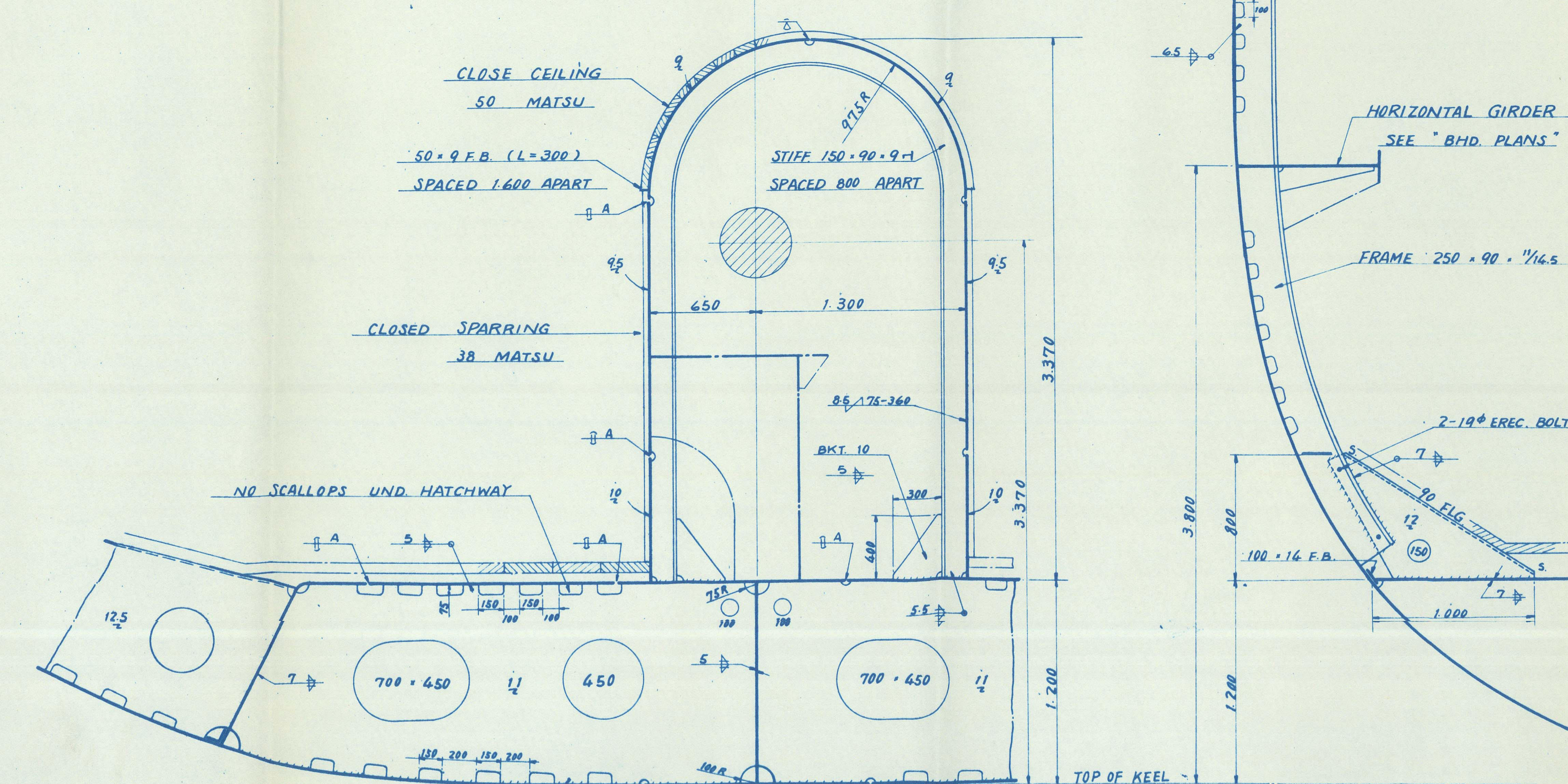


EQUIPMENT NUMBER		FOR LLOYD		FOR NIPPON KAIJIKYOKAI	
FOR HULL	$L(B+D) = 85(10+4) = 656.70$			$L(B+D) = 165.00(19.60+12.50) = 665.50$	
FOR FORECASTLE	$85(4.4) = 85(9.98+2.30) = 19.51$			$75(4.4) = 75(9.98+2.30) = 17.22$	
FOR MIDSHIP HOUSE ON SHELL	$75(4.4) = 75(2.30+27.60) = 47.27$			$50(4.4) = 50(2.30+27.60) = 31.51$	
FOR SALOON DECK HOUSE	$75(4.4) = 75(2.60+27.60) = 53.63$			$50(4.4) = 50(2.60+27.60) = 35.62$	
FOR BOAT DECK HOUSE	$75(4.4) = 75(2.50+13.80) = 25.88$			$50(4.4) = 50(2.50+13.80) = 23.00$	
FOR NAVIGATION BRIDGE	$75(4.4) = 75(2.30+9.80) = 16.91$				
TOTAL	6730.50			6761.85	
	50.918' 63"				

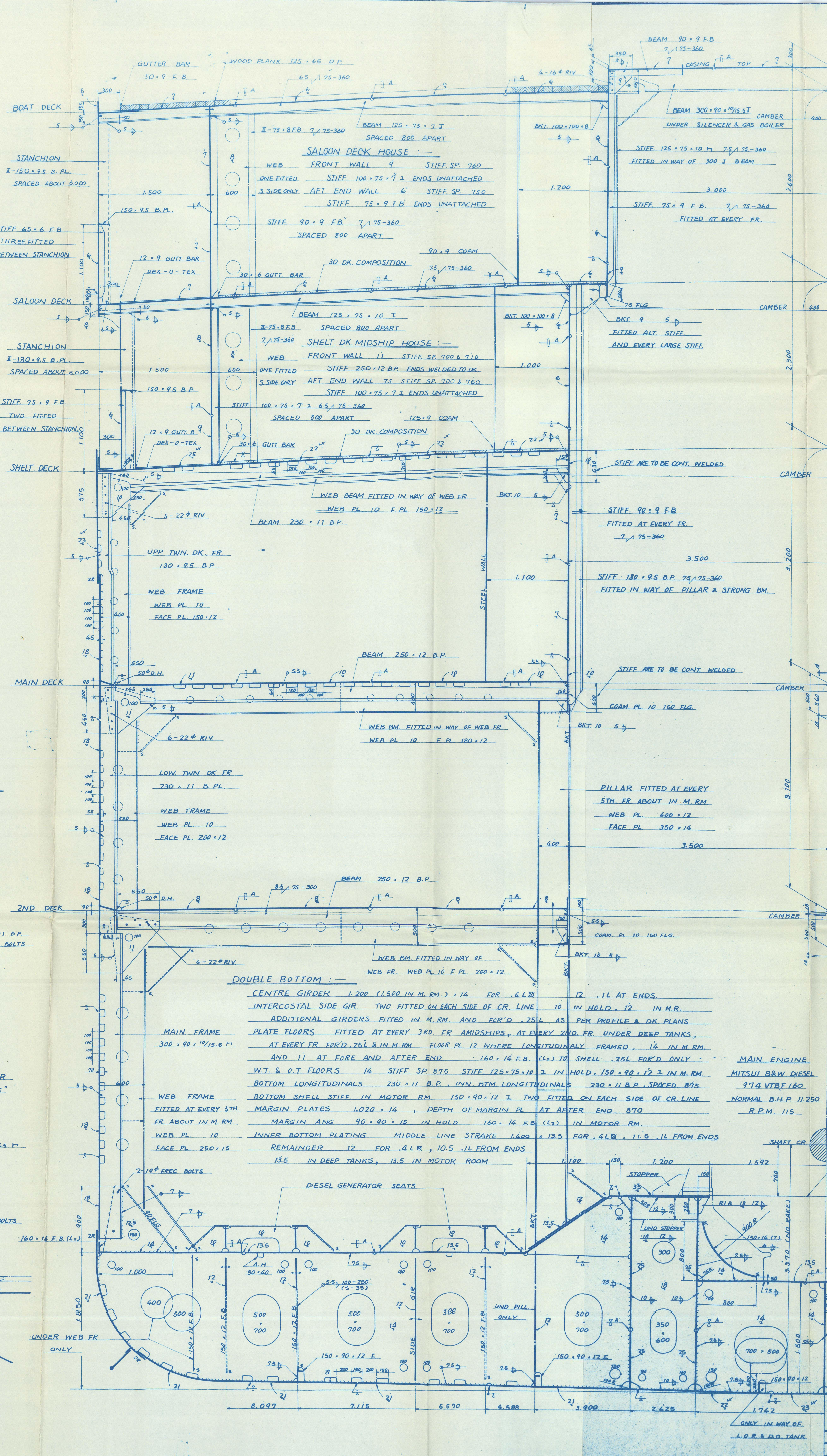
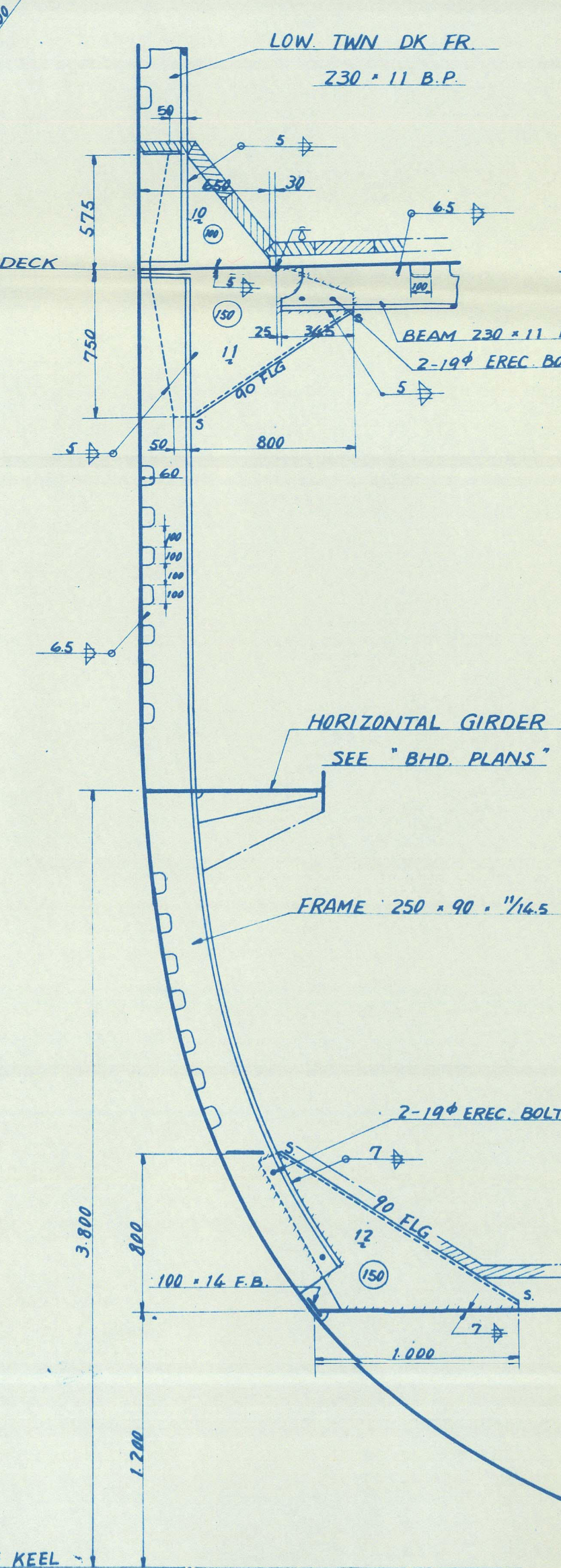
EQUIPMENT (EQUIPMENT LETTER C)	
STACKLESS BOWER ANCHORS	(80" x 10" x 1/2") 4.250'
STUD LINK CHAIN CABLE (SPECIAL STEEL GRADE I)	(180" x 1/2") 4.250'
STREAM ANCHOR (EX. STOCK)	(120" x 1/2") 4.250'
STEEL WIRE ROPE FOR STREAM ANCHOR	(240" x 3/8") 4.250'
TOWLINE (FLEXIBLE STEEL WIRE ROPE)	(240" x 3/8") 4.250'
MOORING ROPES (FLEXIBLE STEEL WIRE ROPES)	(240" x 3/8") 4.250'
(MANILA ROPES)	(240" x 3/8") 4.250'



SHAFT TUNNEL & AFTER END FLOOR IN DOUBLE BOTTOM



FRAMES IN WAY OF DEEP TANK



# MIDSHIP SECTION

SCALE 1/25

CLASS: LLOYD'S + 100 A1 LONG FRAMING AT BOTTOM  
NIPPON KAIJIKYOKAI'S NS

SCANTLING DRAFT 8" 500  
CARRYING VEGETABLE OIL IN DEEP TANKS

STEEL HATCH COVER  
(MAC GREGOR TYPE)

SHELTER DECK PLATING:

STRINGER PLATE 1.800 x 25 FOR 4LR

DECK PLATING 22" OUTSIDE LINE OF OPEN FOR 4LR

8.5 INSIDE 11 AT ENDS

STAY FITTED AT ALT. FR.

BEAM 230 x 11 B.P.

UPP. THIN DK FR. 230 x 11 B.P.

WEB BEAM FITTED AT HATCH END

WEB PL 10 F.P. 150 x 12 (5) 5-22" RIV.

UPP. THIN DK FR. 180 x 9.5 B.P.

MAIN DECK PLATING:

STRINGER PLATE 1.800 x 11 FOR 4LR

8 INSIDE 11 AT ENDS

DECK PLATING 10 OUTSIDE LINE OF OP FOR 4LR

8 INSIDE 11 AT ENDS

WEB BEAM FITTED AT HATCH END

WEB PL 10 F.P. 150 x 12 (5) 5-22" RIV.

UPP. THIN DK FR. 180 x 9.5 B.P.

2ND DECK PLATING:

STRINGER & DECK PLATING

8 INSIDE 11 AT ENDS

WEB BEAM FITTED AT HATCH END

WEB PL 10 F.P. 150 x 12 (5) 5-22" RIV.

UPP. THIN DK FR. 230 x 11 B.P.

WEB BEAM FITTED AT HATCH END

WEB PL 10 F.P. 150 x 12 (5) 5-22" RIV.

UPP. THIN DK FR. 230 x 11 B.P.

WEB BEAM FITTED AT HATCH END

WEB PL 10 F.P. 150 x 12 (5) 5-22" RIV.

UPP. THIN DK FR. 230 x 11 B.P.

WEB BEAM FITTED AT HATCH END

WEB PL 10 F.P. 150 x 12 (5) 5-22" RIV.

UPP. THIN DK FR. 230 x 11 B.P.

WEB BEAM FITTED AT HATCH END

WEB PL 10 F.P. 150 x 12 (5) 5-22" RIV.

UPP. THIN DK FR. 230 x 11 B.P.

WEB BEAM FITTED AT HATCH END

WEB PL 10 F.P. 150 x 12 (5) 5-22" RIV.

UPP. THIN DK FR. 230 x 11 B.P.

WEB BEAM FITTED AT HATCH END

WEB PL 10 F.P. 150 x 12 (5) 5-22" RIV.

UPP. THIN DK FR. 230 x 11 B.P.

WEB BEAM FITTED AT HATCH END

WEB PL 10 F.P. 150 x 12 (5) 5-22" RIV.

UPP. THIN DK FR. 230 x 11 B.P.

WEB BEAM FITTED AT HATCH END

WEB PL 10 F.P. 150 x 12 (5) 5-22" RIV.

UPP. THIN DK FR. 230 x 11 B.P.

WEB BEAM FITTED AT HATCH END

WEB PL 10 F.P. 150 x 12 (5) 5-22" RIV.

UPP. THIN DK FR. 230 x 11 B.P.

WEB BEAM FITTED AT HATCH END

WEB PL 10 F.P. 150 x 12 (5) 5-22" RIV.

UPP. THIN DK FR. 230 x 11 B.P.

WEB BEAM FITTED AT HATCH END

WEB PL 10 F.P. 150 x 12 (5) 5-22" RIV.

UPP. THIN DK FR. 230 x 11 B.P.

WEB BEAM FITTED AT HATCH END

WEB PL 10 F.P. 150 x 12 (5) 5-22" RIV.

UPP. THIN DK FR. 230 x 11 B.P.

WEB BEAM FITTED AT HATCH END

WEB PL 10 F.P. 150 x 12 (5) 5-22" RIV.

UPP. THIN DK FR. 230 x 11 B.P.

WEB BEAM FITTED AT HATCH END

WEB PL 10 F.P. 150 x 12 (5) 5-22" RIV.

UPP. THIN DK FR. 230 x 11 B.P.

WEB BEAM FITTED AT HATCH END

WEB PL 10 F.P. 150 x 12 (5) 5-22" RIV.

UPP. THIN DK FR. 230 x 11 B.P.

WEB BEAM FITTED AT HATCH END

WEB PL 10 F.P. 150 x 12 (5) 5-22" RIV.

UPP. THIN DK FR. 230 x 11 B.P.

WEB BEAM FITTED AT HATCH END

WEB PL 10 F.P. 150 x 12 (5) 5-22" RIV.

UPP. THIN DK FR. 230 x 11 B.P.

WEB BEAM FITTED AT HATCH END

WEB PL 10 F.P. 150 x 12 (5) 5-22" RIV.

UPP. THIN DK FR. 230 x 11 B.P.

WEB BEAM FITTED AT HATCH END

WEB PL 10 F.P. 150 x 12 (5) 5-22" RIV.

UPP. THIN DK FR. 230 x 11 B.P.

WEB BEAM FITTED AT HATCH END

WEB PL 10 F.P. 150 x 12 (5) 5-22" RIV.

UPP. THIN DK FR. 230 x 11 B.P.

WEB BEAM FITTED AT HATCH END

WEB PL 10 F.P. 150 x 12 (5) 5-22" RIV.

UPP. THIN DK FR. 230 x 11 B.P.

WEB BEAM FITTED AT HATCH END

WEB PL 10 F.P. 150 x 12 (5) 5-22" RIV.

UPP. THIN DK FR. 230 x 11 B.P.

WEB BEAM FITTED AT HATCH END

WEB PL 10 F.P. 150 x 12 (5) 5-22" RIV.

UPP. THIN DK FR. 230 x 11 B.P.

WEB BEAM FITTED AT HATCH END

WEB PL 10 F.P. 150 x 12 (5) 5-22" RIV.

UPP. THIN DK FR. 230 x 11 B.P.

WEB BEAM FITTED AT HATCH END

WEB PL 10 F.P. 150 x 12 (5) 5-22" RIV.

UPP. THIN DK FR. 230 x 11 B.P.

WEB BEAM FITTED AT HATCH END

WEB PL 10 F.P. 150 x 12 (5) 5-22" RIV.

UPP. THIN DK FR. 230 x 11 B.P.

WEB BEAM FITTED AT HATCH END

WEB PL 10 F.P. 150 x 12 (5) 5-22" RIV.

UPP. THIN DK FR. 230 x 11 B.P.

WEB BEAM FITTED AT HATCH END

WEB PL 10 F.P. 150 x 12 (5) 5-22" RIV.

UPP. THIN DK FR. 230 x 11 B.P.

WEB BEAM FITTED AT HATCH END

WEB PL 10 F.P. 150 x 12 (5) 5-22" RIV.

UPP. THIN DK FR. 230 x 11 B.P.

WEB BEAM FITTED AT HATCH END

WEB PL 10 F.P. 150 x 12 (5) 5-22" RIV.

UPP. THIN DK FR. 230 x 11 B.P.

WEB BEAM FITTED AT HATCH END

WEB PL 10 F.P. 150 x 12 (5) 5-22" RIV.

UPP. THIN DK FR. 230 x 11 B.P.

WEB BEAM FITTED AT HATCH END

WEB PL 10 F.P. 150 x 12 (5) 5-22" RIV.

UPP. THIN DK FR. 230 x 11 B.P.

WEB BEAM FITTED AT HATCH END

WEB PL 10 F.P. 150 x 12 (5) 5-22" RIV.

UPP. THIN DK FR. 230 x 11 B.P.

WEB BEAM FITTED AT HATCH END

WEB PL 10 F.P. 150 x 12 (5) 5-22" RIV.

UPP. THIN DK FR. 230 x 11 B.P.

WEB BEAM FITTED AT HATCH END

WEB PL 10 F.P. 150 x 12 (5) 5-22" RIV.

UPP. THIN DK FR. 230 x 11 B.P.

WEB BEAM FITTED AT HATCH END

WEB PL 10 F.P. 150 x 12 (5) 5-22" RIV.

UPP. THIN DK FR. 230 x 11 B.P.

WEB BEAM FITTED AT HATCH END

WEB PL 10 F.P. 150 x 12 (5) 5-22" RIV.

UPP. THIN DK FR. 230 x 11 B.P.

WEB BEAM FITTED AT HATCH END

WEB PL 10 F.P. 150 x 12 (5) 5-22" RIV.

UPP. THIN DK FR. 230 x 11 B.P.

WEB BEAM FITTED AT HATCH END

WEB PL 10 F.P. 150 x 12 (5) 5-22" RIV.

UPP. THIN DK FR. 230 x 11 B.P.

WEB BEAM FITTED AT HATCH END

WEB PL 10 F.P. 150 x 12 (5) 5-22" RIV.

UPP. THIN DK FR. 230 x 11 B.P.

WEB BEAM FITTED AT HATCH END

WEB PL 10 F.P. 150 x 12 (5) 5-22" RIV.

UPP. THIN DK FR. 230 x 11 B.P.

WEB BEAM FITTED AT HATCH END

WEB PL 10 F.P. 150 x 12 (5) 5-22" RIV.

UPP. THIN DK FR. 230 x 11 B.P.

WEB BEAM FITTED AT HATCH END

WEB PL 10 F.P. 150 x 12 (5) 5-22" RIV.

UPP. THIN DK FR. 230 x 11 B.P.

WEB BEAM FITTED AT HATCH END

WEB PL 10 F.P. 150 x 12 (5) 5-22" RIV.

UPP. THIN DK FR. 230 x 11 B.P.

WEB BEAM FITTED AT HATCH END

WEB PL 10 F.P. 150 x 12 (5) 5-22" RIV.

UPP. THIN DK FR. 230 x 11 B.P.

WEB BEAM FITTED AT HATCH END

WEB PL 10 F.P. 150 x 12 (5) 5-22" RIV.

UPP. THIN DK FR. 230 x 11 B.P.

WEB BEAM FITTED AT HATCH END

WEB PL 10 F.P. 150 x 12 (5) 5-22" RIV.

UPP. THIN DK FR. 230 x 11 B.P.

WEB BEAM FITTED AT HATCH END

WEB PL 10 F.P. 150 x 12 (5) 5-22" RIV.

UPP. THIN DK FR. 230 x 11 B.P.

WEB BEAM FITTED AT HATCH END

WEB PL 10 F.P. 150 x 12 (5) 5-22" RIV.

UPP. THIN DK FR. 230 x 11 B.P.

WEB BEAM FITTED AT HATCH END

WEB PL 10 F.P. 150 x 12 (5) 5-22" RIV.

UPP. THIN DK FR. 230 x 11 B.P.

WEB BEAM FITTED AT HATCH END

WEB PL 10 F.P. 150 x 12 (5) 5-22" RIV.

UPP. THIN DK FR. 230 x 11 B.P.

WEB BEAM FITTED AT HATCH END

WEB PL 10 F.P. 150 x 12 (5) 5-22" RIV.

UPP. THIN DK FR. 230 x 11 B.P.

WEB BEAM FITTED AT HATCH END

WEB PL 10 F.P. 150 x 12 (5) 5-22" RIV.

UPP. THIN DK FR. 230 x 11 B.P.

WEB BEAM FITTED AT HATCH END

WEB PL 10 F.P. 150 x 12 (5) 5-22" RIV.

UPP. THIN DK FR. 230 x 11 B.P.

WEB BEAM FITTED AT HATCH END



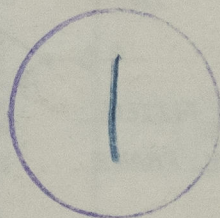
'MIKAGESAN MARU'



Midship Section

KOBE RPT. NO. **3856**  
DATED. \_\_\_\_\_

RECORDS DEPT.  
LONDON.



© 2021

Lloyd's Register  
Foundation

011378-011385-0094