

Nº 680

# PLAN OF RUDDERS & POSTS AT 9'-0" EACH SIDE CR LINE

SCALE 1 INCH=ONE FOOT.

DETAILS. SCALE AS SHOWN.

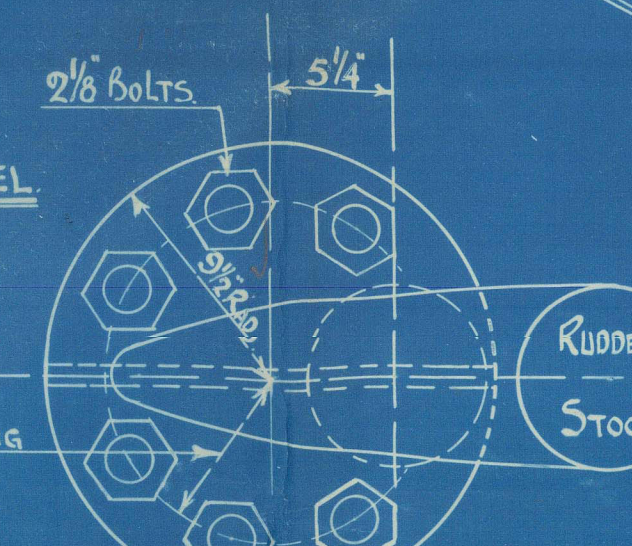
RUDDER POSTS TO BE OF CAST STEEL.

RUDDER ARMS & STOCK OF BEST FORGED SCRAP STEEL.

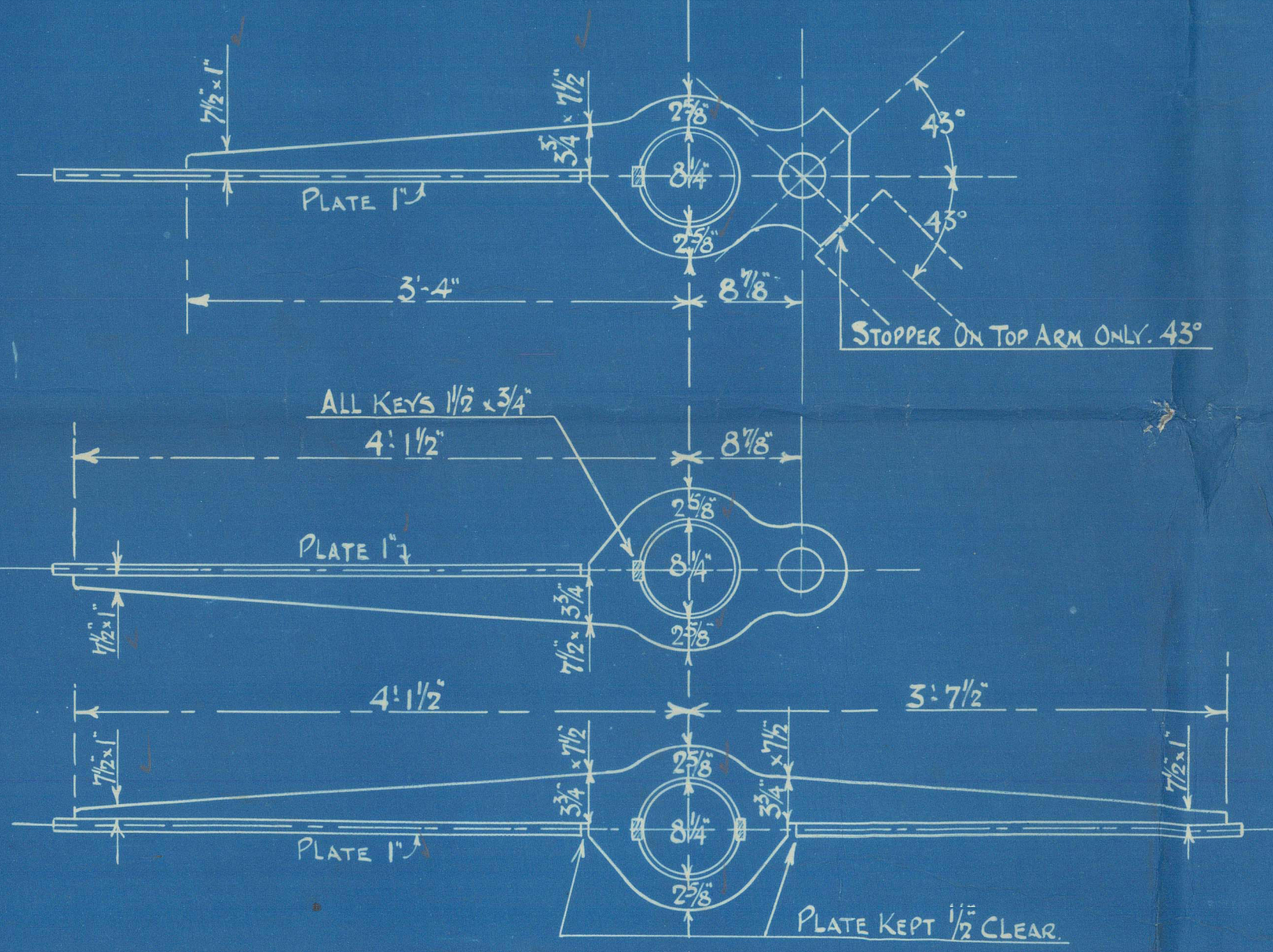
IMMERSED AREA OF RUDDER 50 SQ. FT.

CG. OF ENTIRE RUDDER 1'-8" AHEAD OF PINTLES.

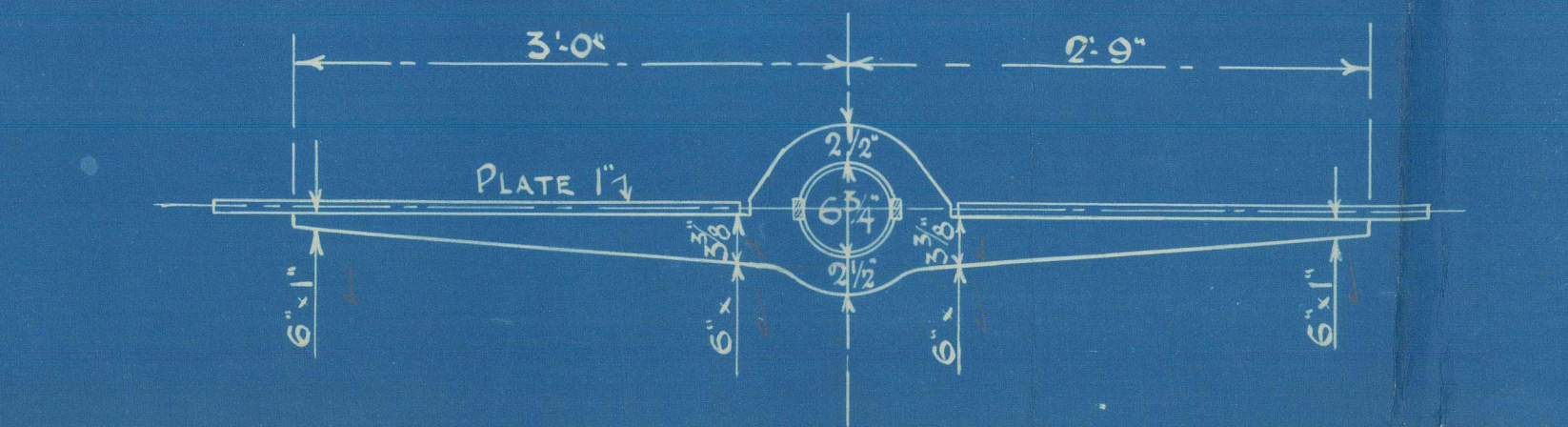
SPEED OF VESSEL 10 KNOTS.



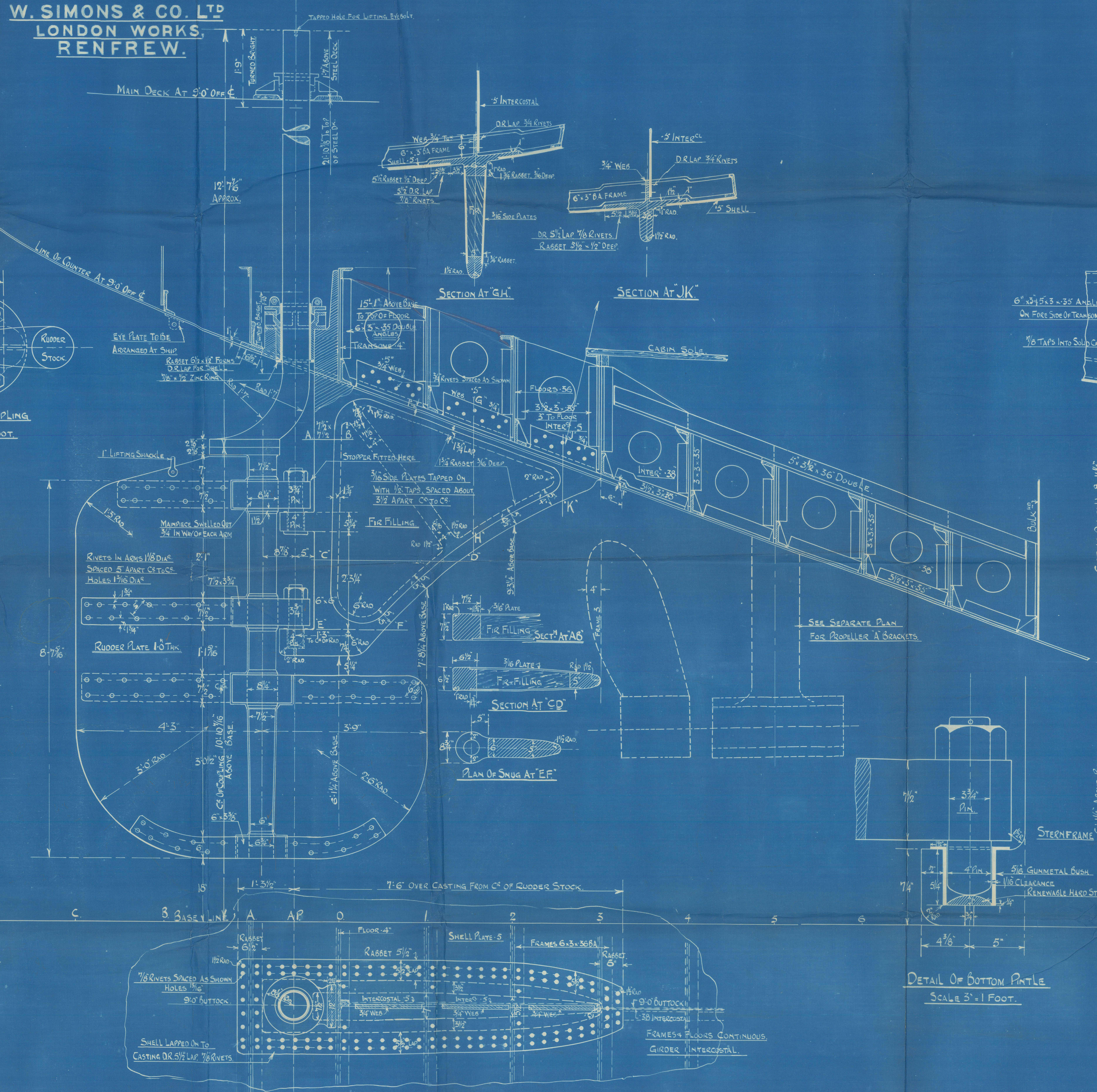
PLAN OF COUPLING  
SCALE 1 1/2" = 1 FOOT.



NOTE: ARMS TO BE SHUNK UPON & KEYED TO MAINPIECE.  
MAINPIECE TO BE INCREASED 10% IN DIA. IN WAY OF  
EACH ARM TO ADMIT OF AN EFFICIENT KEYWAY BEING CUT.



W. SIMONS & CO. LTD  
LONDON WORKS,  
RENFREW.



SECTION AT 'GH'

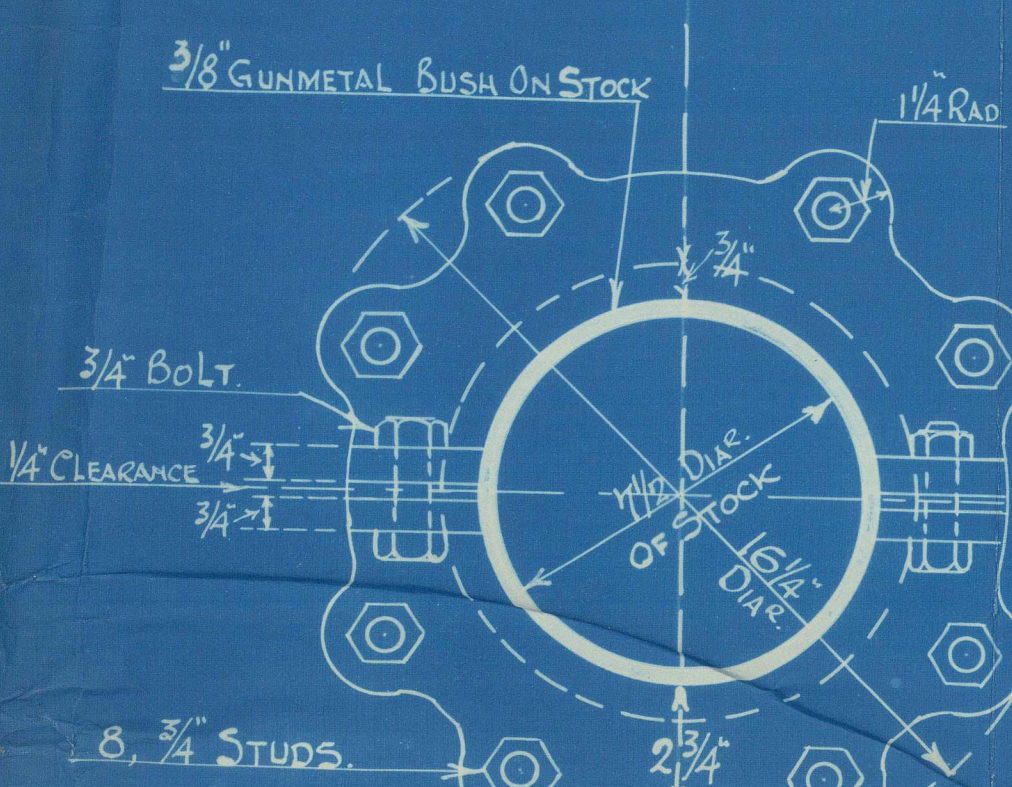
SECTION AT 'JK'

SECTION AT 'CD'

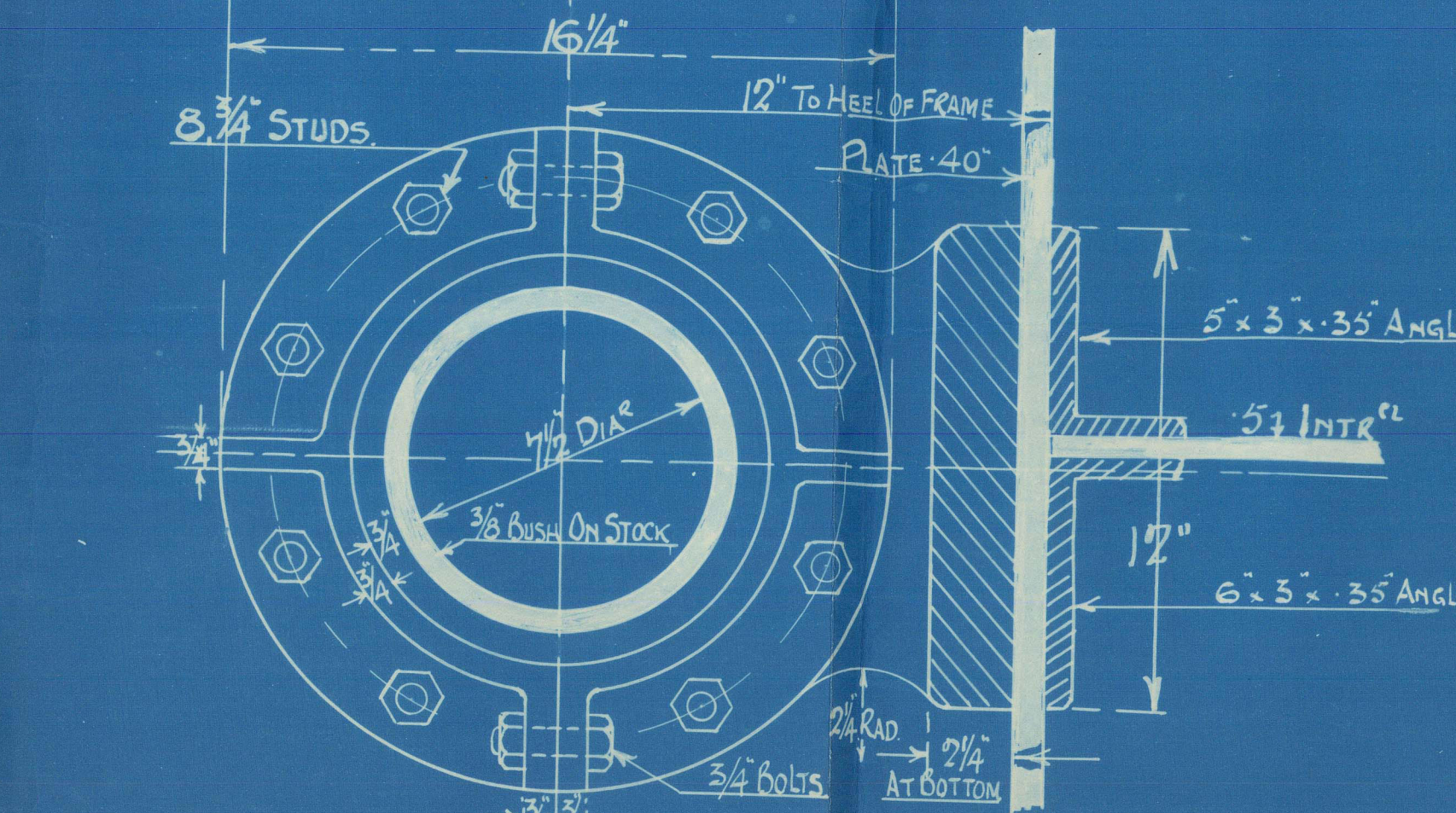
PLAN OF SHUG AT 'EF'

SECTION AT AFT PERP  
LOOKING FORWARD  
SCALE 1" = 1 FOOT.

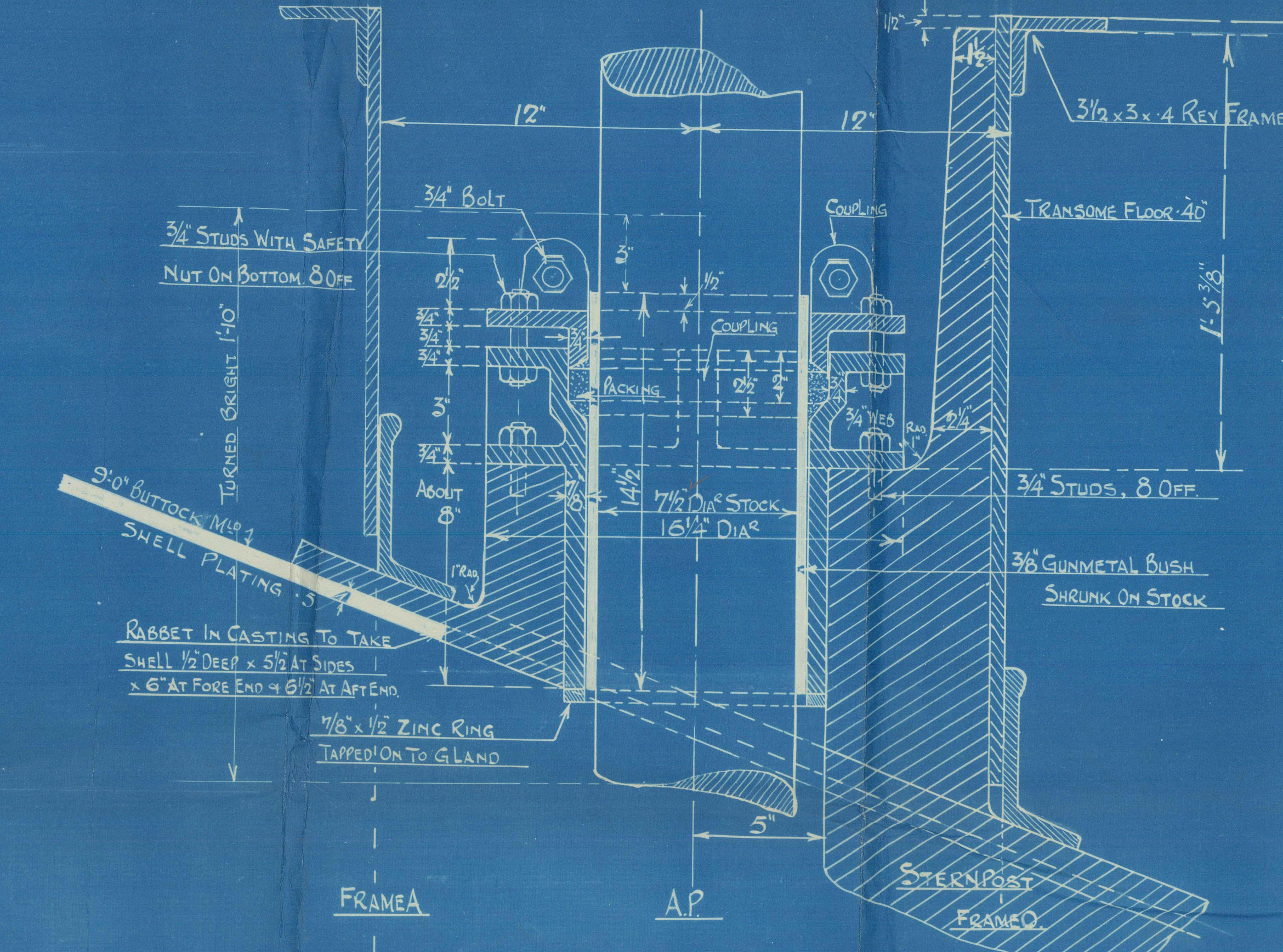
DETAIL OF BOTTOM PINTLE  
SCALE 3" = 1 FOOT.



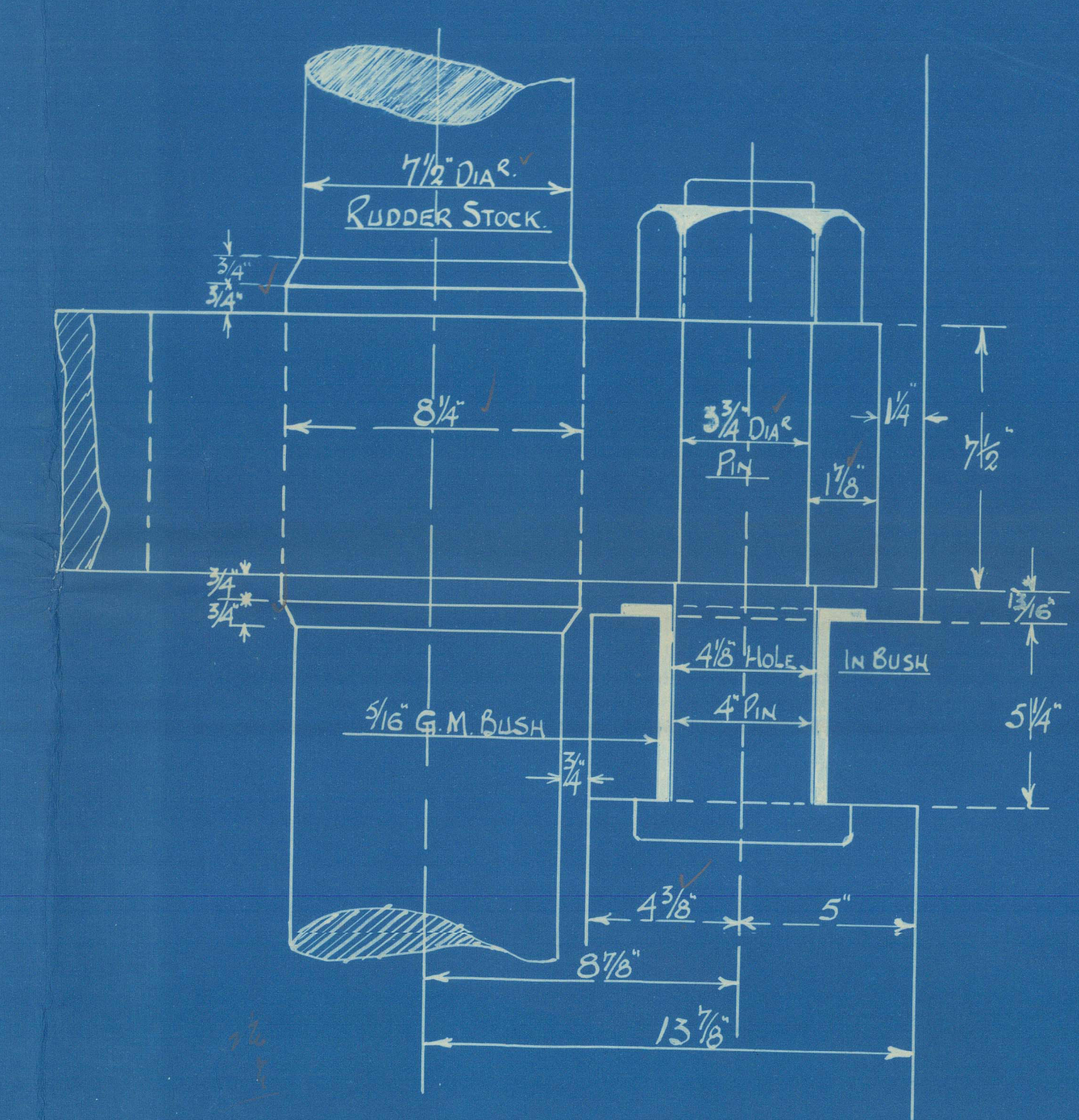
PLAN OF TOP PART OF RUDDER STUFFING GLAND  
SCALE 3" = 1 FOOT.



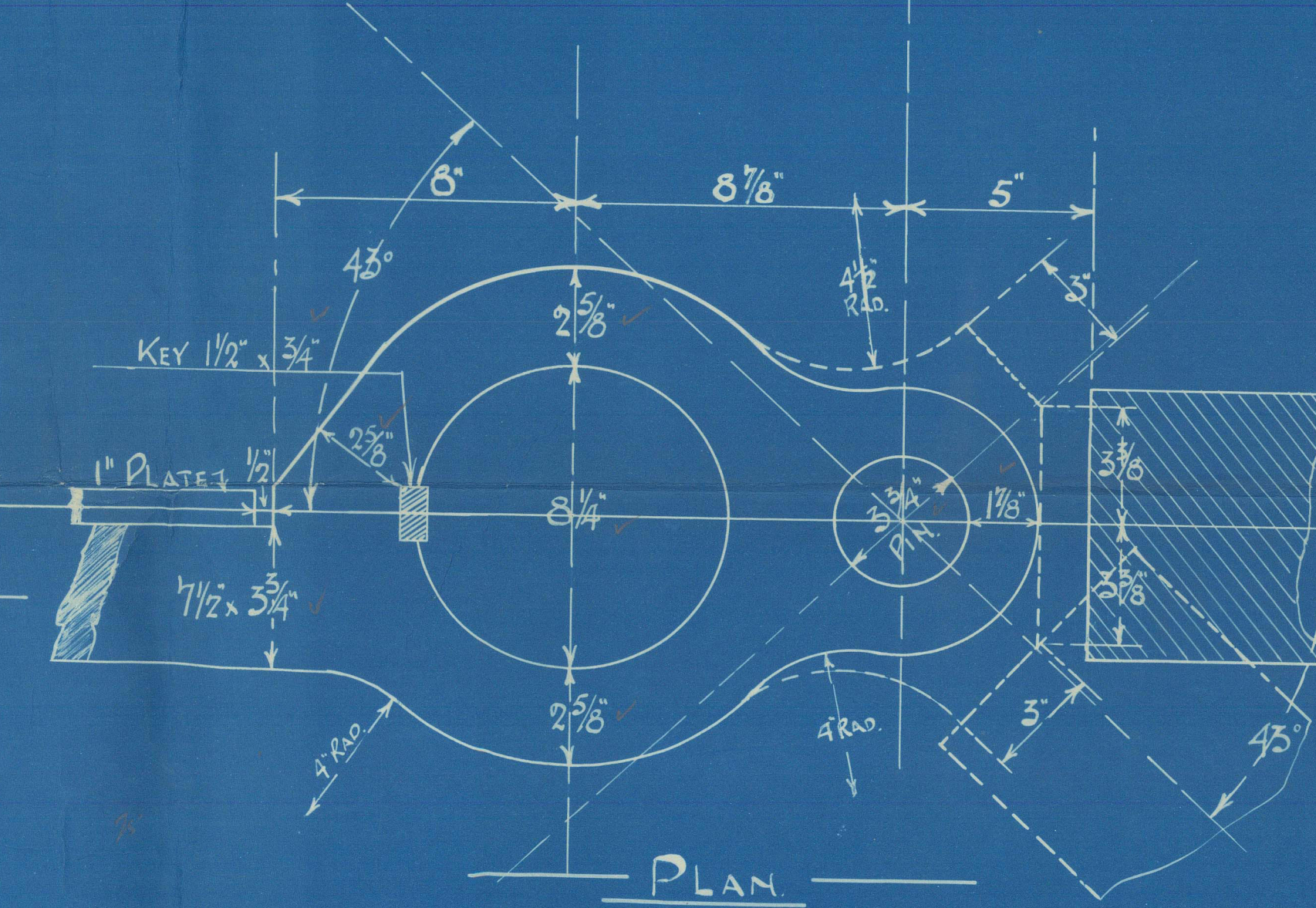
PLAN OF BOTTOM FLANGE  
OF RUDDER STUFFING GLAND



SECTION THRO' R. T. GLAND, GUNMETAL.  
SCALE 3" = 1 FOOT.



ELEVATION



PLAN

DETAIL OF PINTLE & GUDGEON  
STOPPER FITTED ONLY ON TOP ARM I  
SCALE 3" = 1 FOOT.

APPROVED  
LLOYD'S REGISTER OF SHIPPING  
9-11-25



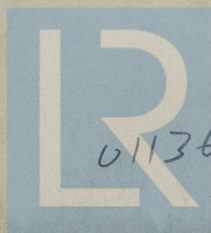
W. SIMONS & Co Ltd

RUBBER S

No 680

" VIZAGAPATAM "

GLASGOW REPORT No. 46144



© 2021

011368-00377-0073  
Lloyd's Register  
Foundation



Lloyds  
0073



© 2021

Lloyd's Register  
Foundation