

NO 115 SHIP.

# STERN & RUDDER FRAMES.

STERN FRAME - FORGING STEEL  
TO CLASS 100 A - GREAT LAKES. Carrying Petroleum in Bulk

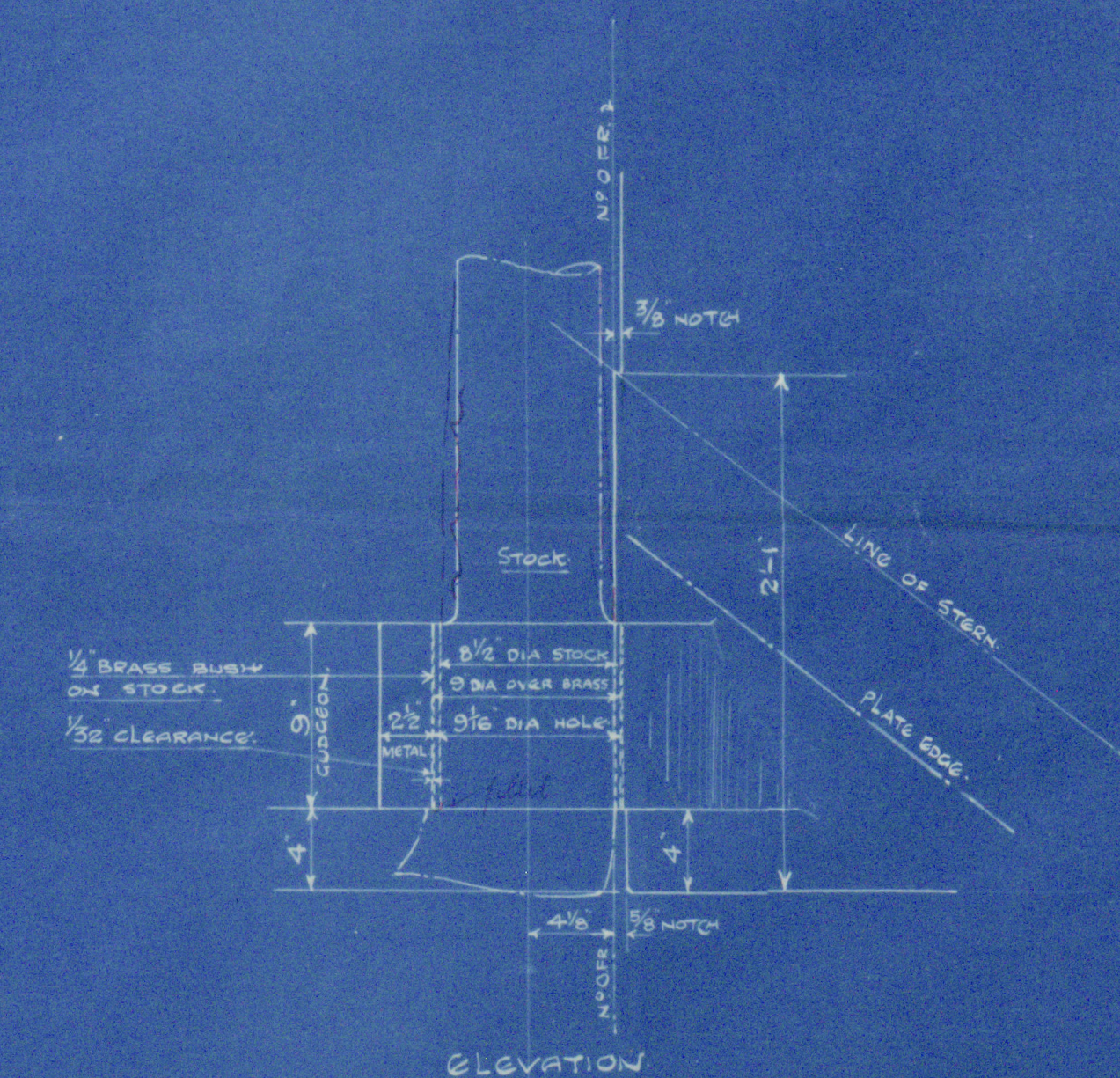
SCARPH TO BE MACHINED & TO BE A GOOD FIT.  
ALL MACHINING & DRILLING TO BE DONE BY MAKERS.  
NO SHARP EDGES ON FORGING WHERE EXPOSED, CORNERS TO BE ROUNDED OFF.

RUDDER FRAME - SEMI-BALANCED TYPE

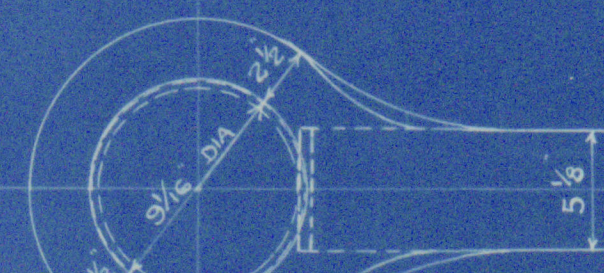
STOCK OF FORGED STEEL FRAME OF CAST OR FORGED STEEL  
TO CLASS 100 A - GREAT LAKES.

STOCK & MAINPIECES TO BE COUPLED TOGETHER WITH  
COUPLING, TO BE MACHINED & TO BE A GOOD FIT.  
ALL MACHINING & DRILLING TO BE DONE BY MAKERS.  
RUDDER TO BE FILLED IN WITH WHITE PINE BETWEEN THE ARMS

ALL TO BE MADE TO LLOYDS REQUIREMENTS & TO BE INSPECTED & PASSED BY THEIR  
SURVEYOR BEFORE LEAVING MAKERS WORKS.  
DIMENSIONS SHOULD BE CAREFULLY WORKED TO AS WE ONLY PAY ON WEIGHTS CALCULATED  
TO THESE DIMENSIONS.  
ANY ALTERATION TO BE NOTIFIED TO THE FURNESS SHIPBUILDING CO LTD.  
WRITTEN DIMENSIONS ONLY TO BE TAKEN.

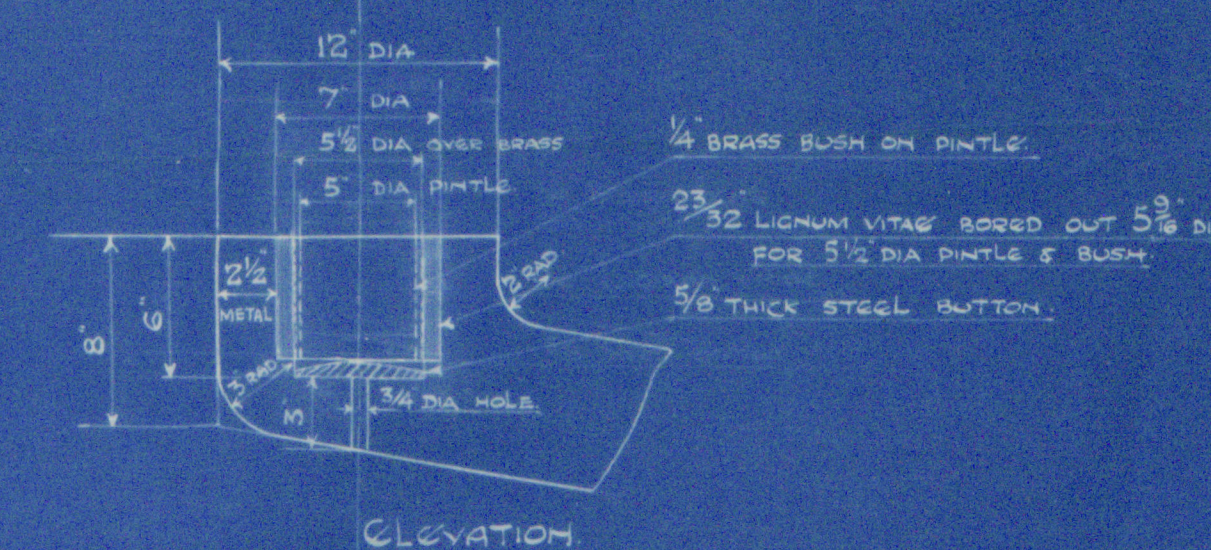


ELEVATION

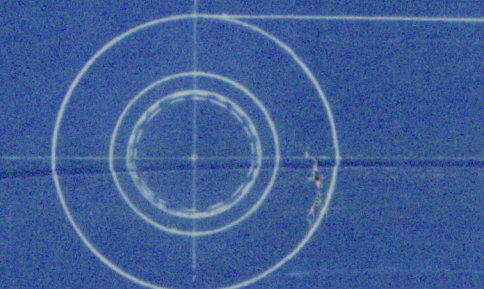


PLAN VIEW

DETAIL OF TOP GUDGEON  
SCALE 1 1/2" = 1 FT.

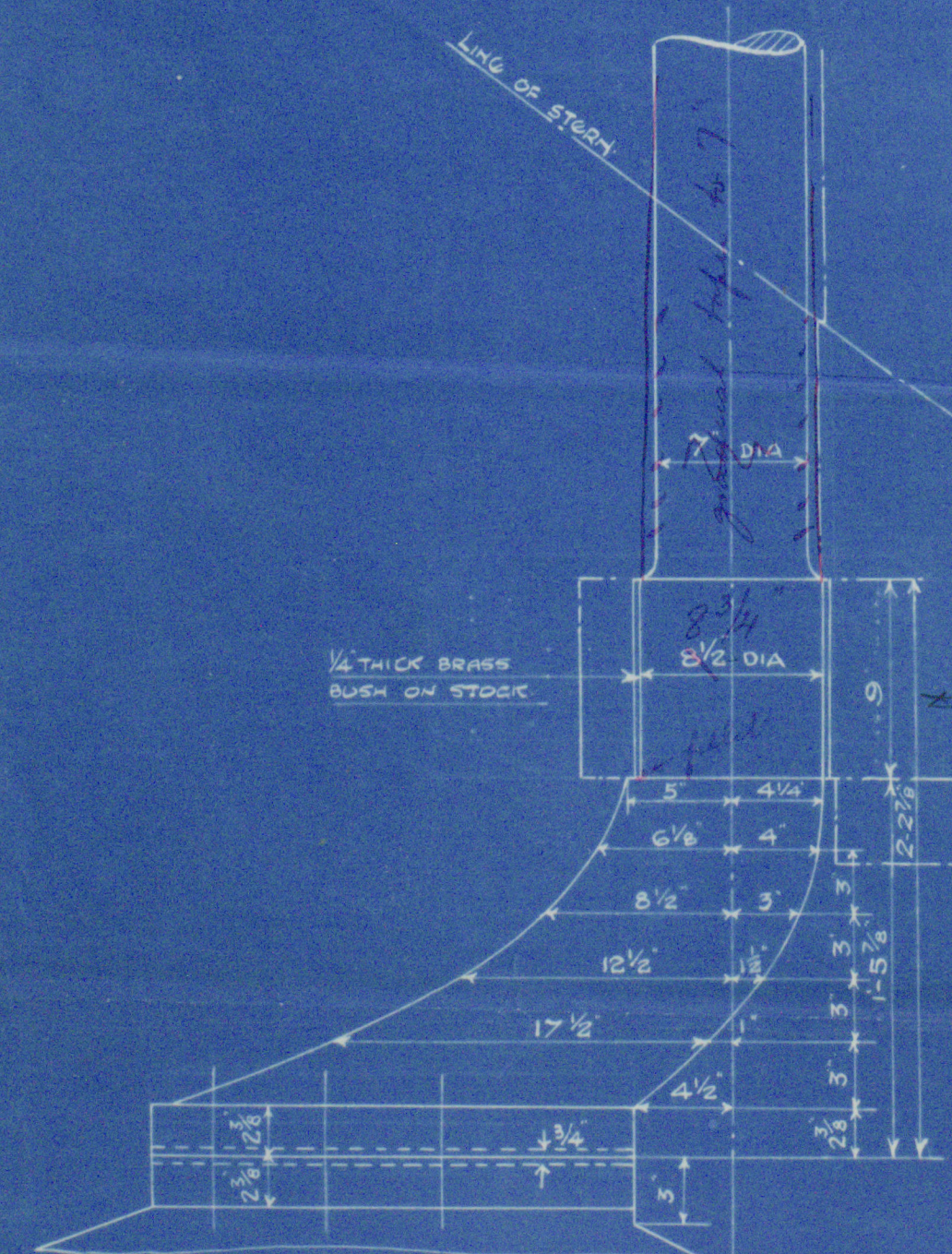


ELEVATION

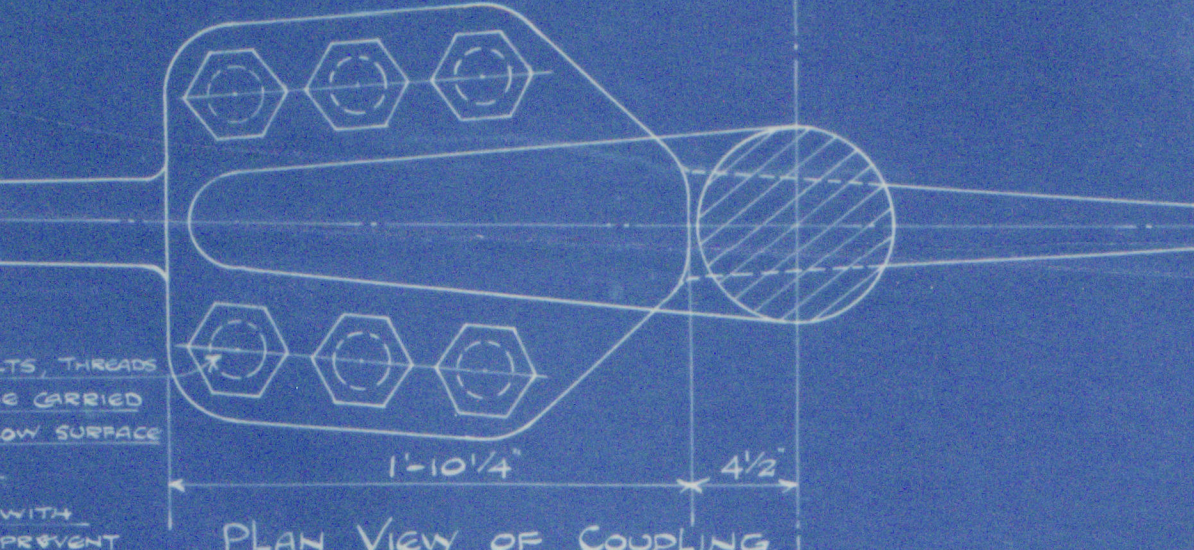


PLAN VIEW

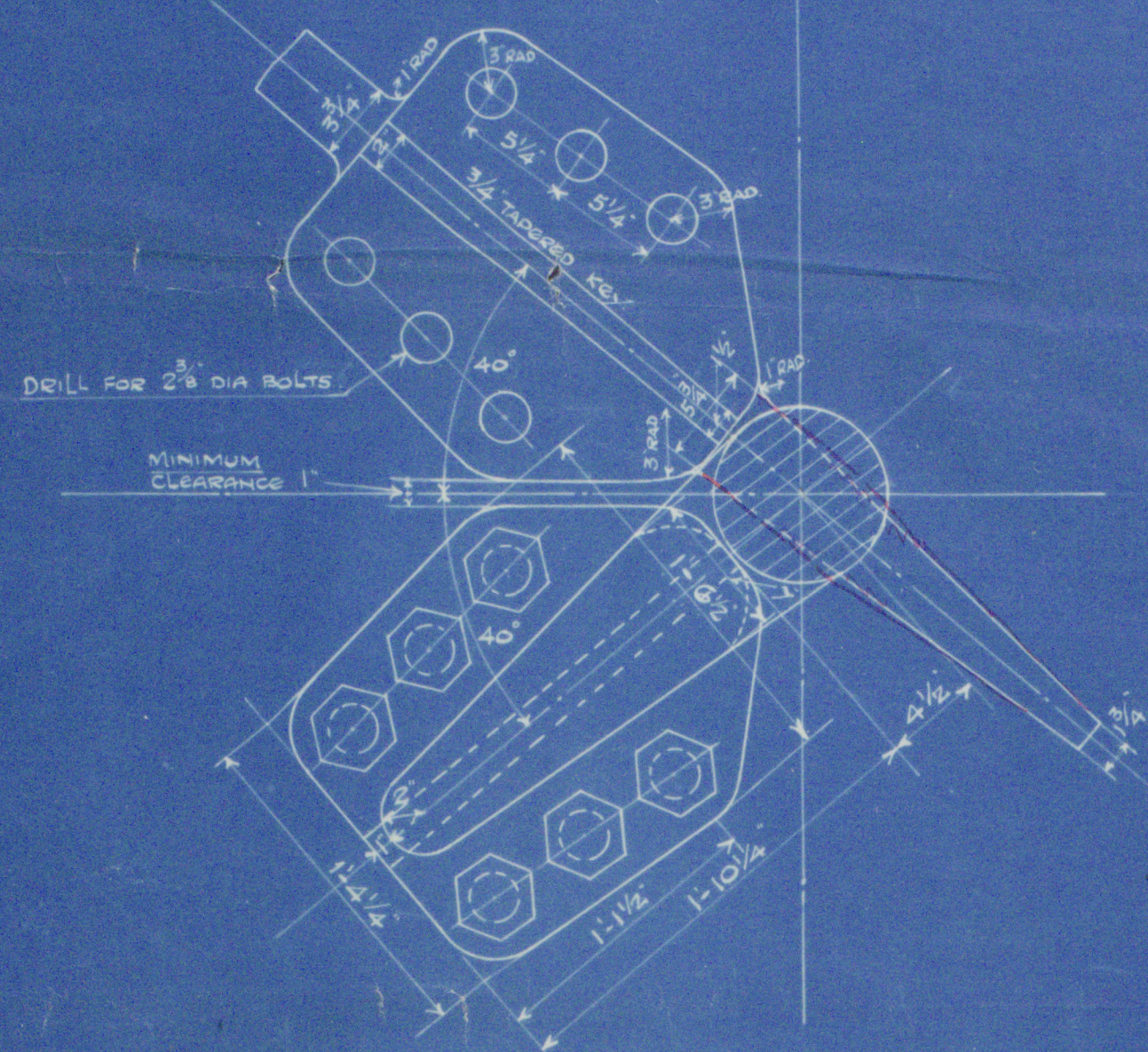
DETAIL OF BOTTOM GUDGEON  
SCALE 1 1/2" = 1 FT.



ELEVATION OF COUPLING ETC

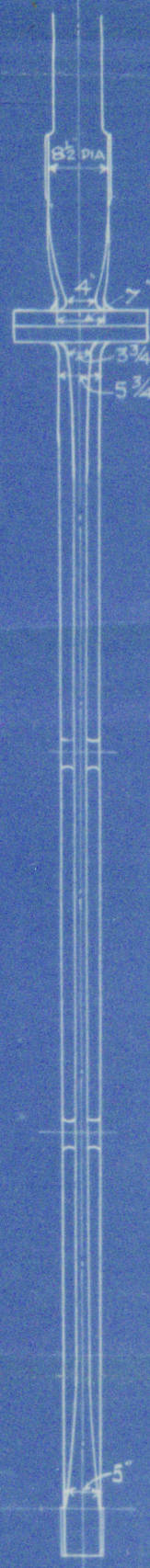
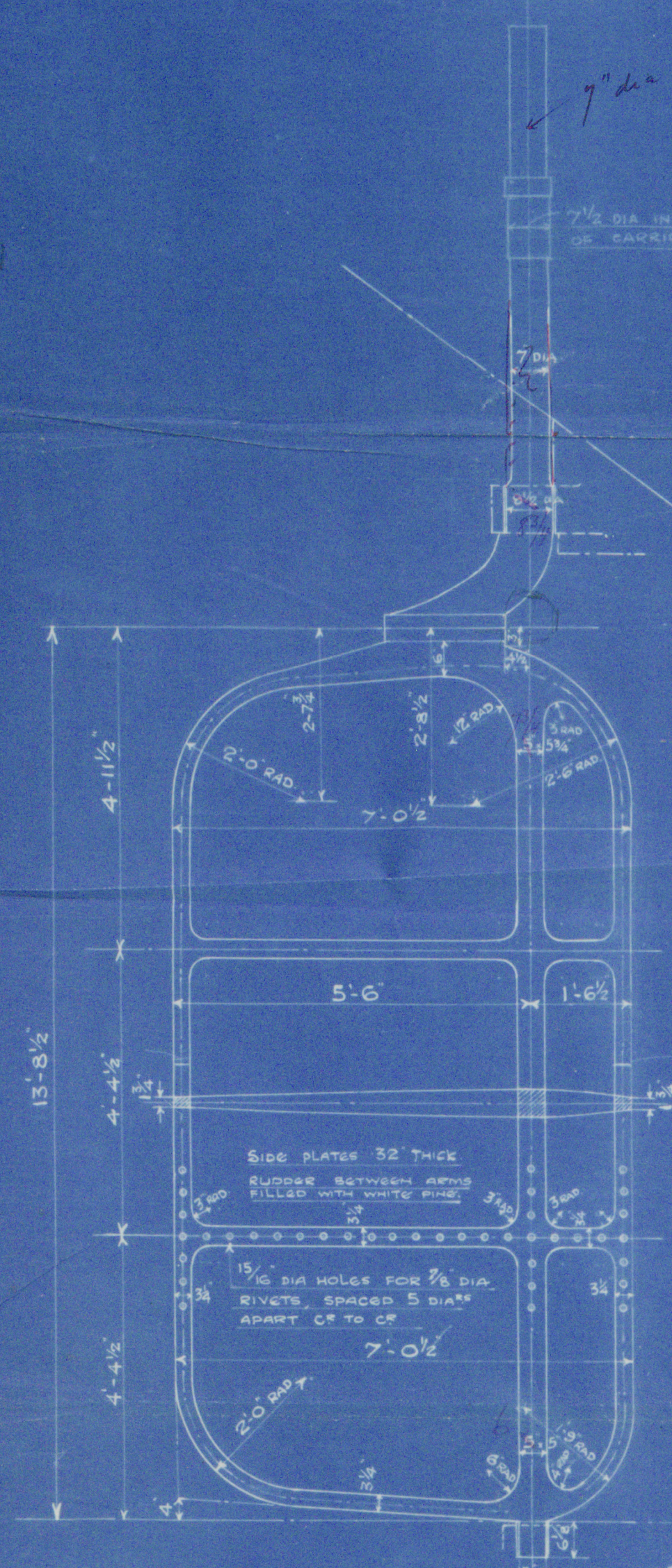


PLAN VIEW OF COUPLING

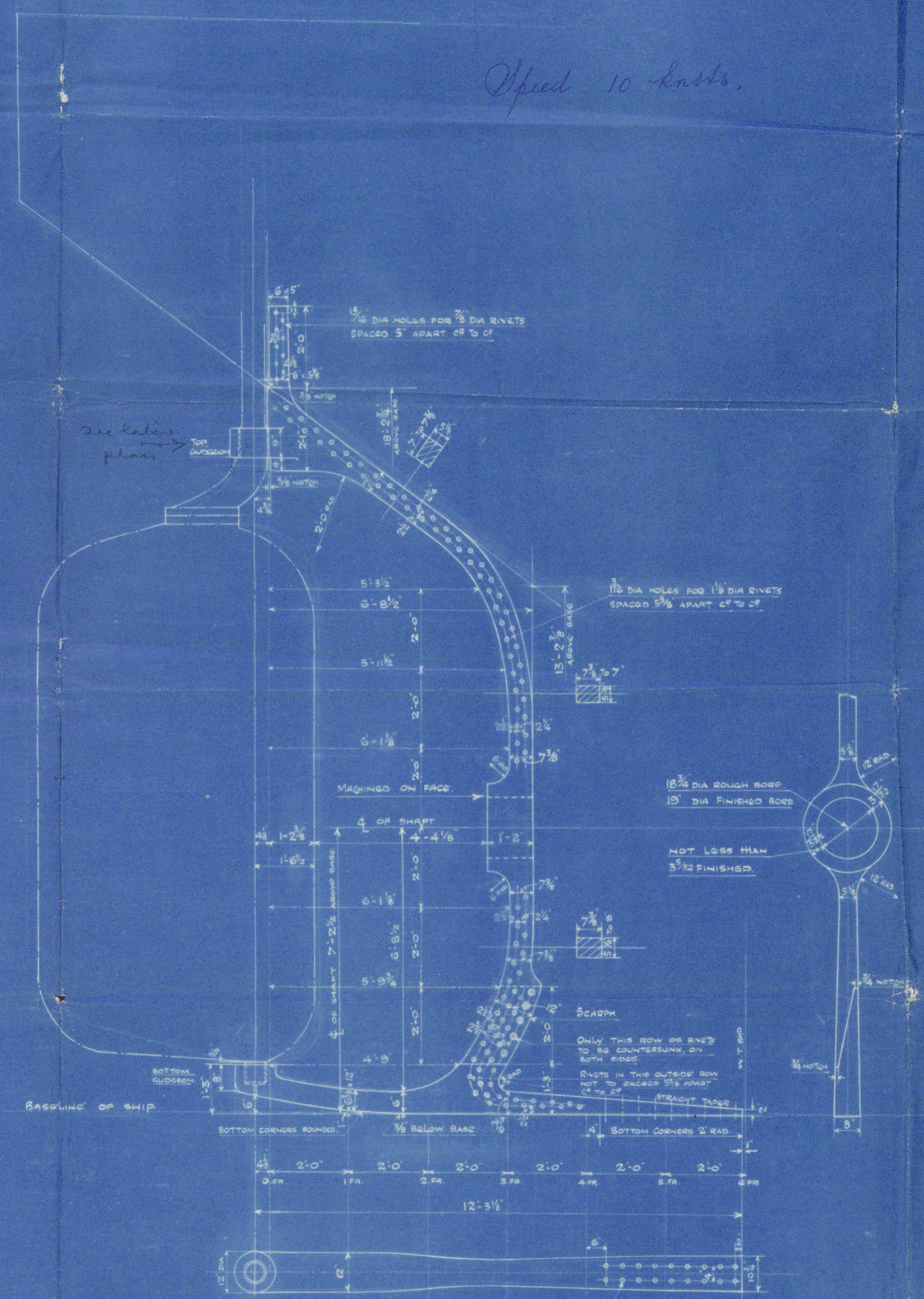


PLAN VIEW OF COUPLING SHOWING  
CLEARANCE WHEN OPENED OUT

SCALE 1 1/2" = 1 FT.



STOCK TO HAVE STRAIGHT TAPER FROM 5/8" AT TOP TO 5/8" AT BOTTOM.



SCALE 1 1/2" = 1 FT.

5.00  
18888  
27-10-26

NO 5.792.

25-10-26



Jurgen S B 6° N° 115, 145

4/1709171

STERNFRAME • RUDDER •

and Nos. 199/200 (28.1.31)

WINDSO LITE  
12909

MDB. RPT. No.

S.S. Britamolare  
MDB. RPT. No. 14417

S.S. John Swin  
MDB. RPT. No. 13952  
13632

S.S. Simcolite  
MDB. RPT. No. 14039

S.S. Britamoil  
MDB. RPT. No. 14414