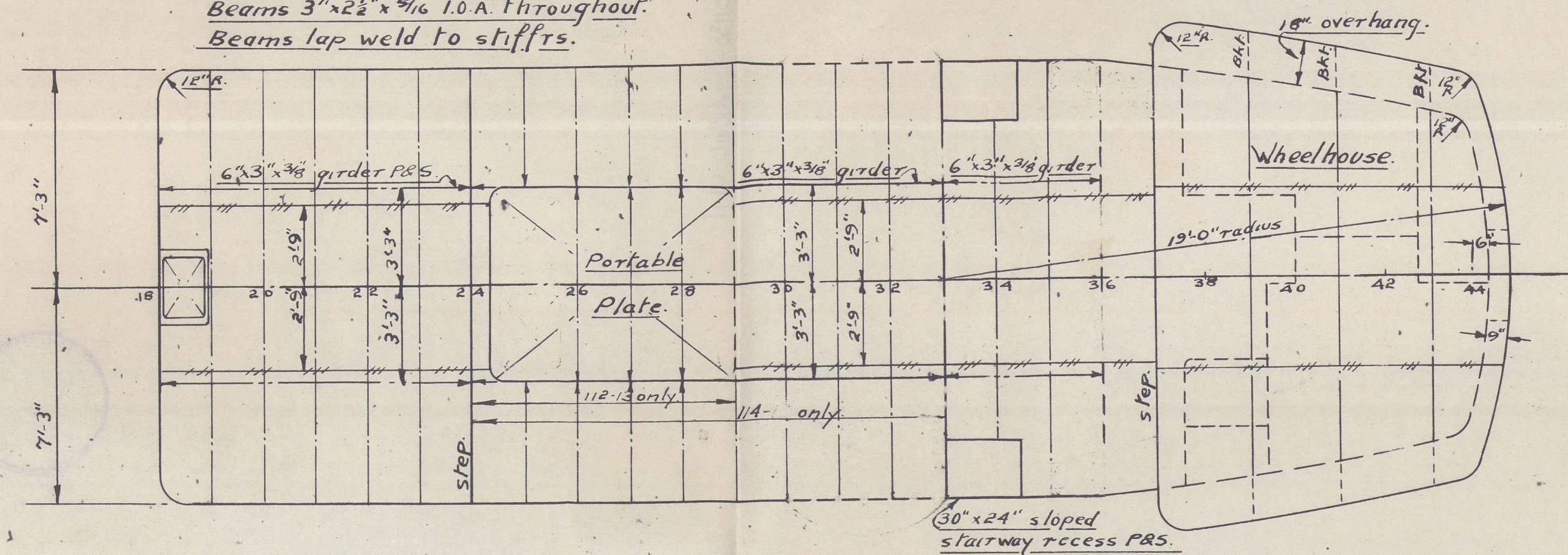


STRANTON
TWIN SCREW DIESEL TUG. YARD No: 124.
STRUCTURAL PROFILE & DECKS. (AS FITTED.)
SCALE: - 1/4" TO 1'-0"



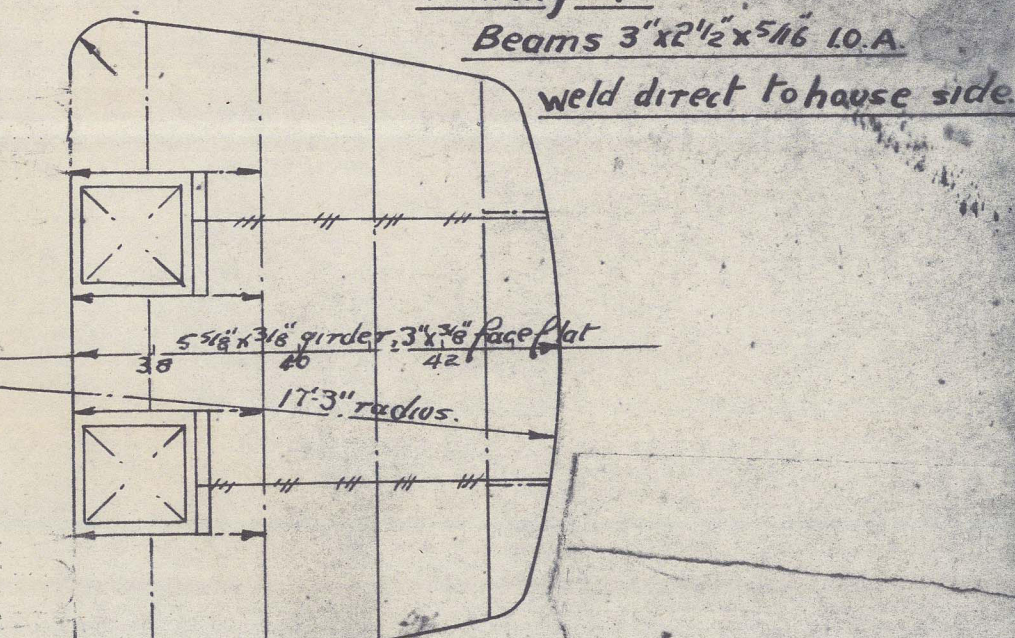
"This drawing is the property of SEAWORK LIMITED and must not be copied or used for any purpose without their written consent."

Boat deck plating & casing top 1/4" plating.
 Deck compo. on open deck
 Beams 3"x2 1/2"x 3/16" I.O.A. throughout.
 Beams lap weld to stiffers.

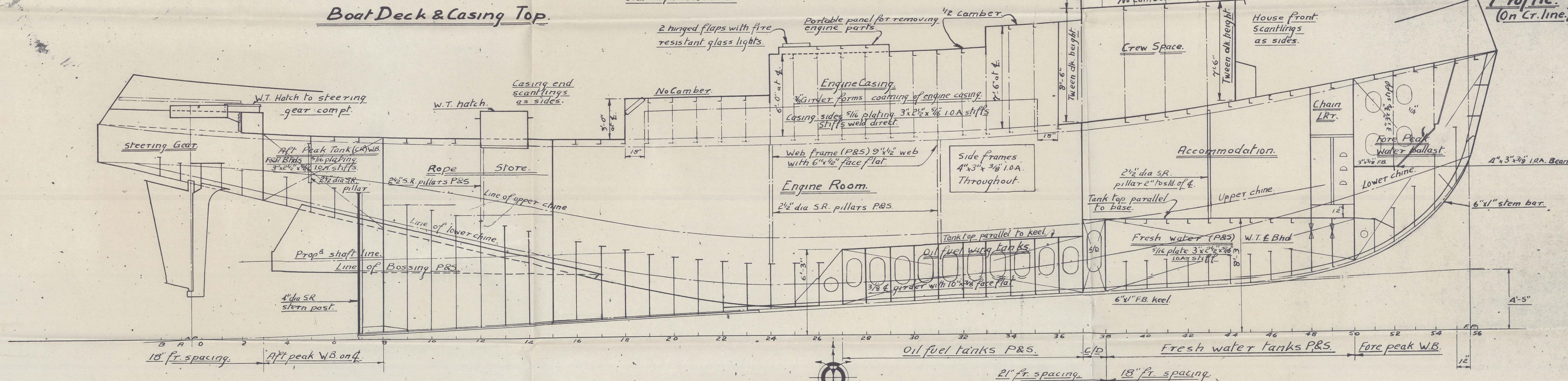


Boat Deck & Casing Top.

Wheelhouse Top.
 Plating 1/4"
 Beams 3"x2 1/2"x 3/16" I.O.A.
 weld direct to house side



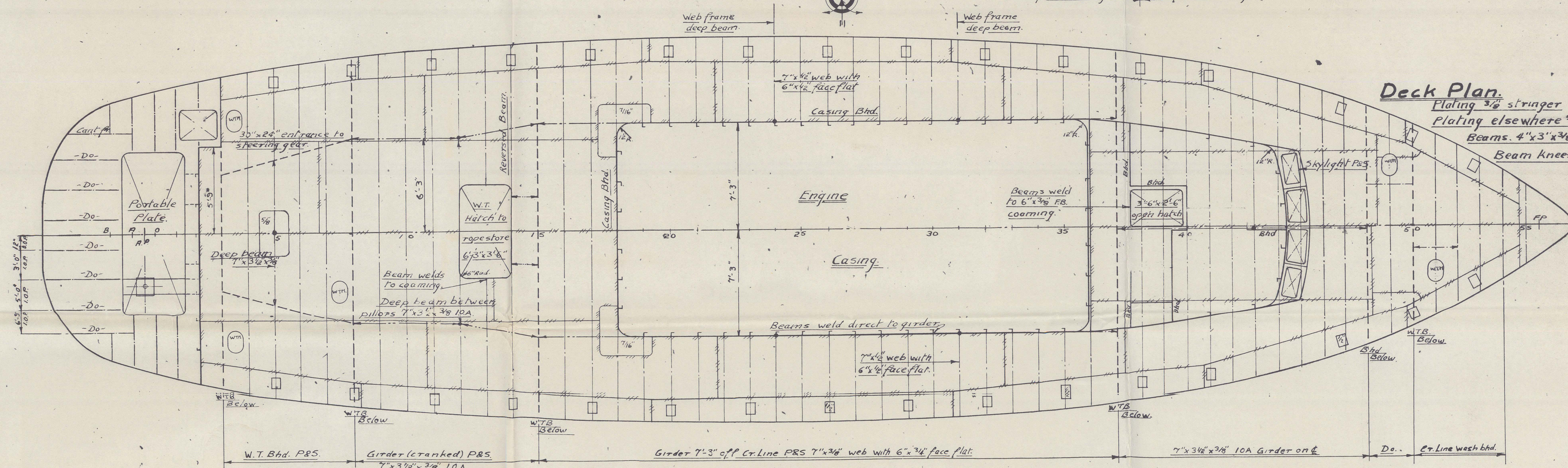
Profile.
 (On Cr. line.)



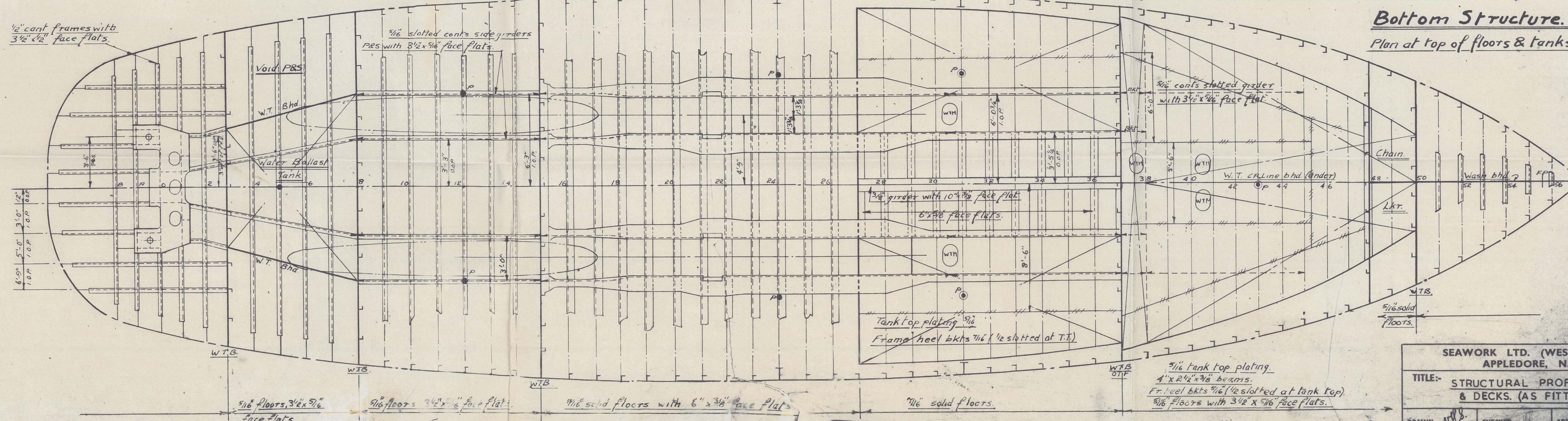
W.T. Bhd. Scantlings.		
Item.		Size.
W.T. Bhd. 3	Plating	5/16"
" "	" (bottom stroke)	7/16"
" "	stiffers	3"x2 1/2"x 3/16"
" "	8 plating	7/16"
" "	" (bottom stroke)	7/16"
" "	stiffers	3"x2 1/2"x 3/16"
" "	15 plating	7/16"
" "	" (bottom stroke)	7/16"
" "	stiffers	3"x2 1/2"x 3/16"
" "	37 plating	7/16"
" "	" (bottom stroke)	7/16"
" "	stiffers	3"x2 1/2"x 3/16"
" "	50 plating	7/16"
" "	" (bottom stroke)	7/16"
" "	stiffers	3"x2 1/2"x 3/16"

Length B.P. 93'-0"
 Breadth mld. 25'-9 1/8"
 Depth mld. 11'-9"
 Draft mld. 9'-4 1/8"
 Draft aft. 11'-7 1/8"
 Rake of keel. 4'-5"
 Camber (straight line) 7" in 25'-9 1/8"
 To Lloyds 100A1 whilst engaged on U.K. coasting service.

Deck Plan.
 Plating 3/8" stringer
 Plating elsewhere 1/2"
 Beams 4"x3"x 3/8" I.O.A. throughout.
 Beam knees 15"x15"x 3/8"



Bottom Structure.
 Plan at top of floors & tanks.



SEAWORK LTD. (WESTERN DIVISION)
 APPLIEDORE, N. DEVON.
 TITLE: STRUCTURAL PROFILE & DECKS. (AS FITTED)
 DRAWN: J.S.B. CHECKED: J.S.B. APPROVED: J.S.B.
 DRG. No.: A1
 YARD No.: 124

011330-01340-071

ms. "STRANTON"

P.R. Harris & Sons Ltd. No 124

Profile & deeds. (as above.)

Falmouth report N^o 13667.

RECORDS DEPT.
LONDON.

2

ste

© 2021

Lloyd's Register
Foundation

011330 - 011340 - 0171