

31.10.32.
LLOYDS NUMERALS
 $L \times D = 180 \times 13.5 = 2430$
 $L \times (B+D) = 180 \times (35+13.5) = 8730$
 $L/D = 180/13.5 = 13.33$

== TWIN SCREW BUNKERING STEAMER ==
 DIMENSIONS :- LENGTH BP 180'-0" BREADTH MLD 35'-0" DEPTH MLD 13'-6"

ASTILLEROS BARRERAS			
CONSTRUCCION N° 520		DISEÑO N° 1	
PLANO N° 2100-34		Cuaderno maestro	
Escala 1:25		PROYECTADO	REVISADO
FOLIO 4-10-38			

== MIDSHIP SECTION & OILTIGHT TRANSVERSE BULKHEAD ==

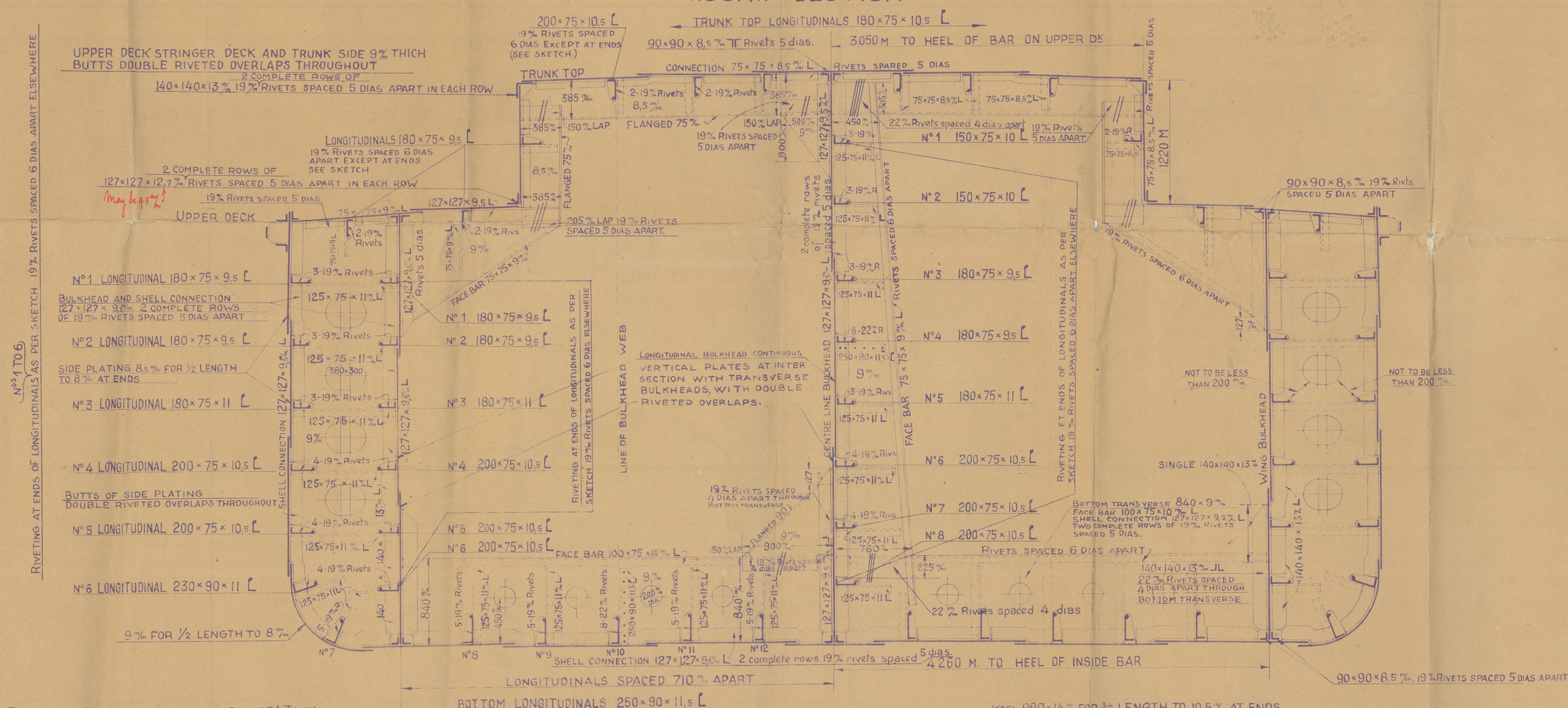
SCALE 1/25
 THE "BRACKETLESS SYSTEM" (PATENT)
 TO CLASS LLOYDS + 100 AL CARRING PETROLEUM IN BULK
 NOTATION "LONGITUDINAL FRAMING" "BRACKETLESS SYSTEM"
 EQUIPMENT TO RULE

NOTE: ALL BULB ANGLES ARE LATEST GERMAN STANDARD SECTIONS

TEST HEAD = 1525 M ABOVE TRUNK TOP.

TRUNK TOP LONGITUDINALS 200x75x10.5 19% RIVETS SPACED 6 DIAS APART EXCEPT AT ENDS (SEE SKETCH)
 TRUNK TOP PLATING 8.5% THICK BUTTS DOUBLE RIVETED OVERLAPS

MIDSHIP SECTION



RIVETING IN BOTTOM LONGITUDINALS IN N°1 TANK
 RIVETING OF BOTTOM LONGITUDINALS AT ENDS AS PER SKETCH
 RIVETS ELSEWHERE 19% DIAM. SPACED 4 1/2 DIAS APART.

BOTTOM LONGITUDINALS 250x90x11.5 L
 RIVETING AT ENDS OF LONGITUDINALS AS PER SKETCH, RIVETING ELSEWHERE
 19% RIVETS SPACED 4 1/2 DIAS FOR 9 RIVETS EACH SIDE OF TRANSVERSES
 6 DIAS APART ELSEWHERE
 BOTTOM PLATING 9% FOR 1/2 LENGTH TO 8% AT ENDS
 BUTTS OF BOTTOM PLATING DOUBLE RIVETED
 OVERLAPS THROUGHOUT.

NOTE: INNER EDGE OF BUTTS OF SHELL PLATING
 TO BE KEPT AS FAR AWAY FROM TRANSVERSE
 BULKHEADS AS POSSIBLE

KEEL 990x14% FOR 3/5 LENGTH TO 10.5% AT ENDS
 KEEL ANGLES 90x90x9.5% RIVETS SPACED 5 DIAS APART
 BUTTS OF KEEL TREBLE RIVETED OVERLAPS THROUGHOUT

MODIFICATION TO
 ISHERWOOD'S PLAN N° 9548

LONGITUDINALS N° 6 TO 12 INCLUSIVE
 ELECTRIC WELDED AT ENDS. — SEE SKETCH.

7
Barreras

Midship Section

"Campalans"



© 2021

Lloyd's Register
Foundation

011294-011303-0137