

PRINCIPAL DIMENSIONS.

LENGTH OVER ALL	105'-0"	32.00 M.
LENGTH BETW. PP. (L)	100'-0"	30.48 M.
BREADTH MLD. (B)	24'-0"	7.32 M.
DEPTH MLD. (D)	7'-6"	2.29 M.
FIRST LONGITUDINAL NUMBER	750.	
SECOND	3150.	
$\frac{L}{B} = 13.3.$		
$\frac{L}{D} = 6.6.$		

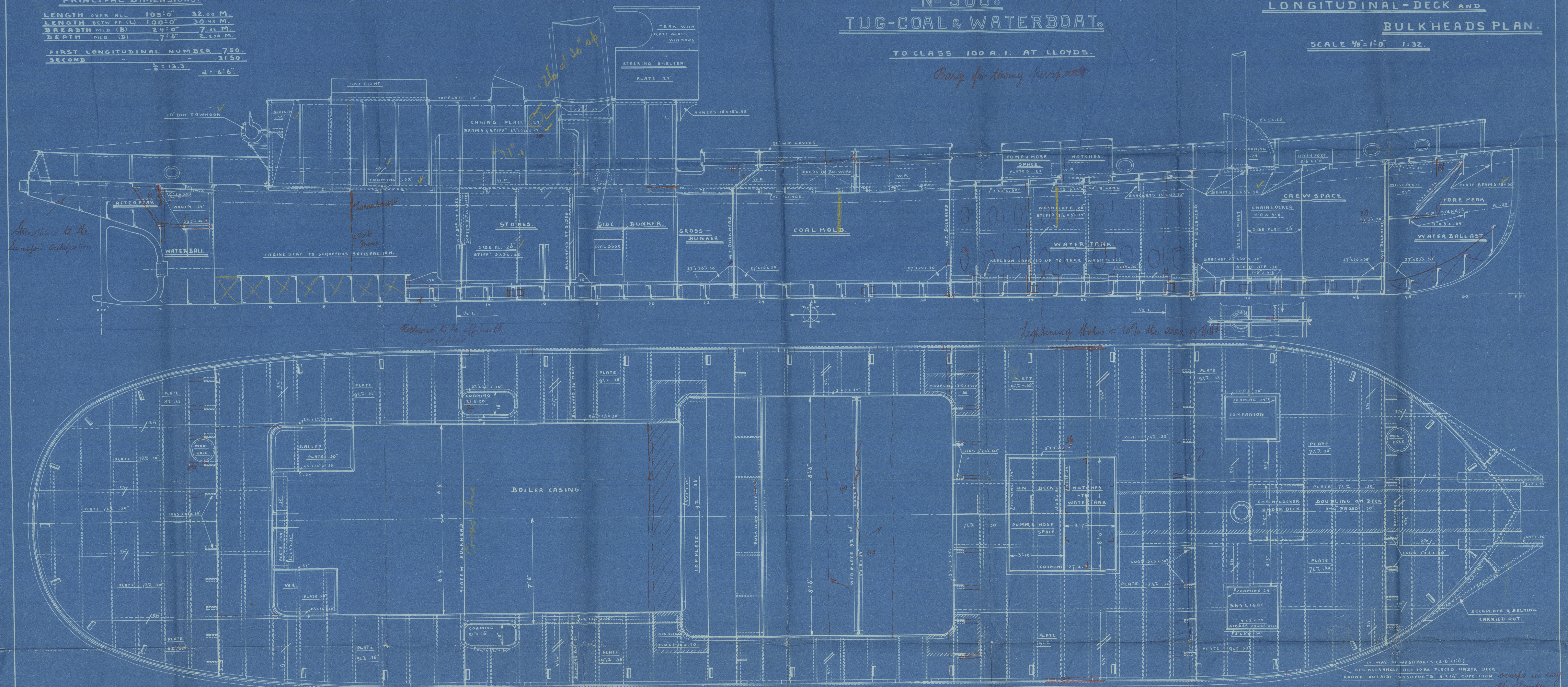
# N<sup>o</sup> 500. TUG-COAL & WATERBOAT.

## LONGITUDINAL-DECK AND BULKHEADS PLAN.

TO CLASS 100 A. I. AT LLOYDS.

SCALE  $\frac{1}{8}" = 1'-0"$  1:32.

*Barge for towing purposes*

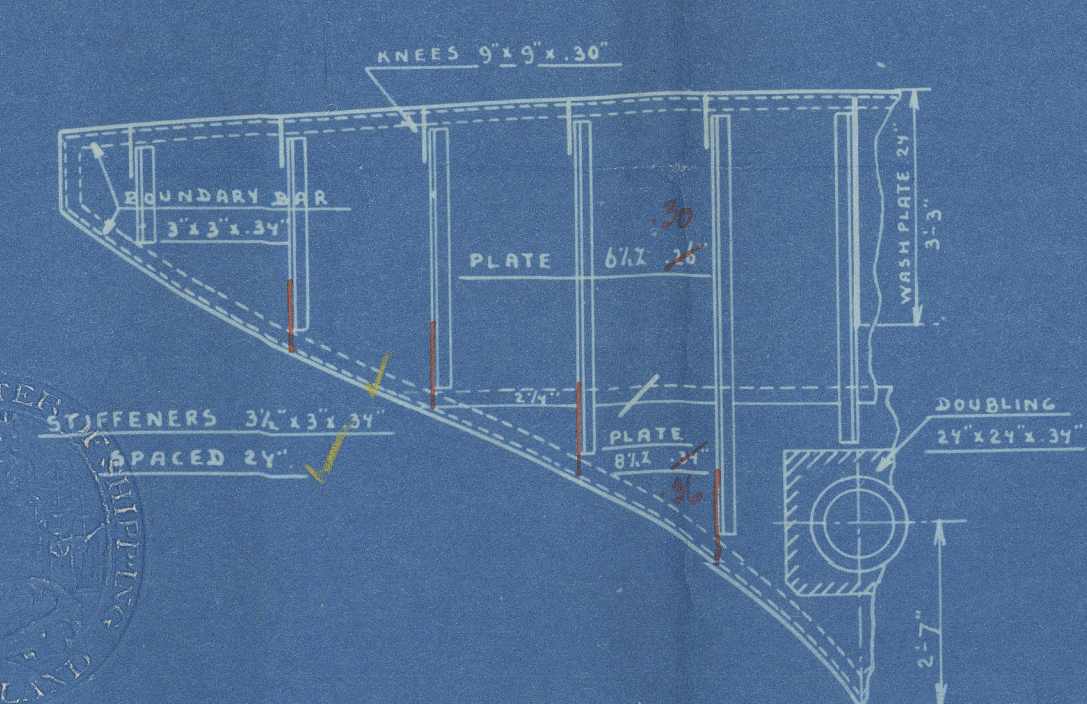


*Keelson to be efficiently  
braced*

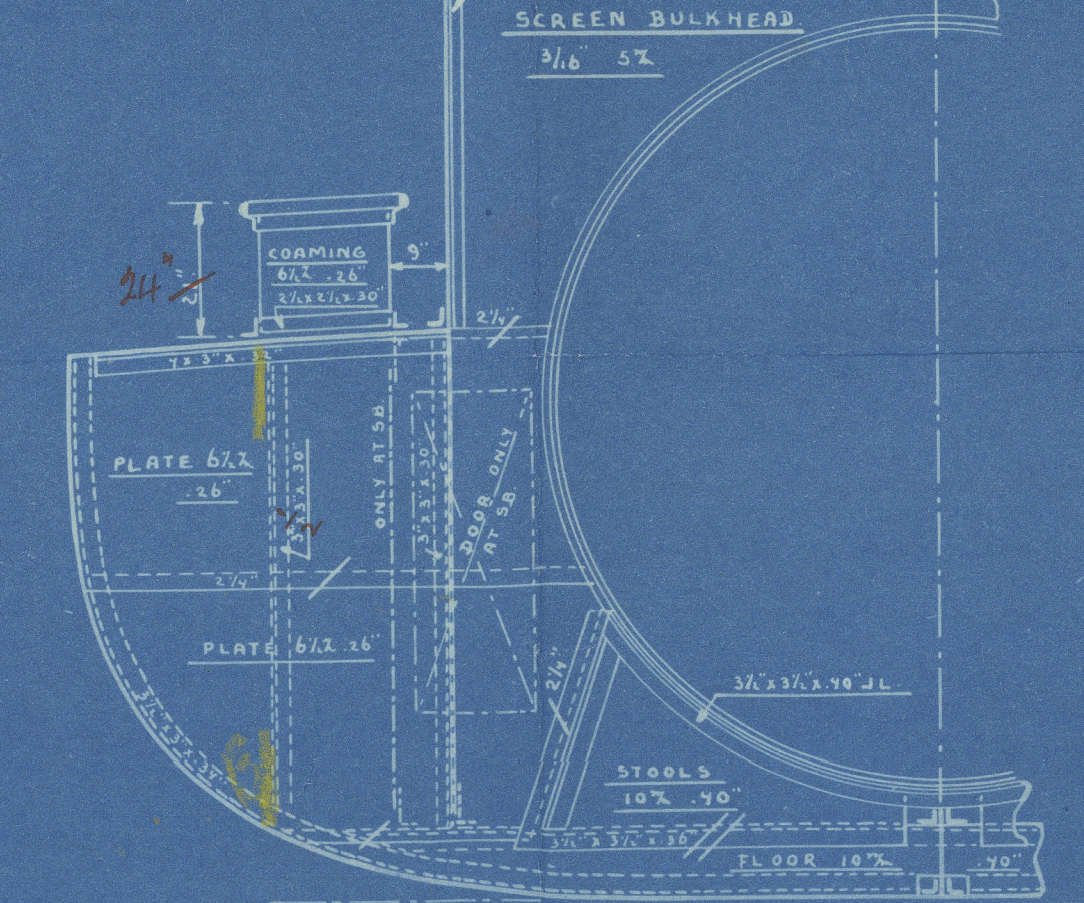
*Lightening Holes = 10% the area of bulk*

*IN WAY OF WASHPORTS (2'-6" x 6")  
STAINLESS-STEEL GRATE TO BE PLACED UNDER DECK  
ROUND OUTSIDE WASHPORTS 3'-6" x 1/2" COPE IRON*

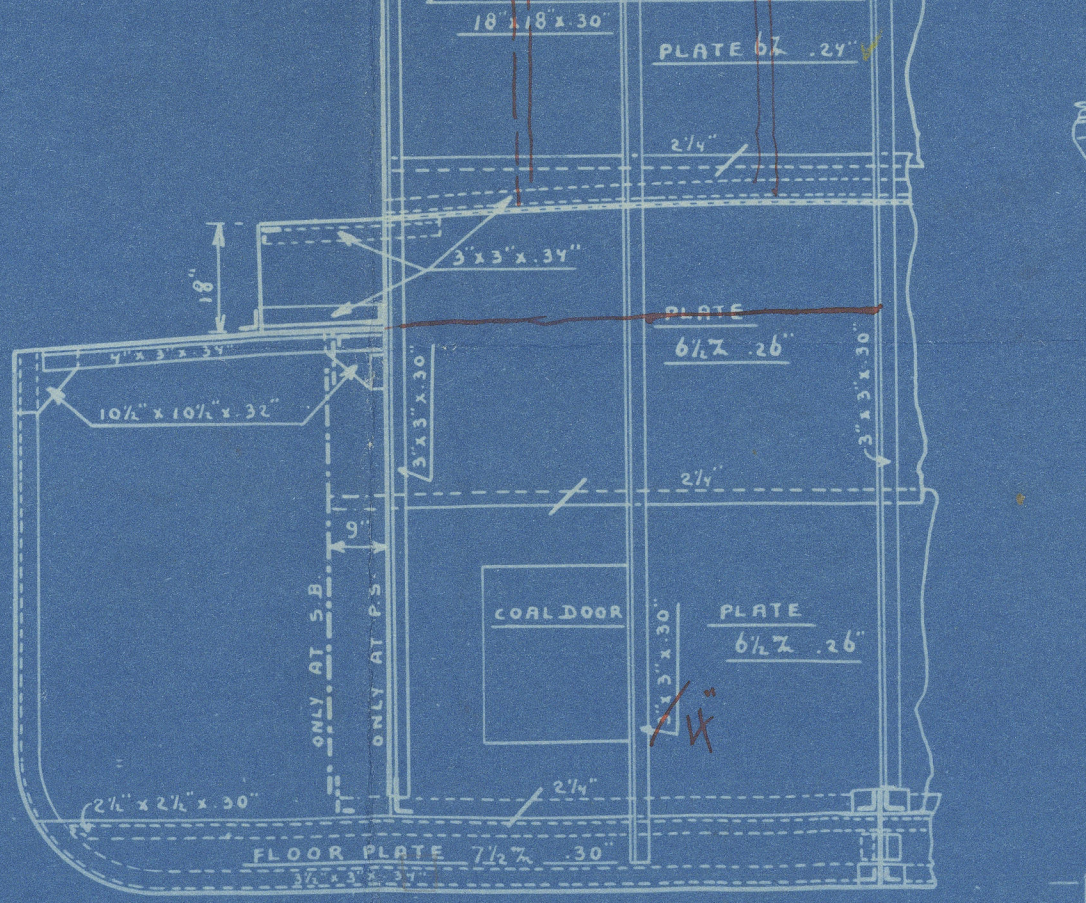
AFTER PEAK BULKHEAD  
ON FR. 4



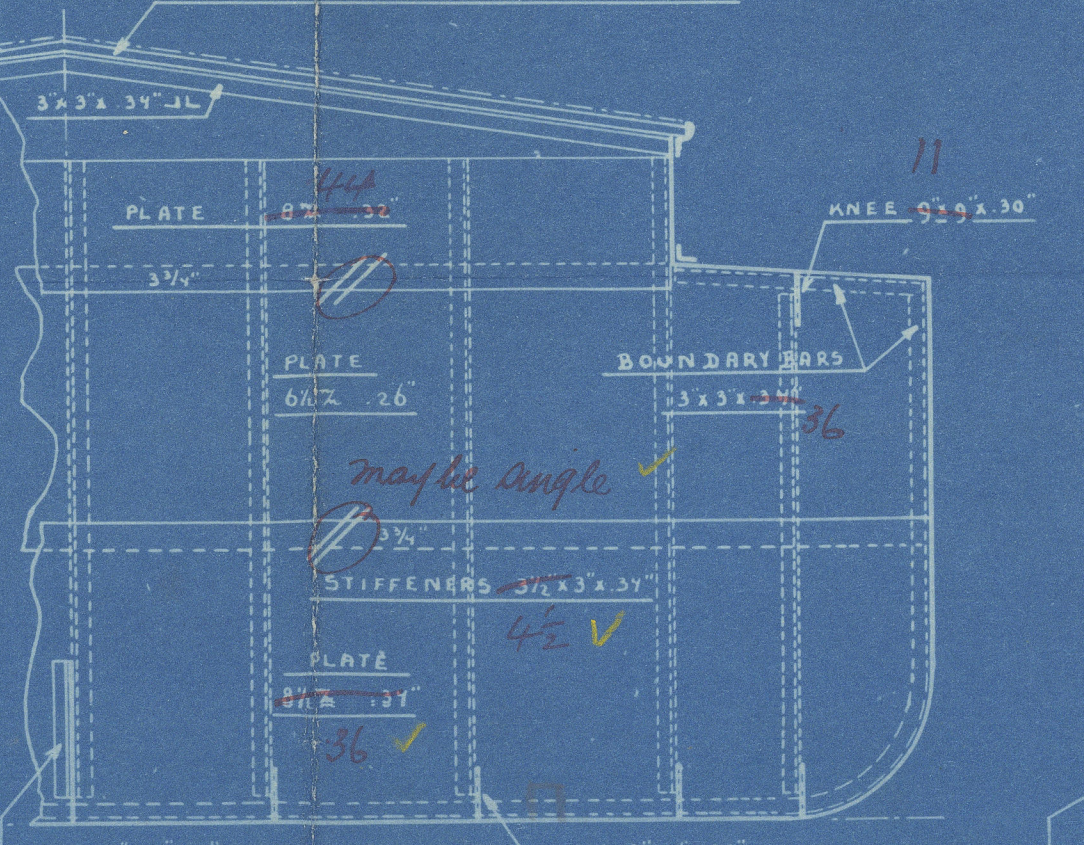
BULK HEAD  
ON FR. 13



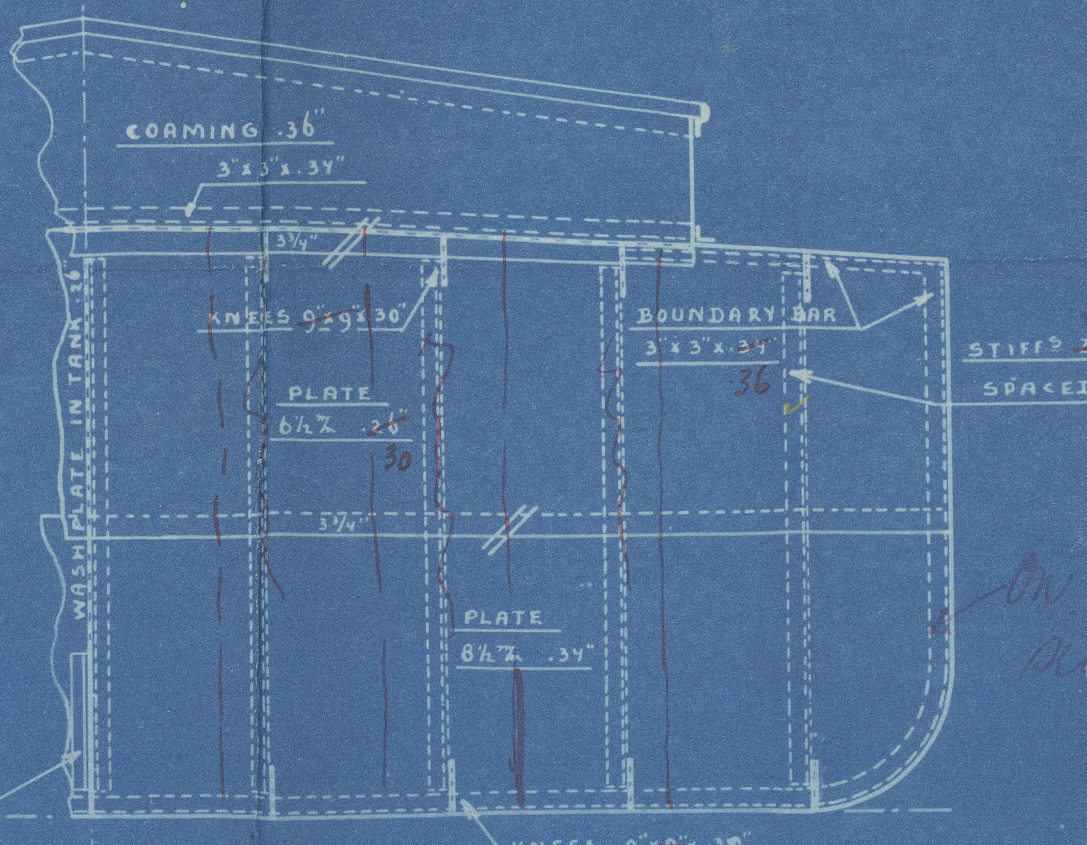
BULK HEAD  
ON FR. 21



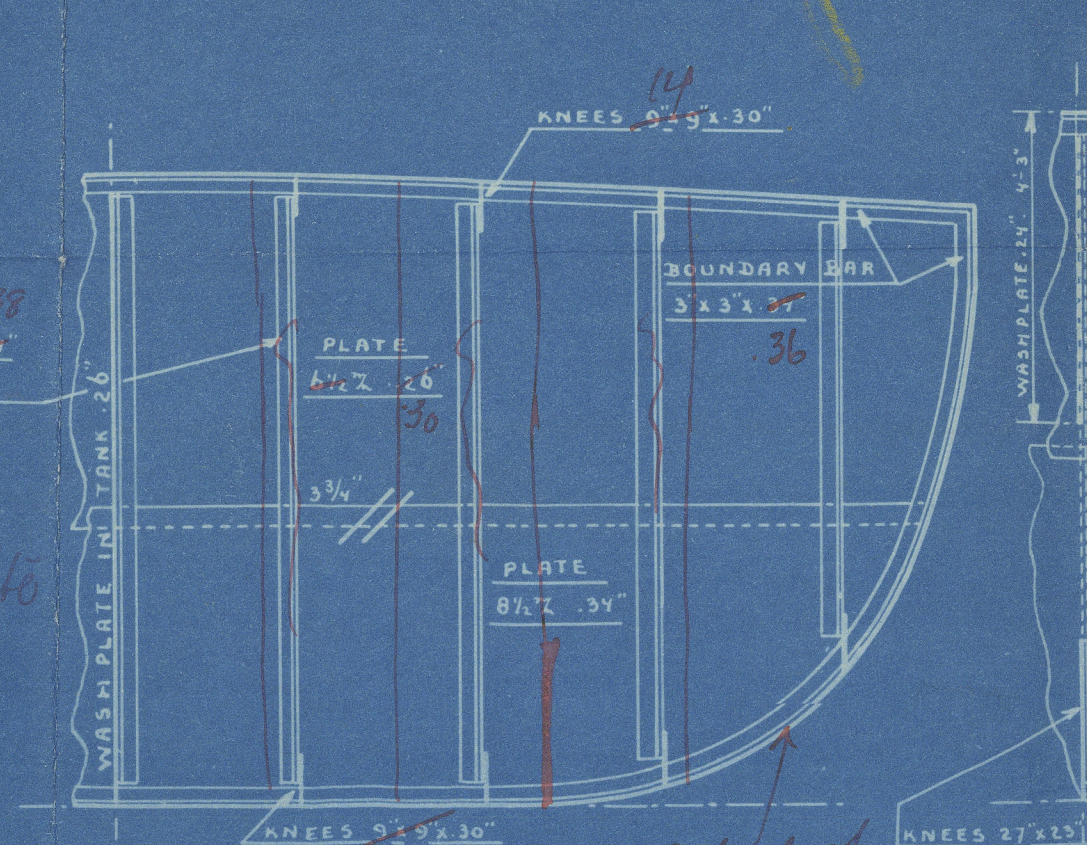
W.T. BULK HEAD ON FR. 23



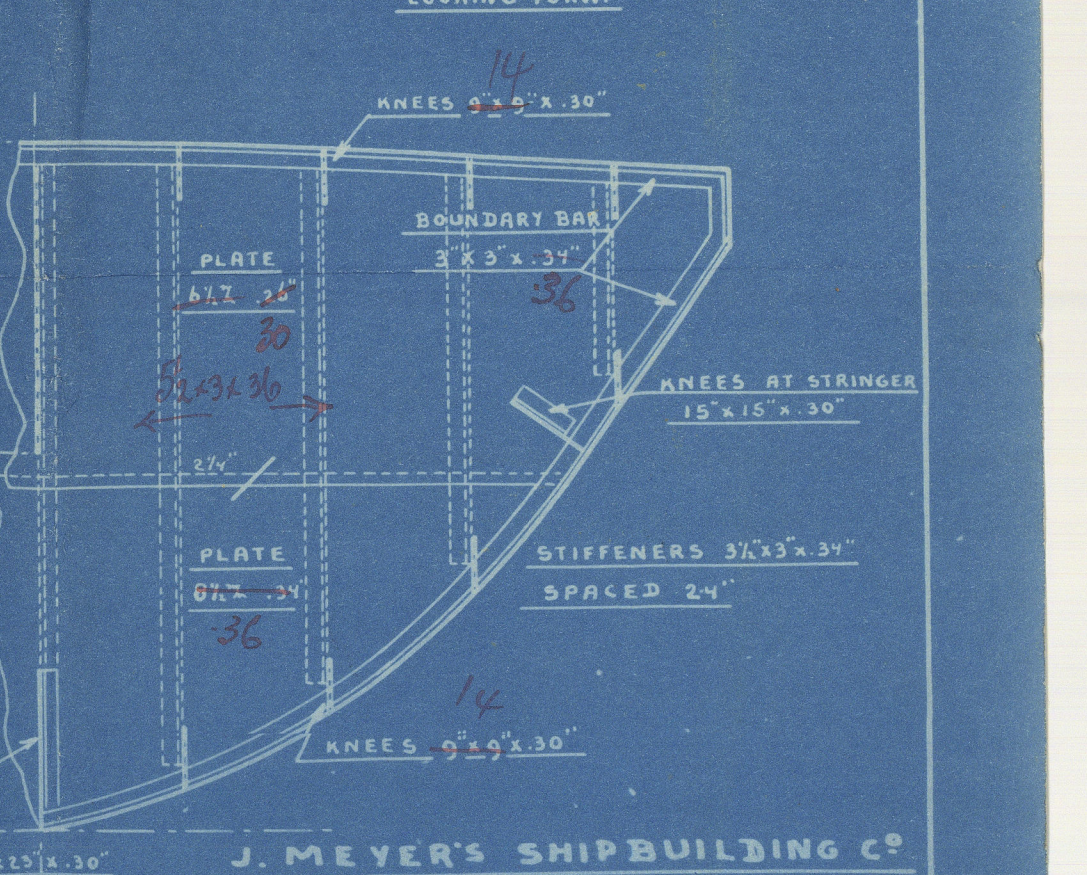
W.T. BULK HEAD ON FR. 31



W.T. BULK HEAD ON FR. 40



FORE PEAK BULK HEAD  
ON FR. 47



J. MEYER'S SHIPBUILDING CO.  
ZALT BOMMEL. (HOLLAND)



London.

Messrs J Mayne & B Co

Yard No 500

Profile & Deck Plan.

Barge "Hauler"

~~GEN. BOX NO~~

~~783~~



© 2021

Lloyd's Register  
Foundation

011273-011279-0005