

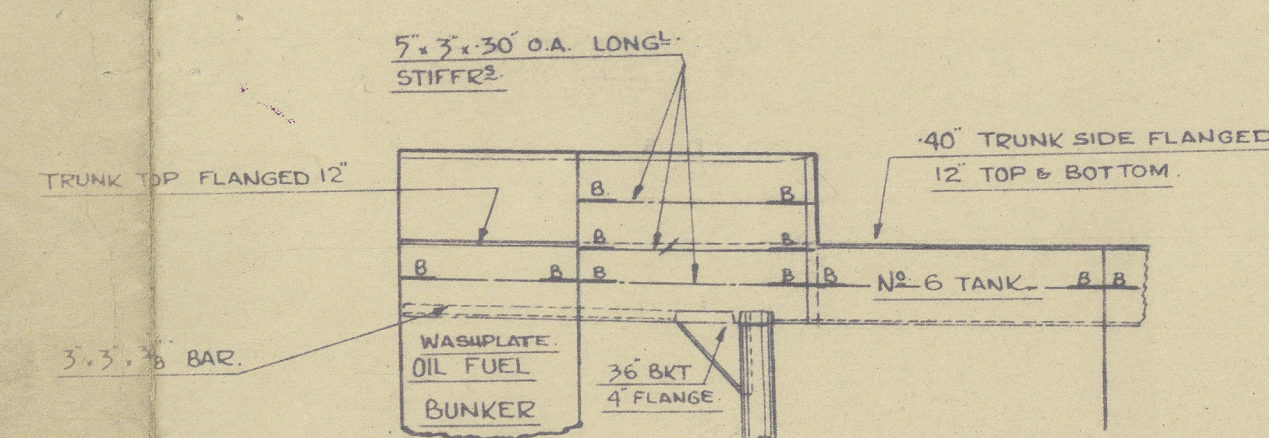
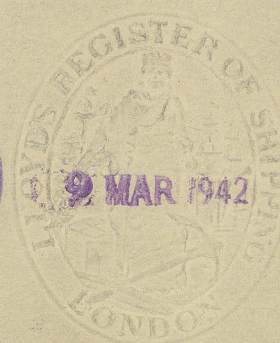
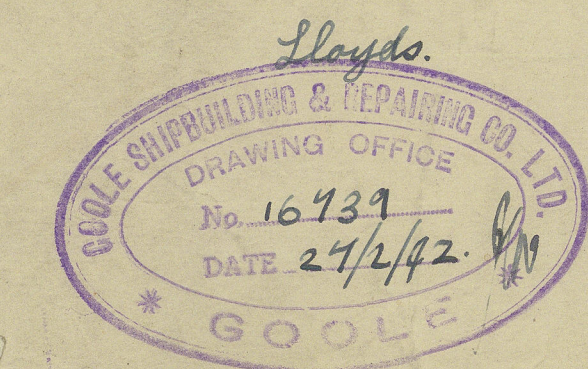
SHIP No. 389. "PERRARDON" SIRIUS

## PROFILE & DECKS.

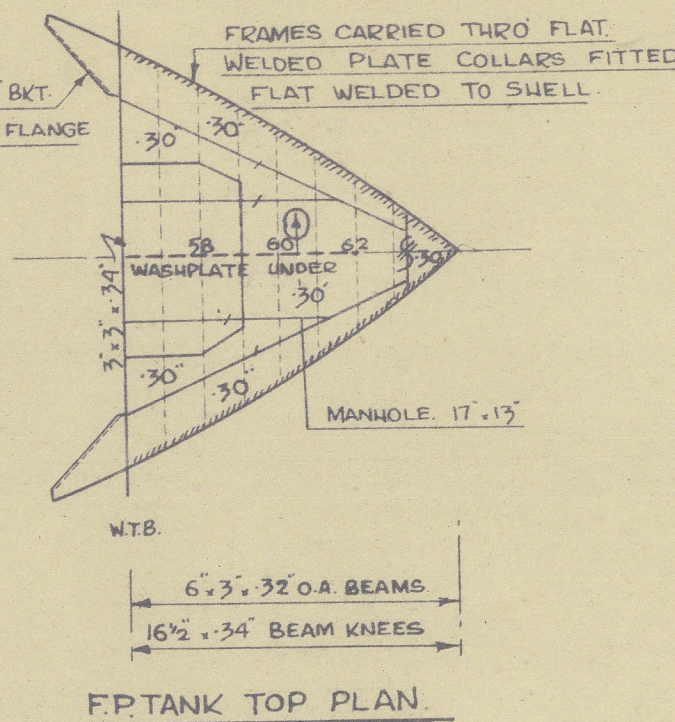
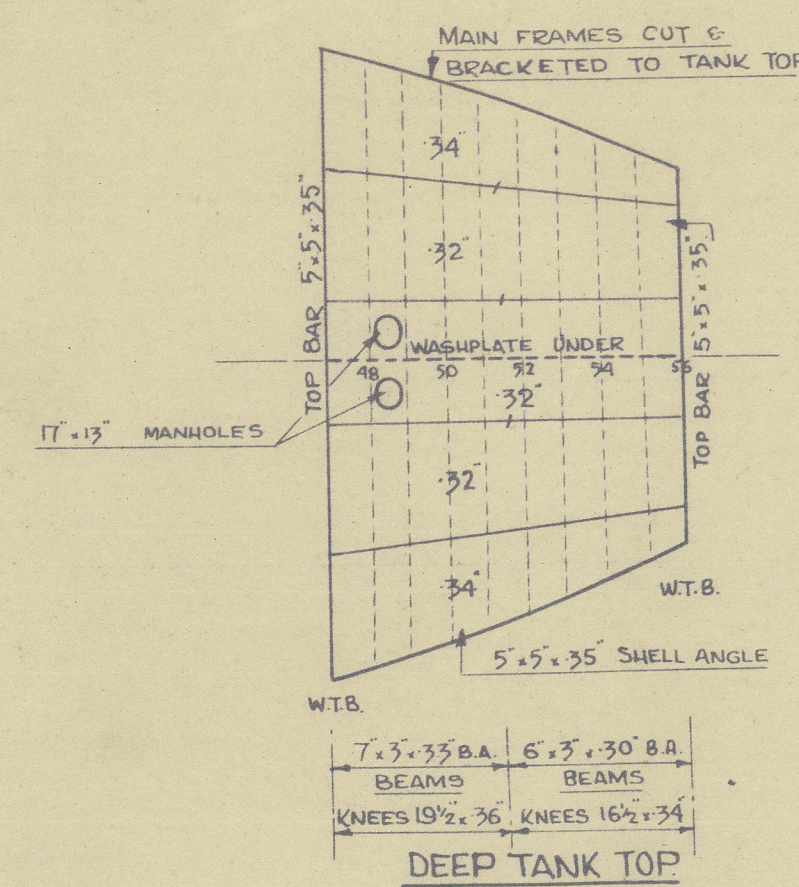
SCALE: - 1/8" = 1 FOOT.

DIMENSIONS: - 185'-0" B.P. x 31'-3" MLD. x 14'-0" MLD.

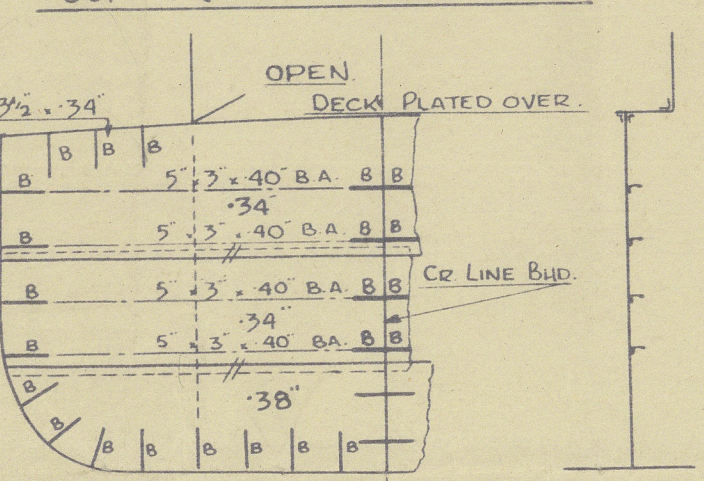
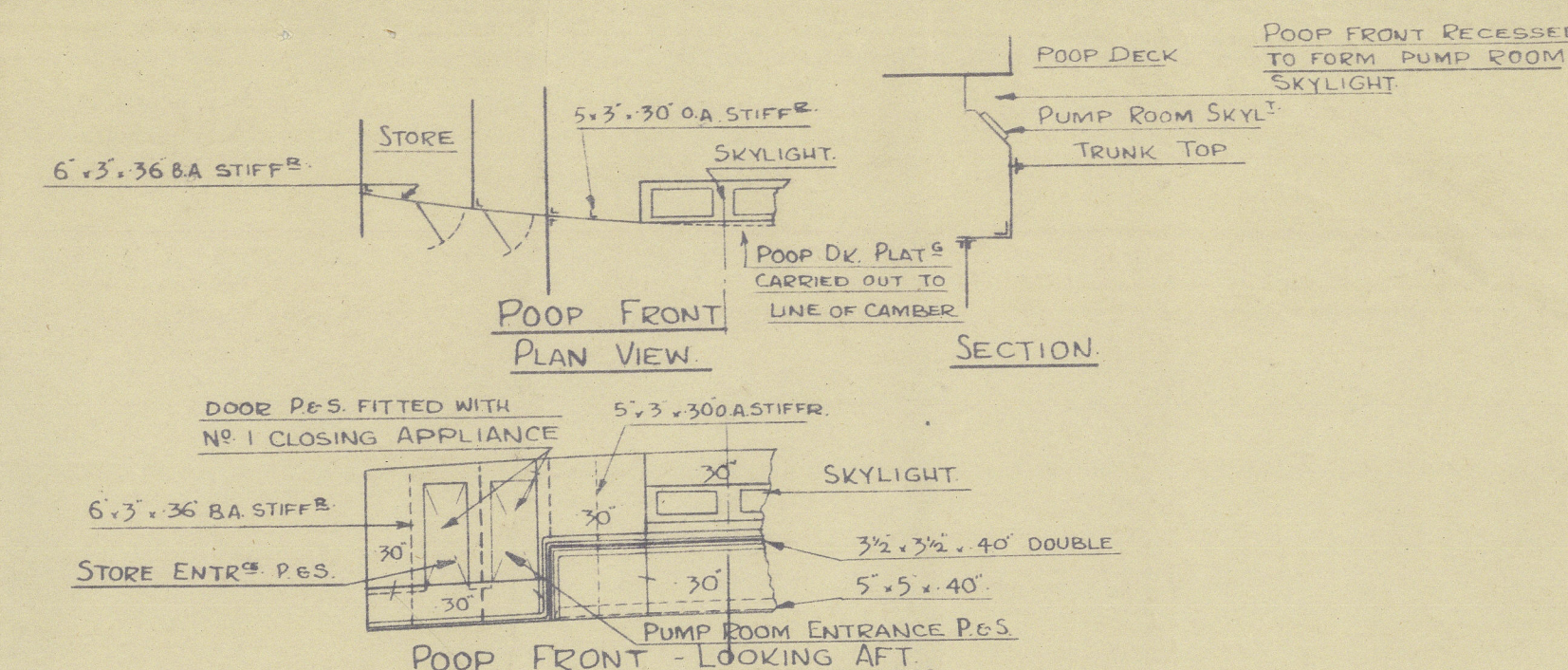
CLASS: - 100 A.I. LLOYDS.



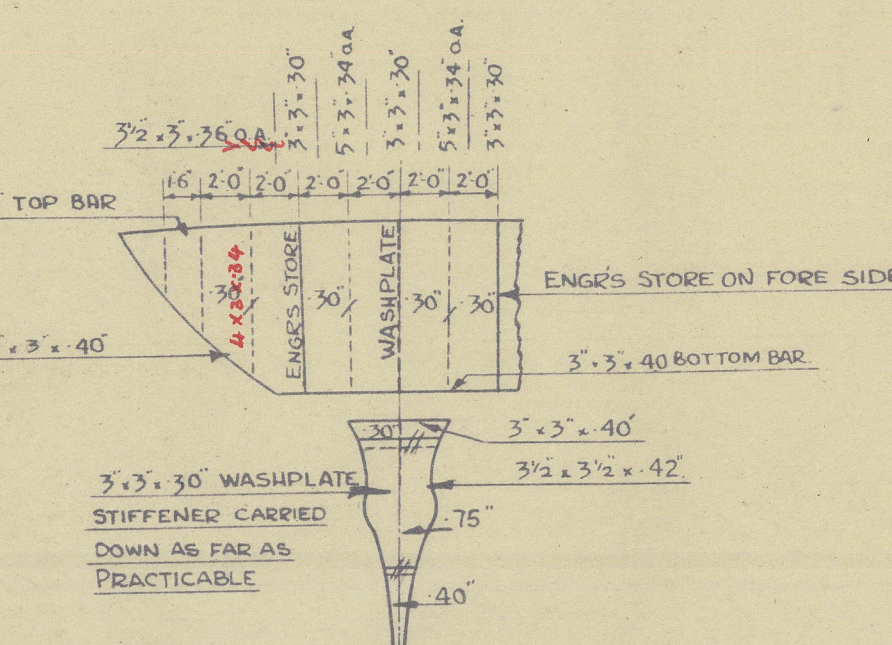
ELEVATION OF PORT SIDE OF EXPANSION TRUNK  
LOOKING TO PORT.  
STARBOARD SIDE SIMILAR.



BRACKETS TO BE FITTED IN WAY  
OF SIDE & BOTTOM LONGITUDINALS  
FOR 2 FRAME SPACES INTO CARGO  
HOLD & DEEP TANK.

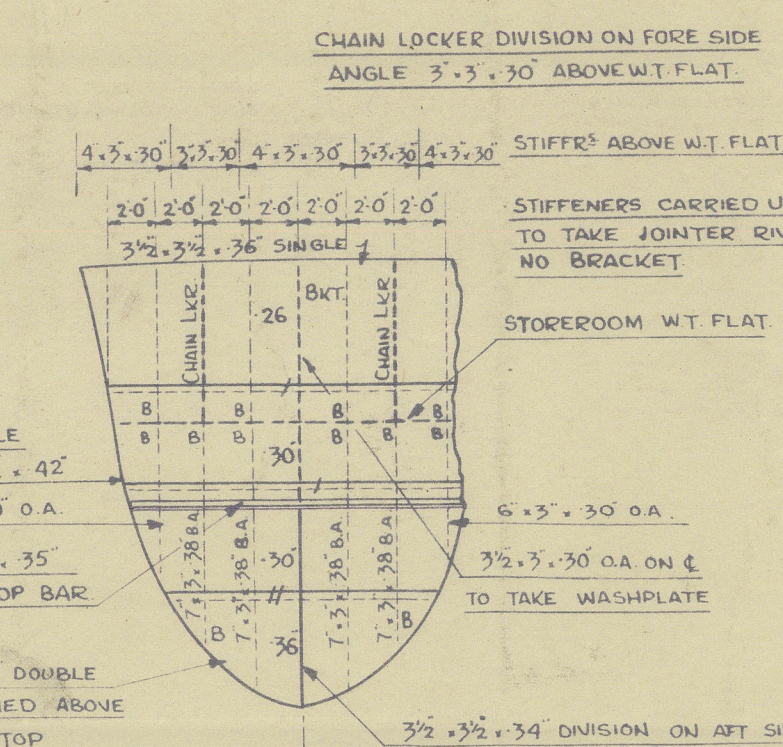


BULKHEAD No. 34  
LOOKING AFT.



WT BULKHEAD 5/7  
LOOKING AFT.

STRENGTHENING OF BOTTOM FOR  
2 STRAKES OF SHELL PLATING NEXT  
THE KEEL TO BE INCREASED 10% IN  
EXCESS OF MIDSHIP THICKNESS FROM  
1/2 L. FORD. DOUBLE RIVETTED SEAMS  
RIVETS THREE FLOORS & PLATING IN  
BOTTOM SPACED 5 1/2 DIA.



FRAME 56 WT BULKHEAD  
LOOKING FORWARD.

W.S.  
9.3.42

GOOLE SHIPBUILDING & REPAIRING Co. Ltd.			
GOOLE	Drawn by J.F.G.	Checked by J.F.G.	Date: 27/4/42 YORKS
PLANS SUPPLIED TO -			

PLAN No. 309



Profile & Decks

Empire of  
Laur

N/N  
POSEIDON  
X

N/N SIRIUS

---



© 2021

Lloyd's Register  
Foundation

011251-011258-0091