



Lloyd's Register of Shipping.

SURVEYS FOR FREEBOARD.

(CONDITIONS OF ASSIGNMENT.)

NEWCASTLE-ON-TYNE, No. 107250

GOWT. COPY ISSUED

23 MAY 1951

OWNERS' C.11 ISSUED

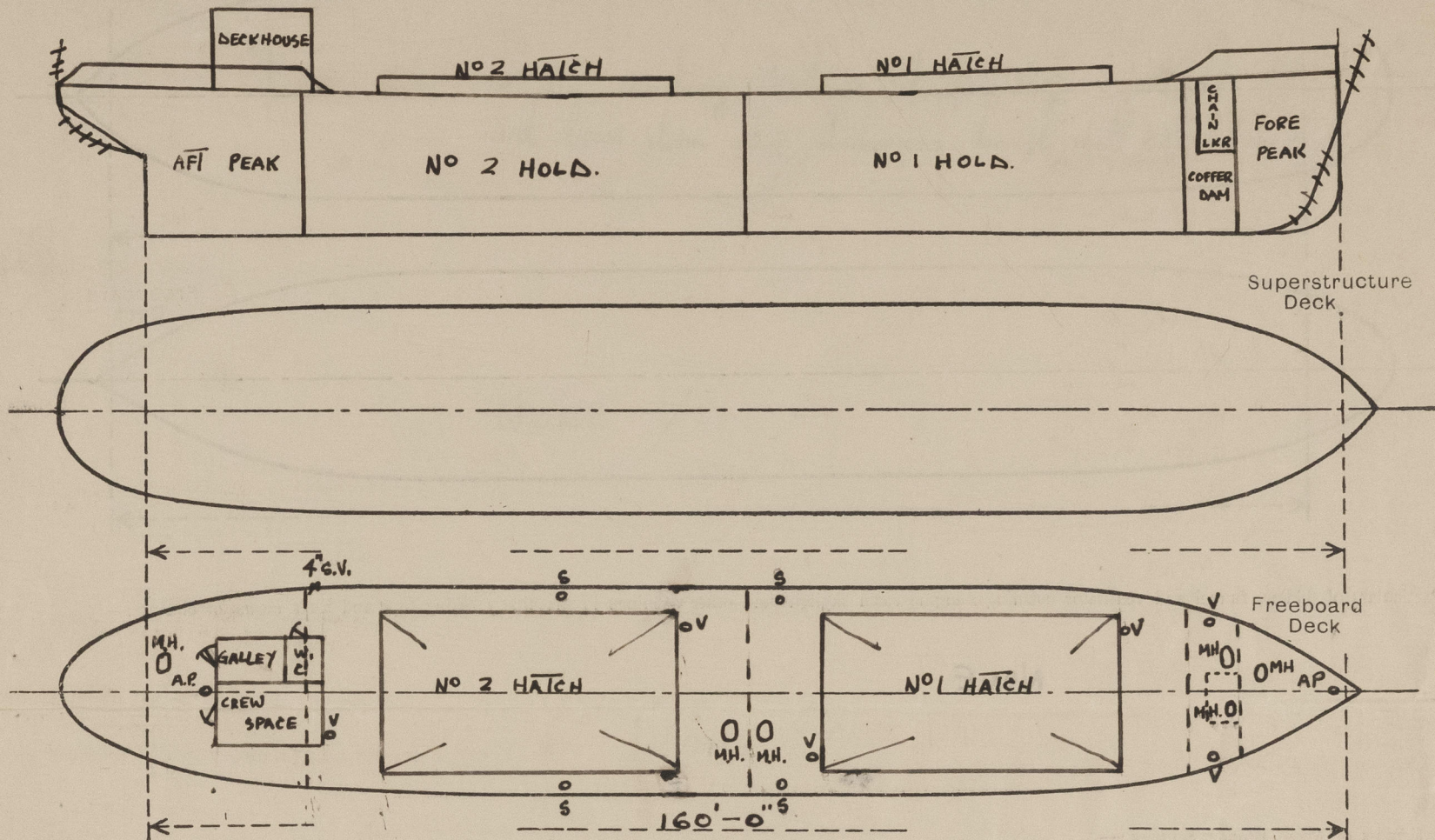
23 MAY 1951

23 MAY 1950

Index No. 42287
(For London Office only.)

Ship's Name "KANGAR" Port of Survey NEWCASTLE-ON-TYNE
 Official Number 183283 Surveyor's Signature R.H.Y. Gordon
 Nationality and Port of Registry BRITISH Date of Survey During construction

Disposition and dimensions of superstructures, trunks, deckhouses and machinery casings to be inserted in the diagrams and tabular statement:—



Particulars of Superstructures, Trunks, Casings, Deckhouses.

	Coaming	Plating	Stiffeners	Spacing	End Attachments of Stiffeners	Size of Openings	Height of Sills	Height of Casings
Poop Bulkhead								
Raised Quarter Deck Bulkhead ...								
Bridge, After Bulkhead								
Bridge, Forward Bulkhead								
Forecastle Bulkhead								
Trunk, Aft								
Trunk, Forward								
Exposed Machinery Casings on Freeboard or Raised Quarter Decks ...								
Exposed Machinery Casings on Superstructure Decks								
Machinery Casings within Superstructures not fitted with Class I Closing Appliances								
Deckhouses on Flush Deck Ships ...	30"	26"	3" x 2 1/2" x 25"	SIDES 24" ENDS 24" x 33"	WELDED TOP & BOTTOM AT FORE END	3 @ 5'-1" x 2'-1"	14"	7'-0"

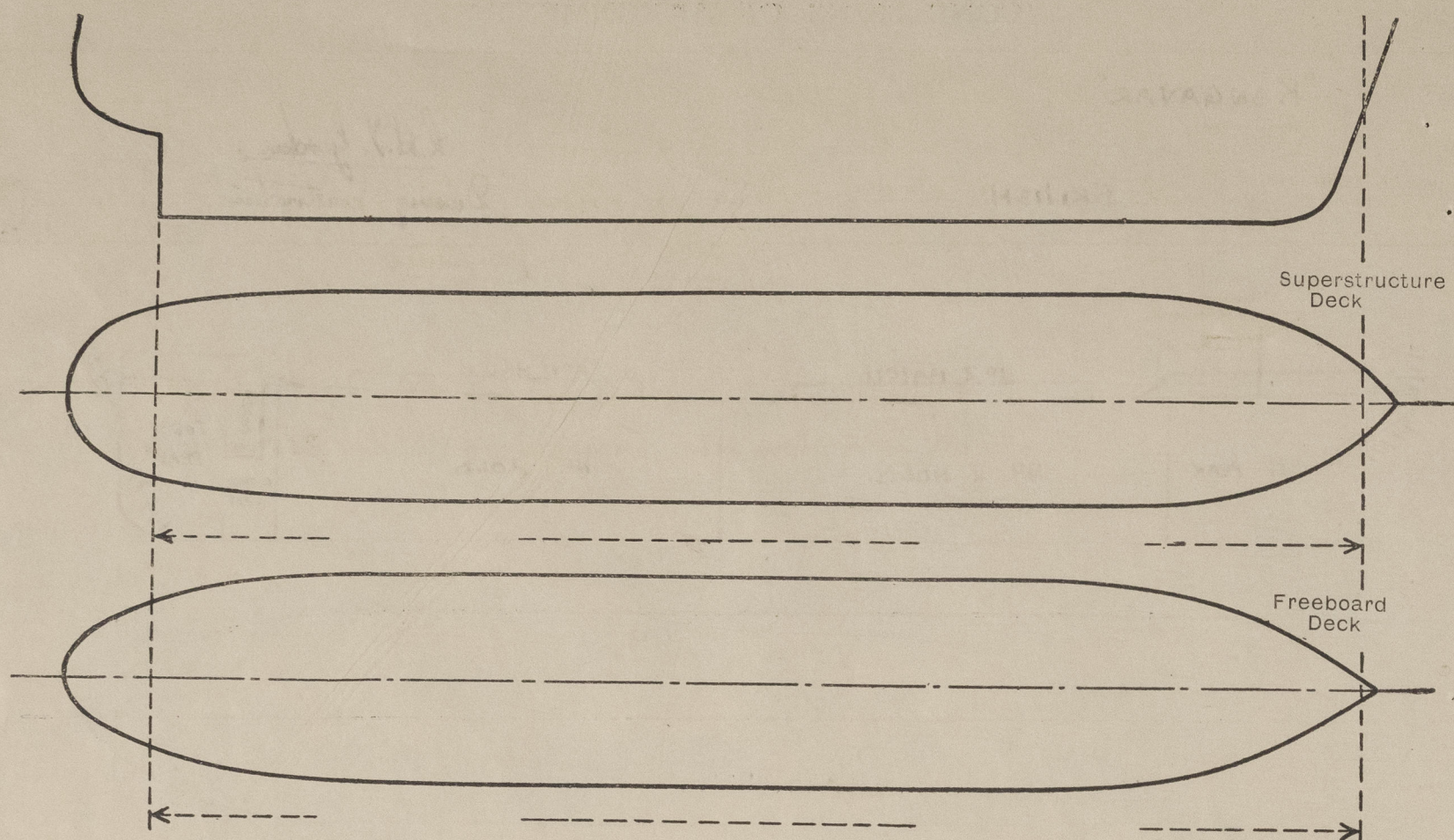
Particulars of Closing Appliances (state if capable of being manipulated from both sides).

Poop Bulkhead	✓
Raised Quarter Deck Bulkhead ...	✓
Bridge, After Bulkhead	✓
Bridge, Forward Bulkhead	✓
Forecastle Bulkhead	✓
Exposed Machinery Casings on Freeboard or Raised Quarter Decks ...	✓
Exposed Machinery Casings on Superstructure Decks	✓
Machinery Casings within Superstructures not fitted with Class I Closing Appliances	✓
Deckhouses on Flush Deck Ships ...	STEEL DOOR IN HALVES TO GALLEY. TEAK DOOR TO CREW SPACE. STEEL DOOR TO W.C.

ALL CAPABLE OF BEING OPERATED FROM BOTH SIDES.

PARTICULARS OF PROTECTION TO OPENINGS, ETC.

The following diagrams should be used to indicate the positions of cargo and coaling hatchways, gangway, cargo and coaling ports, ventilators, companionways, etc., which would affect the seaworthiness of the ship:—



Particulars of fiddle, funnel and ventilator coamings, engine room skylight and other openings in machinery casing tops and their means of closing:—

NONE

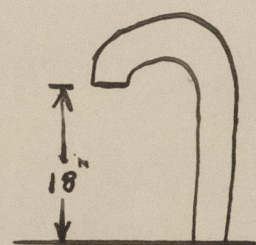
Particulars of Flush Bunker Scuttles:—

NONE

Particulars of Companionways:—

NONE

Particulars of Ventilators in exposed positions on freeboard and superstructure decks:—



6 in N° - 3P 35 - 4" dia. with gooseneck
18" from deck to mouth
all fitted with wood plugs permanently attached.

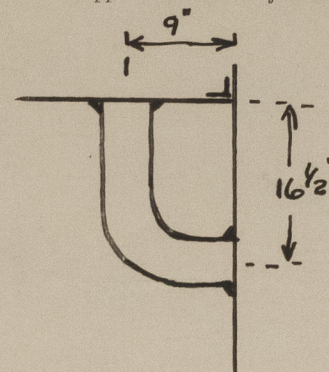
Particulars of Air Pipes in exposed positions on freeboard, raised quarter, or superstructure decks:—

2 in N° - similar to sketched above, to forward and
after peak tanks
Both fitted with wood plugs permanently attached.

Particulars of Gangway Cargo and Coaling Ports:—

NONE

Particulars of Scuppers and Sanitary Discharge Pipes:—



4 in N° - 4" dia pipe scuppers (2P 35)
E.W. to shell & deck - as per sketch.

4" dia. sanitary discharge pipe from W.C. port side aft
with brass storm valve, discharging through shell 22 1/2" below deck.

Particulars of Side Scuttles:—

NONE

Vertical distance of Sill of lowest Side Scuttle above top of keel

NONE

Particulars of Guard Rails:—

Upper Decks:— Drop stanchions 3'-0" high spaced approx. 4'-6" apart between bulwarks, with 1 1/2" F.S.W.R. at top only fitted with stretching screws.
Bulwarks forward and aft 2'-6" high x .24" thick, stays 7"x.35" bulb plate spaced 6'-0".
Rail bar 5"x3"x.30" bulb angle.

Particulars of Gangways, Lifelines, etc.:—

NONE

Particulars of Freeing Arrangements.

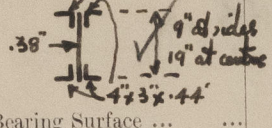

	Length of Bulwark	Height of Bulwark	Size of Freeing Ports	Number each side	Area each side	Rule area each side
After Well ...	31'-0"	2'-6"	None.	-	-	-
Forward Well ...	21'-0"	2'-6"	None. ✓	-	-	-

State position of each freeing port ... { After Well:— } None.
(F. and A. position and height above deck edge) { Forward Well:— }

State whether the freeing ports are fitted with shutters, bars, or rails, and give particulars of such:— None.

Additional area where sheer is less than standard.

PARTICULARS OF PROTECTION TO OPENINGS, ETC.

HATCHWAYS ON FREEBOARD AND SUPERSTRUCTURE DECKS.									
Description of Hatchway		Nº1	Nº2.						
Dimensions of Hatchway		38'-0" x 18'-0"	38'-0" x 18'-0"						
COAMINGS	Height above Deck	24"	24"						
	Thickness { Sides } { Ends }	.40"	.40"						
	Stiffeners for ends & sides	7x3 x .40 BA	7x3 x .40 BA						
	Brackets, Stays	welded plate	welded plate						
HATCH BEAMS	Number	4	4						
	Spacing	7'-7 1/4"	7'-7 1/4"						
	Scantling and Sketch		20° ✓						
	Bearing Surface	3" ✓	3" ✓						
FORE AND AFTERS	Number	1 @ 4	1 @ 4						
	Spacing	7'-0"	7'-0"						
	Unsupported Lengths	7'-0"	7'-0"						
	Scantling and Sketch		20°						
HATCH COVERS	Material	WOOD	WOOD						
	Thickness	3"	3"						
	How fitted	ATHWARISHIPS	ATHWARISHIPS						
	Bearing Surface	2 1/2" ✓	2 1/2" ✓						
Spacing of Cleats		24"	24"						
Number of Tarpaulins		2 ✓	2 ✓						
<p>*Are wood fore and afters steel shod at all bearing surfaces? YES ✓</p> <p>Are battens and wedges efficient and in good condition? YES ✓</p> <p>Are tarpaulins in good condition and in accordance with rule requirements? YES ✓</p> <p>Are lashings provided in accordance with rule requirements? YES ✓</p>									

Particulars of any special features:—

2 — 20"x16" manholes to forward and after peak tanks.
 4 — 20"x18 " " holds (2), chain lockers, and cofferdam.
 Above manholes fitted with 6"x3"x.38" angle coamings, permanently attached rubber jointed plate covers 1/2" thick secured by 6 - 3/4" toggles, 2 of which form hinges. ✓