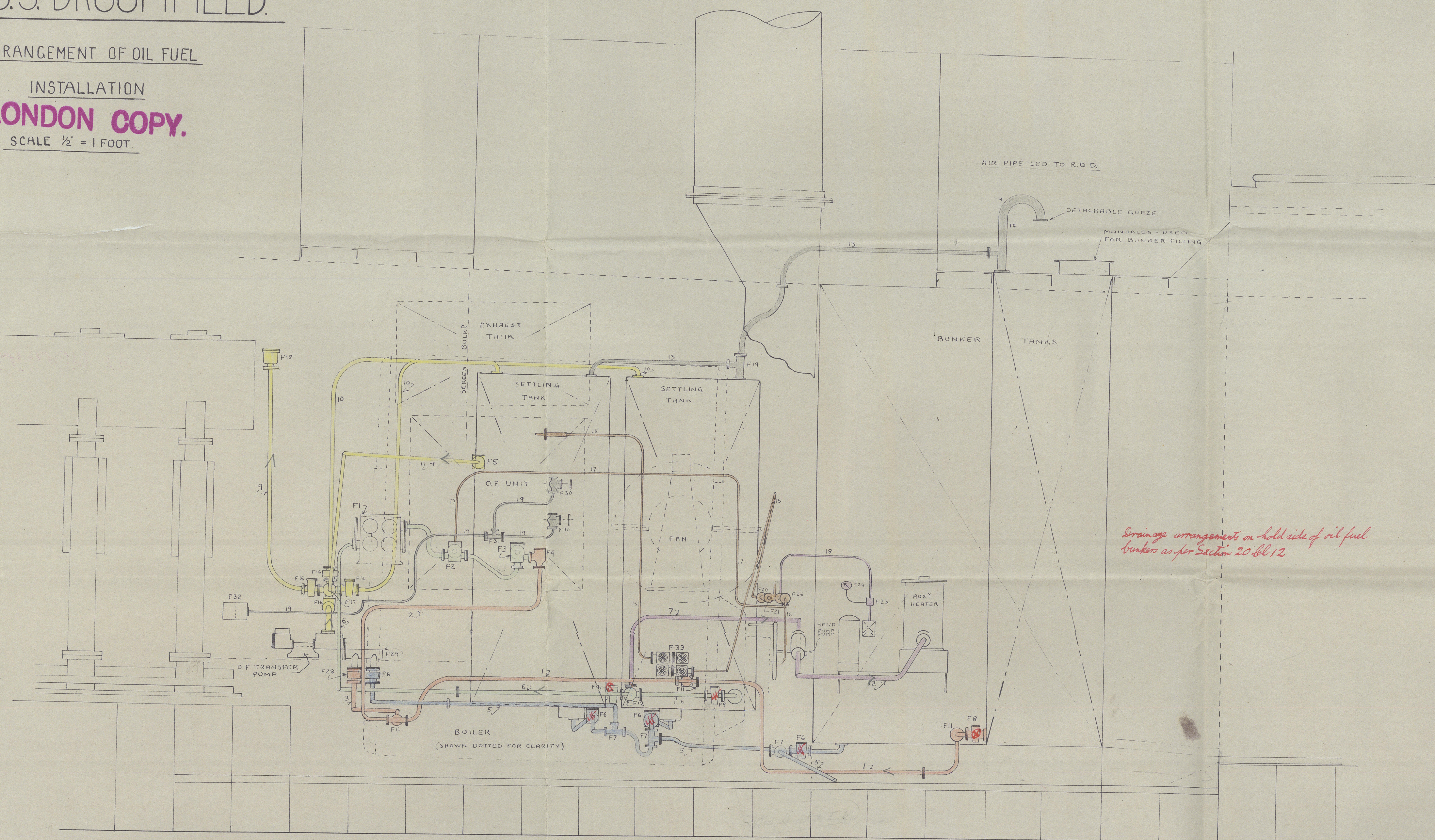


S.S. BROOMFIELD.

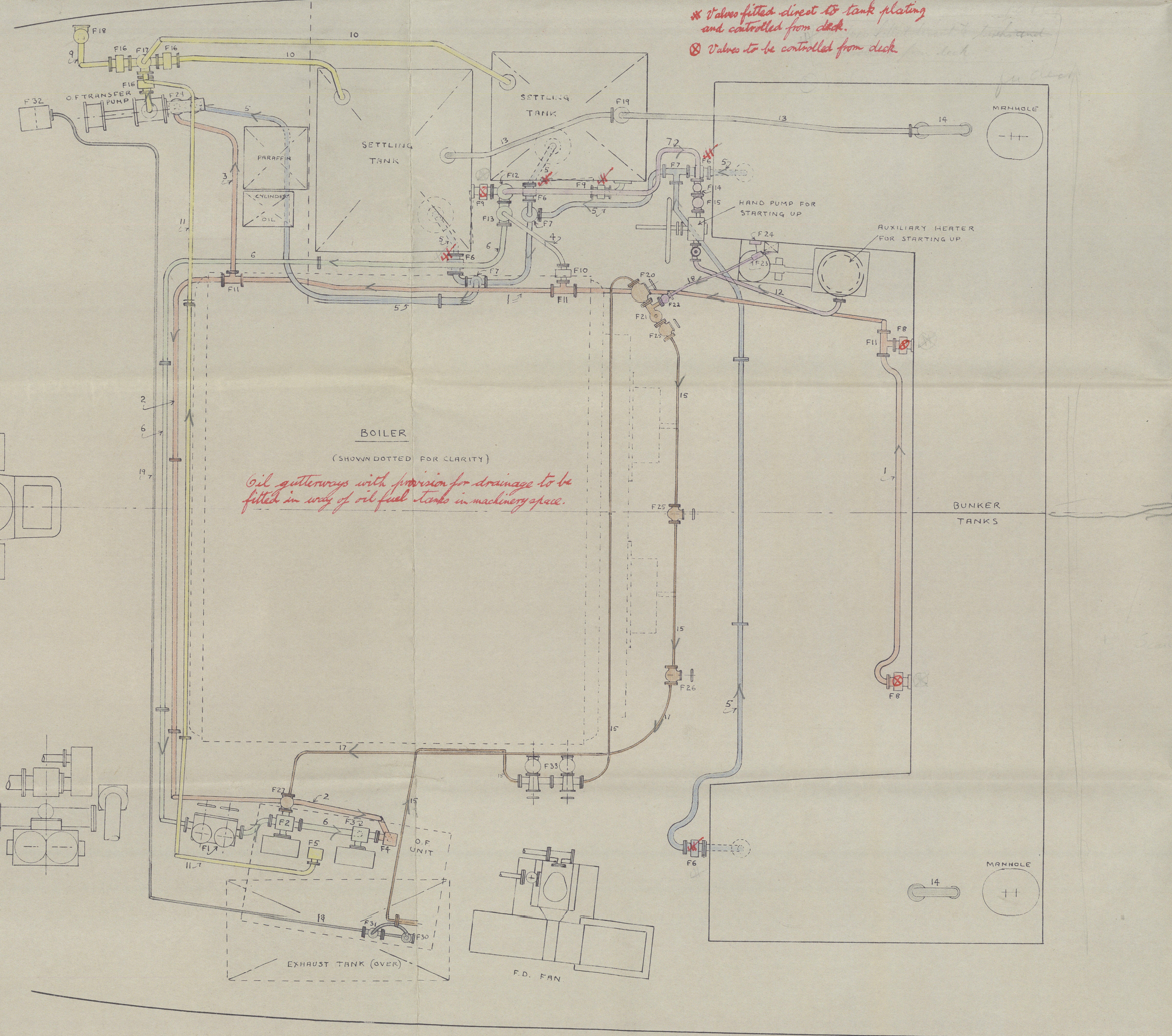
ARRANGEMENT OF OIL FUEL

INSTALLATION
LONDON COPY.
SCALE 1/2" = 1 FOOT.



N°	DIA.	MAT.	ITEM	TEST PRESS.
✓1	2"	LWS	COMMON SUCTION FROM BUNKER TANKS	50
✓2	2"	"	MAIN FUEL PUMPS SUCTION FROM BUNKER TANKS	"
✓3	1 1/2"	"	TRANSFER PUMP " " " "	"
✓4	2"	"	CROSS CONNECTION - SETTLING TANKS GRAVITY FILLING	"
✓5	1 1/2"	"	TRANSFER PUMP SLUDGE SUCTION FROM BUNKERS & SETTLING TANKS	"
✓6	2"	"	MAIN FUEL PUMPS SUCTION FROM SETTLING TANKS	"
✓7	2"	"	HAND PUMP SUCTION FROM SETTLING TANKS	"
✓8	1 1/2"	"	TRANSFER PUMP DISCHARGE TO MANIFOLD	"
✓9	1 1/2"	"	" " " " OVERBOARD	"
✓10	1 1/2"	"	" " " " TO SETTLING TANKS	"
✓11	1 1/2"	"	MAIN FUEL PUMPS " " " "	"
✓12	1 1/2"	S.D.	HAND PUMP DISCHARGE TO AUXILIARY HEATER	400
✓13	1 1/2"	LWS	SETTLING TANK AIR & OVERFLOW PIPES	50
✓14	4"	"	BUNKER TANKS AIR PIPES	"
✓15	3/4"	S.D.	DISCHARGE FROM OIL FUEL UNIT TO BOILER FRONT	400
✓16	3/8"	"	SUPPLY TO BURNERS	"
✓17	1/2"	"	CIRCULATING RETURN FROM BOILER FRONT TO FUEL PUMP SUCTION	50
✓18	3/4"	"	AUXILIARY HEATER DISCHARGE TO BOILER FRONT	400
✓19	1/2"	COPPER	O.F. UNIT HEATER DRAINS TO OBSERVATION TANK	50

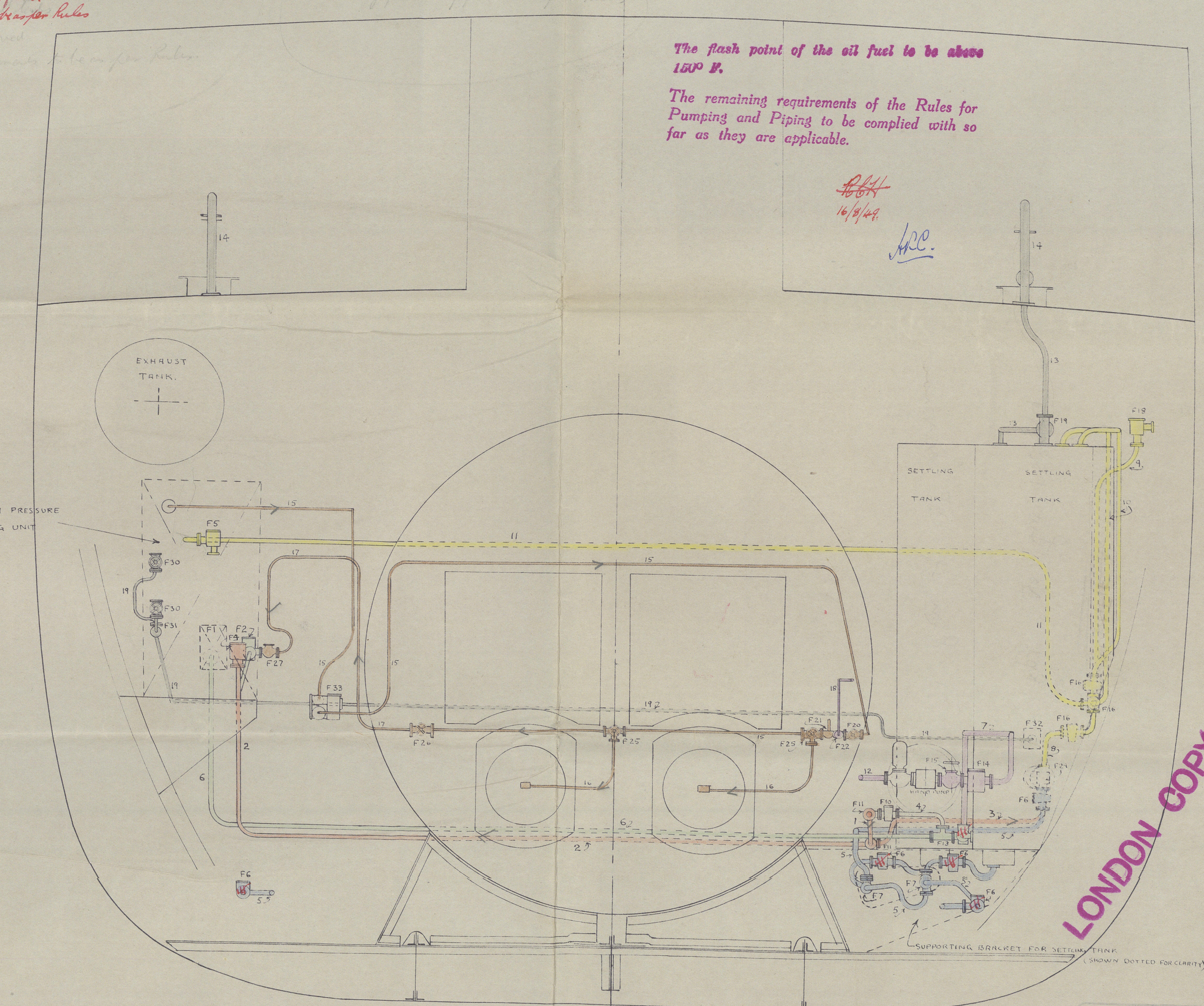
MARK	SIZE	QUANTITY	ITEM	TEST PRESS.
F1	2"	CI 1	DUPLEX SUCTION STRAINER	50
F2	2"	CI 1	MAIN FUEL PUMP SUCTION VALVE	"
F3	2"	CI 1	" " " " ANGLE SUCTION VALVE	"
F4	2"	CI 1	" " " " " (BUNKER TANKS)	"
F5	1 1/2"	CI 1	" " " " DISCHARGE VALVE TO SETTLING TANKS	400
F6	1 1/2"	CI 1	5 SLUICE VALVES, SLUDGE SUCTIONS FROM SETTLING TANKS & BUNKERS	50
F7	1 1/2"	CI 3	TEE PIECES	"
F8	2"	CI 2	SLUICE VALVES, SUCTIONS FROM BUNKER TANKS	"
F9	2"	CI 2	" " " " SETTLING TANKS	"
F10	2"	CI 1	" " " " CROSS CONNECTION FOR GRAVITY FILLING	"
F11	2x2x2	CI 3	TEE PIECES, SUCTION FROM BUNKER TANKS	"
F12	2x2x2	CI 1	FOUR WAY BRANCH PIECE, SUCTION FROM SETTLING TANKS	"
F13	2x2x2	CI 1	TEE PIECE	"
F14	2"	CI 1	FILTER, HAND PUMP SUCTION	"
F15	2"	CI 1	HAND PUMP SUCTION S.D.N.R. VALVE	"
F16	1 1/2"	CI 4	SLUICE VALVES, TRANSFER PUMP DISCHARGES	"
F17	1 1/2"	CI 1	FOUR WAY BRANCH PIECE, TRANSFER PUMP DISCHARGE	"
F18	1 1/2"	CI 1	SHIPS SIDE DISCHARGE VALVE	"
F19	1 1/2x1x1/2	CI 1	TEE PIECE, SETTLING TANK AIR PIPES	"
F20	3/4"	CI 1	S.D. MASTER VALVE, SUPPLY TO BOILER FRONT	400
F21	3/4x3/4x1/2	CI 1	TEE PIECE WITH THERMOMETER POCKET SUPPLY TO BOILER FRONT	"
F22	1/2"	CI 1	S.D.N.R. VALVE, HAND PUMP DISCHARGE	"
F23	1 1/2x1 1/2	MS 1	TEE PIECE	"
F24	5"	1	PRESSURE GUAGE & COCK, HAND PUMP DISCHARGE	"
F25	3/4x3/4x1/2	CI 2	S.D. VALVES, SUPPLY TO BURNERS	"
F26	3/8"	CI 1	CIRCULATING S.D. VALVE	"
F27	3/8"	CI 1	" " " " NON-RETURN VALVE	50
F28	1 1/2"	CI 1	SLUICE VALVE, TRANSFER PUMP SUCTION FROM BUNKER TANKS	"
F29	1 1/2x1 1/2x1 1/2	CI 1	BRANCH PIECE, TRANSFER PUMP SUCTION	"
F30	1 1/2"	CI 2	S.D. VALVES, O.F. UNIT HEATER DRAINS	"
F31	2x2x2	CI 1	TEE PIECE	"
F32	1 1/2"	MS 1	OBSERVATION TANK HEATER DRAINS	"
F33	3/4"	CI 1	DUPLEX A.K. STRAINER	400



The steam supply to the oil fuel transfer pump, with pressure pump and fire safety pump, is to be controlled as per Section 20-66/12.

The steam supply to the oil fuel transfer pump, with pressure pump and fire safety pump, is to be controlled as per Section 20-66/12.

The steam supply to the oil fuel transfer pump, with pressure pump and fire safety pump, is to be controlled as per Section 20-66/12.



The flash point of the oil fuel to be above 150° F.

The remaining requirements of the Rules for Pumping and Piping to be complied with so far as they are applicable.

14/4/45

LONDON COPY.

LONDON COPY.

LONDON COPY.

LONDON COPY.

- CONVERSION -

"BROOMFIELD"

Rpt. No. Lis. 130384.

1 Plan of O.F. Conversion

S/S BROOMFIELD

PIPING PLANS



© 2021

Lloyd's Register
Foundation