

7 NOV 1946

DEADWEIGHT SCALE

FREEBOARD IN FEET	DRAUGHT IN FEET EVEN KEEL	DEADWHT IN TONS	TONS PER INCH	MMT TO CHANGE TRIM 1"
1	10	500	8.04	78.2
2	9	400	7.91	73.11
3	8	300	7.66	67.6
4	7	200	7.29	62.2
5	6	100	7.00	56.8
6	5	0	6.79	51.3

OIL FUEL BUNKERS

COMPARTMENT	FRAMES	LENGTH	CU. FT.	TONS O.F.
O.F. BKR. PORT	7-12	8'-9"	540	13.5
O.F. BKR. STAR	7-12	8'-9"	540	13.5
TOTAL BKRS			1080	27.0

OIL FUEL CAPACITY IS CALCULATED AT 40 CU. FT./TON.
FOR FULL CAPACITY OF TANKS.

WATER BALLAST

COMPARTMENT	FRAMES	LENGTH	CU. FT.	TONSWB
AFT PEAK	0-7	12'-3"	840	24.0
FORE PEAK	39-51	13'-11"	900	25.7
NO. 2 W.B. TANK	28-31	20'-0"	2310	66.0
AFT COFFERDAM	24-25	1'-9"	456	13.0
FOR. COFFERDAM	37-39	3'-6"	590	16.8
TOTAL W.B.			5096	145.5
FRESH WATER TK.			64	1.8
WINCH OR WATER T. F.	37-39	3'-6"	29	.8
WINCH OR WATER T. R.	24-25	1'-9"	29	.8
W/E OR WATER TK.	24-25	1'-9"	59	1.6

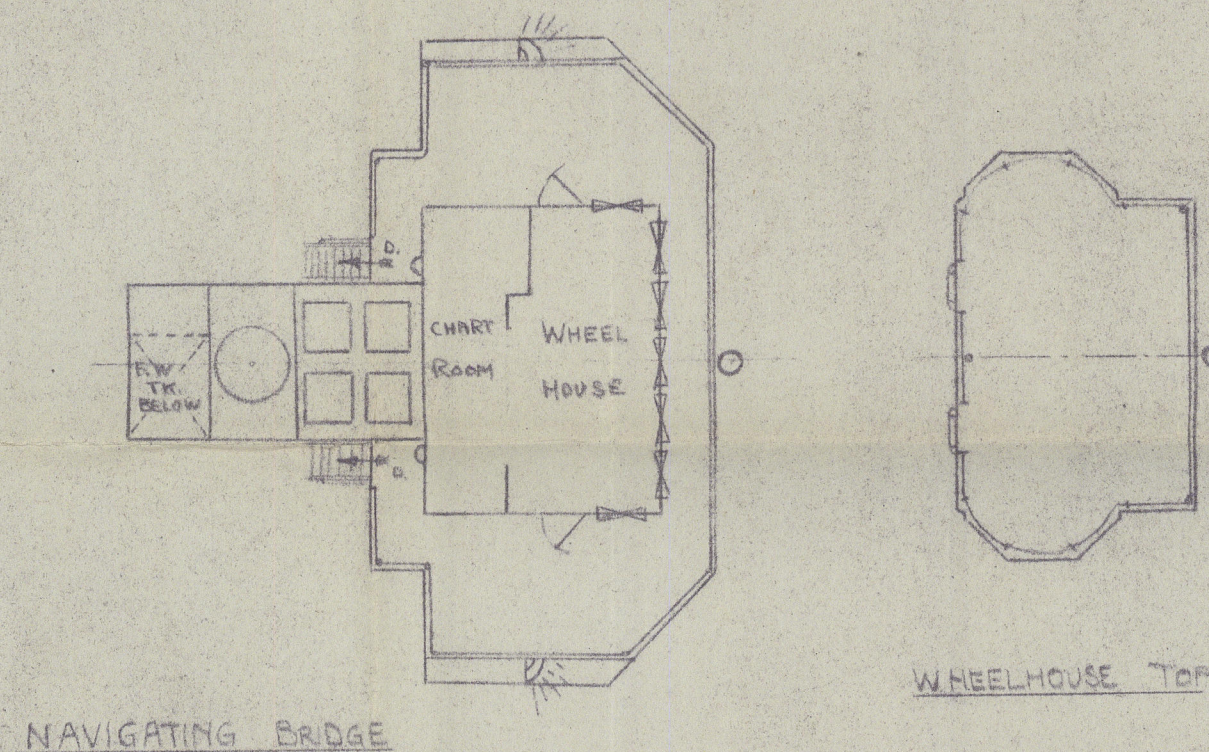
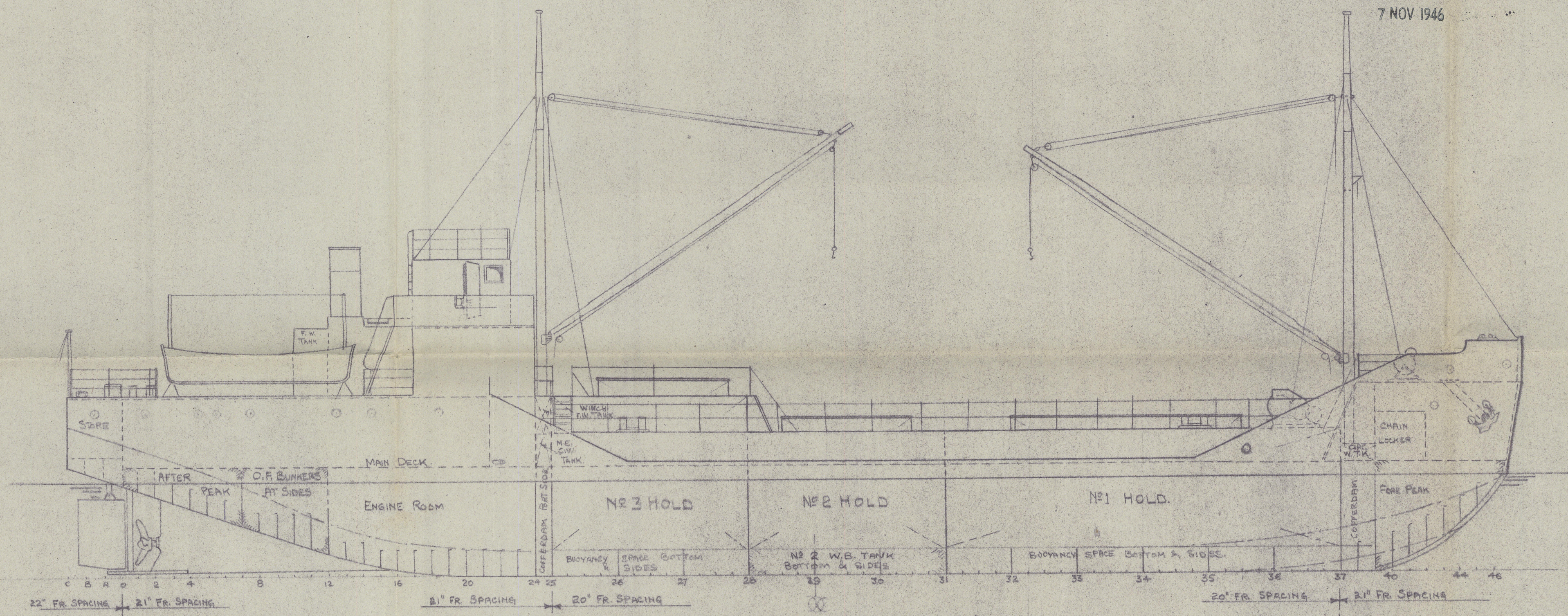
WATER BALLAST CAPACITY IS CALCULATED AT 35 CU. FT./TON.
FRESH AND CIRCULATING WATER TANKS ARE CALCULATED
AT 36 CU. FT./TON.

STORES

COMPARTMENT	FRAMES	LENGTH	CU. FT. GRAIN	CU. FT. BALE
AFT STORE	C-0	5'-6"	590	530
FORECASTLE	39-51	15'-3"	950	840
TOTAL STORES			1540	1370

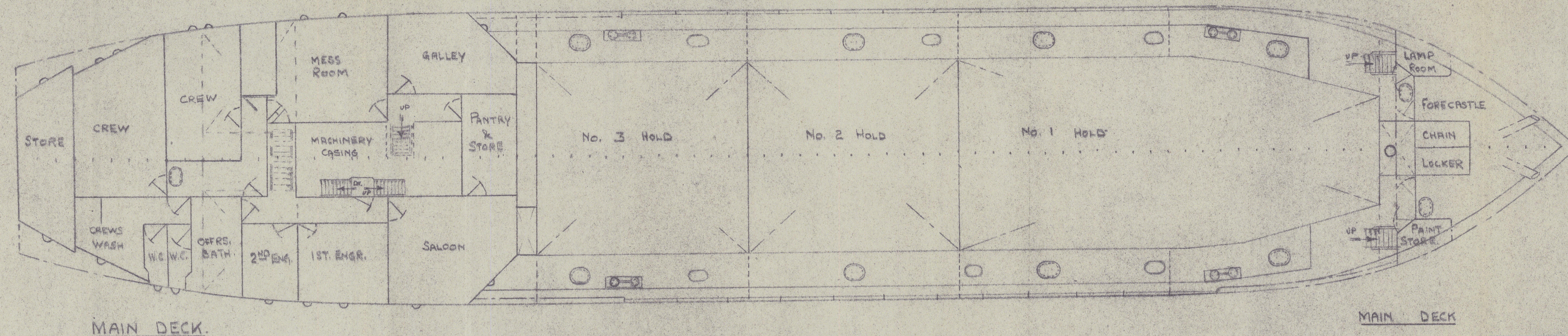
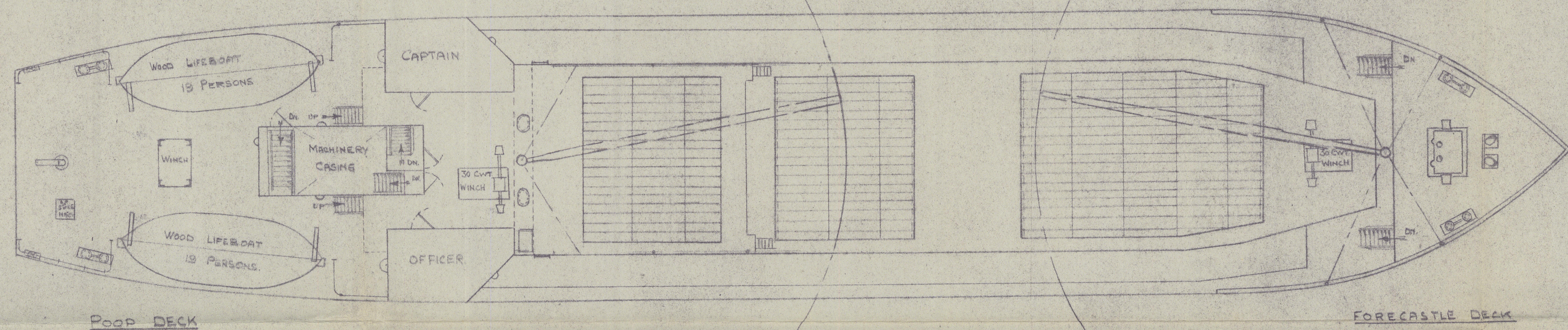
HOLD CAPACITIES

COMPARTMENT	FRAMES	LENGTH	CU. FT. GRAIN	CU. FT. BALE
No 1 HOLD	31-37	40'-0"	8042	6927
No 2 HOLD	28-31	20'-0"	4541	3743
No 3 HOLD	25-28	20'-0"	5584	4547
TOTALS			18167	15217



M.V. KAMUNI. CAPACITY PLAN

SCALE: 1/8" = 1 FOOT.



11.

Capacity Plan

$\frac{5}{2}$ KAMUNI.

7.11.46.

Capacity

S/m KAMUNI

7 NOV 1946

Boey



© 2021

Lloyd's Register
Foundation

0112 35-01243-0183