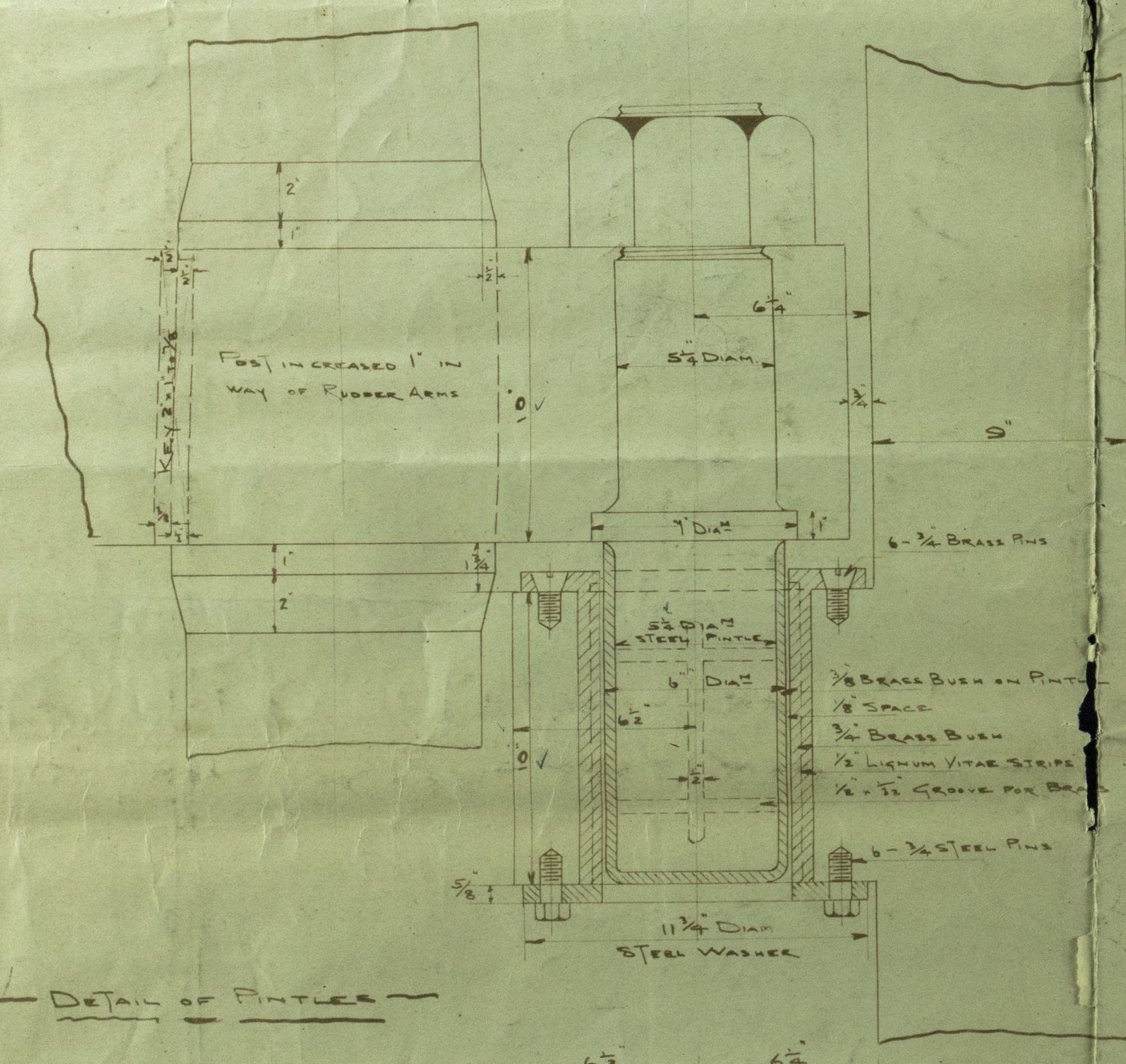
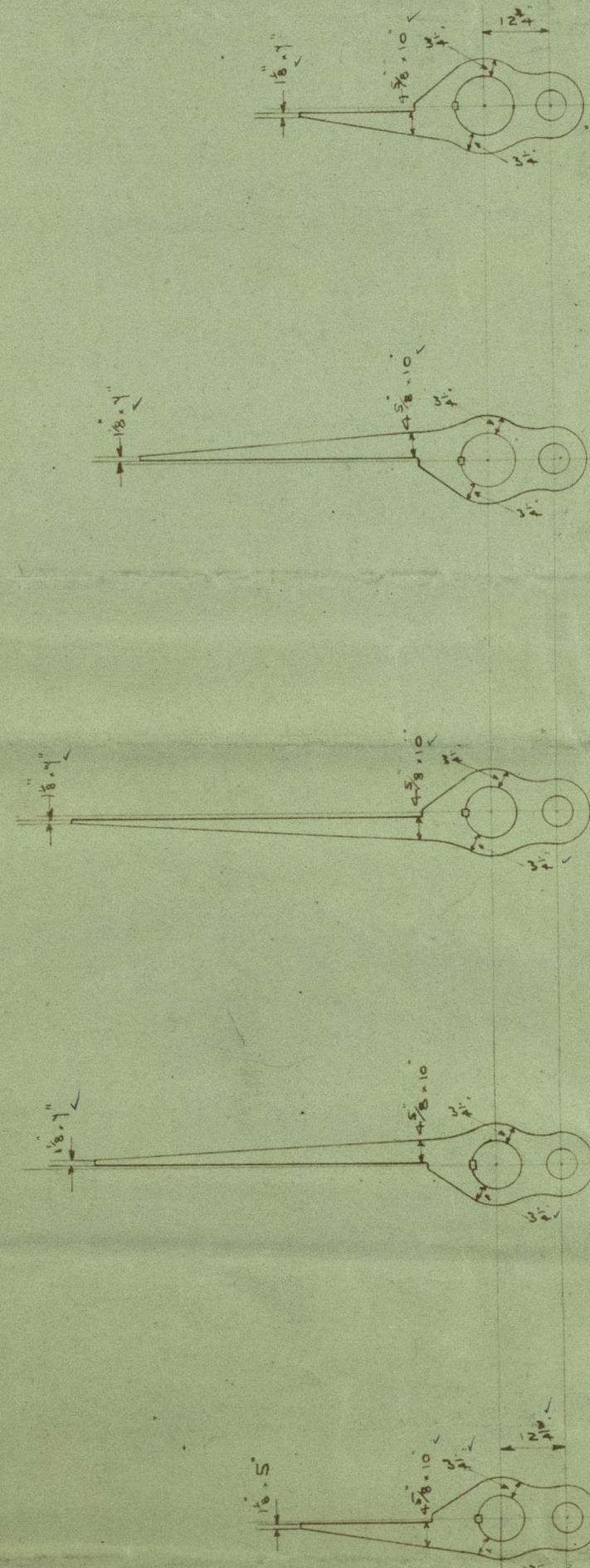
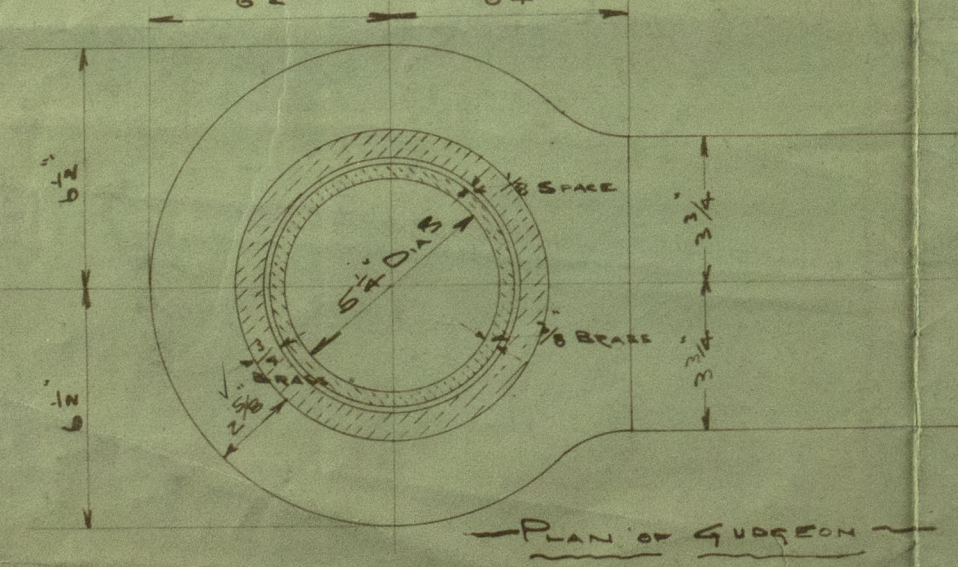


DETAIL OF LOCKING PINTLE

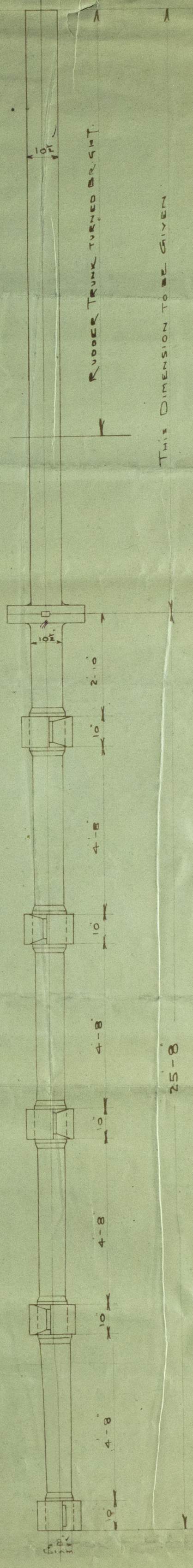


DETAIL OF PINTLE

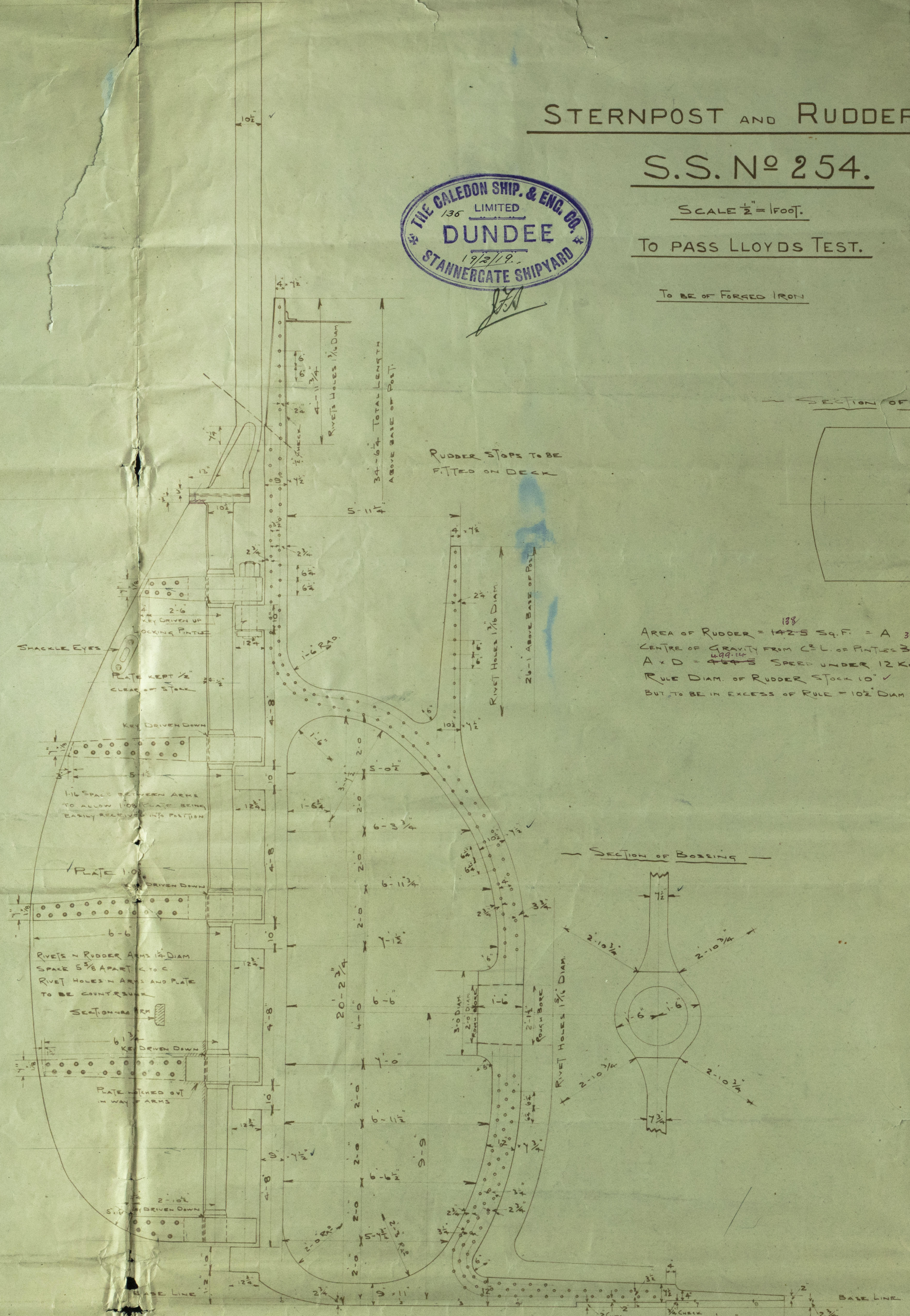


NOTES -

ARMS TO BE AT RIGHT ANGLES TO CENTRE LINE OF PINTLES, BORED OUT ACCURATELY AND CAREFULLY SHARPENED POINT AND KEYS. PINT TURNED FLAT IN QUARTER THAN THE ACTUAL TAPER CUT AT TOP EDGE OF ARMS. KEYS TO BE OF MILD STEEL. TAPER A TAPER OF 1/8 IN. 10. BOTH THESE AND THE KEY SEATS TO BE ACCURATELY MACHINED. KEYS ALL TO BE DRIVEN DOWN EXCEPT TOP ONE WHICH IS TO BE DRIVEN UP. RUBBER POST TO BE SMOOTH TURNED WHERE ARMS ARE SHARPENED ON.



THIS DIMENSION TO BE GIVEN



STERNPOST AND RUDDER.

S.S. No 254.

SCALE 1/2" = 1 FOOT.

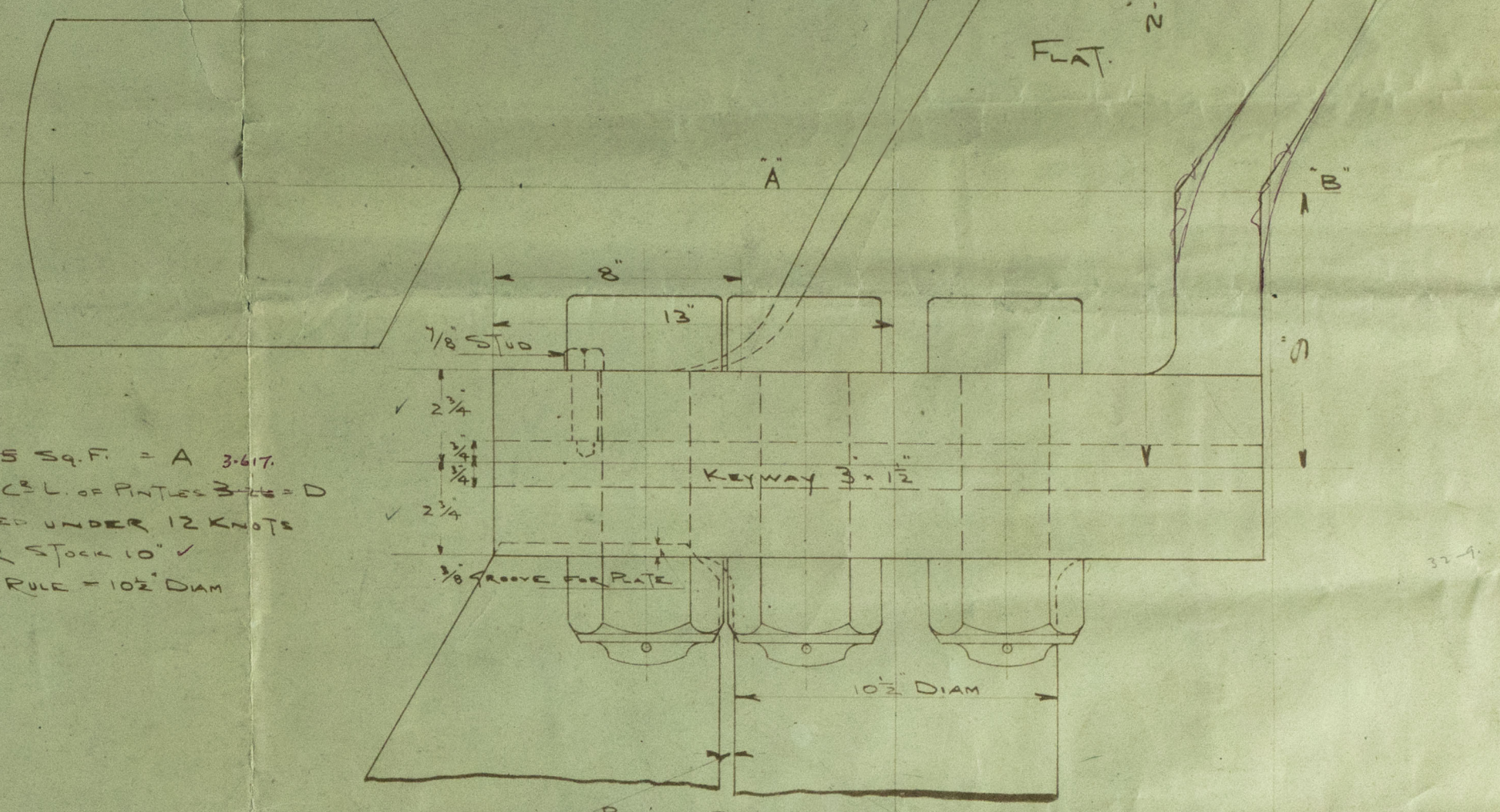
TO PASS LLOYD'S TEST.

TO BE OF FORGED IRON.

DETAIL OF RUDDER COUPLING

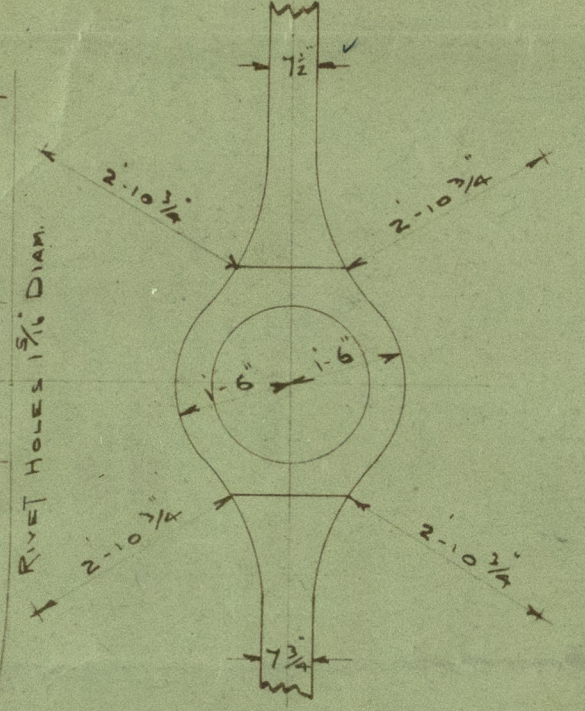
SCALE 1/2" = 1 FOOT

SECTION OF POST AT 'A-B'

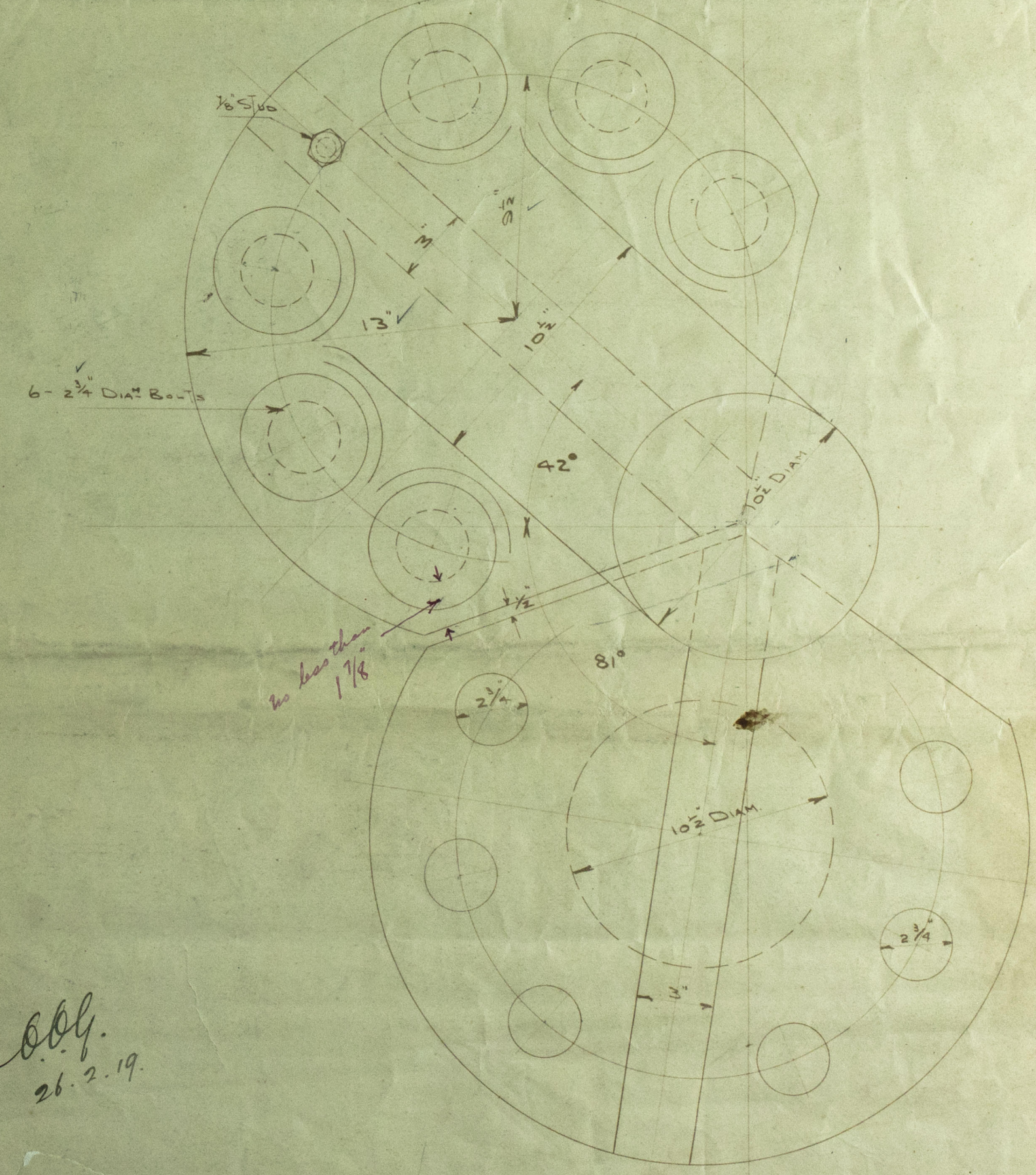
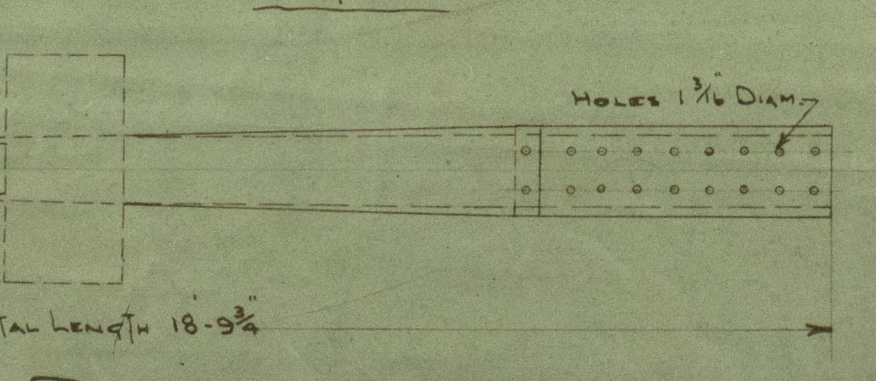
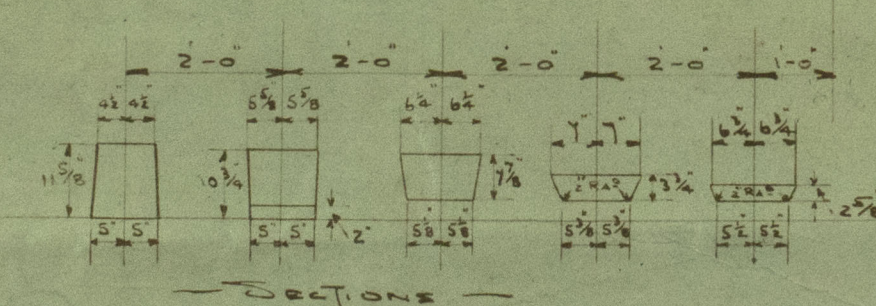


AREA OF RUDDER = 142.5 SQ. FT. = A 3647.
CENTRE OF GRAVITY FROM C.L. OF PINTLE 3.14' = D
A. D. = 4.44' = SPEED UNDER 12 KNOTS
RULE DIAM. OF RUDDER STOK 10"
BUT TO BE IN EXCESS OF RULE = 10 1/2" DIAM

SECTION OF BOLLING



ELEVATION



664.
26.2.19.

STERNPOST

6

RUDDER

254

LLOYD'S APPROVED

"Norwegian" *

Den. 8318

N/N Maria Elaine



© 2019

Lloyd's Register
Foundation