

B. C. SHIP**Lloyd's Register of Shipping.**Index No. _____
(For London Office only).**SURVEYS FOR FREEBOARD.**

21 JAN 1952

(CONDITIONS OF ASSIGNMENT.)

GRK REPORT NO 24564

Ship's Name **"FLYING FOAM"**

Official Number **137831**

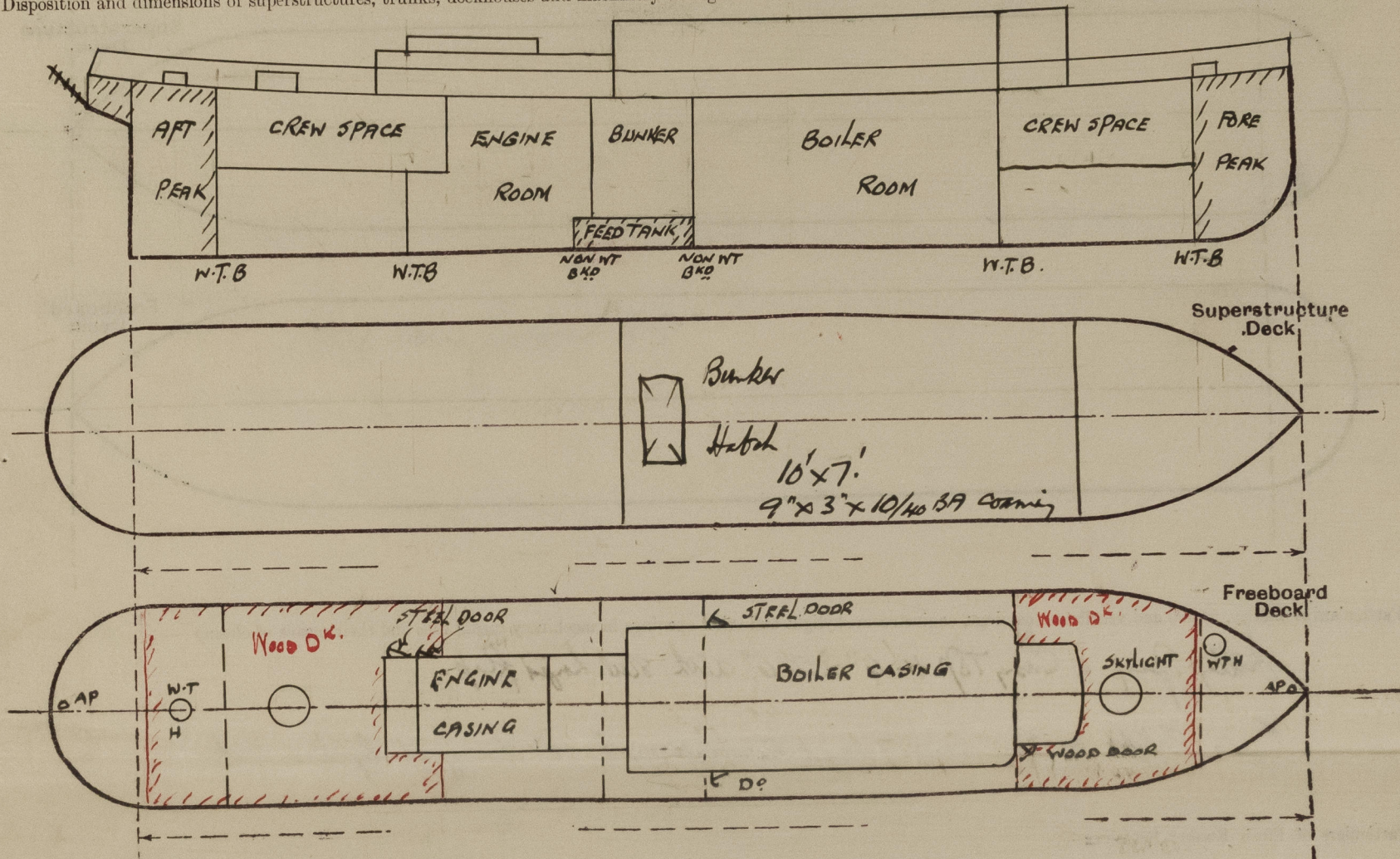
Nationality and Port of Registry **BRITISH**

Port of Survey **GREENOCK**

Surveyor's Signature *Jald*

Date of Survey **10/1/52**

Disposition and dimensions of superstructures, trunks, deckhouses and machinery casings to be inserted in the diagrams and tabular statement:—



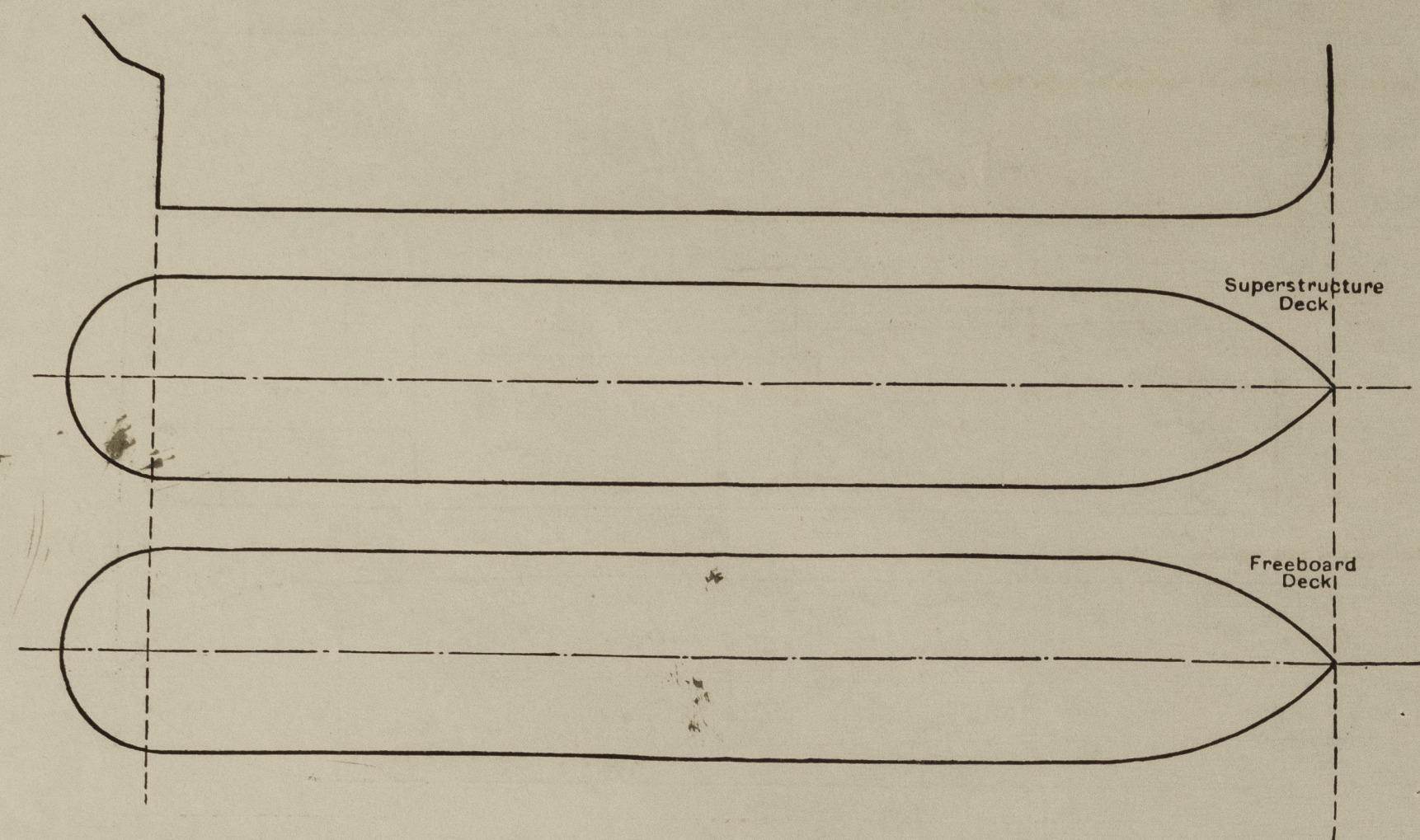
Particulars of Superstructures, Trunks, Casings, Deckhouses.

	Coaming	Plating	Stiffeners	Spacing	End Attachments of Stiffeners	Size of Openings	Height of Sills	Height of Casings
Poop Bulkhead	✓							
Raised Quarter Deck Bulkhead ...	✓							
Bridge, After Bulkhead	✓							
Bridge, Forward Bulkhead	✓							
Forecastle Bulkhead	✓							
Trunk, Aft	✓							
Trunk, Forward	✓							
Exposed Machinery Casings on Freeboard or Raised Quarter Decks	18" x 30	.25	3 x 2 1/2 x 5/20	2' 6" to 2' 9"	—	4' 6" x 2' 0" STEEL DOORS	24"	7'
Exposed Machinery Casings on Superstructure Decks	18" x 30	.25	3 x 2 1/2 x 5/20	2' 6" / 2' 9"	—	STEEL DOORS	24"	3'-9"
Machinery Casings within Superstructures not fitted with Class I Closing Appliances	18" x 30	.25	3 x 2 1/2 x 5/20	2' 6" to 2' 9"	—	WOOD DOORS	24"	7'
Deckhouses on Flush Deck Ships ...	18" x 30	.25	3 x 2 1/2 x 5/20	2' 6" to 2' 9"	—	WOOD DOORS	24"	7'

Particulars of Closing Appliances (state if capable of being manipulated from both sides).

Poop Bulkhead	
Raised Quarter Deck Bulkhead ...	
Bridge, After Bulkhead	
Bridge, Forward Bulkhead	
Forecastle Bulkhead	
Exposed Machinery Casings on Freeboard or Raised Quarter Decks	Steel door (P.S.I.S) capable of being opened from both sides. St Steel door at entrance ✓
Exposed Machinery Casings on Superstructure Decks	STEEL DOOR. CAPABLE OF BEING OPERATED FROM BOTH SIDES. ENG. RM. ENTRANCE.
Machinery Casings within Superstructures not fitted with Class I Closing Appliances	STEEL door (P.S.I.S) capable of being opened from both sides. Low space for door.
Deckhouses on Flush Deck Ships ...	

The following diagrams should be used to indicate the positions of cargo and coaling hatchways, gangway, cargo and coaling ports, ventilators, companionways, etc., which would affect the seaworthiness of the ship:—



Adly Spec in Com Tsp 4' 6" x 2' 6" with steel lined flap. ✓

Enje flygt m EnjeCory. 7 haged steel flaps wöel 12" dän freid lyfts 2 each

NONE

Particulars of Companionways:—

Entrance to crew space forward enclosed in steel deckhouse	Hinged wood door. O.B.S. 24" Sill.
" " " " aft " " "	Hinged steel door. O.B.S. 24" Sill.

106" dia B Gun Space Aft. Cam; 24" Lgh : 8th fitted with sand ply & Cam Core
10 "

1 2" dia R Iron Pipe } 12' R Pipe Road plugs ✓
1 2 " " Aft " }

21 JAN 1952

204" dia (1 P. 1 S) with stem Valves ship's side ✓
There are no unbound discharges from tanks below the freeboard deck. ✓

None below ground dK ✓

Boat DK 2 Rails, 3 ft high.

Particulars of Gangways, Lifelines, etc. :—

Particulars of Freeing Arrangements.						
	Length of Bulwark	Height of Bulwark	Size of Freeing Ports	Number each side	Area each side	Rule area each side
After Well ... } ...	Total Length of Ship	3' 0"	30" x 12"	5	12.5 ft ² ✓	1150 ft ²
Forward Well ... } ...						
State position of each freeing port ... { After Well :— (F. and A. position and height above deck edge) { Forward Well :—						
State whether the freeing ports are fitted with shutters, bars, or rails, and give particulars of such :— 4 with shutters, 1 with bar /						
Additional area where sheer is less than standard.						

PARTICULARS OF PROTECTION TO OPENINGS, ETC.

HATCHWAYS ON FREEBOARD AND SUPERSTRUCTURE DECKS.									
Description of Hatchway		FORE P ⁴	BUNKER						
Dimensions of Hatchway		AFT "	HATCH						
COAMINGS	Height above Deck	18"	9"						
	Thickness	8/10	10/40						
	Stiffeners								
	Brackets, Stays								
HATCH BEAMS	Number								
	Spacing								
	Scantling and Sketch								
FORE AND AFTERS	Bearing Surface								
	Number								
	Spacing								
	Unsupported Lengths								
HATCH COVERS	Material	STEEL	WOOD						
	Thickness	8/10	2 1/2"						
	How fitted	W.T.	FORE & AFT						
	Bearing Surface	3"	3"						
Spacing of Cleats		Scanned by 25"							
Number of Tarpaulins		2							
<p>*Are wood fore and afters steel shod at all bearing surfaces? <input checked="" type="checkbox"/></p> <p>Are battens and wedges efficient and in good condition? <input checked="" type="checkbox"/></p> <p>Are tarpaulins in good condition and in accordance with rule requirements? <input checked="" type="checkbox"/></p> <p>Are lashings provided in accordance with rule requirements? <input checked="" type="checkbox"/></p>									

Particulars of any special features:—

SKYLIGHTS TO CREW SPACES FOR⁰ x AFT. :- 3-3" DIA x 1-2" HIGH x 10" 40". 4-10" FIXED LIGHTS IN TOP OF SUBSTANTIAL THICKNESS. No DEADLIGHTS. provided with portable steel covers.

100 80
115 3

Endorsement at first survey and at surveys for renewal of Certificate:—

The fittings and appliances are in accordance with the particulars shown on this form (or as now modified) and are in good condition.



© 2021

Lloyd's Register Foundation