

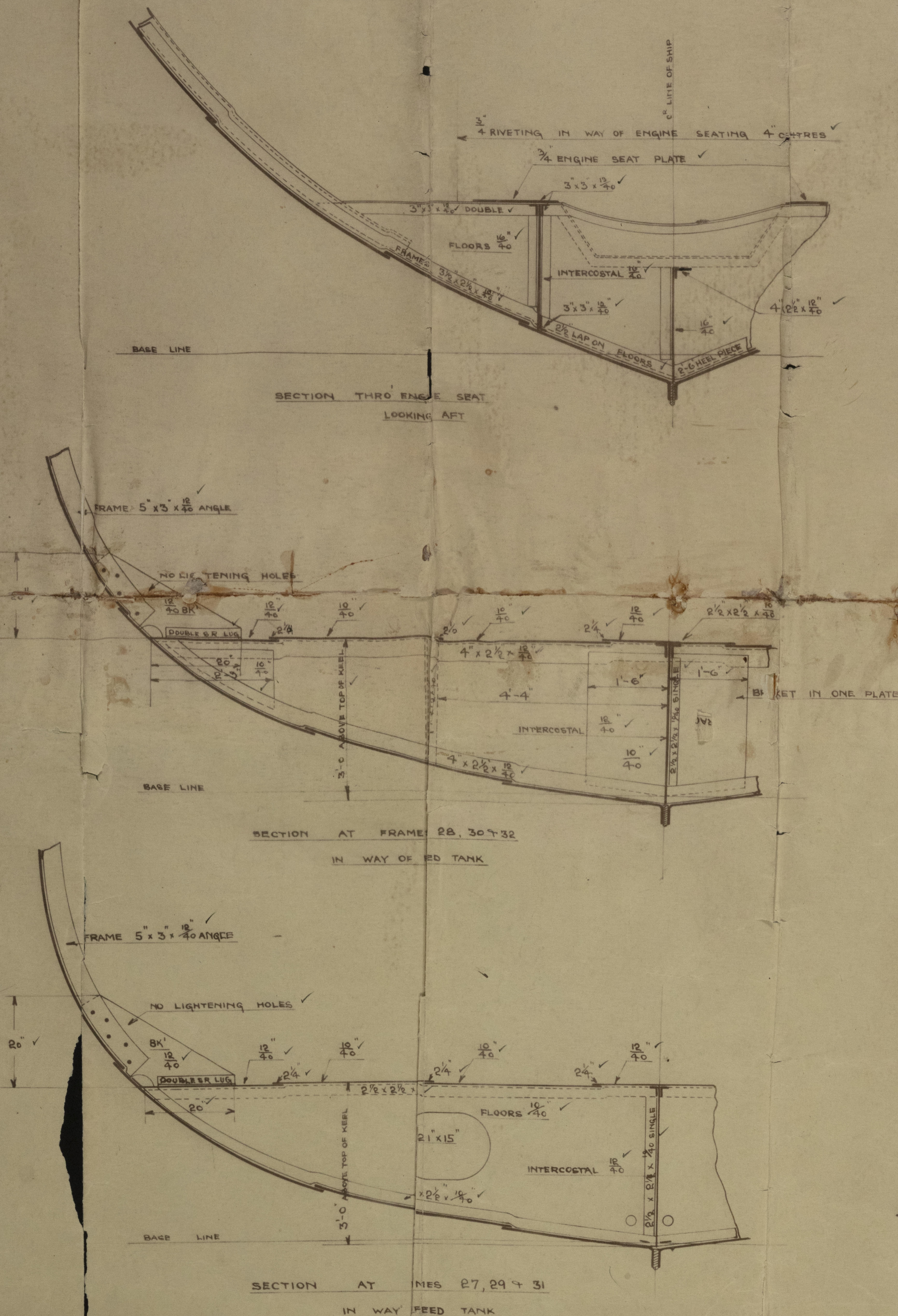
YARD N^o ~~214~~ ^{219.}

MIDSHIP SECTION.
STEEL SREW TUG.

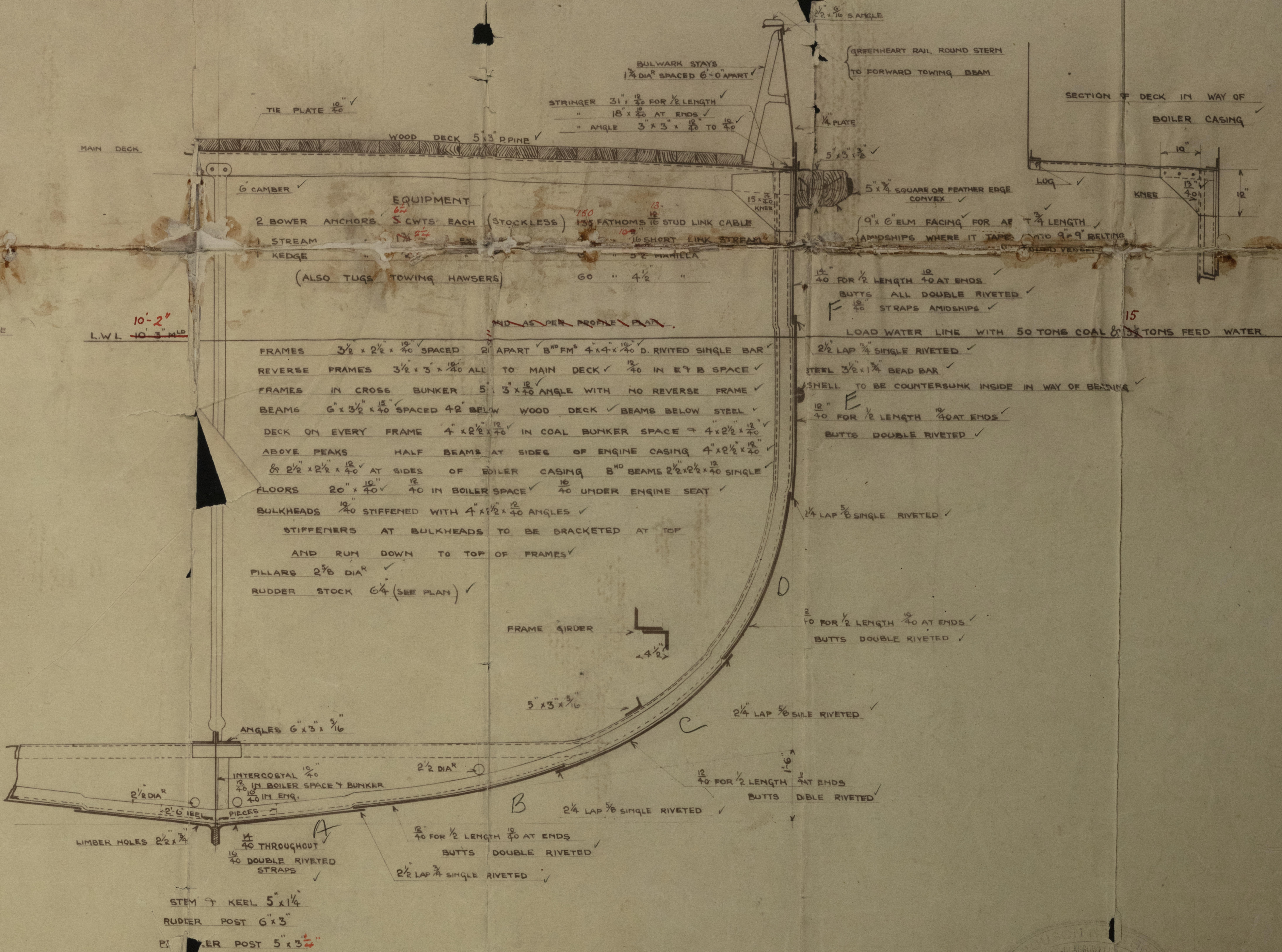
DIMENSIONS ~~110~~^{115'} BP 24'-0" x 13'-6" MLD

CLASS BS TWING PURPOSES

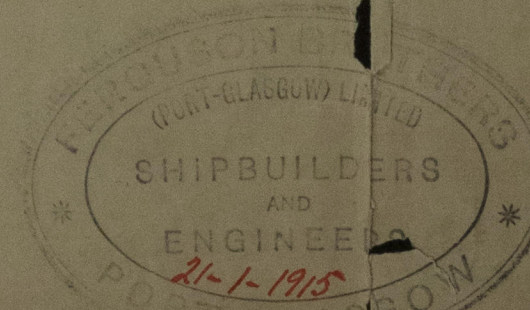
SCALE $\frac{3}{4}$ " = ONE FOOT



FERCUSON BROS.
(PORT-CLASCOW) LTD.
SHIPBUILDERS & ENGINEERS



219 + 220



~~214~~ 215
4
D.M.B.T.W.
~~20-0-1914~~
21-1-1915

FERGUSON BROTHERS (PORT-GLASGOW) Ltd.

ENCLOSURE TO

British Corporation

Ferguson Brothers
N^o 219-20

Midship Section
115' x 24' x 13'-6"

T.C. 24-2-15

n/n Don ENRIQUE "

Lying Loam "

Lying Spray

011197-011206-0001

© 2021



Lloyd's Register
Foundation