

PLAN No 14.

No

# RUDDER.

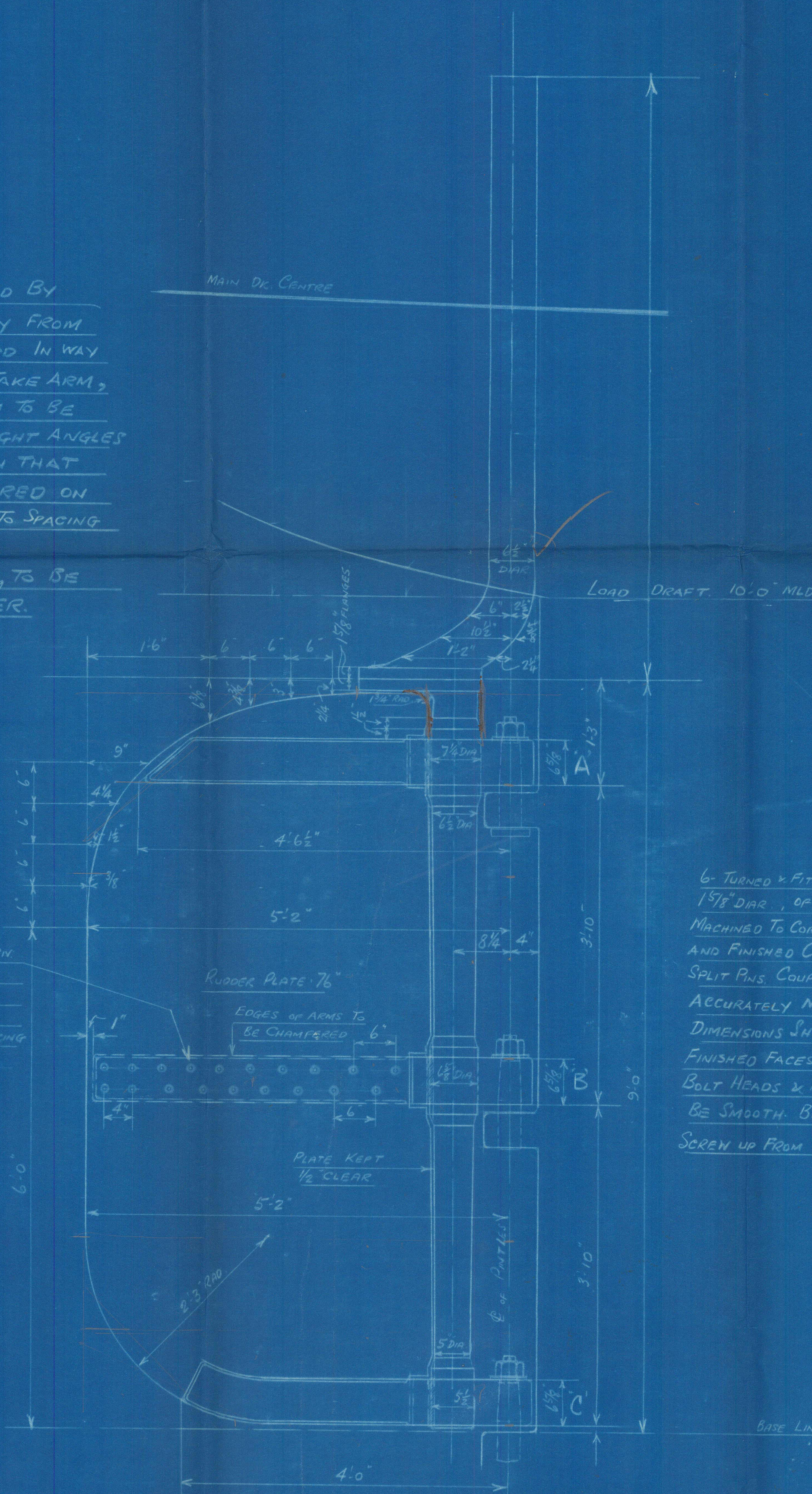
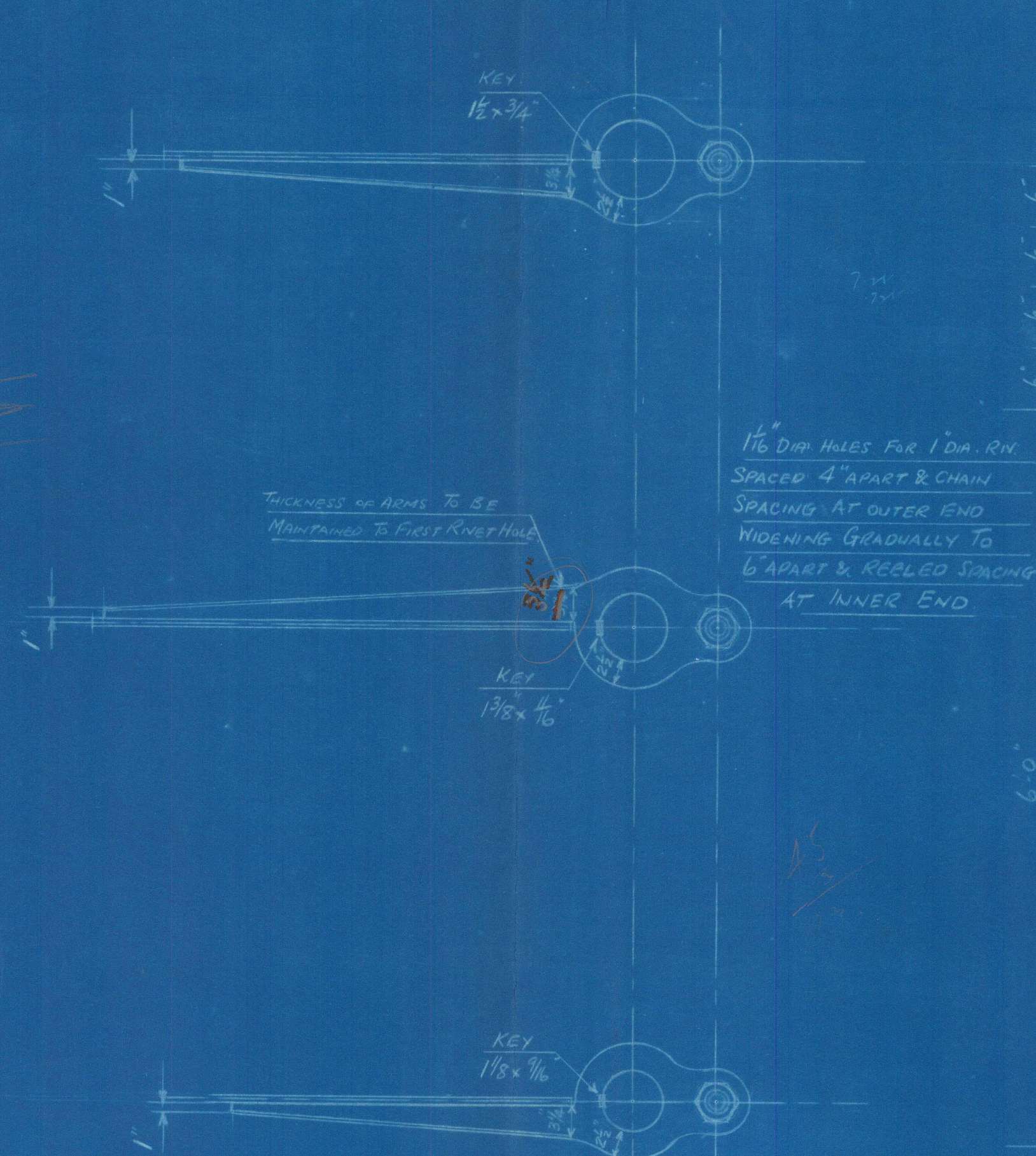
SCALE 1" = 1 FOOT

VESSEL: 200'-0" x 34'-0" x 11'-6" MLD.

CLASS: BRITISH CORPORATION B.S.X. (WITH FREEBOARD)

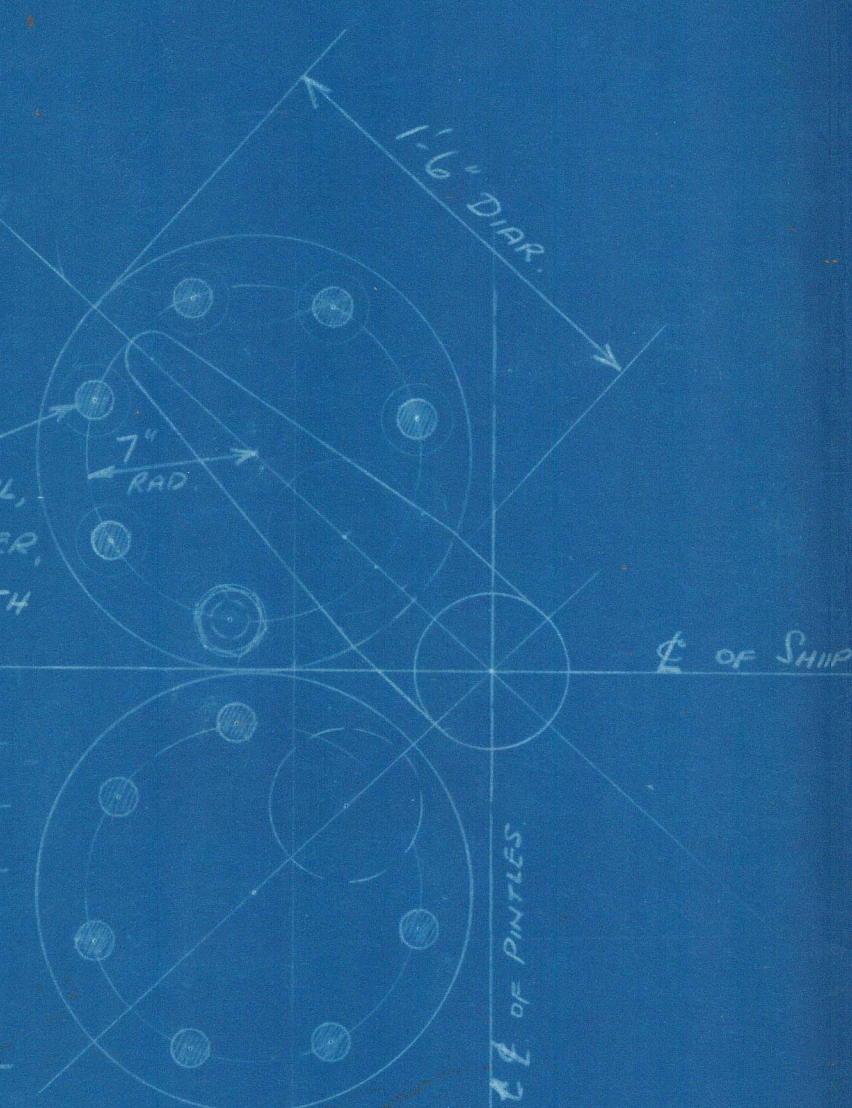
SPEED OF SHIP 13½ KNOTS.

NOTES: RUDDER FRAME & STOCK TO BE OF FORGED STEEL, TESTED & PASSED BY BRITISH CORPORATION AND BOARD OF TRADE. MAINPIECE TO TAPER UNIFORMLY FROM 6½" AT TOP ARM TO 5½" AT HEEL. DIAMETER OF MAINPIECE TO BE INCREASED IN WAY OF EACH ARM TO DIMENSIONS SHOWN, & MAINPIECE TURNED PARALLEL TO TAKE ARM, AND KEYWAY CUT. (SEE DETAILS). KEYS OF MILD STEEL; THAT IN TOP ARM TO BE DRIVEN UPWARDS, THE OTHERS DOWNWARDS. ARMS TO BE FITTED AT RIGHT ANGLES TO C.L. OF MAINPIECE & SHRUNK & KEVED TO SAME. CARE TO BE TAKEN THAT PINTLES ARE IN PERFECT ALIGNMENT. EDGES OF ARMS TO BE CHAMFERED ON SIDE AWAY FROM PLATE. 1 11/16" DIA. HOLES FOR 1" DIA RIVETS TO BE BORED TO SPACING SHOWN AND COUNTERSUNK ON FACE AWAY FROM RUDDER PLATE. FORGED STEEL PINTLES, COUPLING BOLTS COMPLETE WITH NUTS AND SPLIT PINS, TO BE SUPPLIED WITH RUDDER. RUDDER PLATE SUPPLIED BY SHIPBUILDER. PARTS TINTED RED TO BE MACHINED BY CONTRACTOR.



6 TURNED & FITTED BOLTS 1 5/8" DIA., OF FORGED STEEL, MACHINED TO CORRECT DIAMETER AND FINISHED COMPLETE WITH SPLIT PINS COUPLING TO BE ACCURATELY MACHINED TO DIMENSIONS SHOWN. THE FINISHED FACES OF THE BOLT HEADS & NUTS TO BE SMOOTH. BOLTS TO BE SCREW UP FROM UNDERSIDE.

DETAIL OF COUPLING  
SCALE 1/2" = 1 FOOT



Approved *[Signature]*  
21. 2. 23

913-15  
2.1875



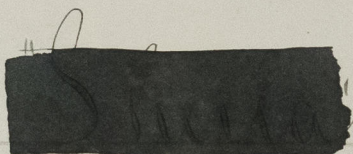
5

Rudder Plan.

Harland Wolff. Ltd.

Nº 8726

21-2-29.



"Lochness"

6/2/29

Harland Wolff



© 2021

Lloyd's Register  
Foundation