

1 - JUN 1954

Index No.

(For London Office only.)

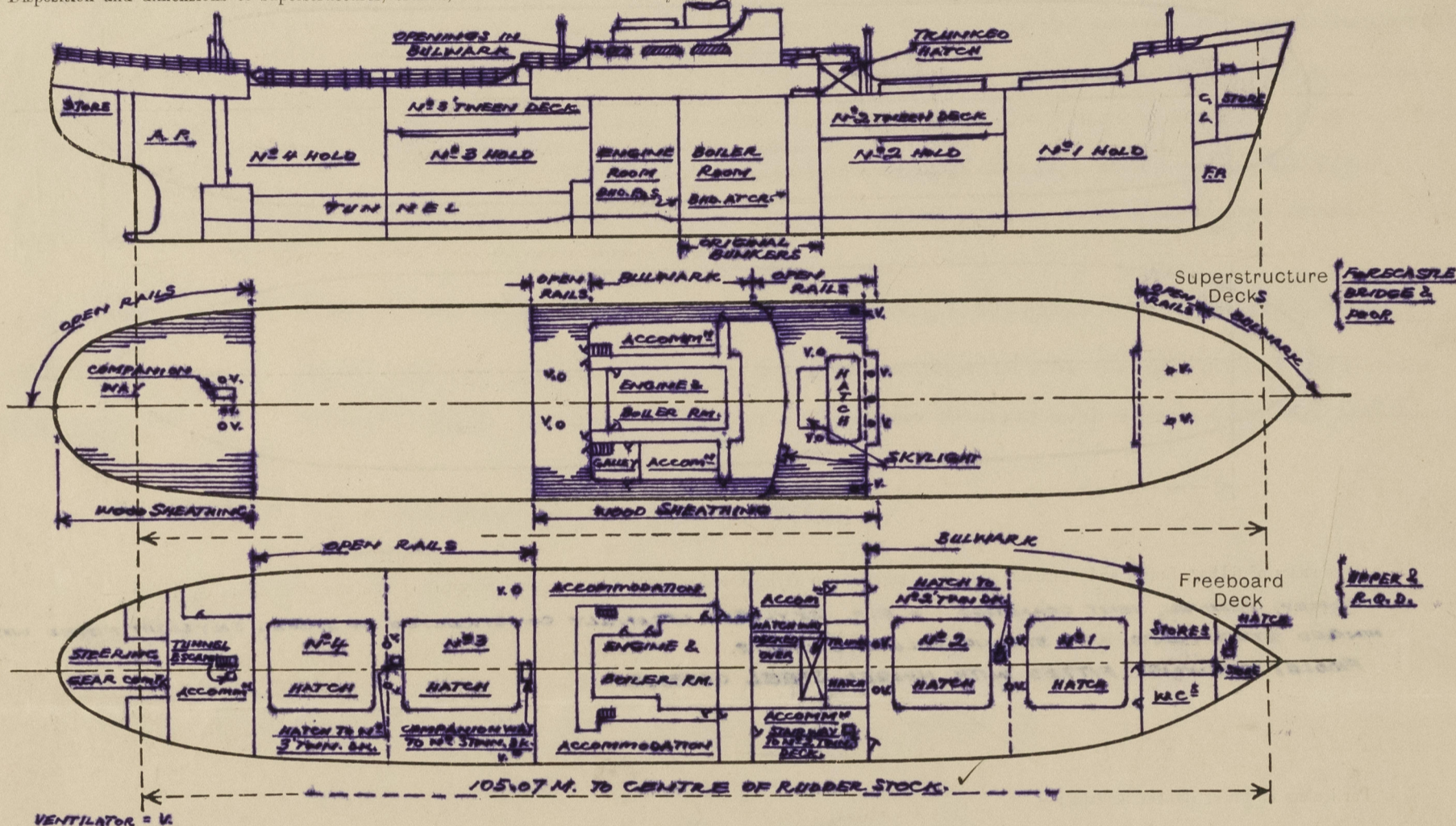
Lloyd's Register of Shipping.

SURVEYS FOR FREEBOARD.

(CONDITIONS OF ASSIGNMENT.)

Ship's Name 'ALMIRANTE LOBO' Port of Survey CADIZ.
 Official Number — Surveyor's Signature J. H. S. Russell
 Nationality and Port of Registry SPANISH - NOT REGISTERED Date of Survey DURING CONSTRUCTION.

Disposition and dimensions of superstructures, trunks, deckhouses and machinery casings to be inserted in the diagrams and tabular statement:—



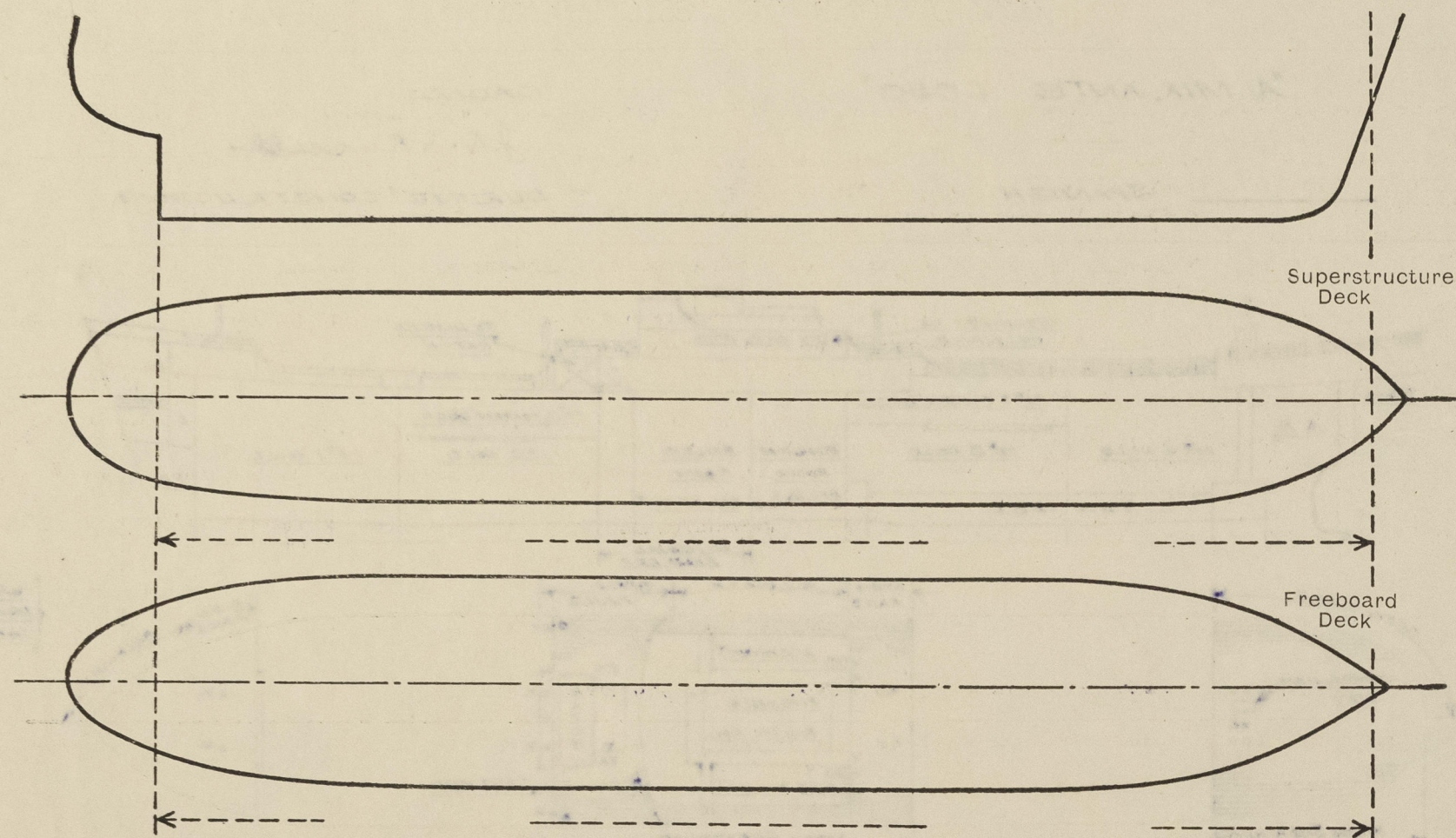
Particulars of Superstructures, Trunks, Casings, Deckhouses.									
	Coaming mm.	Plating mm.	Stiffeners mm.	Spacing mm.	End Attachments of Stiffeners	Size of Openings mm.	Height of Sills mm.	Height of Casings mm.	
Poop Bulkhead ...	10 ✓	10 ✓	328 x 95 x 12.8 A	950 ✓	BRACKETS TOP & BOTTOM.	NONE ✓	—	2130 ✓	
Raised Quarter Deck Bulkhead ...	7 ✓	7 ✓	120 x 80 x 10 O.A.	935 To 1060 ✓	BRACKETS TOP & BOTTOM.	NONE ✓	—	2360 ✓	
Bridge, After Bulkhead ...	12 ✓	12 ✓	305 x 88.9 x 13.78 A	935 To 1060 ✓	BRACKETS TOP & BOTTOM.	20/500 x 700 ✓	610 ✓	2360 ✓	
Forecastle Bulkhead ...	8 ✓	8 ✓	127 x 75 x 10.7 O.A.	1070 ✓	BRACKETS TOP & BOTTOM.	20/500 x 700 ✓	500 ✓	2300 ✓	
Trunk, Aft ...									
Trunk, Forward ...									
Exposed Machinery Casings on Freeboard or Raised Quarter Decks ...									
Exposed Machinery Casings on Superstructure Decks ...									
Machinery Casings within Superstructures not fitted with Class I Closing Appliances ...	10 ✓	8 ✓	90 x 70 x 10 O.A.	840 ✓	BRACKET AT TOP	20/650 x 600 ✓	230 ✓	—	
Deckhouse on Upper Deck Ships ...	7 ✓	6.5 ✓	75 x 75 x 8 O.A.	635 To 880 ✓	BRACKET AT TOP & BOTTOM.	50/1500 x 600 20/1350 x 600 ✓	460 460 ✓	2210 ✓	

Particulars of Closing Appliances (state if capable of being manipulated from both sides).

Poop Bulkhead ...	NO OPENINGS. ✓
Raised Quarter Deck Bulkhead ...	
Bridge, After Bulkhead ...	NO OPENINGS. ✓
Bridge, Forward Bulkhead ...	2-HINGED STEEL W.T. DOORS OPERATED FROM BOTH SIDES (CLASS I). ✓
Forecastle Bulkhead ...	2-HINGED STEEL W.T. DOORS OPERATED FROM BOTH SIDES (CLASS I). ✓
Exposed Machinery Casings on Freeboard or Raised Quarter Decks ...	
Exposed Machinery Casings on Superstructure Decks ...	
Machinery Casings within Superstructures not fitted with Class I Closing Appliances ...	HINGED STEEL DOORS OPERATED FROM BOTH SIDES. ✓
Deckhouse on Upper Deck Ships ...	HINGED STEEL AND HARDWOOD DOORS (50mm) OPERATED FROM BOTH SIDES. ✓

PARTICULARS OF PROTECTION TO OPENINGS, ETC.

The following diagrams should be used to indicate the positions of cargo and coaling hatchways, gangway, cargo and coaling ports, ventilators, companionways, etc., which would affect the seaworthiness of the ship:—



Particulars of fiddle, funnel and ventilator coamings, engine room skylight and other openings in machinery casing tops and their means of closing:—

FIDLEY, FUNNEL, VENT COAMINGS & E.R. SKYLIGHT STRONGLY CONSTRUCTED OF STEEL. SKYLIGHT FITTED WITH WINGED STEEL FLAPS WITH STRONG BULLSEYE LIGHTS.
FIDLEY OPENINGS FITTED WITH HINGED STEEL COVERS.

Particulars of Flush Bunker Scuttles:—

NONE FITTED.

Particulars of Companionways:—

IN STRONG STEEL DECKHOUSE ON BRIDGE DECK GIVING ACCESS TO BRIDGE TWEEN DECKS, OPENINGS 2 @ 1500 x 600 mm. SILL 460 mm, CLOSED BY STRONG HINGED WOOD DOORS OPERATED FROM BOTH SIDES.

IN STRONG STEEL DECKHOUSE ON BRIDGE DECK GIVING ACCESS TO BRIDGE TWEEN DECKS, OPENINGS 2 @ 1500 x 600 mm, SILL 460 mm, CLOSED BY STRONG HINGED WOOD DOORS OPERATED FROM BOTH SIDES.

IN STRONG STEEL COMPANIONWAY ON RAISED QUARTER DECK GIVING ACCESS TO NO. 3 TWEEN DECK, OPENING 1230 x 650 mm, SILL 460 mm, CLOSED BY A STRONG HINGED STEEL DOOR OPERATED FROM BOTH SIDES.

IN STRONG STEEL COMPANIONWAY ON POOP DECK GIVING ACCESS TO POOP SPACE, OPENING 1300 x 540 mm, SILL 460 mm, CLOSED BY A STRONG HINGED STEEL DOOR OPERATED FROM BOTH SIDES.

Particulars of Ventilators in exposed positions on freeboard and superstructure decks:—

FORECASTLE DECK.

2-600 mm. DIA. DERRICK POST VENTS TO NO. 1 HOLD COAMINGS 500 x 12 mm.

UPPER DECK.

2-760 mm. DIA. COAL VENTS TO NO. 1 HOLD COAMINGS 910 x 12 mm.

2-760 mm. DIA. " " NO. 2 & 3 TWEEN DECK COAMINGS 500 x 12 mm.

BRIDGE DECK.

2-600 mm. DIA. DERRICK POST VENTS TO NO. 3 HOLD & TUNNEL COAMINGS 1100 x 12 mm.

2-300 mm. DIA. MUSHROOM VENTS TO ACCOMMODATION COAMINGS 500 x 10 mm.

2-560 mm. " " " " " " 760 x 10 mm.

VENTS MARKED THUS STAYED.

RAISED QUARTER DECK.

2-750 mm. DIA. COAL VENTS TO NO. 3 & 4 HOLDS & NO. 3 TWEEN DECK COAMINGS 910 x 12 mm.

2-560 mm. DIA. MUSH ROOM VENTS TO NO. 3 TWEEN DECK COAMINGS 910 x 10 mm.

POOP DECK.

2-600 mm. DIA. DERRICK POST VENTS TO NO. 4 HOLD COAMINGS 1050 x 12 mm.

1-130 mm. DIA. COAL VENT TO TUNNEL ESCAPE COAMING 760 x 8 mm.

NOTE

MUSHROOM VENTS FITTED WITH SCREENED TOPS RUBBER JOINTED. REMAINING VENTS, OTHER THAN DERRICK POSTS, PROVIDED WITH WOOD PLUGS & CANVAS COVERS FOR CLOSING.

Particulars of Air Pipes in exposed positions on freeboard, raised quarter, or superstructure decks:—

FORECASTLE DECK.

1-64 mm. DIA. TO FORE PEAK TANK 460 mm. HIGH.

1-76 mm. " " NO. 1 D.B. TANK 460 mm. " "

UPPER DECK.

2-76 mm. DIA. TO NO. 2 D.B. TANK 915 mm. HIGH.

RAISED QUARTER DECK.

1-76 mm. DIA. TO NO. 3 D.B. TANK 915 mm. HIGH.

POOP DECK.

1-64 mm. DIA. TO AFTER PEAK TANK 460 mm. HIGH.

1-64 mm. " " TRANSOM SPACE 460 mm. " "

BRIDGE DECK.

2-70 mm. DIA. TO NO. 2 D.B. TANK 460 mm. HIGH.

2-64 mm. " " COFFERDAM FRS. 42-44 460 mm. " "

2-64 mm. " " NO. 3 D.B. TANK 460 mm. " "

2-51 mm. " " COFFERDAM FRS. 37-38 460 mm. " "

2-64 mm. " " NO. 4 D.B. TANK 460 mm. " "

2-51 mm. " " COFFERDAM FRS. 30-31 460 mm. " "

2-76 mm. " " NO. 5 D.B. TANK 460 mm. " "

NOTE

AIR PIPES TO OIL FUEL TANKS FITTED WITH WIRE GAUZE DIAPHRAGMS & PROVIDED WITH CANVAS COVERS. REMAINDER PROVIDED WITH WOOD PLUGS FOR CLOSING.

Particulars of Gangway Cargo and Coaling Ports:—

NONE FITTED.

1- JUN 1954

Particulars of Scuppers and Sanitary Discharge Pipes:—

SCUPPERS FROM WEATHER DECK, EXCEPT BOAT & BRIDGE DECKS IN WAY OF DECKHOUSE, LED OVERBOARD ABOVE FREEBOARD DECK THROUGH STRINGER ANGLE AND SHEER-STRAKE.
SCUPPERS FROM BOAT & BRIDGE DECKS ALSO BRIDGE TWEEN DECK SPACES 30 TO 64 mm. DIA. LED OVERBOARD BELOW FREEBOARD DECK IN R.A. & BUNKER SPACE WITH 1-70 mm. & 75 mm. DIA. (P) AND 3-75 mm. DIA. (S) BRASS AUTOMATIC N.R. VALVES ON SHELL.
SCUPPERS FROM INSIDE POOP SPACE 50 mm. DIA. LED OVERBOARD BELOW FREEBOARD DECK IN NO. 4 HOLD WITH 1-75 mm. DIA. (P) AND 1-50 mm. DIA. (S) BRASS AUTOMATIC N.R. VALVES ON SHELL.
SCUPPERS FROM INSIDE STEERING GEAR COMPT. 32 mm. DIA. LED OVERBOARD BELOW FREEBOARD IN TRANSOM SPACE WITH 1-50 mm. DIA. BRASS AUTOMATIC N.R. VALVE ON SHELL (STARBOARD).
SCUPPER FROM INSIDE PALE SPACE LED OVERBOARD BELOW FREEBOARD DECK IN NO. 1 HOLD WITH 1-64 mm. DIA. BRASS AUTOMATIC N.R. VALVE ON SHELL (STARBOARD).
SCUPPERS FROM NO. 2 AND 3 TWEEN DECKS 50 mm. DIA. LED TO HOLD BILGES.
SANITARY DISCHARGES FROM FORECASTLE W.C. LED OVERBOARD BELOW FREEBOARD DECK IN NO. 1 HOLD & CHAIN LOCKER WITH 4-100 mm. DIA. BRASS AUTOMATIC N.R. VALVES ON SHELL (STARBOARD).
SANITARY DISCHARGES FROM BRIDGE ACCOMMODATION LED OVERBOARD BELOW FREEBOARD DECK IN R.A. & BUNKER SPACE WITH 1-50 mm. & 2-100 mm. DIA. (P) AND 4-100 mm. DIA. (S) BRASS AUTOMATIC N.R. VALVES ON SHELL.
SANITARY DISCHARGES FROM POOP W.C. ETC. LED OVERBOARD BELOW FREEBOARD DECK IN NO. 4 HOLD WITH 1-100 mm. DIA. BRASS AUTOMATIC N.R. VALVE ON SHELL (PORT).
ITEMS MARKED THUS FITTED WITH 2 BRASS/AUTOMATIC NON-RETURN VALVES, ONE AT SHIP'S SIDE AND THE UPPER ACCESSIBLE UNDER SERVICE CONDITIONS.

Particulars of Side Scuttles:—

IN SIDES OF FORECASTLE 4-250 mm. DIA. OPENING GUNMETAL SIDE SCUTTLES (R.S.) WITH HINGED CAST STEEL DEADLIGHTS.

INSIDES OF BRIDGE 16 PORT & 15 STARBOARD. 250 mm. DIA. OPENING GUNMETAL SIDE SCUTTLES WITH HINGED CAST STEEL DEADLIGHTS.

IN SIDES OF POOP 8 PORT & 7 STARBOARD. 250 mm. DIA. OPENING GUNMETAL SIDE SCUTTLES WITH HINGED CAST STEEL DEADLIGHTS.

ALL SIDE SCUTTLES ABOVE FREEBOARD DECK.

Vertical distance of Sill of lowest Side Scuttle above top of keel. NONE BELOW FREEBOARD DECK.

Particulars of Guard Rails:—

FORECASTLE DECK	UPPER DECK	BRIDGE DECK	RAISED QUARTER DECK	POOP DECK
HALF LENGTH BULWARK 1070 mm. HIGH. GUN. WITH 153 mm. DIA. RAIL BAR AND 8 mm. FLANGED PLATE STAYS 2000 mm. APART. 1100 mm. APART.	BULWARK 1220 mm. HIGH. GUN. WITH 153 mm. DIA. RAIL BAR AND 8 mm. FLANGED PLATE STAYS 2000 mm. APART.	BULWARK 1040 mm. HIGH. 9 mm. WITH WOOD RAIL BAR & 8 mm. FLANGED PLATE STAYS 1300 mm. APART.	3 GUARDRAILS & STANCHIONS 980 mm. HIGH & 2300 mm. APART WITH SHORE STAY 1150 mm. APART. TOP RAIL 130 x 65 x 7 mm. S.A. (GUARD RAILS PORTABLE)	3 GUARDRAILS & STANCHIONS 1100 mm. HIGH & 1200 mm. APART TOP RAIL 130 x 65 x 7 mm. S.A.

Particulars of Gangways, Lifelines, etc.:—

WIRE LIFELINES PROVIDED FOR FORWARD WELL AND RAISED QUARTER DECK P & S ATTACHED TO PERMANENT EYEPLATES.

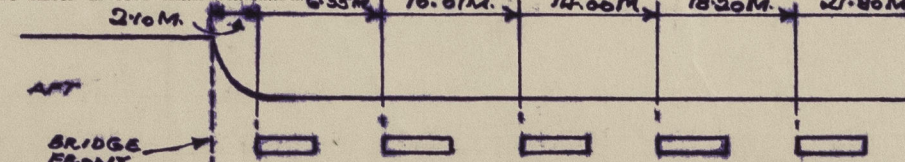
Particulars of Freeing Arrangements.

	Length of Bulwark	Height of Bulwark	Size of Freeing Ports	Number each side	Area each side	Rule area each side
After Well ...						
Forward Well ...	36.3675 M.	1220 mm.	1200 x 235 mm.	6	1.692 M ²	1.601 M ²

State position of each freeing port ... After Well:—
(F. and A. position and height above deck edge) Forward Well:—FOR POSITION SEE SKETCH BELOW — 260 mm. ABOVE DECK EDGE.

State whether the freeing ports are fitted with shutters, bars, or rails, and give particulars of such:— NONE FITTED.

Additional area where sheer is less than standard.



© 2021

Lloyd's Register Foundation

PARTICULARS OF PROTECTION TO OPENINGS, ETC.

brackets & stays?
24" coaming
only 18" required

HATCHWAYS ON FREEBOARD AND SUPERSTRUCTURE DECKS.										
FREEBOARD DECK				BRIDGE DECK	RAISED QUARTER DECK				UPPER DECK IN POOP	
Description of Hatchway	Nº1 CARGO HATCH	Nº2 CARGO HATCH	Nº3 TUNN. DECK HATCH	Nº4 STORE HATCH	CARGO HATCH	Nº5 CARGO HATCH	Nº6 CARGO HATCH	Nº7 TUNN. DECK HATCH	TUNNEL ESCAPE TRUNK	
Dimensions of Hatchway	7735x6400	10060x6400	820x820	1250x840	2780x4490	10035x6400	9146x6400	820x820	610x610	
COAMINGS	Height above Deck	760	760	610	230	610	610	610	155	
	Thickness	11	11	12	12	11	11	12	7	
	Stiffeners	1778x762x10	1778x762x10	—	—	1778x762x10	1778x762x10	—	—	
	Brackets, Stays	25. 1E.	25. 1E.	—	—	25. 1E.	25. 1E.	—	—	
HATCH BEAMS	Number	7	7	TRUNKED BRIDGE DECK TO UPPER DECK		1	7	5		
	Spacing	1220	1260			1390	1255	1525		
	Scantling and Sketch	250x18	250x18			200x17.5	250x18	225x20		
	Bearing Surface	430x10	430x10			340x10	430x10	430x10.5		
FORE AND AFTERS	Number	—	—			—	—	—		
	Spacing	—	—			—	—	—		
	Unsupported Lengths	—	—			—	—	—		
	Scantling* and Sketch	—	—			—	—	—		
HATCH COVERS	Material	WOOD	WOOD	STEEL	WOOD	WOOD	WOOD	WOOD	STEEL	STEEL
	Thickness	65	65	8	65	65	65	65	8	7
	How fitted	F&A.	F&A.	HINGED	F&A.	F&A.	F&A.	F&A.	HINGED	HINGED
	Bearing Surface	75	75	W.T.	65	75	75	75	W.T.	W.T.
Spacing of Cleats	610	610	3	—	610	610	610	3	3	
Number of Tarpaulins	2	2	TOGGLES	—	2	2	2	TOGGLES	TOGGLES	
<p>*Are wood fore and after steel shod at all bearing surfaces? YES</p> <p>Are battens and wedges efficient and in good condition? YES</p> <p>Are tarpaulins in good condition and in accordance with rule requirements? YES</p> <p>Are lashings provided in accordance with rule requirements? YES - LOCKING BARS ON Nº2, 3, 4 ALSO BRIDGE DECK CARGO HATCHES.</p>										

Particulars of any special features:—

SKYLIGHTS:

STRONG STEEL SKYLIGHT FITTED AT AFTER END OF BRIDGE DECK CARGO HATCH WITH BOLTED W.T. COVER (THIS SKYLIGHT PORTABLE).

STRONG STEEL SKYLIGHT FITTED AT FORWARD END OF BRIDGE DECKHOUSE, STARBOARD SIDE, WITH STRONG GLASS LIGHT AND PROTECTED BY STEEL BARS. PORTABLE STEEL COVER PLATE PROVIDED, SECURED BY MEANS OF BOLTS.

height of coaming?



© 2021

Lloyd's Register Foundation