

Office Copy

No 121 RUDDER & STERN POST

SCALE 1" = 1 FOOT. DETAILS 3" = 1 FOOT.

TO LLOYD'S REQUIREMENTS.

SPEED 12 KNOTS.

AREA AFT OF FORE SIDE

OF MAIN-RECE = 30.03 SQ. FT. = A.

C.O.F.G. OF AREA AFT OF

CR LINE OF PINTLES = 1.97 FT. = D

$A \times D = 59.10$

$= 4\frac{1}{2} \text{ dia} + \frac{1}{2} \cdot 4\frac{1}{2}$

STEERING CHAINS TO DIAPHS

RODS 3/8"

QUADRANT 3/4" RADIUS

BOSS 1 1/2" DEEP x 8" OUTSIDE DIAM.

ARM - ONE 5/8" x 2 1/2"

STEM 5 3/4" x 1 1/8"

1/2" FITTED BOLTS 6 IN NO 7 WITH LOCKING PIN THRO' NUTS

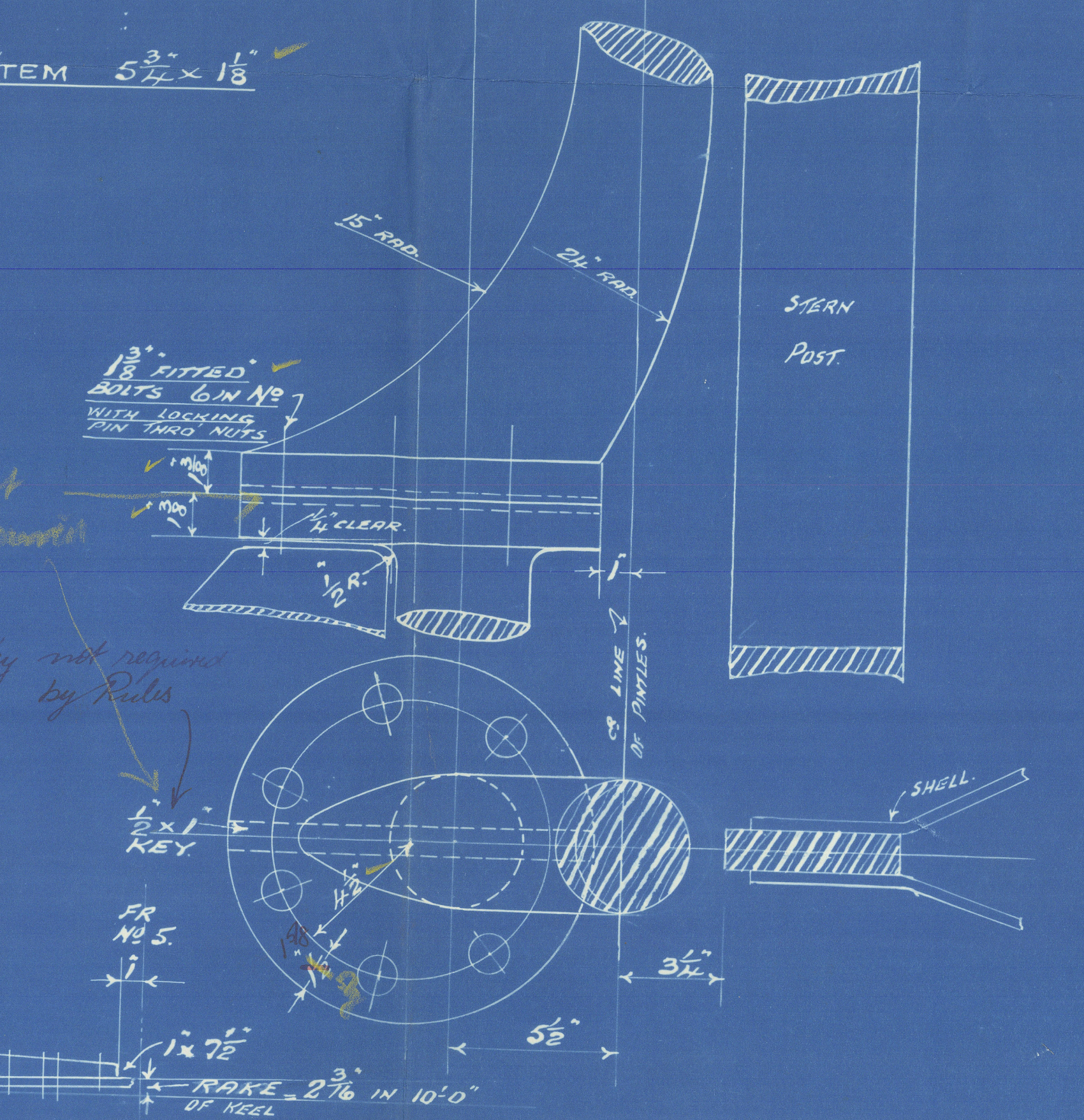
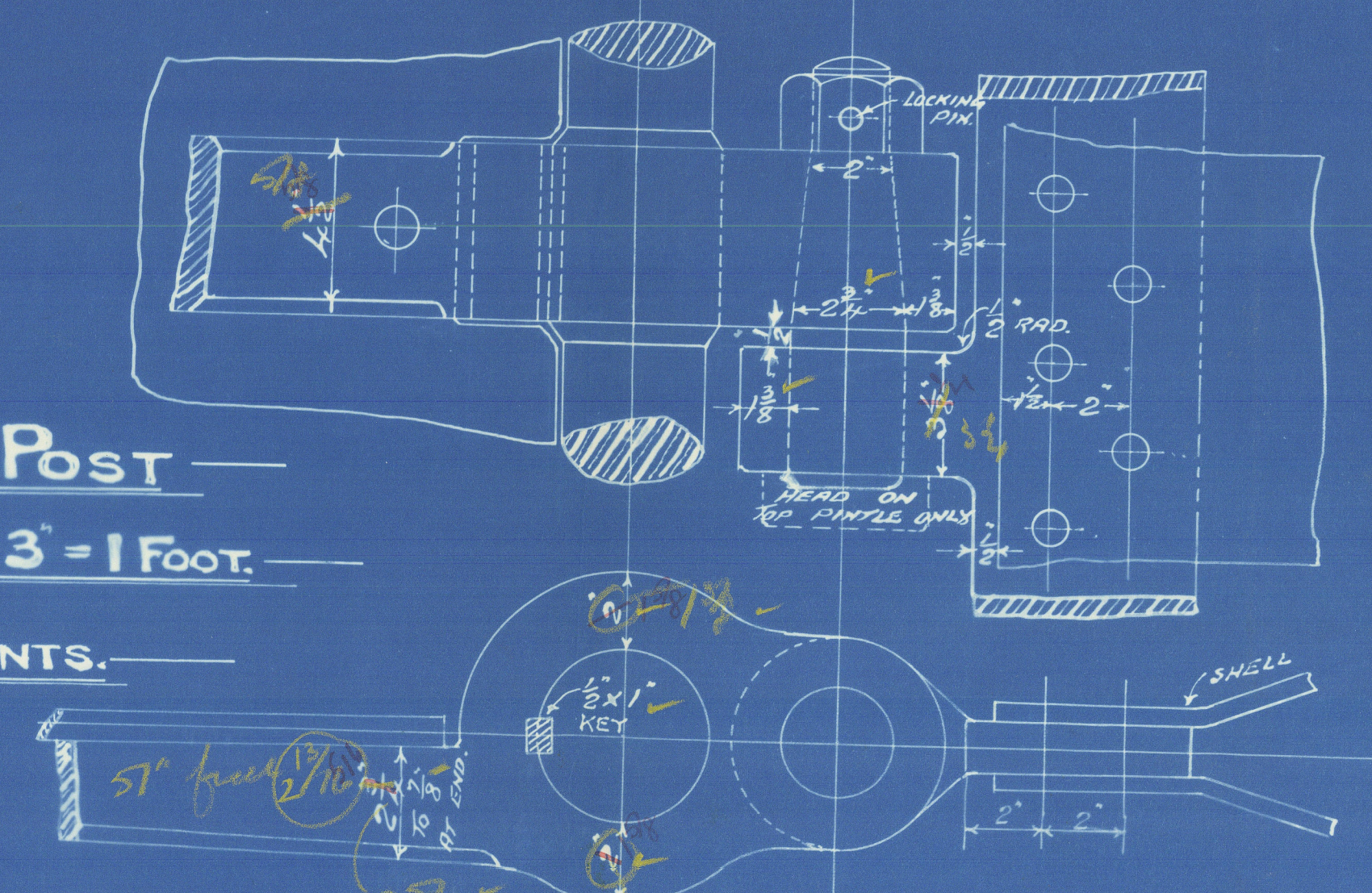
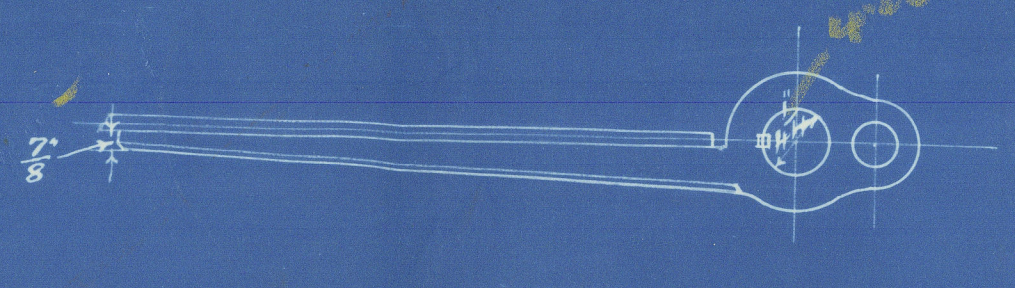
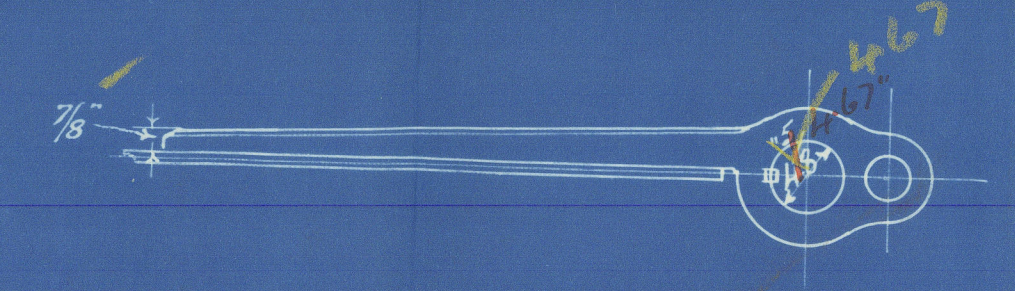
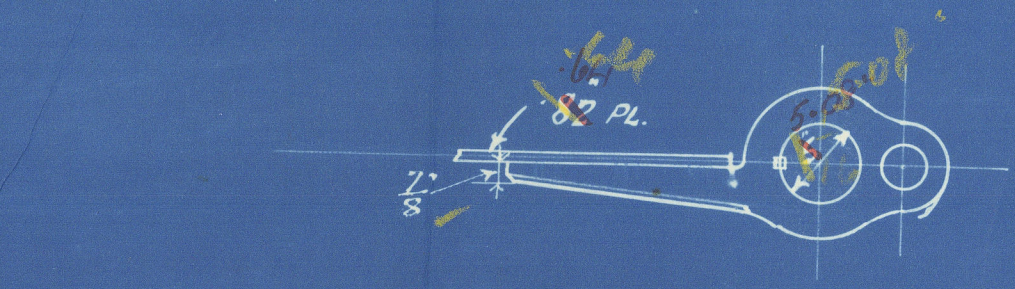
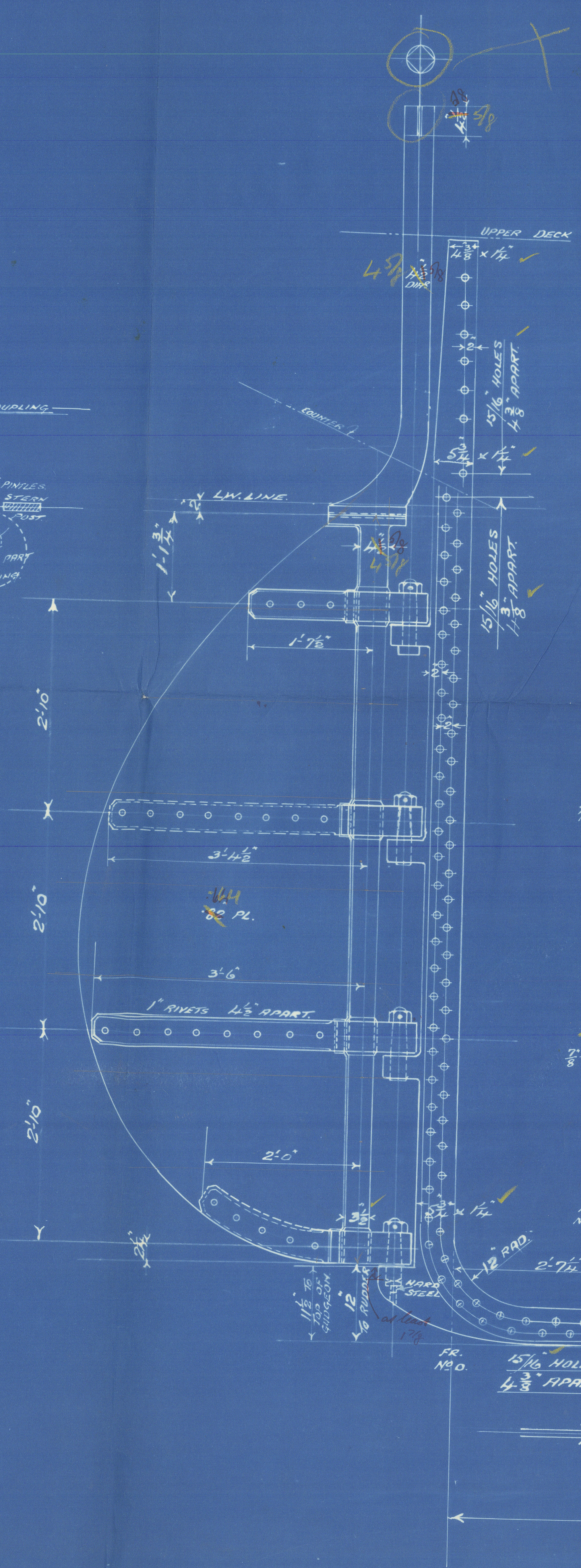
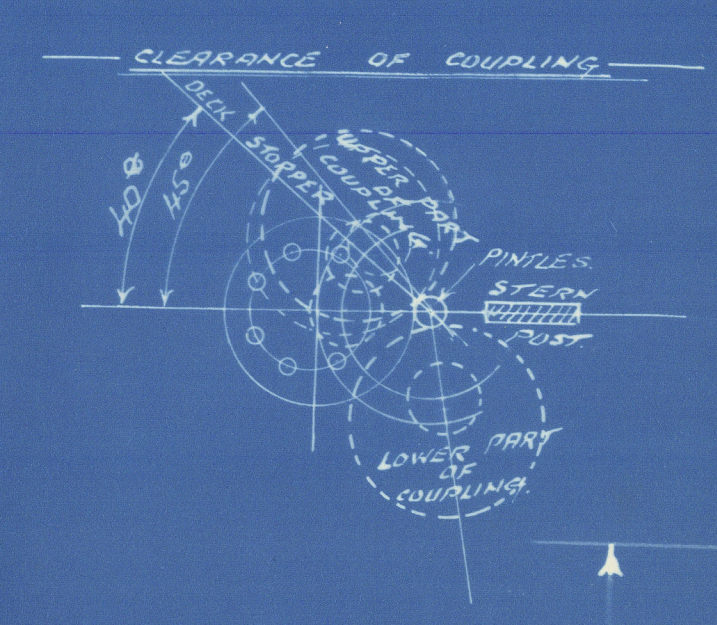
Key not required by Rules

DETAIL OF PINTLES

SCALE 3 IN. = 1 FOOT.

DETAIL OF COUPLING

SCALE 3 IN. = 1 FOOT.



10.12.18

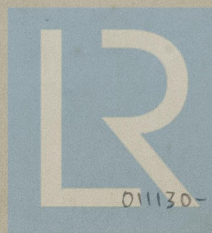
~~GEN. BOX NO 768.~~

Rudder stamp

"

4

Kahanni



© 2021

Lloyd's Register
Foundation

01130-01139-0116