

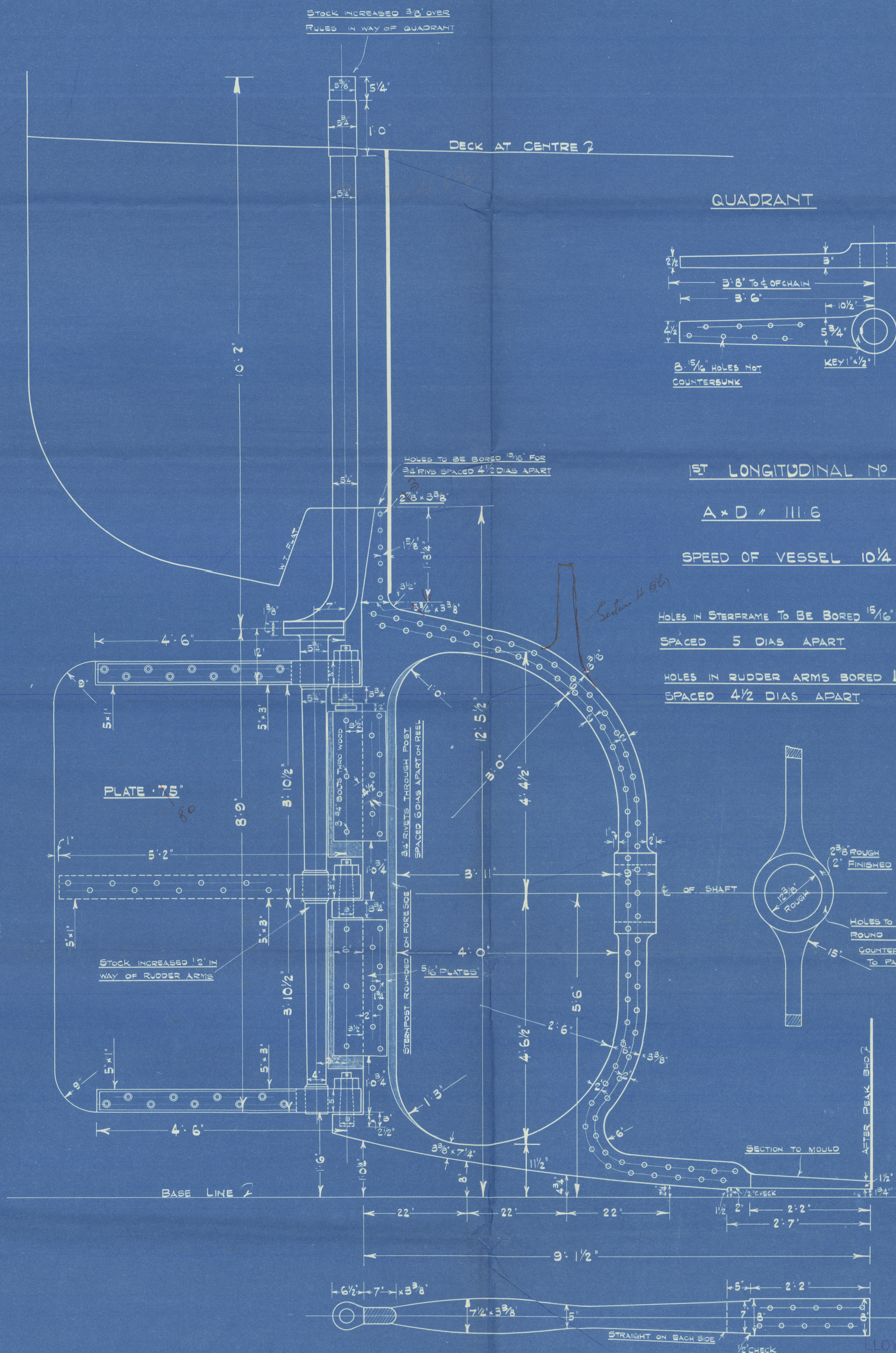
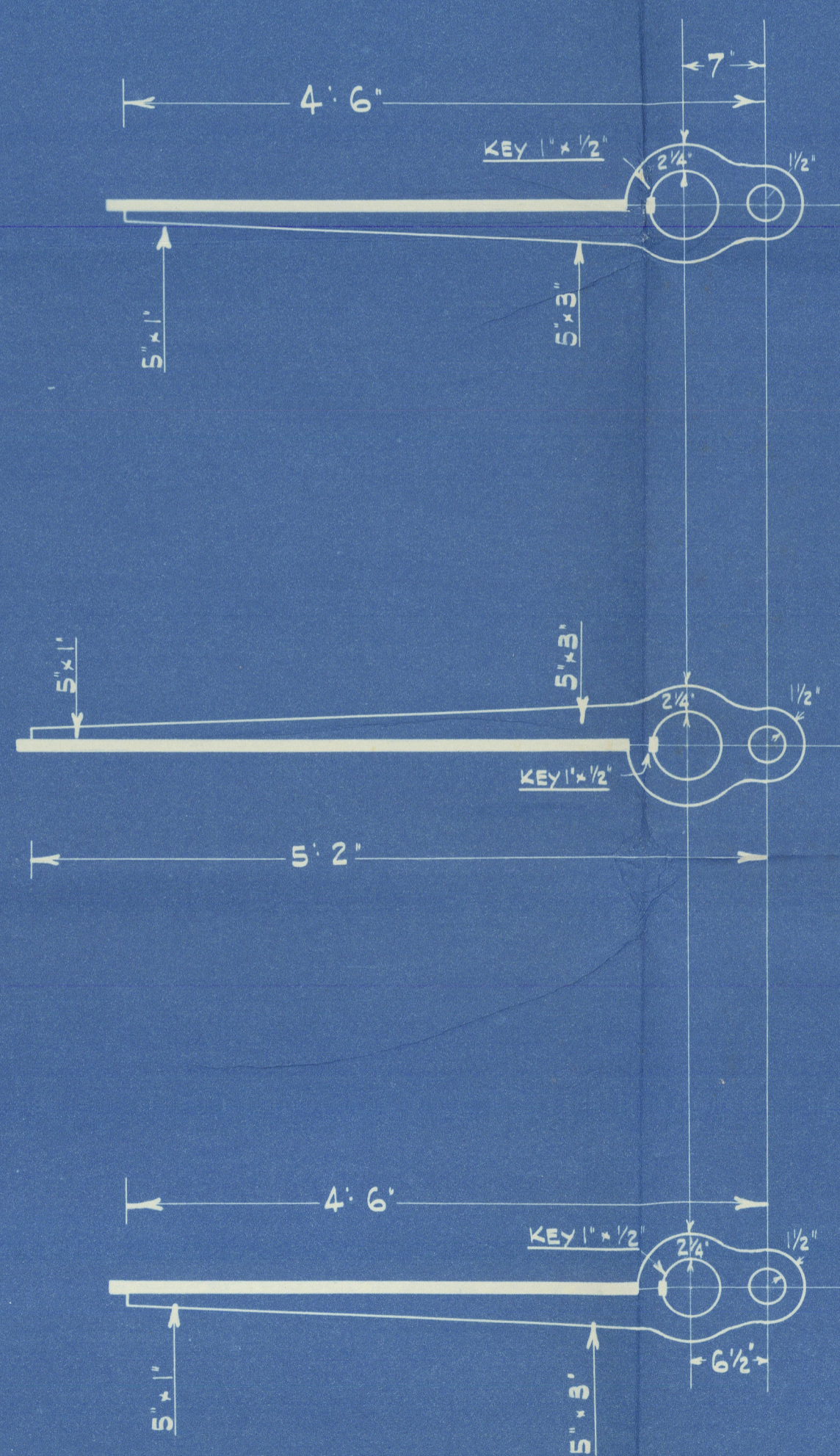
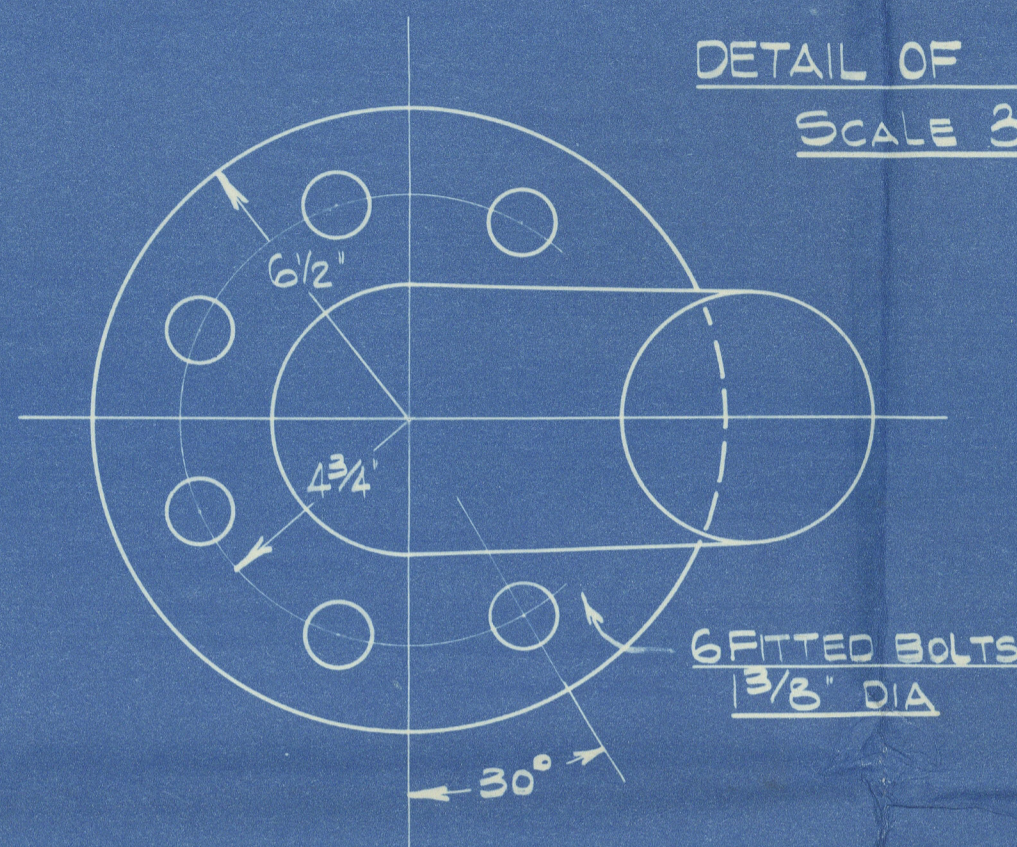
STERNFRAME & RUDDER

M. Y. No 337

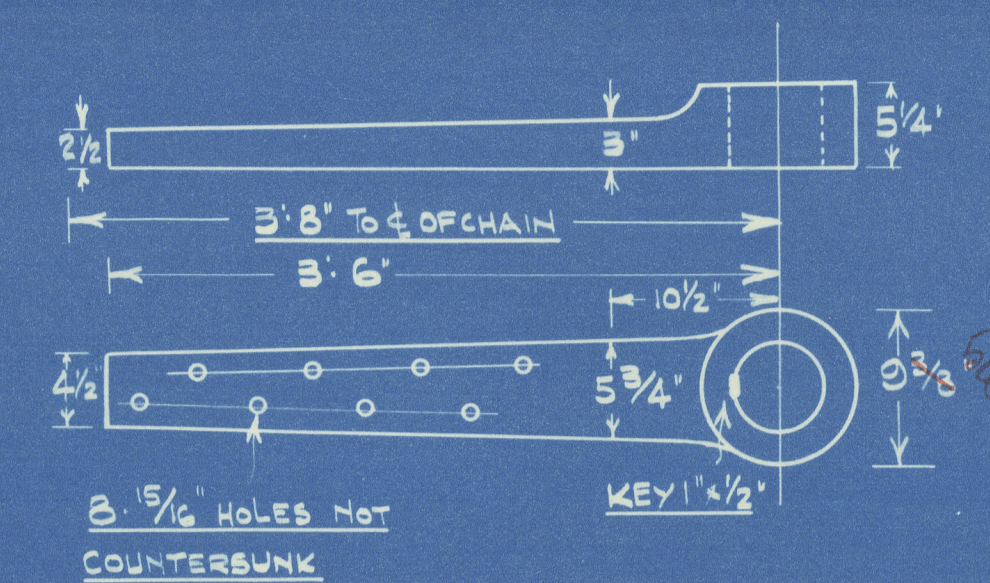
SCALE 1" = 1' 0"



DETAIL OF COUPLING
SCALE 3" = 1' 0"



QUADRANT



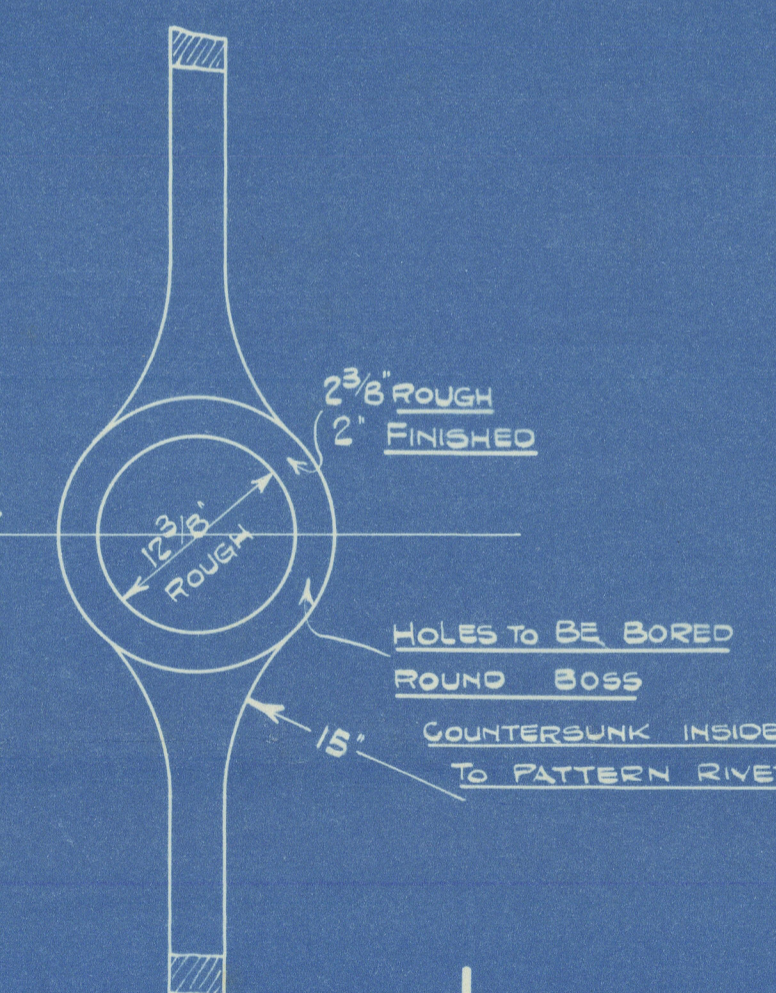
ST LONGITUDINAL No L.D. = 2181

A x D # III 6

SPEED OF VESSEL 10 1/4 KNOTS

HOLES IN STERNFRAME TO BE BORED 1 5/16" FOR 7/8" RIVS.
SPACED 5 DIAS APART

HOLES IN RUDDER ARMS BORED 1 3/16" FOR 1 1/8" RIVS.
SPACED 4 1/2 DIAS APART



APPROVED

LLOYD'S REGISTER OF SHIPPING

23-8-35

Messrs Scott & Sons

Yard No 334

Stemframe & Rudder.

Babinda

GLASGOW REPORT No. 56871



© 2021

Lloyd's Register
Foundation

01110-01119-0071