

SHIP N°463. M.V. "CYGNUS."

MIDSHIP SECTION.

SCALE - 1/2" = 1 FOOT.

DIMENSIONS

LENGTH BP 495'-0"
BREADTH MOULDED 67'-0"
DEPTH MOULDED TO UPPER DECK 36'-5"

CLASS - LLOYD'S 100 A 1/2 CARRYING PETROLEUM IN BULK

LONGITUDINALLY FRAMED AT BOTTOM & DECK

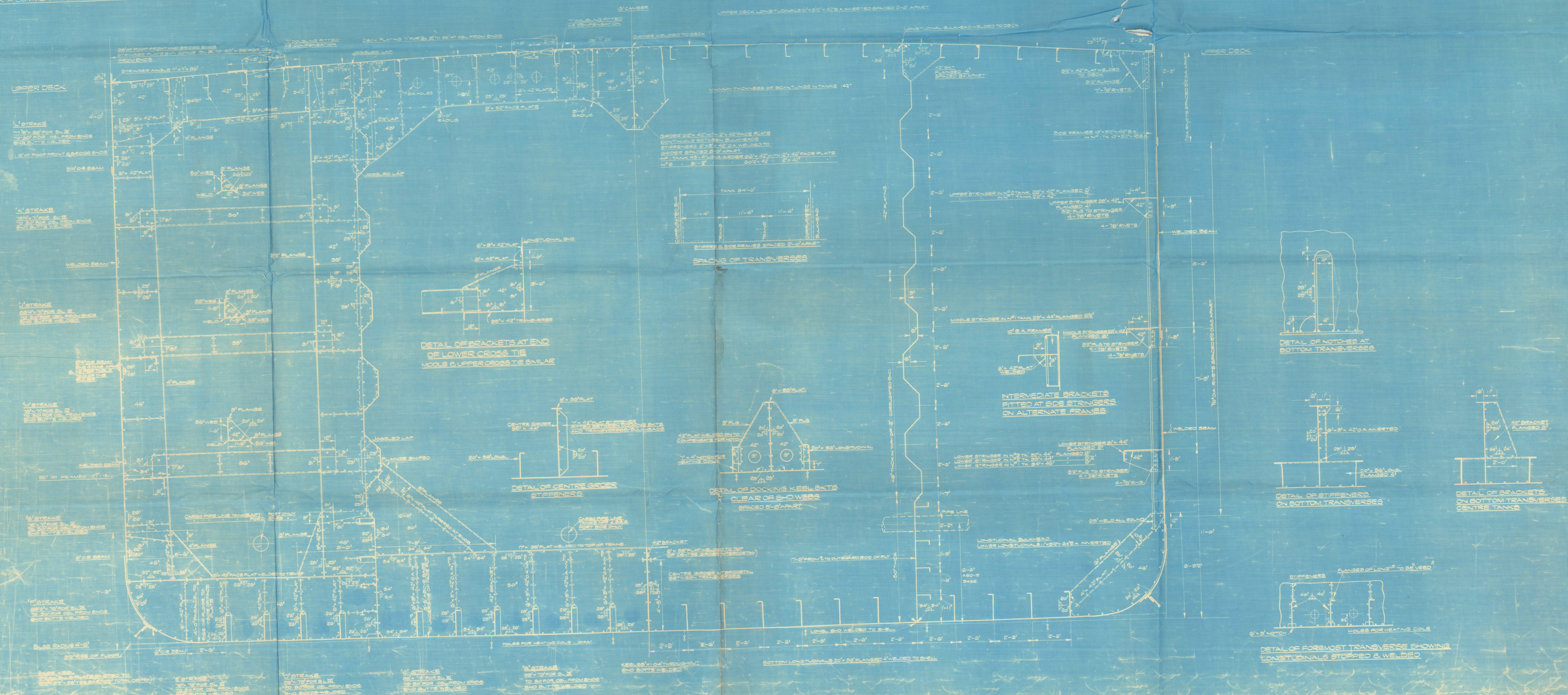
ELECTRICALLY WELDED

SCANTLING SUITABLE FOR A SUMMER MOULDED DRAUGHT OF ABOUT 29'-0 1/2"

NUMERALS

L 495 B 67.5
D 36.42 G 29.04

EQUIPMENT NUMBER	EQUIPMENT LETTER	COLLECTIVE WEIGHT
1. K (B+D) = 4824 (67.5 x 22.42)	2. BOWERS ANCHORS STOCKLESS AT 200 CWT	WEIGHT AT 200 CWT
POOP = 108.7 x 7.5 x 7.5'	ANCHOR AT 772'	2872 CWT
POOPSE = 99.7 x 7.5 x 7.5'	STEAM EX-STOCK AT 200'	
FORECASTLE = 52.8 x 7.5 x 7.5'	300 RATHONS STEEL LINK CHAIN CABLE 2 3/4" DIA OR 2 1/2" DIA TAYCO	
POOP DECKHOUSE = 82.0 x 7.5 x 5'	50' TOWLING	5 1/2"
BOAT DECKHOUSE = (48.5 x 7.5) x (40 x 5) x 5'	2000 HAWESSE	2 3/4" 3 x 12 5/8 WIRE
BRIDGE DECKHOUSE = 35.7 x 8 x 5'	2000 WARP	2 3/4"
UPPER BRIDGE DECKHOUSE = 36.5 x 8 x 5'		



S.2035

10-9-54

T.S. No. 2371

010972 011049-01857 2020

2

FURNESS S.B. & LTD.

YARD No 463.

"CYGNUS"

MIDSHIP SECTION.

(AS BUILT.)

"Cygnus"

MIDDLESBROUGH
REPORT No. 20274

RECORDS DEPT.,
LONDON.

2



© 2020

Lloyd's Register
Foundation

011099-011109-0135