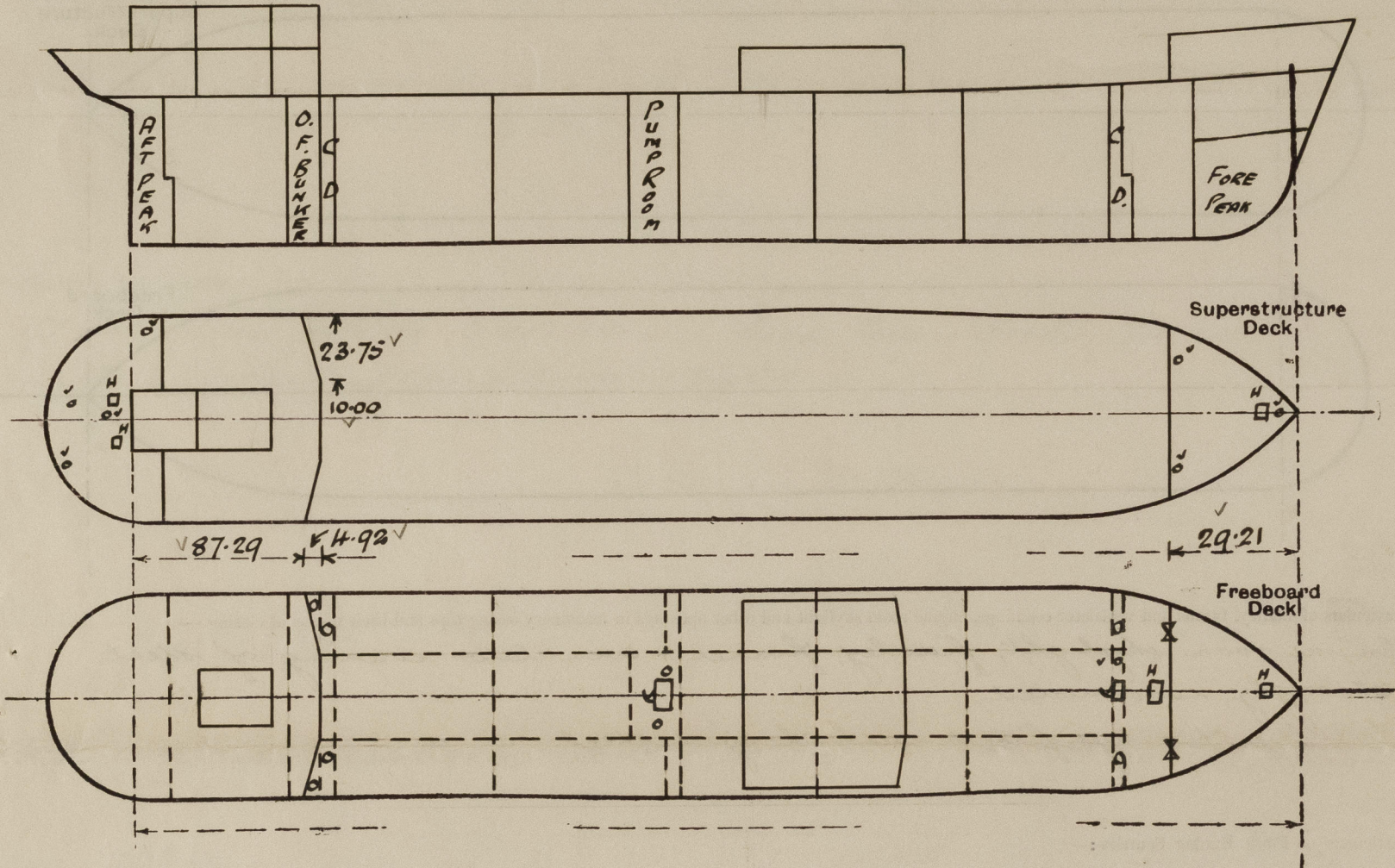


Lloyd's Register of Shipping.
SURVEYS FOR FREEBOARD.
(CONDITIONS OF ASSIGNMENT.)

Index No. 38125
(For London Office only).
7-SEP-1945
N^o 34287.

Ship's Name *M.V. EMPIRE SENLAC* Port of Survey *Sunderland*
Official Number *180169* Surveyor's Signature *W. B. Miller*
Nationality and Port of Registry *BRITISH, SUNDERLAND* Date of Survey *During Construction.*

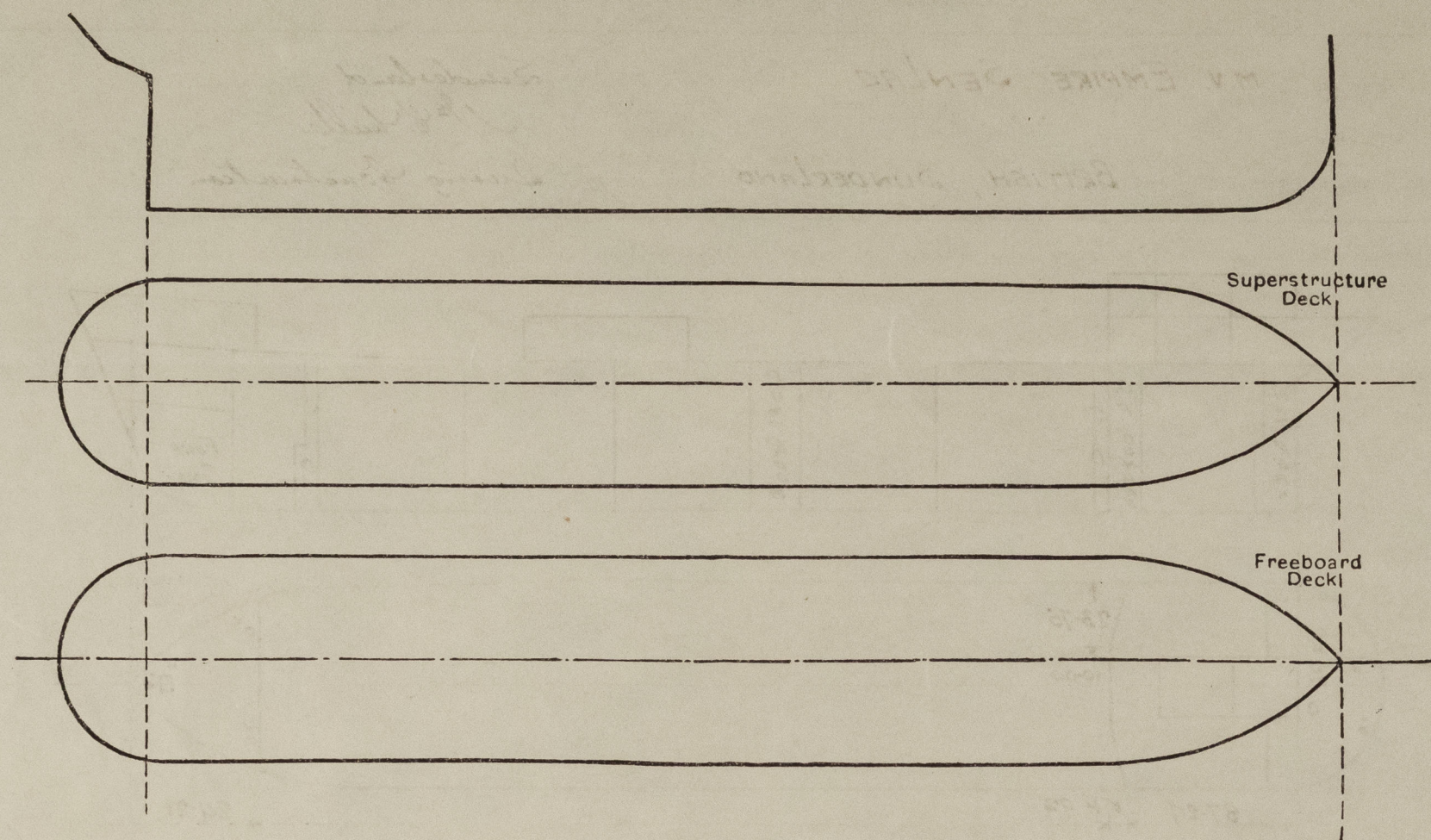
Disposition and dimensions of superstructures, trunks, deckhouses and machinery casings to be inserted in the diagrams and tabular statement : -



Particulars of Superstructures, Trunks, Casings, Deckhouses.								
	Coaming	Plating	Stiffeners	Spacing	End Attachments of Stiffeners	Size of Openings	Height of Sills	Height of Casings
Poop Bulkhead	✓	40 x 44	9 x 3 1/2 x 3/8 L	24 x 33	Bolted and lugged to deck	none.	✓	✓
Raised Quarter Deck Bulkhead ...	✓	✓						
Bridge, After Bulkhead	✓	✓						
Bridge, Forward Bulkhead	✓	✓						
Forecastle Bulkhead	26	26	4 x 3 x 5/16	30	welded to deck	2 @ 4'1" x 3'1"	18"	7'6"
Trunk, Aft	✓	✓						
Trunk, Forward	✓	✓						
Exposed Machinery Casings on Freeboard or Raised Quarter Decks ...	✓	✓						
Exposed Machinery Casings on Superstructure Decks	34	30	5 x 3 x 1/4 L	30" - 34"	continuous	✓	✓	✓
Machinery Casings within Superstructures not fitted with Class I Closing Appliances	✓	✓						
Deckhouses on Flush Deck Ships ...	✓	✓						
Particulars of Closing Appliances (state if capable of being manipulated from both sides).								
Poop Bulkhead	✓ NO OPENINGS.							
Raised Quarter Deck Bulkhead ...	✓							
Bridge, After Bulkhead	✓							
Bridge, Forward Bulkhead	✓							
Forecastle Bulkhead	2 1/2" shifting boards in full height riveted channels.							
Exposed Machinery Casings on Freeboard or Raised Quarter Decks ...	✓							
Exposed Machinery Casings on Superstructure Decks	✓							
Machinery Casings within Superstructures not fitted with Class I Closing Appliances	✓							
Deckhouses on Flush Deck Ships ...	✓							

PARTICULARS OF PROTECTION TO OPENINGS, ETC.

The following diagrams should be used to indicate the positions of cargo and coaling hatchways, gangway, cargo and coaling ports, ventilators, companionways, etc., which would affect the seaworthiness of the ship:—



Particulars of fiddle, funnel and ventilator coamings, engine room skylight and other openings in machinery casing tops and their means of closing:—

✓ Engine room skylight, fiddle, funnel & ventilator coaming of steel strongly constructed.
Fiddle openings fitted with hinged steel covers.

Particulars of Flush Bunker Scuttles:—

NONE.

Particulars of Companionways:— on Freeboard Deck.

Pump Room Entrance. 6'4" deck opening, plating 3/16", stiff 4x3x36 O.A. spaced 18"-24" ✓
bracketed top, 30" top plate with beams 5x3x30 L, mechan. type W.T. door 4'0"x2'3",
18" coaming. ✓
For'd Pump Room Entrance. 5'0"x2'4", plating 1/4", stiff 3 1/2 x 3 1/2 x 40, mechan. type W.T. ✓
door 4'0"x2'3", 18" coaming. ✓

Particulars of Ventilators in exposed positions on freeboard and superstructure decks:—

Fore Deck.
1-6" Vent to Lower Decks. coaming 36"x30" ✓
2-9" " " " " 36"x32" ✓

Pooh Deck.
3-6" Vents to Stores. " 30"x30" ✓

1-5" G.N. " Magazine 36" to top. ✓

Upper Deck
1-9" vent to For'd Pump Room coaming 36"x32" ✓
2-18" " " " " 36"x40" ✓
.25" tube extending 9'9" above deck, stayed. ✓

Ventilators fitted with wood plugs and canvas covers. ✓

Particulars of Air Pipes in exposed positions on freeboard, raised quarter, or superstructure decks:—

Air pipes on Pooh & Fore Decks. 18" to top. ✓
Air pipes on Upper Deck 36" to top. ✓
Air pipes fitted with wood plugs or gauge & canvas cover. ✓

Particulars of Gangway Cargo and Coaling Ports:—

NONE.

Particulars of Scuppers and Sanitary Discharge Pipes:—

Discharges on or above freeboard deck led to N.R. valves. ✓
5"x2 1/2" slots cut in stringer bar, to drain freeboard deck. ✓

Particulars of Side Scuttles:—

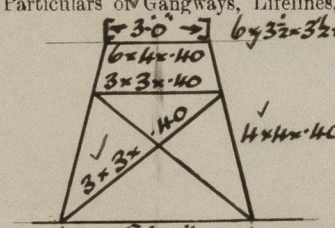
10" dia. sidelights to accomd in Pooh & Fore Decks, fitted with substantial hinged deadlights. ✓

Vertical distance of Sill of lowest Side Scuttle above top of keel 32'0" ✓

Particulars of Guard Rails:—

In way of 8' accomd. Bulwark 69'0"x3'6"x25" plating, rail bar 6x3x34 L ✓
On remainder of Upper Deck, on Pooh & Fore Decks, rails 3'6" high, 3 rails, ✓
stanchions about 5'0" apart.

Particulars of Gangways, Lifelines, etc.:—



Fore & aft gangway 7'6" high from Pooh to Bridge House & from Bridge House to Fore Deck 1/4" chequered plating, supports spaced 8'9", 9'6", 9'10" apart, fore & aft bracing 2 off fore, 3 off aft rails 3'6" high, 2 rails, at gangway sides.

Particulars of Freeing Arrangements.

	Length of Bulwark	Height of Bulwark	Size of Freeing Ports	Number each side	Area each side	Rule area each side
After Well ...	✓					
Forward Well ...	✓					

State position of each freeing port ... (After Well:— ✓

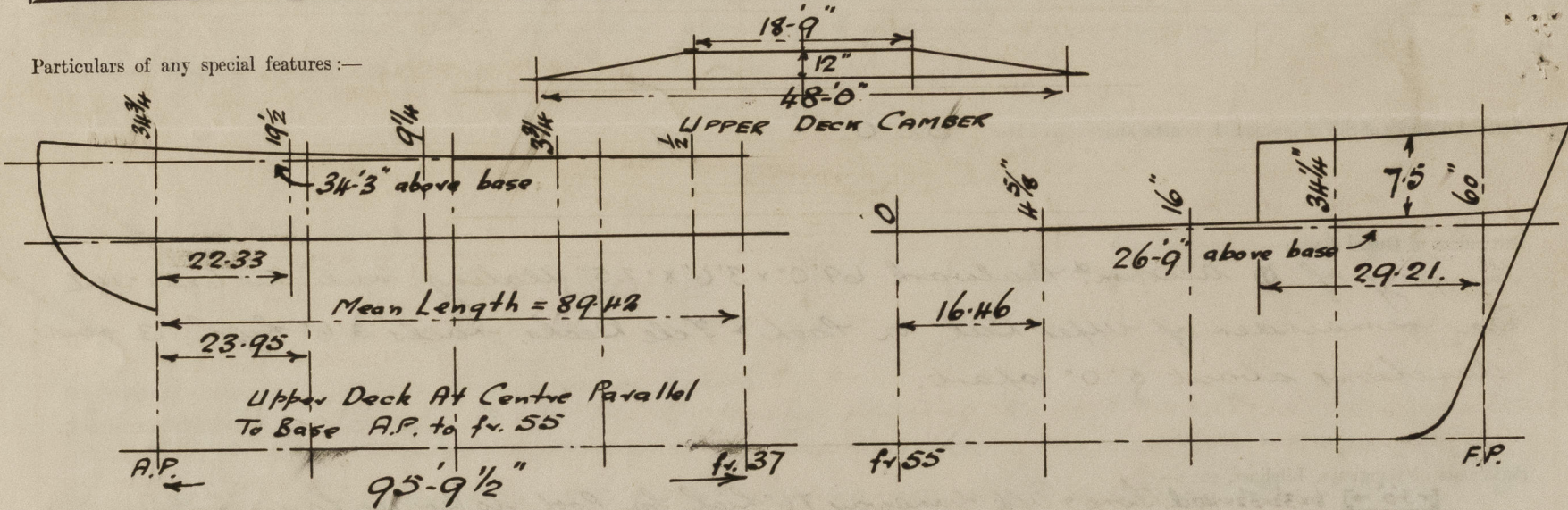
(F. and A. position and height above deck edge) (Forward Well:— ✓

State whether the freeing ports are fitted with shutters, bars, or rails, and give particulars of such:— ✓

Additional area where sheer is less than standard. ✓

PARTICULARS OF PROTECTION TO OPENINGS, ETC.

HATCHWAYS ON FREEBOARD AND SUPERSTRUCTURE DECKS.									
Description of Hatchway									
Dimensions of Hatchway		<u>FREEBOARD DECK</u>							
COAMINGS	Height above Deck	✓	<u>15 Hatches to Cargo Tanks</u> 48" dia x 10 x 7/8" coamings - 40" O.T. cover 8 toggles.						
	Thickness	✓	<u>6 O.T. Hatches to Cofferdams & O.F. Bunker</u> 24" dia. x 8" x 40" - 40" cover, 5 toggles.						
	Sides	✓	<u>Hatch to Store Ford.</u> 3'8" x 2'6" x 9" L coaming, Rest, Cover, Cleats, 1 tarpaulin						
	Ends	✓	<u>Hatch to Chain Locker</u> 1'9" x 2'0" x 9" L coaming, Rest, Cover, Cleats, 1 tarpaulin						
HATCH BEAMS	Stiffeners	✓	<u>Hatch to Ford Deep Tank.</u> 2'7" x 4'1" x 8" x 40" Coaming, - 50" cover 10 toggles.						
	Brackets, Stays	✓	<u>FeLE DECK.</u>						
		✓	<u>Hatch to Tween Decks</u> 2'6" x 2'6" x 5" x 7/8" coaming. - 40" cover. 8 toggles.						
		✓	<u>POOP DECK</u>						
FORE AND AFTERS	Bearing Surface	✓	<u>2 Hatches to Magazine & Store</u> 2'3" x 2'6" x 9" x 40" Coaming, - 40" Covers.						
	Number	✓	8 Toggles,						
	Spacing	✓							
	Unsupported Lengths	✓							
HATCH COVERS	Scantling* and Sketch	✓							
		✓							
		✓							
		✓							
Spacing of Cleats									
Number of Tarpaulins									
*Are wood fore and afters steel shod at all bearing surfaces? Are battens and wedges efficient and in good condition? Are tarpaulins in good condition and in accordance with rule requirements? Are lashings provided in accordance with rule requirements?									



Endorsement at first survey and at surveys for renewal of Certificate:—

The fittings and appliances are in accordance with the particulars shown on this form (or as now modified) and are in good condition.



© 2020

Lloyd's Register
Foundation