

# TWIN SCREW FERRY STEAMER.

## PROFILE & DECK PLAN.

TO PASS LLOYDS CLASS "A1" "FERRY SERVICE - TILBURY & GRAVESEND."  
TO PASS BOARD OF TRADE HAVING NO 5 CERTIFICATE FOR 300 PASSENGERS & 10 CREW.

DIMENSIONS:- LENGTH B.P. = 145'-0", BREADTH M<sup>LD</sup> = 39'-0", DEPTH M<sup>LD</sup> = 12'-0".

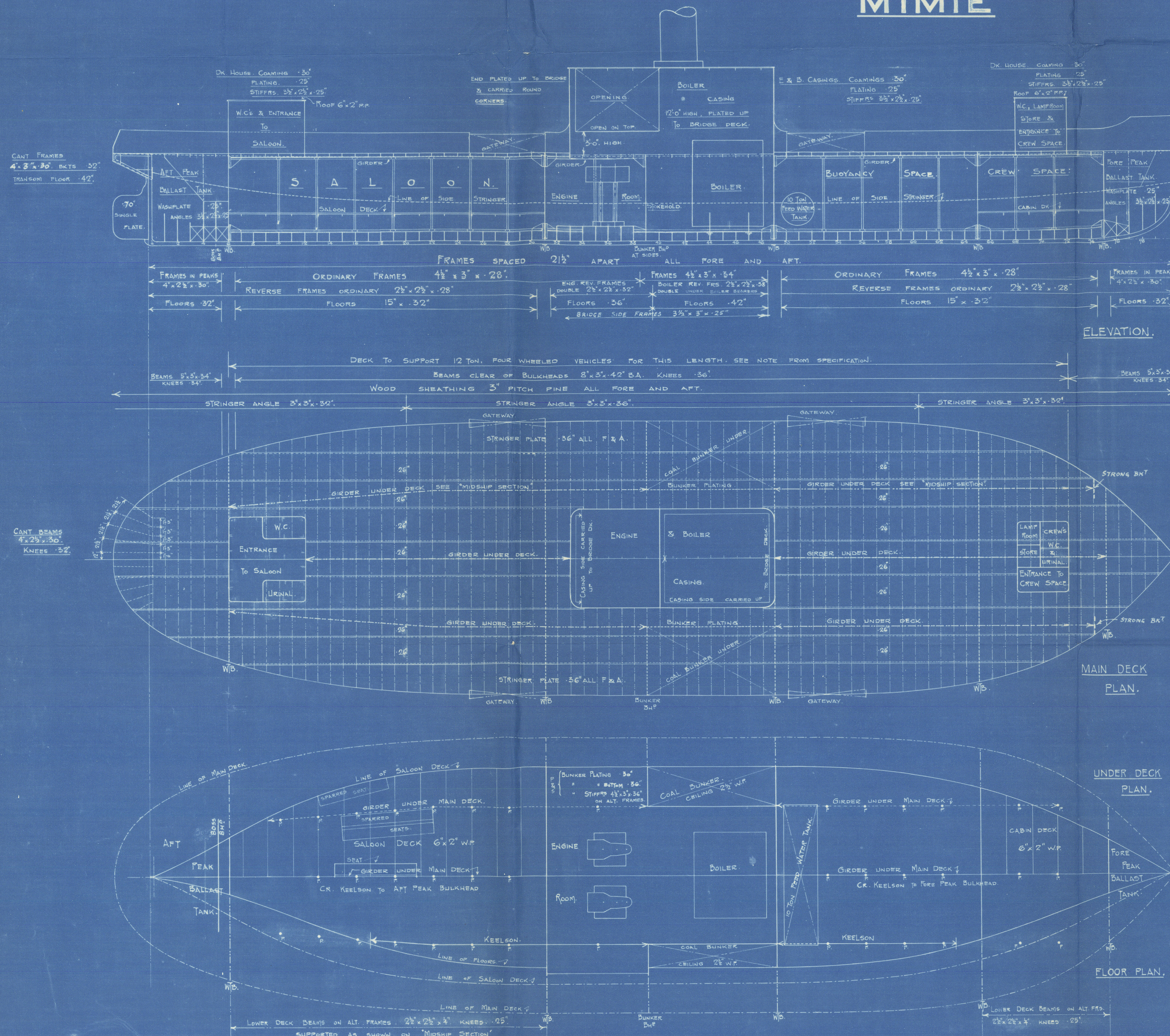
SCALES:-  $\frac{1}{8}" = 1$  FOOT.

"MIMIE"

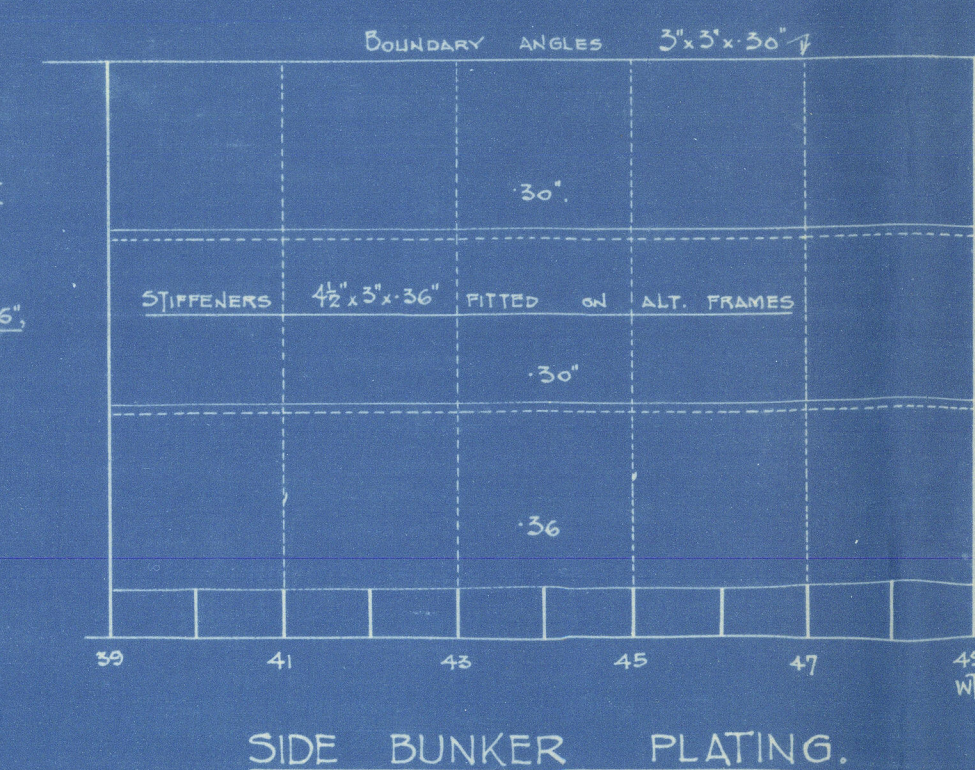
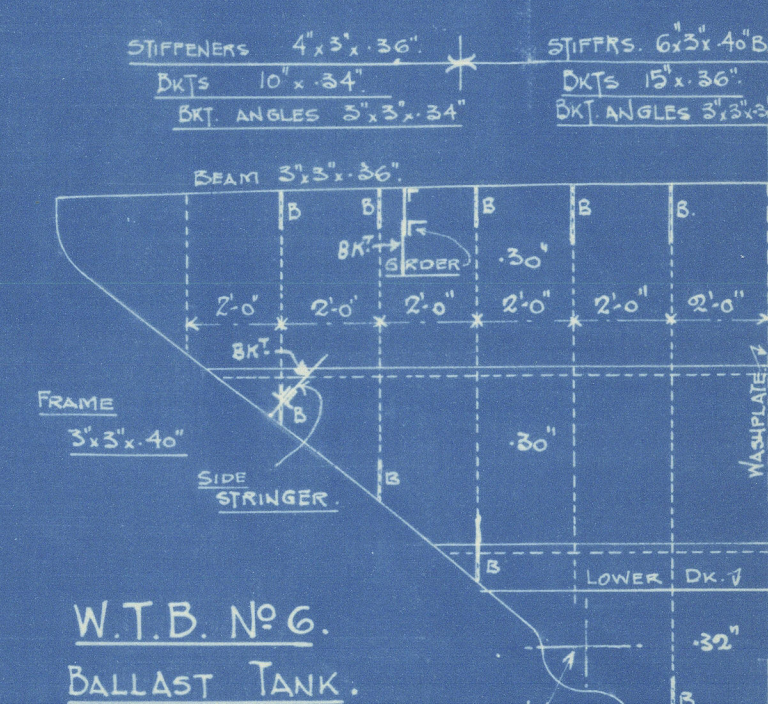
LLOYDS NUMERALS.  
L = 145, B = 39, D = 12, d = 10.75.  
L x D = 1740, L x (B + D) = 7395,  $\frac{L}{B} = 12.10$ .

1<sup>ST</sup> LONGITUDINAL NUMBER = 1740.  
2<sup>ND</sup> LONGITUDINAL NUMBER = 7395.

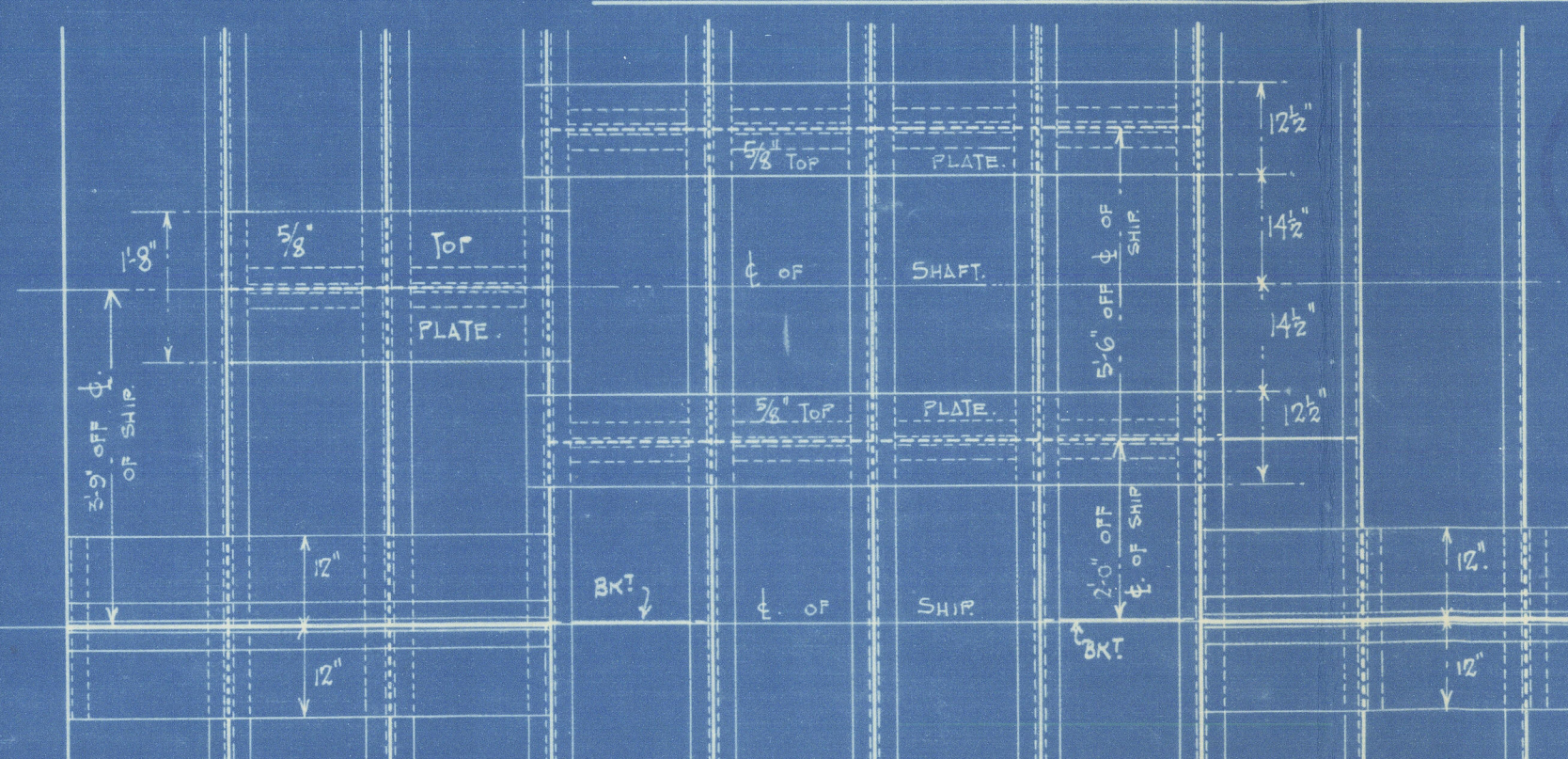
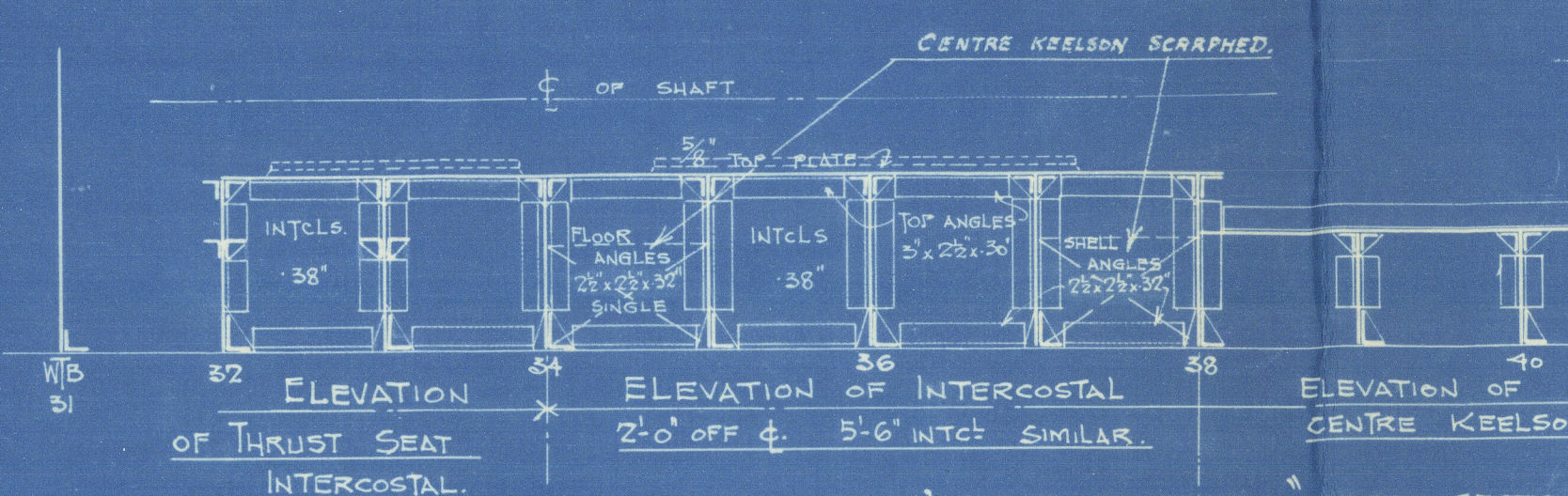
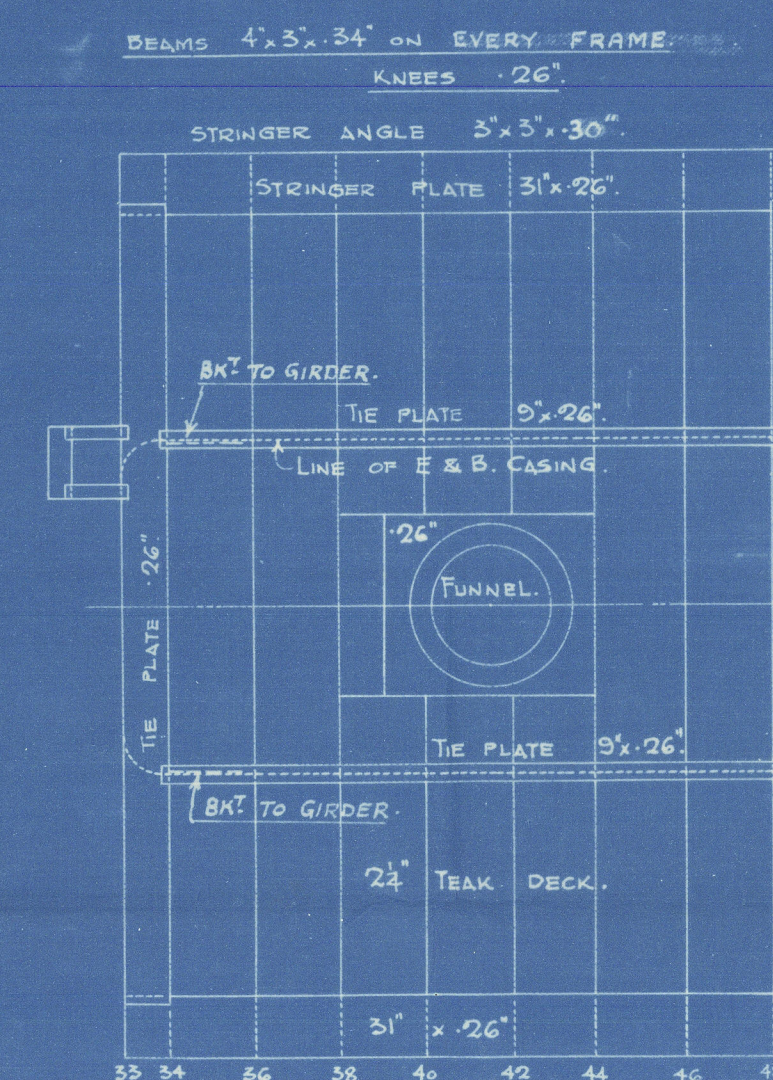
EQUIPMENT NUMBER.  
2<sup>ND</sup> LONGITUDINAL NO = 7395.  
BRIDGE 28-06 x 12 x 7 = 253.  
EQUIPMENT NO = 7653.



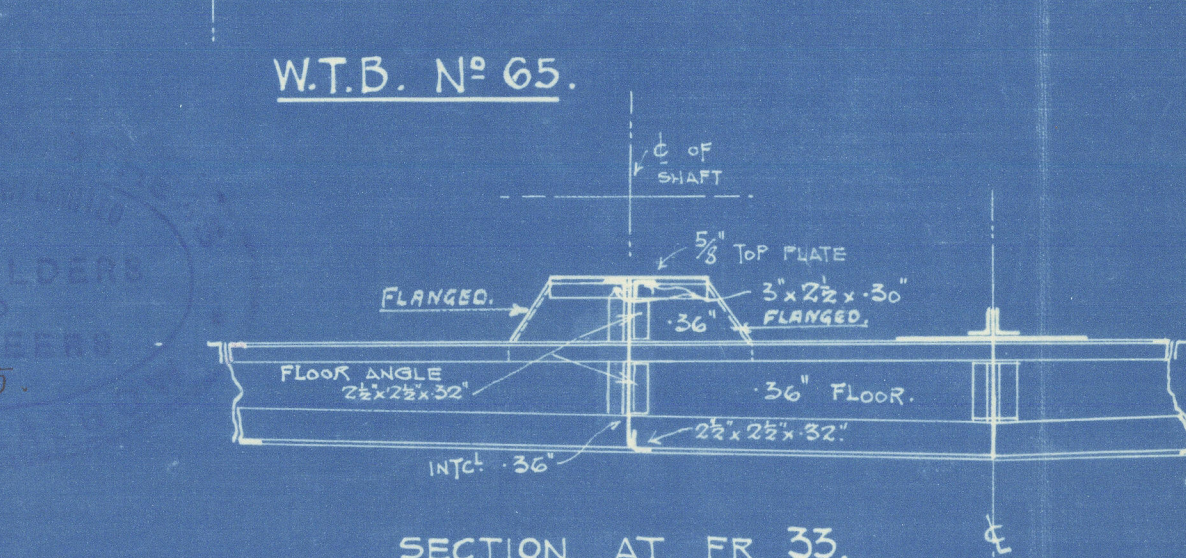
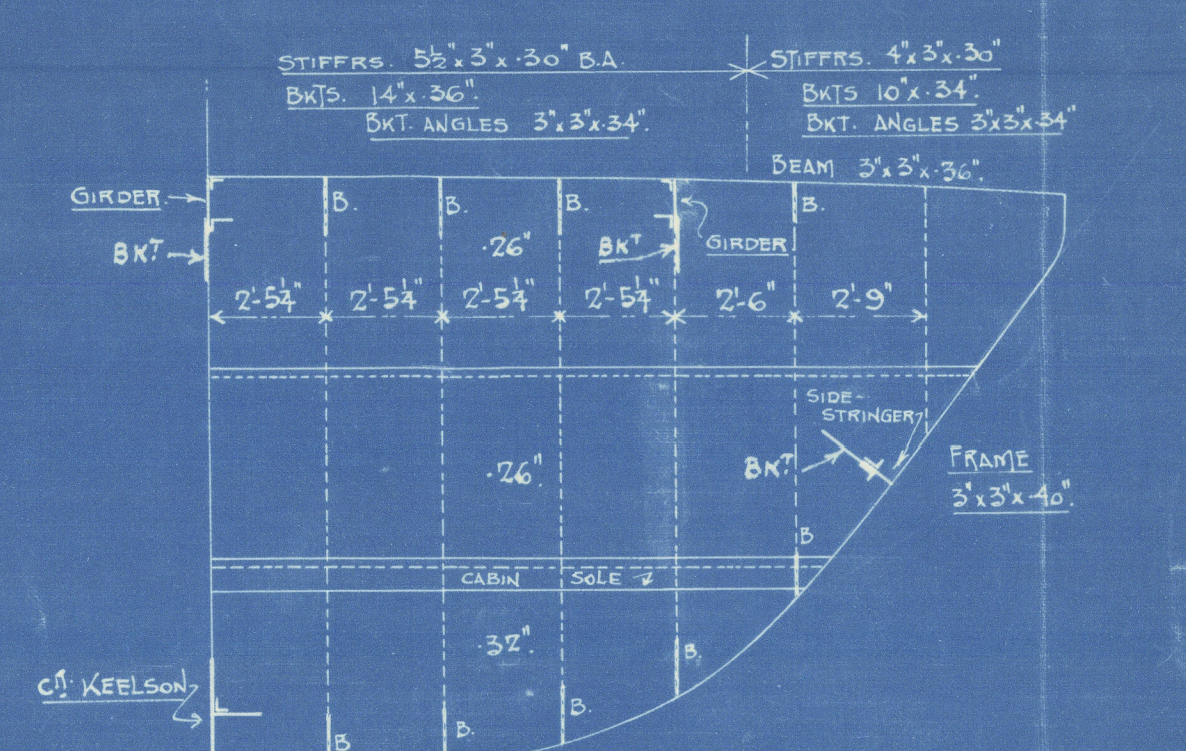
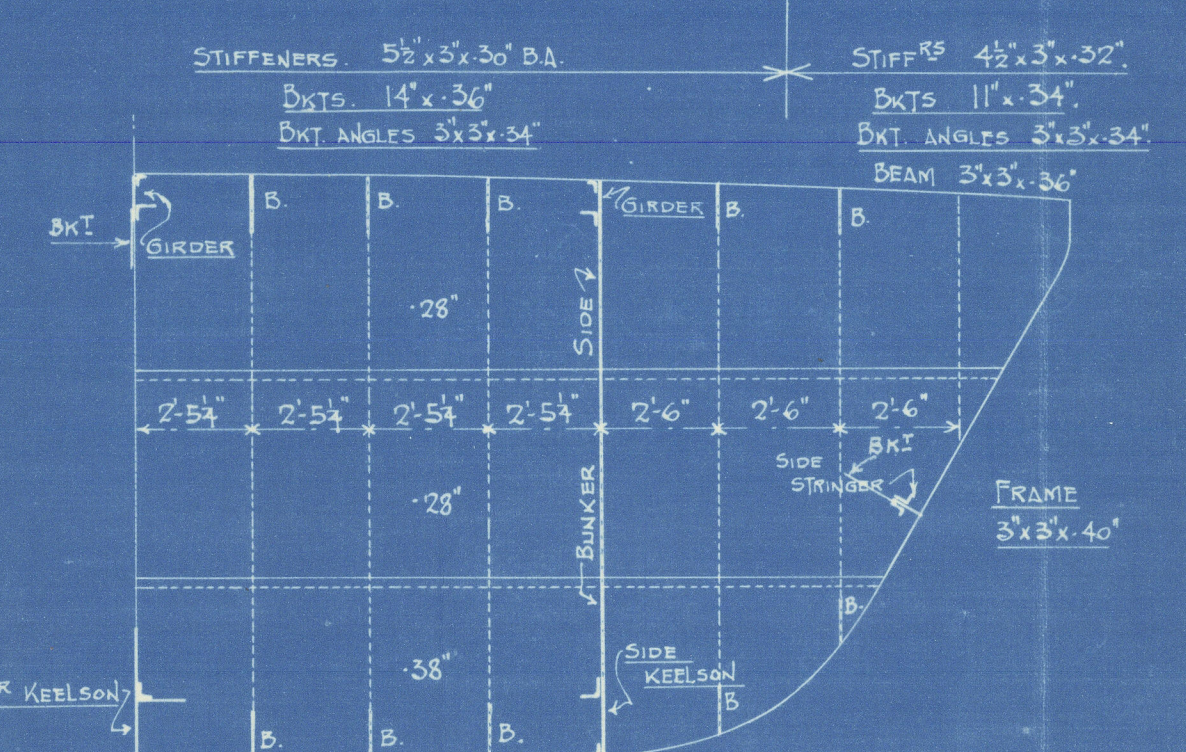
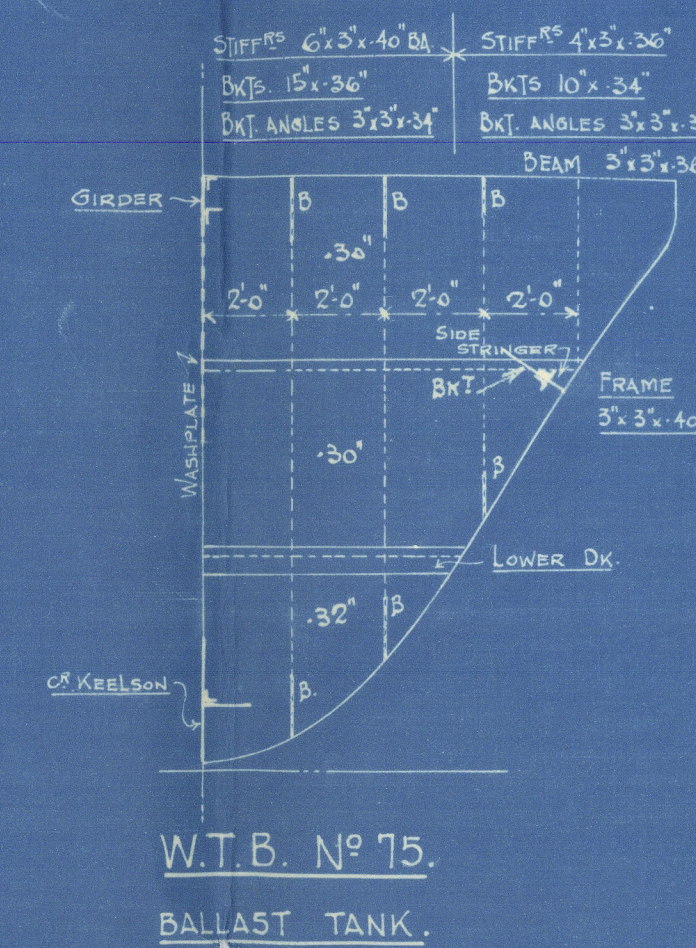
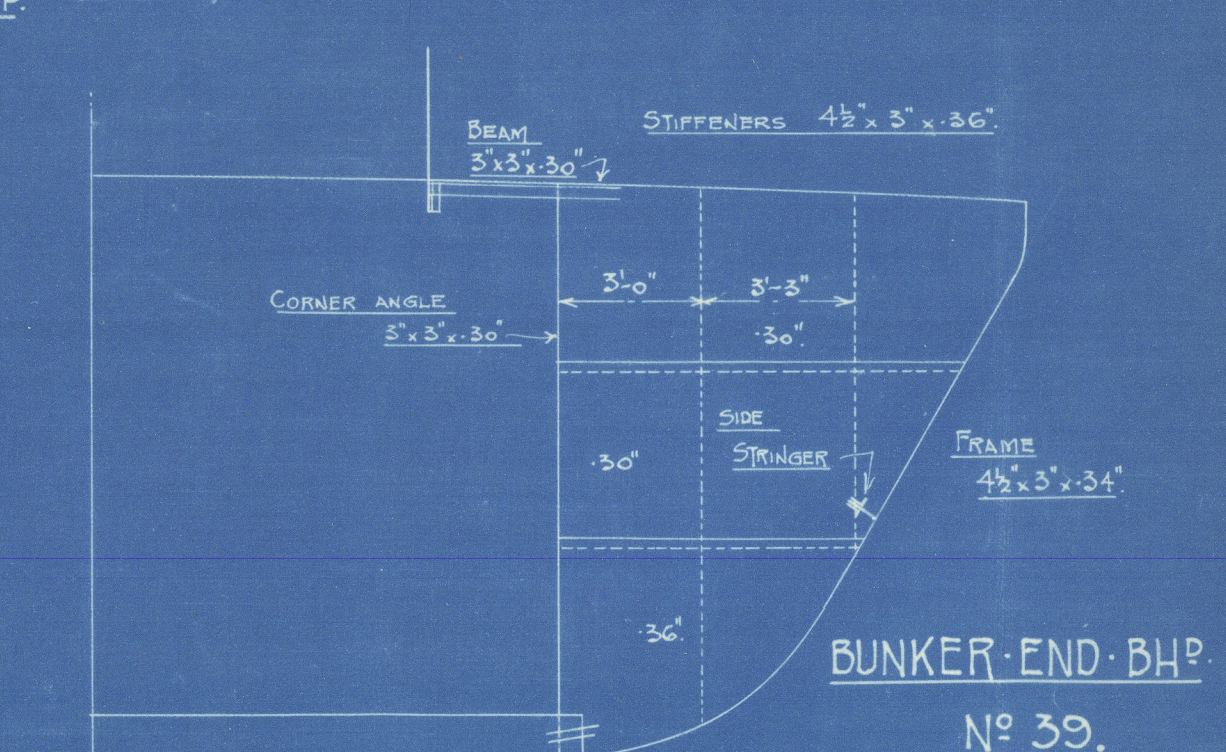
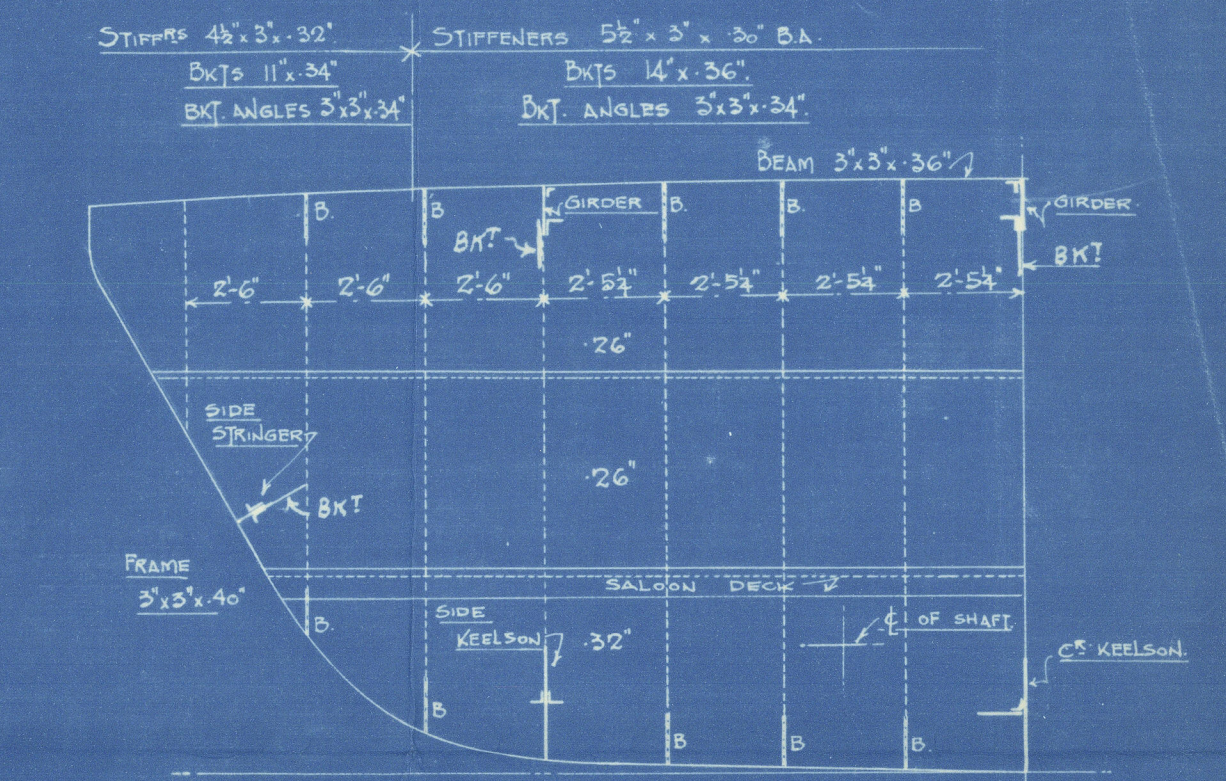
NOTE FROM SPECIFICATION.  
THE MAIN DECK TO BE CONSTRUCTED OF SUFFICIENT STRENGTH TO SUPPORT 4 WHEELED VEHICLES HAVING AXLE LOADS OF 4 TONS AND 8 TONS RESPECTIVELY, A WHEEL BASE OF 10'-6", AND A WHEEL TRACK OF BETWEEN 5 FT & 6 FT ON BOTH AXLES.



THIS DECK TO BE STRONG ENOUGH TO CARRY PASSENGERS.



BOSS BHP NO 5.  
NON W.T. INSIDE SHIP.



DETAIL OF ENGINE SEAT.  
SCALE:  $\frac{1}{2}" = 1$  FOOT.

YARD NO 286.

REF. NO 286. PLAN NO 3. 9/6/27.



Jerguson Bros (Pffs.) Ltd.

Swiss S. Ferry Steamer

MIMIE

N<sup>o</sup> 286.

Profile & D<sup>t</sup> Plan

as Built.

Gen. Rep. N<sup>o</sup> 18811.



© 2020

Lloyd's Register  
Foundation

011079-011088-0091