

# MIDSHIP SECTION

S.S. No 527 Also 53546

DIMENSIONS 345'x49'9" EX. x 49'7" MLD. x 28'5" MLD. TO SPAR DECK.  
TO CLASS 100 A.1. AT LLOYDS & SPAR DECK RULE.

SCALE 1/2" = ONE FOOT.

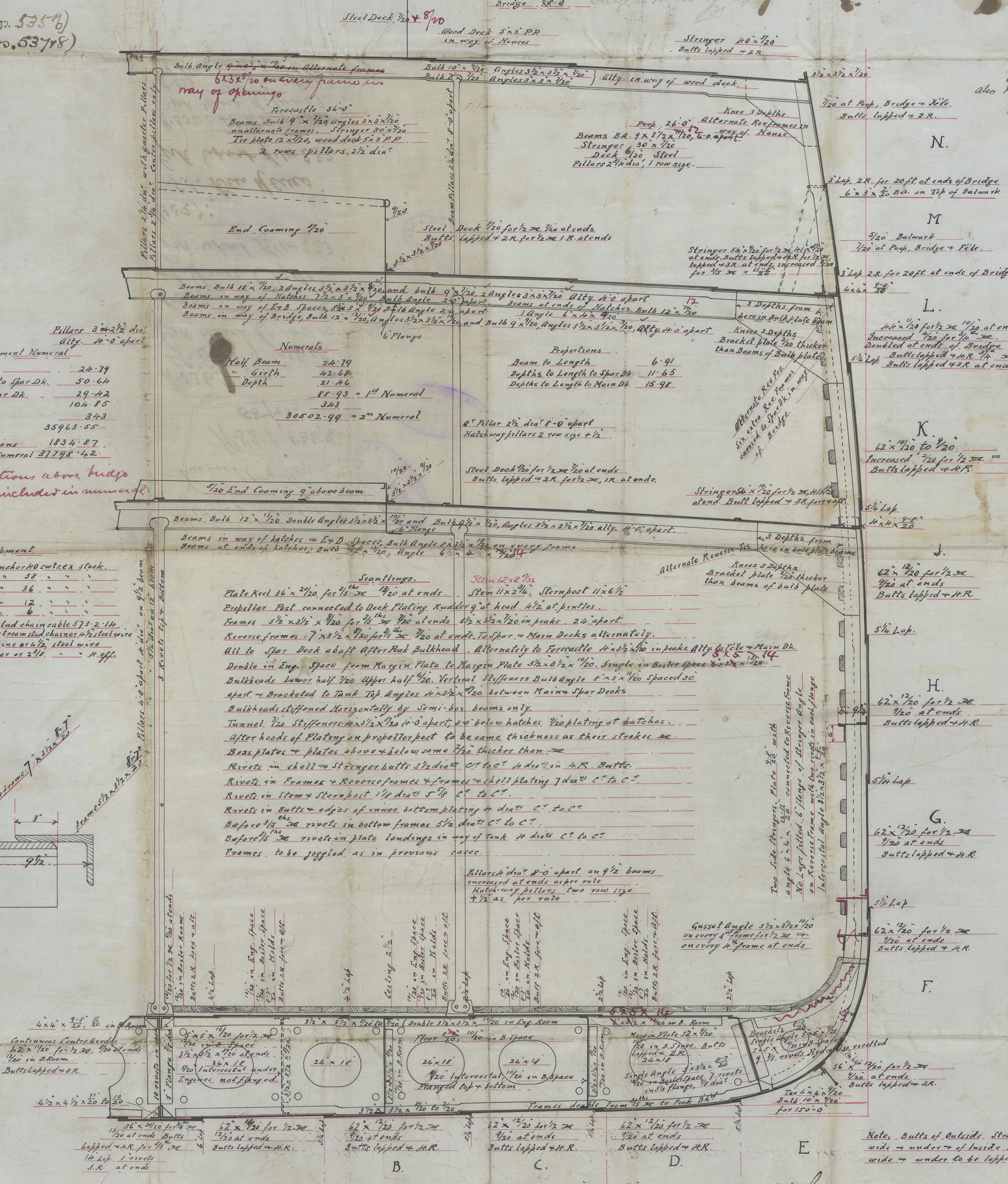
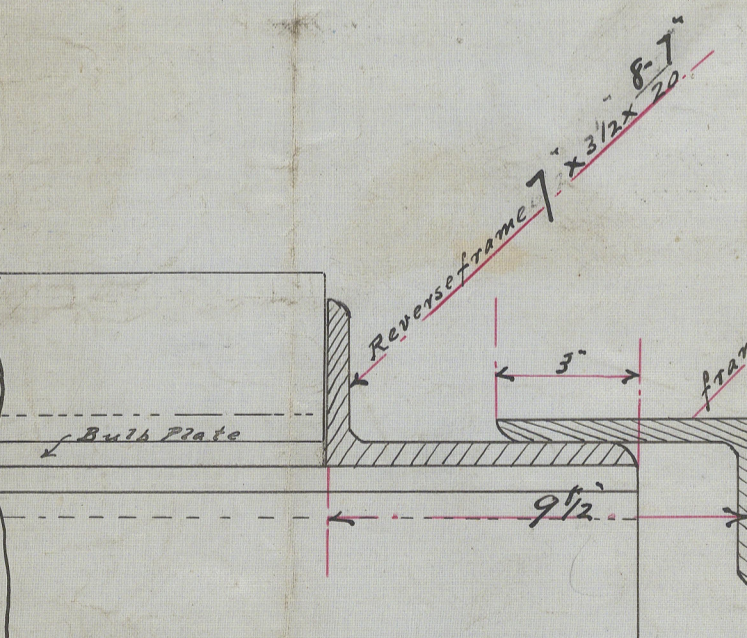
10.2.04  
76.2.04  
23.3.04 (No. 53546)  
6.4.04 (No. 53748)  
16.6.04  
6.7.04  
10.8.04

4/2/04  
Bridge 90/5  
also No 527 & 535  
Bridge 9/0

Equipment Numerals  
Half Beam 24.79  
Half Girth to Spar Dk. 50.64  
Depth to Spar Dk. 29.42  
104.85  
34.3  
35963.55  
Erections 1834.27  
Equipment Numerals 37798.42

Erections above bridge  
to be included in numeral.

Equipment  
1 Bow Anchor 40 cwt. ex stock.  
1 " " 58 " " "  
1 " " 36 " " "  
1 Stream " 12 " " "  
1 Kedge " 6 " " "  
270 Tons 2 1/2" stud chain cable 573.2.14  
40 " 1 1/2" stream stud chain 1/2" steel wire  
120 " 1 1/2" Towline or 1/2" steel wire  
90 " 7" Hawser or 2 1/2" " " off



Note, Butts of Outside Strakes where 46" wide + under + of inside strakes where 54" wide + under to be lapped 3 R.

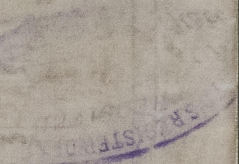
10/2/04  
21.3.04  
5.4.04

Midship Section

Russell & Co.

N<sup>o</sup> 527, 535, 6

537 & 8.



N<sup>o</sup> 536.

S.S. Earl of Carrick  
Grk report N<sup>o</sup> 14210

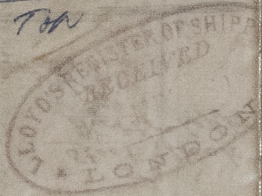
Transferred to

N<sup>o</sup> 537

S.S. River Clyde

+ Maruja +  
Aurora  
Des Bx  
116 TON

Grk report N<sup>o</sup> 14223



N<sup>o</sup> 527:

S.S. Ben Hurio  
Grk report N<sup>o</sup> 14252

N<sup>o</sup> 535: S.S. Ben Vrackio  
Grk report N<sup>o</sup> 14459.

N<sup>o</sup> 538: S.S. Saint Bride  
Grk report N<sup>o</sup> 14462

© 2021

Lloyd's Register  
Foundation

3320-860110-110110