

Rpt. Q.11.

LLOYD'S REGISTER OF SHIPPING

Index No. _____
(For London Office only.)

UNITED WITH THE BRITISH CORPORATION REGISTER

SURVEYS FOR FREEBOARD.

(CONDITIONS OF ASSIGNMENT.)

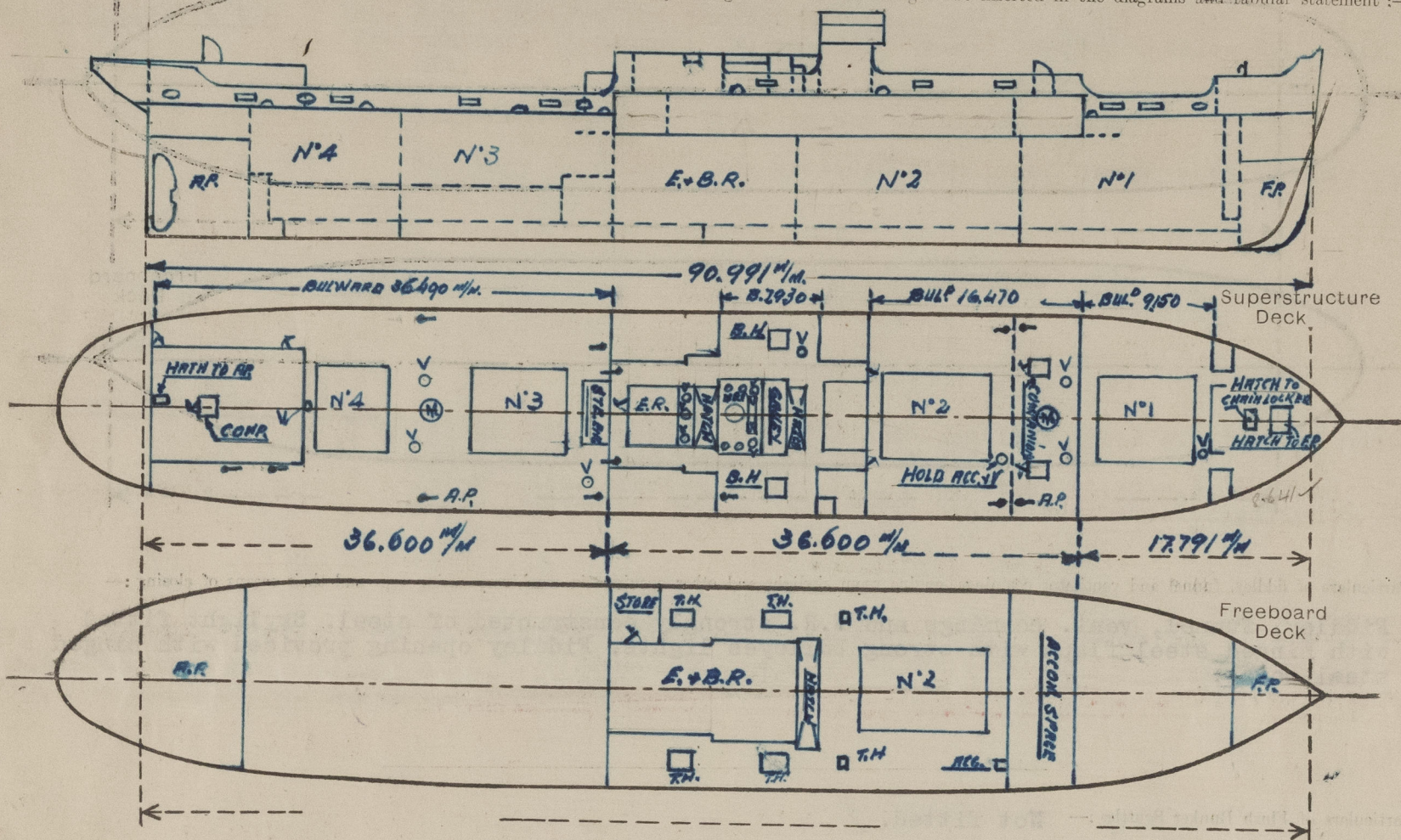
Bbo Rpt 11862

Ship's Name MARQUES DE URQUIJOPort of Survey BILBAO

Official Number _____

Surveyor's Signature F. LarruceaNationality and Port of Registry Spanish - Bilbao.Date of Survey During Reclassification.

Disposition and dimensions of superstructures, trunks, deckhouses, machinery casings and wood sheathing to be inserted in the diagrams and tabular statement:—



Particulars of Superstructures, Trunks, Casings, Deckhouses.

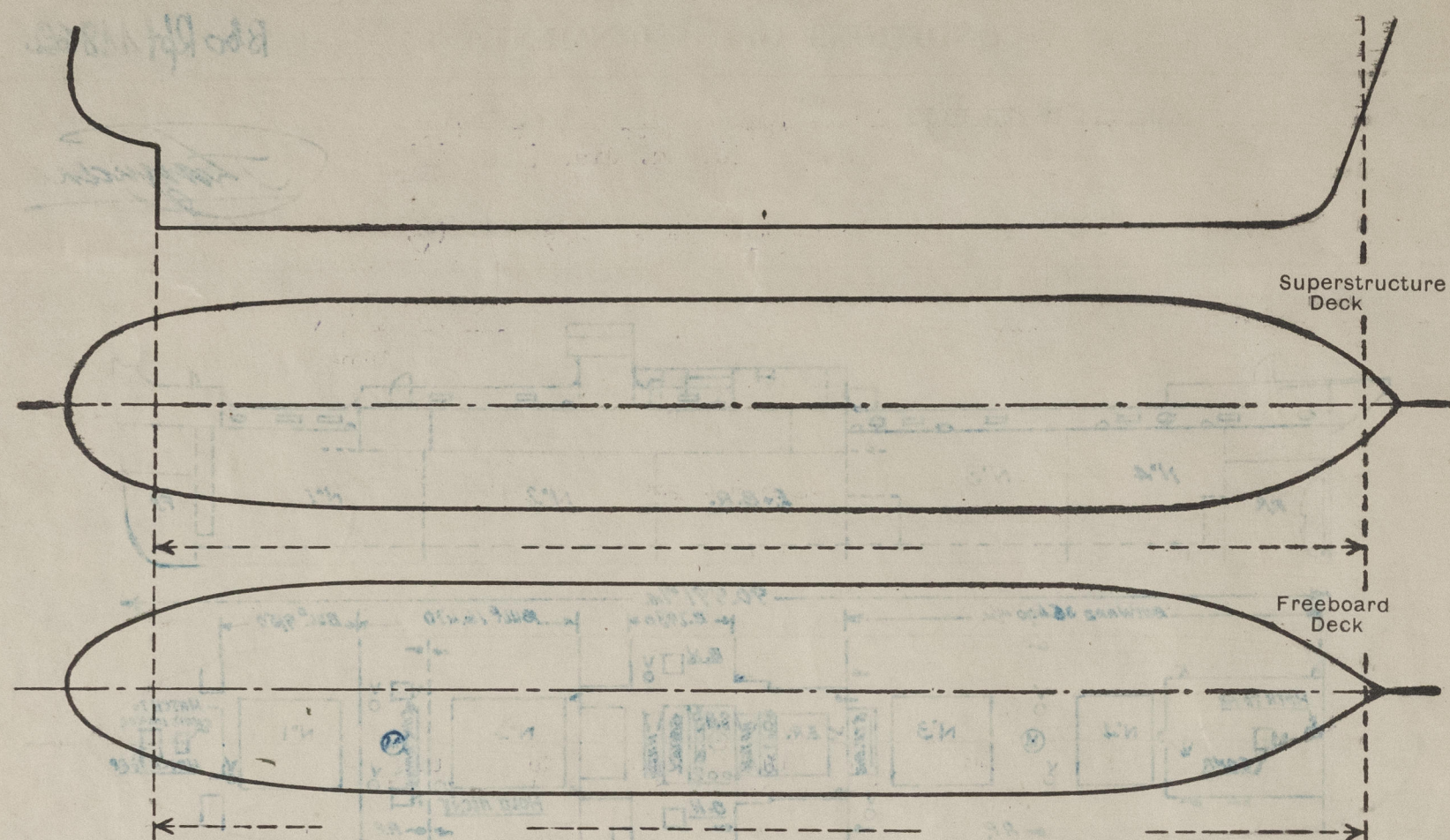
	Coaming mm.	Plating mm.	Stiffeners mm.	Spacing mm.	End Attachments of Stiffeners	Size of Openings mm.	Height of Sills mm.	Height, Beam to Beam mm.
Superstructure Poop/Bulkhead ...	10	8	90x90x10	900	riveted	140 x 600	480	2200
Raised Quarter Deck Bulkhead and combined	11	11	Deep web with intermediate stiffeners					
Bridge, After Bulkhead ...			of L 90x75x12	790	do	-	-	-
Bridge, Forward Bulkhead...	11	11	do. do.	850	do	-	-	-
Forecastle Bulkhead...	Open							
Trunk, Aft ...	-							
Trunk, Forward ...	-							
Exposed Machinery Casings on Free- board or Raised Quarter Decks...	-							
Exposed Machinery Casings on Super- structure Decks ...	12	12	L 100x65x8	1100	do	1450x600	450	2140
Machinery Casings within Superstruc- tures not fitted with Class I Closing Appliances ...	-							
Deckhouses and Pump Room Entrances	-							

Particulars of Closing Appliances (state if capable of being manipulated from both sides).

Superstructure Poop/Bulkhead ...	Hinged steel door operated both sides (Class I)
Raised Quarter Deck Bulkhead and combined	No openings ✓
Bridge, After Bulkhead ...	
Bridge, Forward Bulkhead ...	" " ✓
Forecastle Bulkhead ...	Open ✓
Exposed Machinery Casings on Free- board or Raised Quarter Decks...	-
Exposed Machinery Casings on Super- structure Decks ...	Hinged steel door operated both sides. ✓
Machinery Casings within Superstruc- tures not fitted with Class I Closing Appliances ...	-
Deckhouses and Pump Room Entrances	-

PARTICULARS OF PROTECTION TO OPENINGS, ETC.

The following diagrams should be used to indicate the positions of cargo and coaling hatchways, gangway, cargo and coaling ports, side scuttles, scuppers, ventilators, companionways, etc., which would affect the seaworthiness of the ship :-



Particulars of fiddle, funnel and ventilator coamings, engine room skylight and other openings in machinery casing tops and their means of closing :-

Fiddle, funnel, vent. coamings and E.R. strongly constructed of steel. Skylight fitted with hinged steel flaps with strong bulleyes lights. Fiddle opening provided with hinged steel cover.

Particulars of Flush Bunker Scuttles :- Not fitted. ✓

Particulars of Companionways :-

(including those incorporated in deckhouses and masthouses) A) 2 strong steel companionways on bridge deck forward leading crews accommodations. 50 mm. hinged wood doors operated both sides, 1400 x 710 mm. Sill 380 mm.
B) 1 strong steel companionway on poop superstructure deck leading accommodation. 40 mm. wood door operated both sides. 1400 x 600 mm. Sill 280 mm. ✓

Particulars of Ventilators in exposed positions on freeboard and superstructure decks :-

Raised fore deck.- 1 - 300 mm. dia. x 9 mm. High 2570 efficiently staged.
Bridge Deck.- 2 - 230 mm. dia. x 9 mm. - High 808 mm. ✓
1 - 620 mm. dia. x 10 mm. - High 915 mm. ✓

Fiddle.- 2 - 600 mm. dia. x 10 mm. B.R. - High 800 mm. ✓
4 - 300 mm. dia. x 9 mm. mushroom fitted with screw tops. height
3 - 390 mm. dia. x 10 mm. E.R. - High 800 mm. ✓

R.Q. Deck Aft.- 3 - 300 mm. dia. x 9 mm. - High 810 mm. ✓ 915
1 - 170 mm. dia. x 9 mm. - High 915 mm. ✓

All vent are provided with wood plugs and canvas or steel watertight covers.

Particulars of Air Pipes in exposed positions on freeboard, raised quarter, or superstructure decks :-

Forecastle.- 1 - 90 mm. dia. - High 915 mm. ✓

Bridge Deck.- 5 - 90 mm. dia. - High 540 mm. ✓

R.Q. Deck Aft.- 8 - 90 mm. dia. - High 770 mm. ✓

All air pipes are provided with steel screw plugs.

Particulars of Gangway Cargo and Coaling Ports :- None fitted.

Particulars of Scuppers and Sanitary Discharge Pipes :-

Raised fore deck.- 1 - deck scupper cut through stringer bar (p. & s.)
1 - sanitary discharge, 100 mm. dia. (p. & s.) overboard below raised fore deck.

Bridge Deck.- 2 - deck scuppers cut through stringer bar (p. & s.)
1 - sanitary discharge, 100 mm. dia. (p. & s.) overboard above freeboard deck.

R.Q. deck aft.- 4 - deck scuppers cut through stringer bar (p. & s.)
2 - sanitary discharge, 100 mm. dia. (s.s.) overboard below R.Q. deck aft.

Compensation is provided in way of all scuppers. ✓

Sanitary discharges are provided with brass storm valve at ship side.

Particulars of Side Scuttles & Deadlights :-

Above Freeboard deck.- 2 - 230 mm. dia. opening gunmetal side scuttles (p. & s.) to fore castle space with hinged cast steel deadlights. ✓
2 - 230 mm. dia. opening gunmetal side scuttles (p. & s.) to crews accommodation in bridge space with hinged cast steel deadlights. ✓

Vertical distance of Sill of lowest Side Scuttle above top of keel 8870 mm. ✓

Distance from amidships to centre of lowest Side Scuttle 23800 mm.

Particulars of Guard Rails & Bulwarks :-

Raised fore deck.- Bulwark 1113 mm. x 7 mm. with 150 x 80 x 10 mm. rail bar and 200 x 190 x 12 bulb bar stays 2438 mm. apart.

Bridge deck and R.Q. deck aft.- Bulwark 950 mm. x 7 mm. with 150 x 80 x 10 mm. rail bar and 170 x 80 x 10.5 mm. bulb bar stays 2438 mm. apart.

Forecastle.- 2 guard rails with stanchions 1000 mm. high and 1200 mm.

Particulars of Gangways, Lifelines, etc. :-

Lifelines fitted as considered necessary. ✓

Particulars of Freeing Arrangements.

	Length of Bulwark	Height of Bulwark	Size of Freeing Ports	Number each side	Area each side	Rule area each side
After Well ...	36490 mm. ✓	950 mm.	900 x 570 mm. 290 x 220 mm.	4 3	2.05 m ² . 0.07 m ² .	2.12 m ² . 2.12 m ² .
Forward Well ...	9150 mm. ✓	1113 mm.	890 x 590 mm. 210 x 190 mm.	2 1	1.05 m ² . 0.03 m ² .	1.08 m ² . 0.883 m ² .

State position of each freeing port ... After Well :- From bridge aft. bkhd. 4267, 10973 & 20740 - 280 mm. above deck (F. and A. position and height above deck edge) Forward Well :- From bridge front bkhd. 2134 and 3962 - 305 mm. above deck.

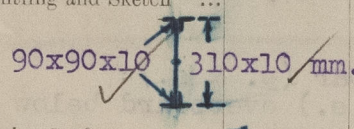
State whether the freeing ports are fitted with shutters, bars, or rails, and give particulars of such :- Horizontal bars.

Additional area where sheer is less than standard.

1.213
1.22
2.433
0.61 x 16.44
10.35
1.883
0.61 x 1.15
0.7015

PARTICULARS OF PROTECTION TO OPENINGS, ETC.

HATCHWAYS ON FREEBOARD AND SUPERSTRUCTURE DECKS.

		R.F.Dk.	B.Dk.	R.Q.Dk.	Aft.	Raised F.Dk.	Tiddley	Bridge Deck		
Description of Hatchway		No.1	No.2	No.3	No.4	Small hatches to R.P. to C. Locker	Bunker Saddle	Bunker Centre	Hatches P&S	
Dimensions of Hatchway		610x427	854x427	732x427	610x427	112x136	051x067	213x43	183x43	113x089
COAMINGS	Height above Deck	970 ✓	830 ✓	830 ✓	810 ✓	460 ✓	460 ✓	460 ✓	1270 ✓	460 ✓
	Thickness { Sides	12.5 ✓	12.5 ✓	12.5 ✓	12.5 ✓	10 ✓	10 ✓	10 ✓	10 ✓	10 ✓
	Thickness { Ends	12.5 ✓	11 ✓	12.5 ✓	12.5 ✓					
	Stiffeners { Sides		180x75x12 B.A. ✓							
Brackets, Stays { Ends	190x90 ✓	150x70x9 B.A. ✓								
HATCH BEAMS	Number	1530	1200	1450	1530					
	Spacing									
	Scantling and Sketch						None fitted			
Bearing Surface	70 x 50 mm.									
FORE AND AFTERS	Number									
	Spacing									
	Unsupported Lengths									
Scantling* and Sketch	None fitted									
Bearing Surface										
HATCH COVERS	Material	Wood	Wood	Wood	Wood	Wood	Wood	Wood	Steel	Wood
	Thickness	65 ✓	65 ✓	65 ✓	65 ✓	65 ✓	65 ✓	65 ✓	10 ✓	65 ✓
	How fitted	F&A ✓	F&A ✓	F&A ✓	F&A ✓	F&A ✓	F&A ✓	F&A ✓	Joint ✓	F&A ✓
	Bearing Surface	90 ✓	90 ✓	90 ✓	90 ✓	90 ✓	90 ✓	90 ✓		90 ✓
Spacing of Cleats	610 ✓	610 ✓	610 ✓	610 ✓	610 ✓	350 ✓	610 ✓	600 ✓	350 ✓	
Number of Tarpaulins	2 ✓	2 ✓	2 ✓	2 ✓	2 ✓	2 ✓	2 ✓	W.T. bolted	2 ✓	

*Are wood fore and afters steel shod at all bearing surfaces? -

Are battens and wedges efficient and in good condition? Yes ✓

Are tarpaulins in good condition and in accordance with rule requirements? Yes ✓

Are lashings provided in accordance with rule requirements? Yes ✓

Are wood covers fitted with galvanised end bands? Not fitted. *Galv end bands*

Particulars of any special features :— (Timber Deck-cargo Fittings, Skylights, Sewage Systems, Ash Ejectors, Rubbish Shoots, etc.)



© 2021

Lloyd's Register Foundation