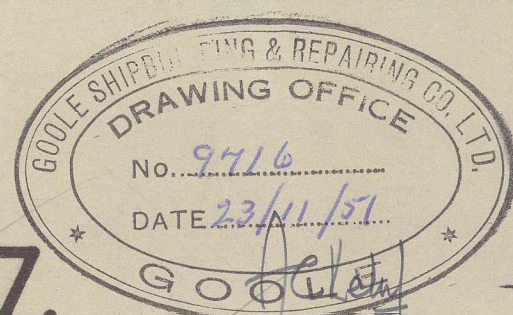


15 JAN 1952

SHIP Nos. 486/7.



DONKIN HYDRAULIC STEERING GEAR  
AND RUDDER CARRIER  
FITTED ON MAIN DECK.

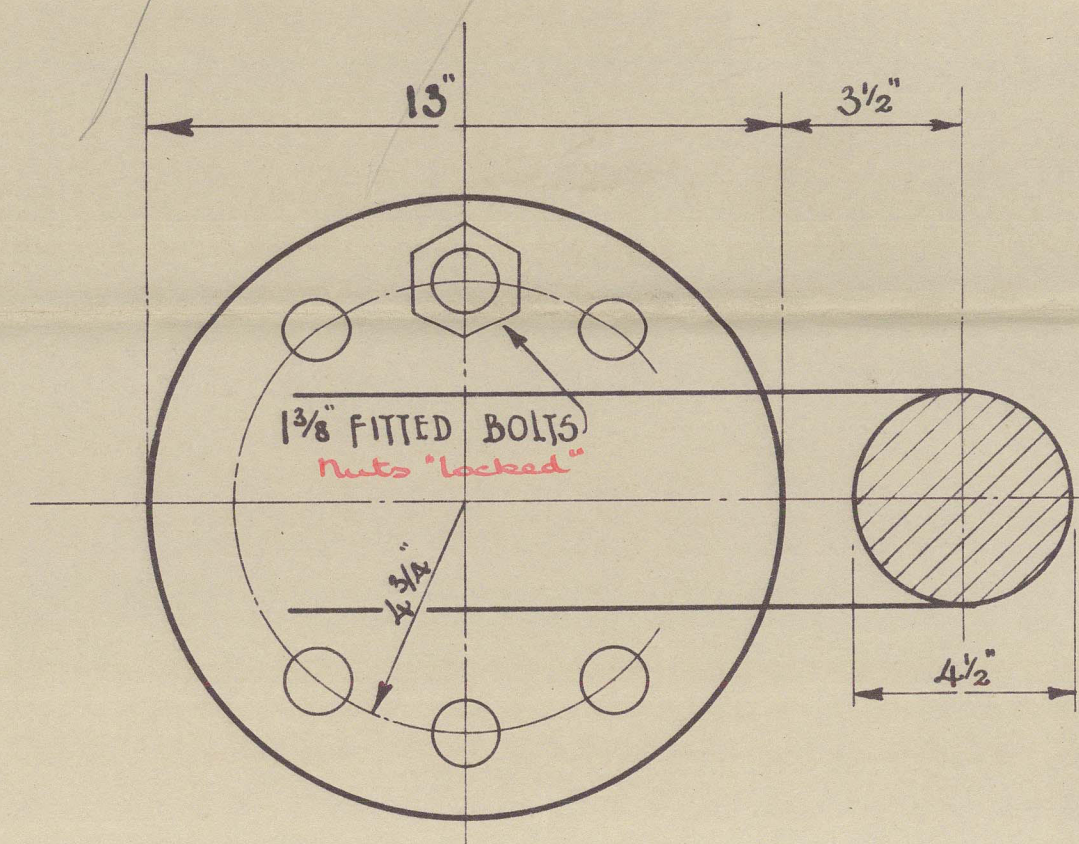
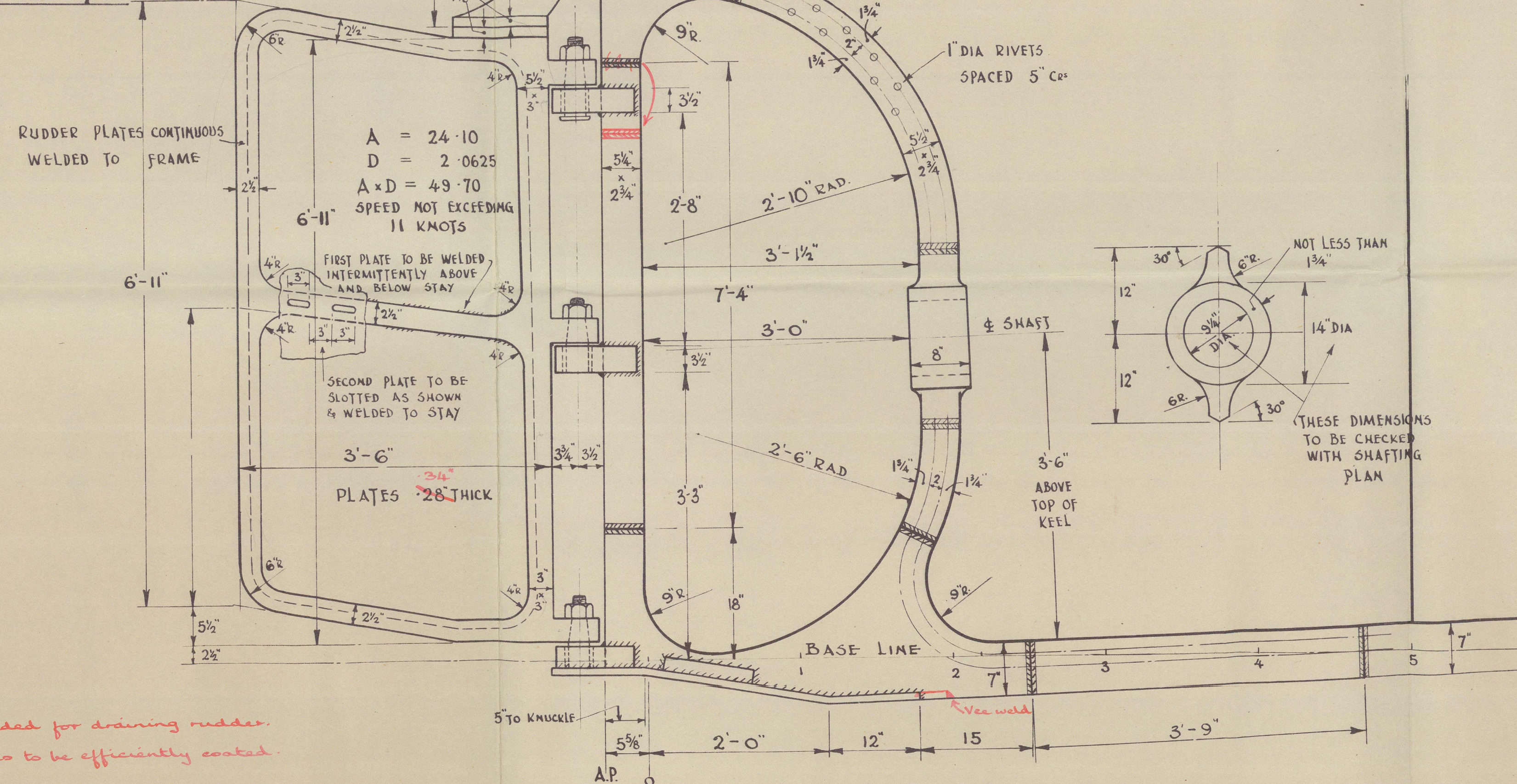
## STERNFRAME &amp; RUDDER.

SCALE: 1" = 1 FOOT. &amp; AS SHOWN.

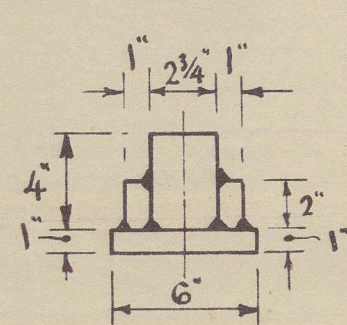
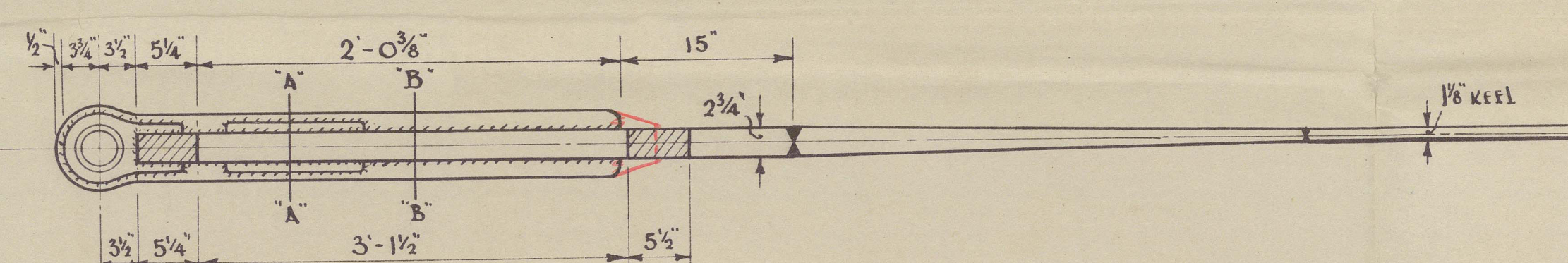
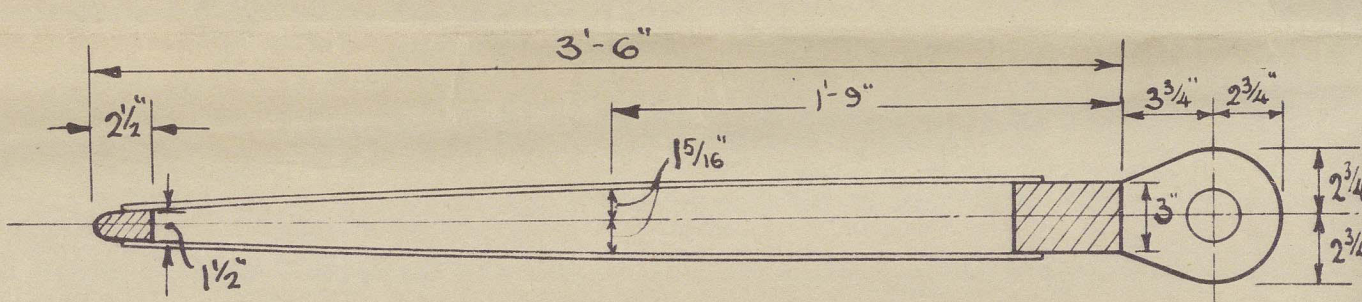
STERNFRAME FABRICATED OF MILD STEEL. WELDED.

RUDDER FRAME OF FORGED SCRAP STEEL.

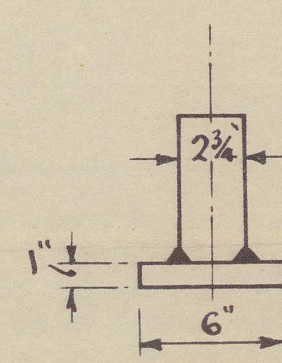
TO LLOYDS TESTS &amp; REQUIREMENTS.

COUPLING.  
Scale: 3" = 1 foot.

## SECTION THRO' RUDDER.



SECTION "A-A".

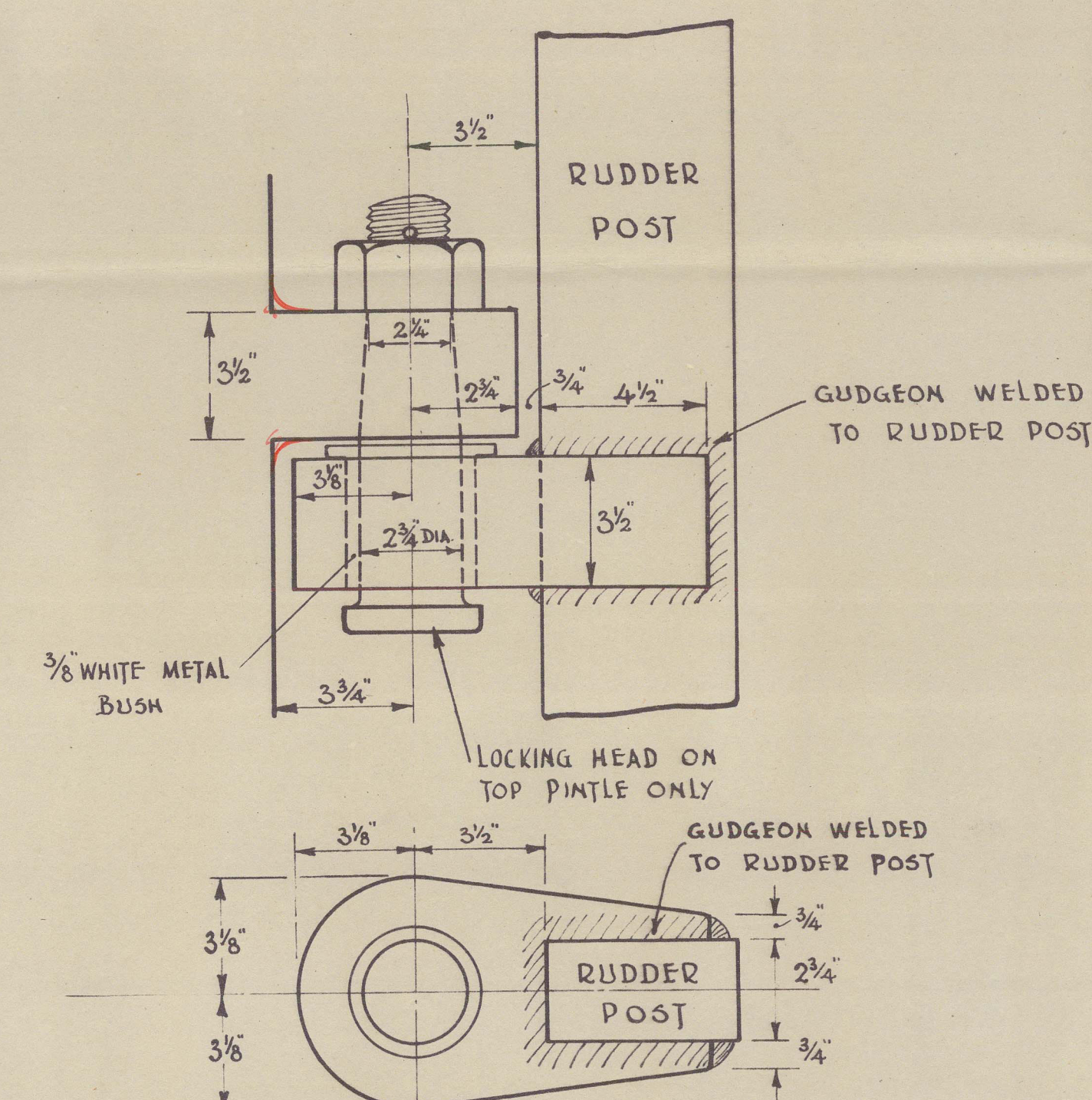
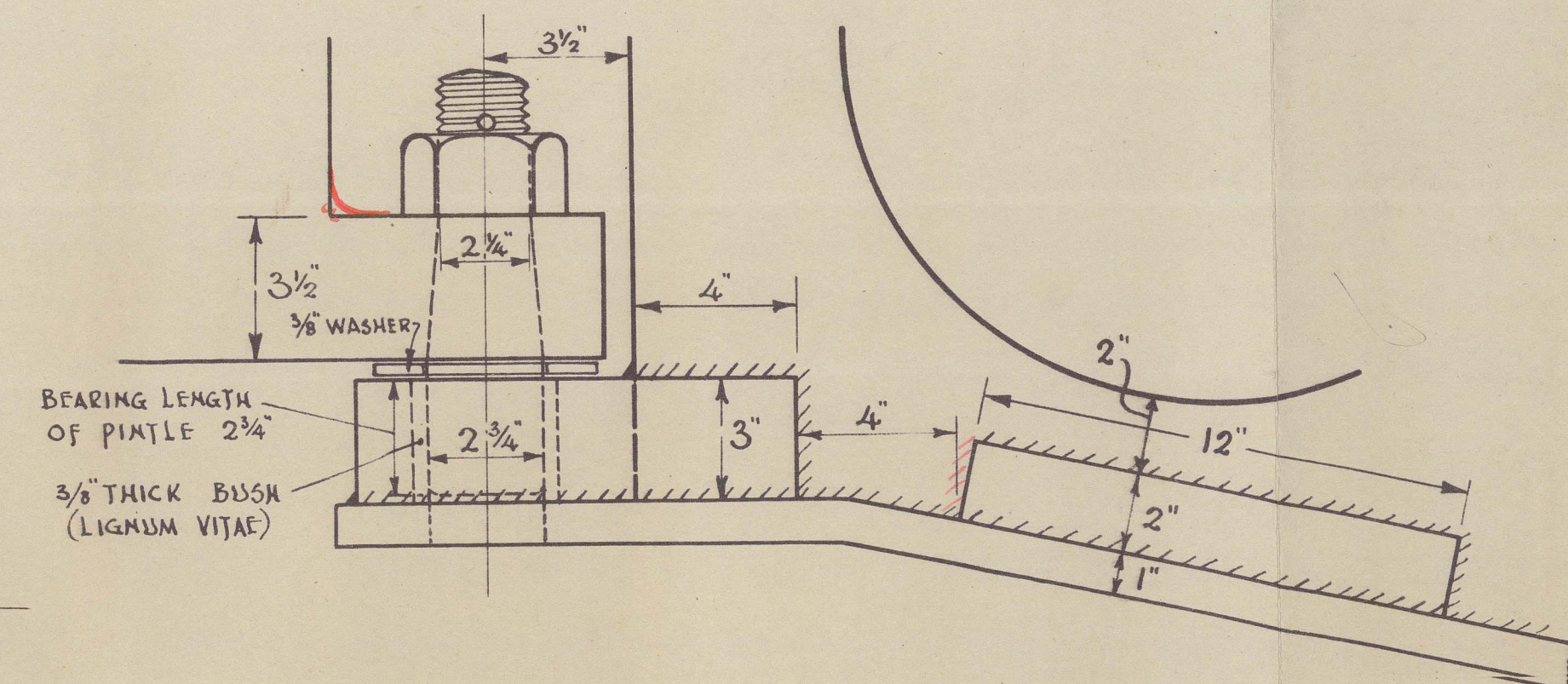


SECTION "B-B".

## WELDING DETAILS.


SKETCH	POSITION	GAUGE & RUN LENGTH	AMPS	ELECTRODES	REMARKS
	STERNFRAME BUTTS	4/6 1/2"	270/230	APPROVED GENERAL SERVICE	DOWN HAND WELD
	RUDDER ARMS TO PORT SIDE PLATE	4/5"	"	"	"
	SOLE PLATE CONNECTIONS	4/10"	"	"	"

To Surveyors satisfaction

UPPER & INTERMEDIATE PINTLES.  
Scale: 3" = 1 foot.DETAIL OF LOWER GUDGEON.  
Scale: 3" = 1 foot.

GOOLE SHIPBUILDING & REPAIRING Co. Ltd.  
GOOLE Drawn by: H.S. Checked by: Date: 23/11/51 YORKS

14/1/52

NORDELITE 

GOOLE S.B. & REP CO

WARD No 486

HULL T.E. REPORT No.

ORDS DEPT  
LONDON

7

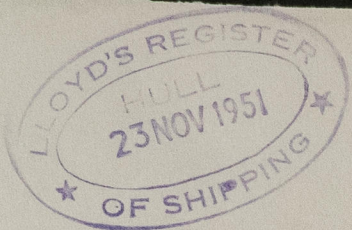
STERN FRAME & RUDDER.



© 2021

Lloyd's Register  
Foundation

011057-011061-0278



011057-011061-0278



© 2021

Lloyd's Register  
Foundation