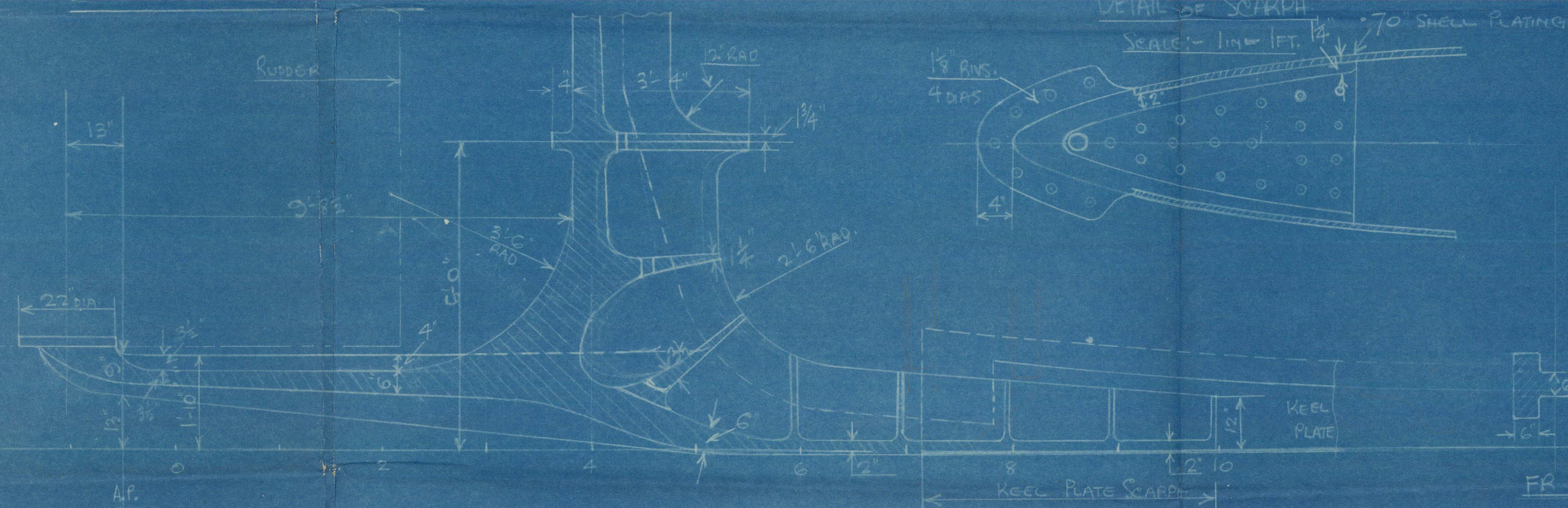


Q.S.S.

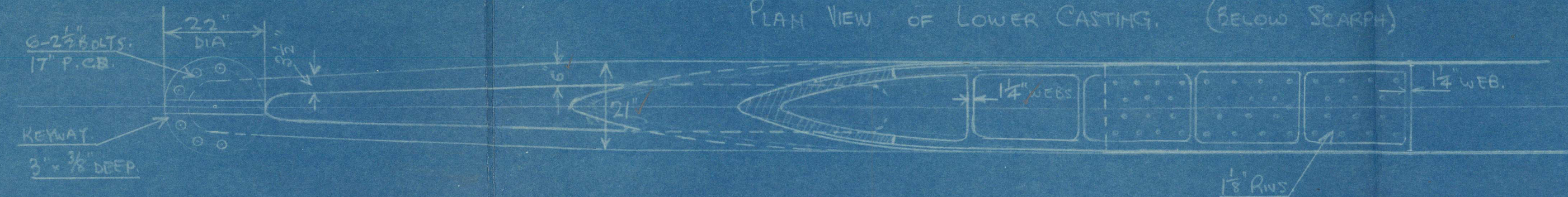
Nº 1 (WALKER YARD)

FLY TO PLAN OF STERN FRAME,  
SHOWING MODIFIED SOLEPIECE.

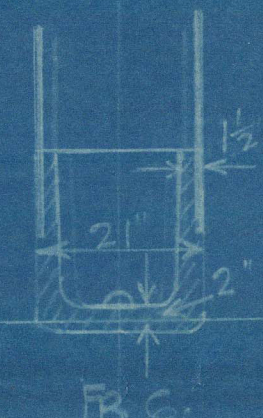
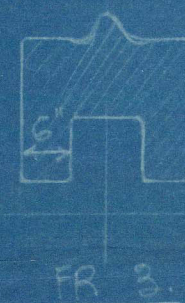
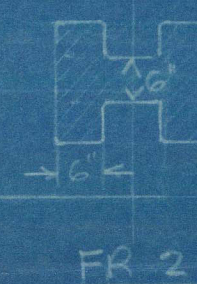
SCALE:-  $\frac{1}{2}$  IN = 1 FT



PLAN VIEW OF LOWER CASTING. (BELOW SCARP)



PLAN Nº 72.



SECTIONS THRO. SOLEPIECE.

16.6.30



Lloyd's Register Foundation



Vickers Armstrongs Ltd No 7 (High Walker Yard)

Qty to Plan of Stern frame showing  
Modified Sole Piece



Q.S.S. "MONARCH OF BERMUDA"

NEWCASTLE ON TYNE.

Report No. 87699

Vickers Armstrongs No 681  
Q.S.S. Queen of Bermuda.

Barrow Report No 2469

BOX NO. 2

PLAN NO. 26

011057

011061 - 0084



© 2021

Lloyd's Register  
Foundation