

Q. S. S. "MONARCH OF BERMUDA".

Q. S. S. No 1. (HIGH WALKER YARD).

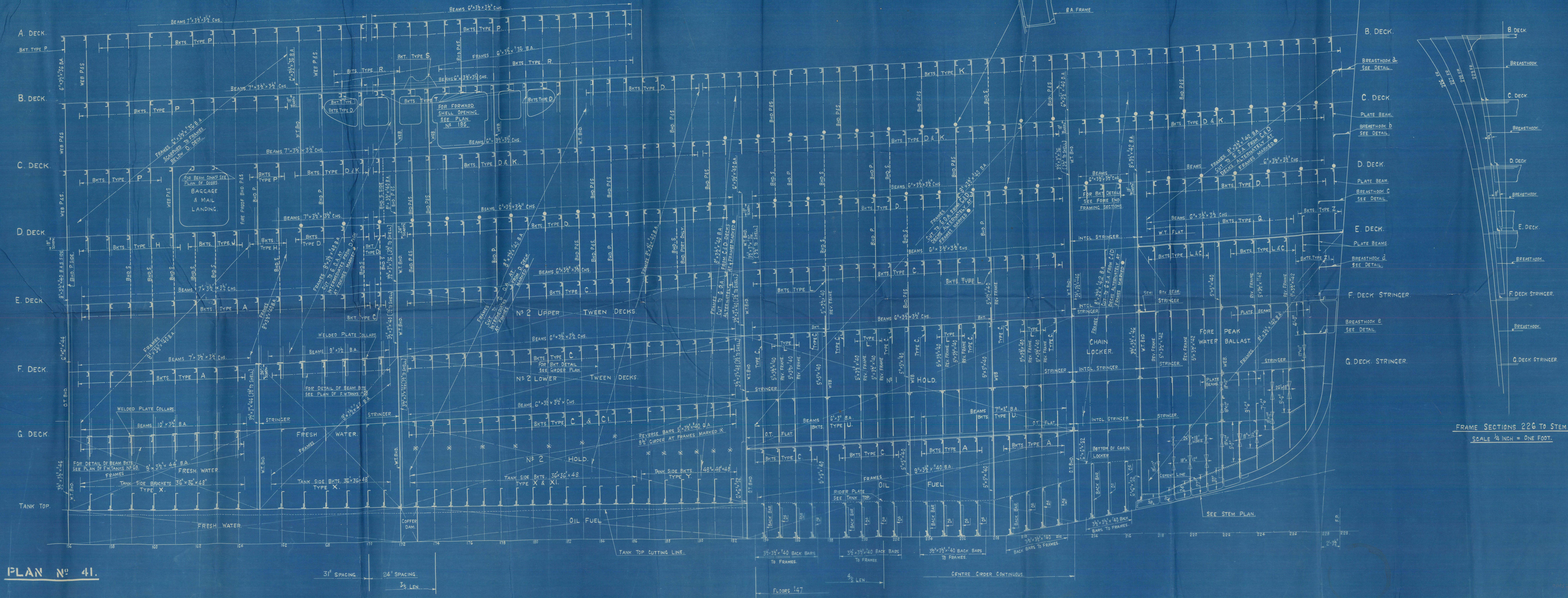
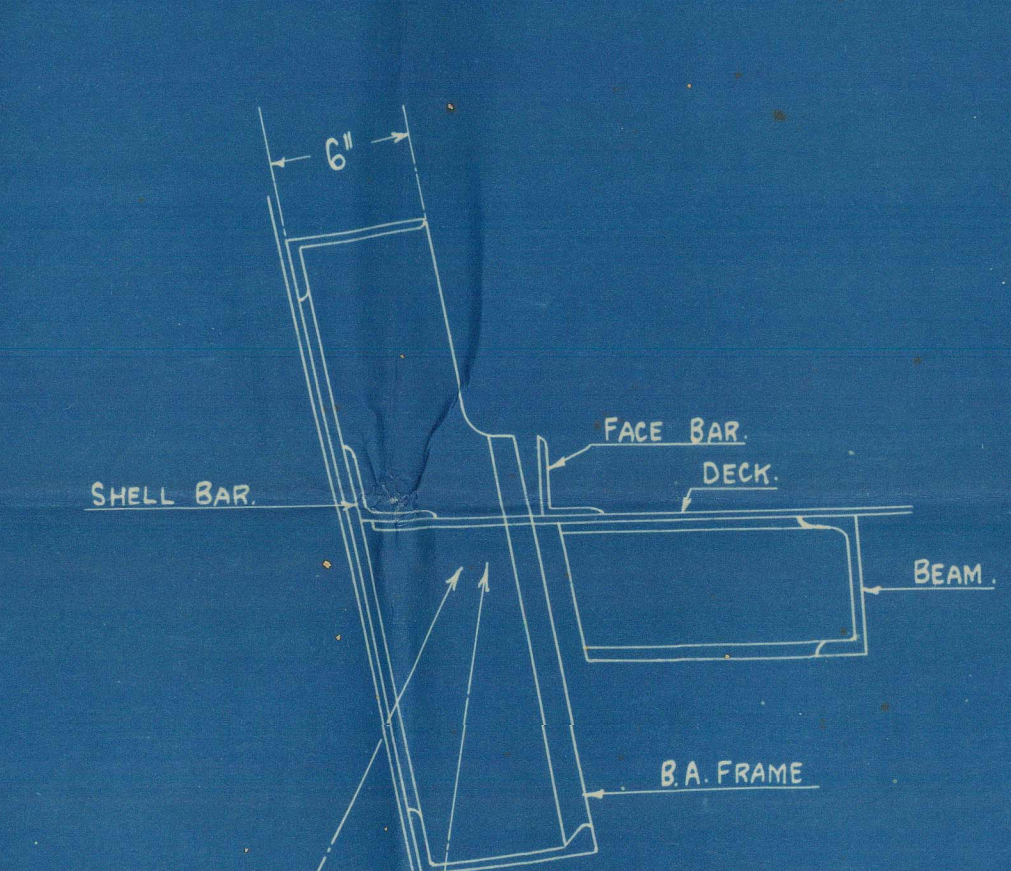
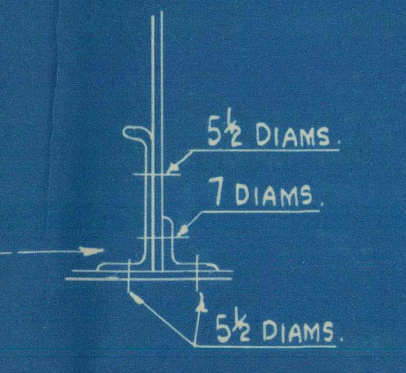
FORE END FRAMING.

SCALE: 1/4 INCH = ONE FOOT.

- 1. IN SEAMS OF SHELL PLATING WHERE FRAMES ARE JOGGLED 2 RIVETS ARE TO PASS THROUGH THE FRAME & SEAM, & IN SEAMS WHERE FRAMES ARE NOT JOGGLED ONE RIVET IS TO PASS THROUGH FRAME & SEAM.
- 2. FOR DETAILS OF BEAM KNEES & BRACKET CONNECTIONS SEE SEPARATE PLAN No 51.
- 3. FOR DETAILS OF PAINTING STRINGERS SEE SEPARATE PLAN No 68.
- 4. FOR DETAILS OF SIDE STRINGER IN FW TANK SEE SEPARATE PLAN No 69.
- 5. FOR DETAILS OF FORE END FLOORS SEE SEPARATE PLAN No 71.
- 6. FOR DETAILS OF BREASTHOOKS SEE SEPARATE PLAN No 68.

RIVETING LIST.

ITEM	DIAM. OF RIVET	SPACING	REMARKS
ORDINARY FRAMES IN WAY OF OIL FUEL TANK.	5/8"	5"	
ORDINARY FRAMES IN WAY OF FW TANKS.	5/8"	5"	
ORDINARY FRAMES IN WAY OF FORE PEAK TANK.	5/8"	5"	
ORDINARY FRAMES IN WAY OF 2 1/2" SPACING.	5/8"	5"	
ORDINARY FRAMES IN WAY OF 2 1/2" SPACING.	5/8"	5"	
O.T. BULKHEAD FRAMES TO SHELL.	5/8"	5"	2 ROWS REELED.
O.T. BULKHEAD FRAMES TO BULKHEAD.	5/8"	5"	2 ROWS REELED.
W.T. BULKHEAD FRAMES TO SHELL.	5/8"	5"	
W.T. BULKHEAD FRAMES TO BULKHEAD.	5/8"	5"	
ORDINARY FRAMES TO FLOORS IN FORE PEAK TANK.	5/8"	5"	
BACK BARS TO FRAMES FORWARD OF BULKHEAD 193.	5/8"	5"	
REVERSE FRAMES TO FRAMES IN NO 1 HOLD.	5/8"	5"	
REVERSE FRAMES TO FRAMES IN FORE PEAK TANK.	5/8"	5"	
WEB FRAME FRAME TO SHELL IN NO 1 HOLD.	5/8"	5"	2 ROWS REELED.
WEB FRAME FRAME TO SHELL IN OIL FUEL TANK.	5/8"	5"	2 ROWS REELED.
WEB FRAME FRAME TO WEB IN NO 1 HOLD.	5/8"	5"	2 ROWS REELED.
WEB FRAME FRAME TO WEB IN OIL FUEL TANK.	5/8"	5"	2 ROWS REELED.
WEB FRAME FRAME TO WEB IN FORE PEAK TANK.	5/8"	5"	2 ROWS REELED.
TWEEN DECK WEBS TO SHELL.	5/8"	5"	
TWEEN DECK WEBS TO WEB.	5/8"	5"	
MINOR STEEL BULKHEADS TO FRAMES.	5/8"	5"	



BOX NO. 2
PLAN NO. 6

Fore End Framing

As Built

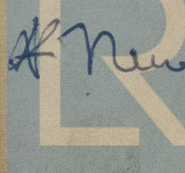
ARKADIA
WK 1083

Monarch of Bermuda

Nov. 1931

Q.S.S. "MONARCH OF BERMUDA"
NEWCASTLE ON TYNE.

Report No. 87699



© 2021

Australia
Lloyd's Register
Foundation

011057-011061-0082