

Lloyd's Register of Shipping.

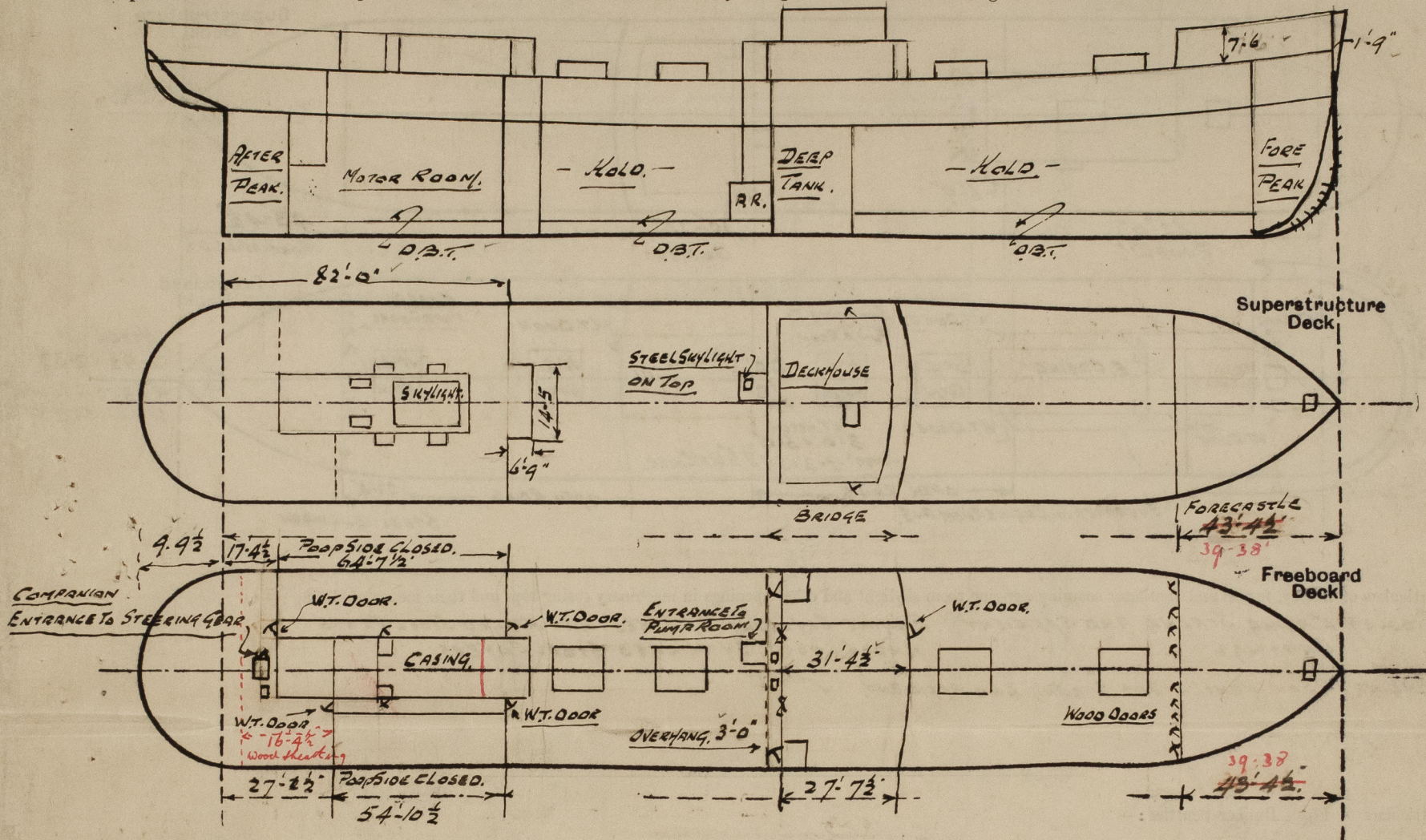
SURVEYS FOR FREEBOARD.

(CONDITIONS OF ASSIGNMENT.)

16468

Ship's Name M/S "CERION" SMITH'S No 1054. Port of Survey MIDDLESBROUGH.
 Official Number 166610 Surveyor's Signature Cyril B. Lower.
 Nationality and Port of Registry British. London. Date of Survey WHILE BUILDING. 1938.

Disposition and dimensions of superstructures, trunks, deckhouses and machinery casings to be inserted in the diagrams and tabular statement:—



Particulars of Superstructures, Trunks, Casings, Deckhouses.

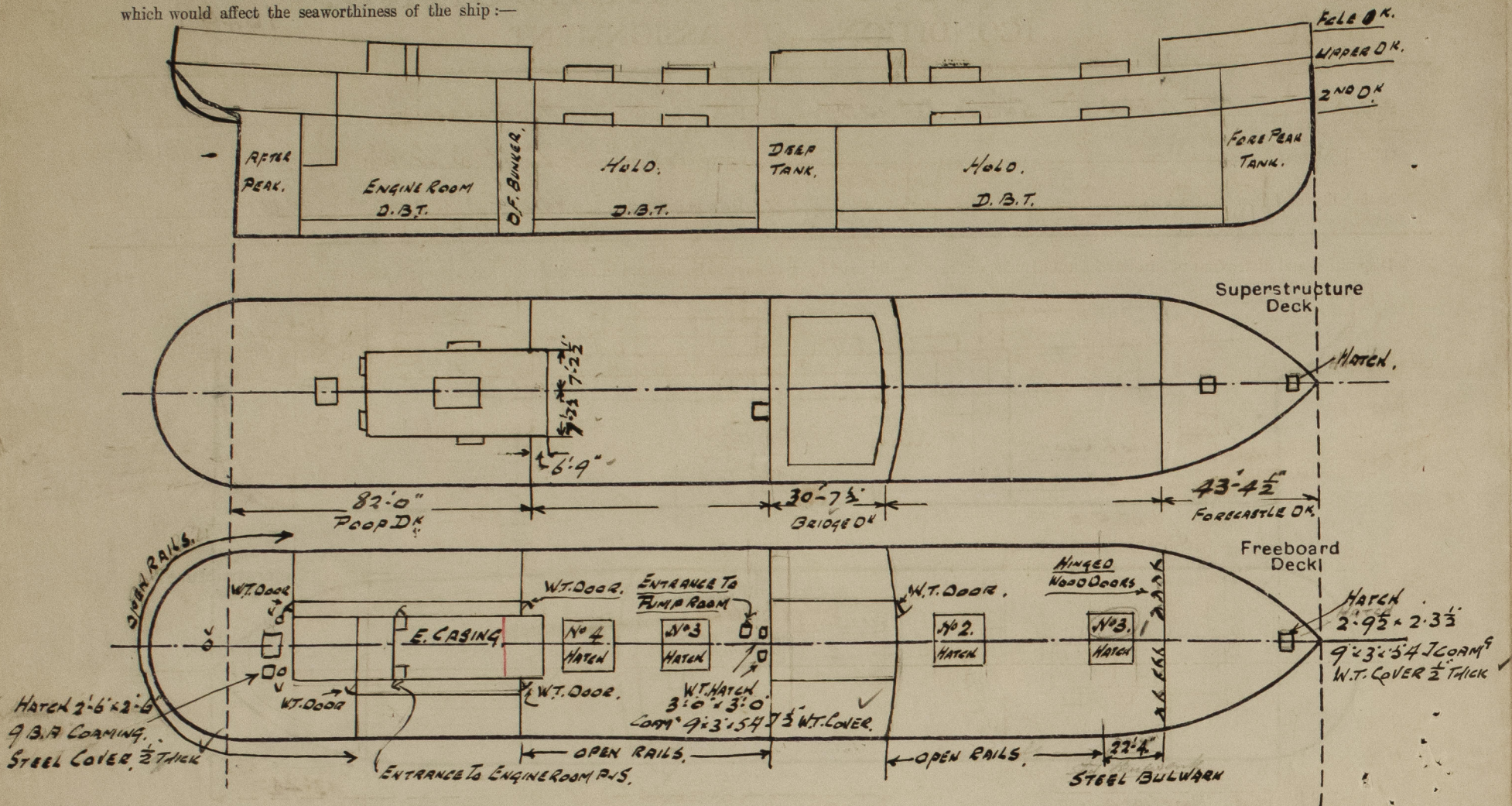
	Coaming	Plating	Stiffeners	Spacing	End Attachments of Stiffeners	Size of Openings	Height of Sills	Height of Casings
Poop Bulkhead ... <i>Form Aft.</i>	1'-6" x 40"	32" x 34"	5' x 3" x 40"	27" x 36"	LUGS ON TOP & BOTTOM	4'-10" x 2'-7"	1'-6"	7'-6"
Raised Quarter Deck Bulkhead ...	1'-6" x 32"	24"	3' x 2 1/2" x 32"					7'-6"
Bridge, After Bulkhead ...	1'-6" x 32"	28"	4' x 2 1/2" x 32"	33"	LUGS ON TOP & BOTTOM	4'-3 1/2" x 3'-1 1/2" off	1'-11"	7'-6"
Bridge, Forward Bulkhead ...	1'-6" x 44"	40"	8' x 3" x 32"	30"	LUGS ON TOP & BOTTOM	5'-2 1/2" x 2'-5 1/2" off	1'-6"	7'-6"
Forecastle Bulkhead ...	2'-0" x 32"	28"	4' x 2 1/2" x 36"	27"		4'-5" x 2'-3" off	2'-0"	7'-6"
Trunk, Aft ...						4'-5" x 2'-6" off		
Trunk, Forward ...								
Exposed Machinery Casings on Freeboard or Raised Quarter Decks ...								
Exposed Machinery Casings on Superstructure Decks ...	2'-6" x 26"	26"	3'-2 1/2" x 28"	25 1/2"	BKS ON TOP & RUN DOWN			2'-6"
Machinery Casings within Superstructures not fitted with Class I Closing Appliances ...								
Deckhouses on Flush Deck Ships ...								

Particulars of Closing Appliances (state if capable of being manipulated from both sides).

Poop Bulkhead ...	HINGED WATER TIGHT DOORS. FORE END & AFTER END. P.S.
Raised Quarter Deck Bulkhead ...	
Bridge, After Bulkhead ...	HINGED WATER TIGHT DOOR
Bridge, Forward Bulkhead ...	HINGED WATER TIGHT DOORS
Forecastle Bulkhead ...	HINGED W.T. DOOR
Exposed Machinery Casings on Freeboard or Raised Quarter Decks ...	HINGED WOOD DOORS. of hard wood capable of being operated from both sides.
Exposed Machinery Casings on Superstructure Decks ...	NO OPENINGS.
Machinery Casings within Superstructures not fitted with Class I Closing Appliances ...	
Deckhouses on Flush Deck Ships ...	

PARTICULARS OF PROTECTION TO OPENINGS, ETC.

The following diagrams should be used to indicate the positions of cargo and coaling hatchways, gangway, cargo and coaling ports, ventilators, companionways, etc., which would affect the seaworthiness of the ship:—



Particulars of fiddley, funnel and ventilator coamings, engine room skylight and other openings in machinery casing tops and their means of closing :—

PROOFEY CASING STRONG AND EFFICIENT, ENGINE SKYLIGHT OF STEEL WITH HINGED STEEL FLAPS.
GRATINGS - - - AND CLOSED BY HINGED STEEL COVERS. ✓

ENGINE ROOM VENTILATORS STRONG AND EFFICIENT. ✓

Particulars of Flush Bunker Scuttles :—

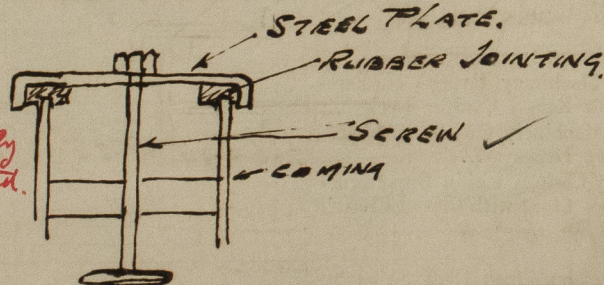
NONE FITTED. ✓

Particulars of Companionways :—

Particulars of Companionways:—
 ENTRANCE TO STEERING GEAR SPACE ON FREEBOARD DECK AFT. W.T. DOOR 5'-6" x 2'-3" CORNING 1'-6" PLATING $\frac{3}{8}$ "
 STIFFENERS 4" x 3" x 40' SPACED 3'-0" APART. ✓
 ENTRANCE TO PUMP ROOM MIDSHIP, ON FREEBOARD DECK W.T. DOOR 5'-0 1/4" x 2'-3" CORNING 1/8" PLATING $\frac{3}{8}$ "
 STIFFENERS 4" x 3" x 40' SPACED 3'-0" APART. ✓

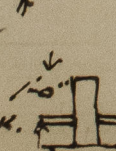
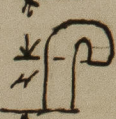
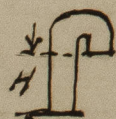
OFF Particulars of Ventilators in exposed positions on freeboard and superstructure decks :—

- | Particulars of Ventilators in exposed positions on freeboard and superstructure decks:- | | | |
|---|---|----------------|-------------|
| ① | FORECASTLE DECK To FORE PEAK PUMP ROOM. | 8" DIA COAMING | 39" x 32" ✓ |
| ② | " " " " STORE GOOSE NECK | 4" DIA | 38" HIGH. ✓ |
| ⑧ | BRIDGE DECK To BRIDGE SPACE. | 6" DIA COAMING | 33" x 32" ✓ |
| ⑧ | POOP DECK To POOP SPACE. | 8" " " | 33" x 32" ✓ |
| ⑥ | " " To MOTOR ROOM. | 24" " " | 48" x 40" ✓ |
| ④ | " " To POOP SPACE. | 14" " " | 48" x 38" ✓ |
| ② | " " REFRIGERATING SPACE | 8" " " | 48" x 32" ✓ |
| ① | " " To MOTOR TWIN D ^g SPACE. | 12" " " | 48" x 34" ✓ |
| ① | " " " " " " " " | 10" " " | 48" x 32" ✓ |
| ③ | " " " " " " " " | 12" " " | 33" x 34" ✓ |
| ④ | " " POOP PASSAGE | 8" " " | 33" x 32" ✓ |
| ① | FREEBOARD DECK To STEERING GEAR. | 8" " " | 36" x 32" ✓ |
| ① | " " " " " " " " | 12" " " | 36" x 32" ✓ |
| ② | " " To STORE GOOSE NECK. | 6" DIA | 36" HIGH ✓ |
- ALL VENTILATOR COAMINGS CLOSED BY PLATES
- SCREWED DOWN
- STEEL PLATE.
- RUBBER JOINTING.
- SCREW ✓
- COAMING
- Efficiently supported.



Particulars of Air Pipes in exposed positions on freeboard, raised quarter, or superstructure decks :—

- 3" DIA AIR PIPE To FORE PEAK GOOSE NECK 2'-4" HIGH ON FLE DECK P+S. ✓
 3" - SOUNDING PIPE To FORE PEAK 1'-0" HIGH ON FLE DECK, S.S. ✓
 5" - AIR PIPE To O.B.T. GOOSE NECK 6'-9" UPPER DECK, P+S. ✓
 2" - SOUNDING PIPES To O.B.T. 1'-0" HIGH UPPER DECK, 12 OFF. ✓
 5" - AIR PIPES To O.B.T. GOOSE NECK. 2'-0" UPPER DECK 6 OFF. ✓
 5" - - - To DEEP TANK - - - 6'-0" - - - P+S. ✓
 4" - - - To CROSS BUNKER - - - 6'-3" - - - P+S. ✓
 2 1/2" - - - To O.B.T. IN MACHINERY SPACE GOOSE NECK 4'-0" POOP DECK 6 OFF. ✓
 2 1/2" - - - - - - - 4'-0" CRUISING TOP. ✓
 2 1/2" - - - To AFTER PEAK GOOSE NECK 2'-0" HIGH UPPER DECK ✓
 2" - SOUNDING PIPE To BILGES 1'-0" UPPER DECK 4 OFF. ✓ DEC



D.B BALLAST AIR PIPES
NINTEO STEEL PLATES WITH LOCKING PIN
V 7 GRUEE GRASS PLATES ✓

D.B. AIR PIPES TO OIL FUEL/OIL BRICATING
TANK GAUGE & PERFORATED BRASS PLATE

SOUNDING PIPES
BRASS SCREW CAP - CHAIN 1/4 TOP.

Particulars of Gangway Cargo and Coaling Ports:—

Particulars of Scuppers and Sanitary Discharge Pipes :—

SANITARY DISCHARGE PIPES, CAST STEEL NON RETURN VALVES ON SHIP'S SIDE AND EFFICIENT TEAR ON INNER END, ALL DISCHARGING BELOW FREEBOARD DECK, DISCHARGES FROM POOP SPACE FITTED (IN ADDITION TO NON RETURN VALVE) WITH GATE VALVE. ✓

Particulars of Side Scuttles :—

SIDE SCUTTLES IN POOP, BRIDGE & FORECASTLE FITTED WITH HINGED DEADLIGHTS.
" " " STEERING GEAR SPACE AFT " " " "

SIDE SCUTTLES OF SUBSTANTIAL CONSTRUCTION

Vertical distance of Sill of lowest Side Scuttle above top of keel

23-8"

Particulars of Guard Rails :—

GUARD RAILS ON FREEBOARD DECK POOP BRIDGE FORECASTLE DECKS 3 RODS, 3'7" HIGH STANCHIONS 4'-6" APART.

Particulars of Gangways, Lifelines, etc. :—

LIFELINES FITTED IN FORE AND AFTER WELLS.

State position of each freeing port	{	After Well :—
(F. and A. position and height above deck edge)				Forward Well :—

State whether the freeing ports are fitted with shutters, bars, or rails, and give particulars of such:—

Additional area where sheer is less than standard.

PARTICULARS OF PROTECTION TO OPENINGS, ETC.

HATCHWAYS ON FREEBOARD AND SUPERSTRUCTURE DECKS.										
FREEBOARD DECK.										
Description of Hatchway		No. 1	No. 2	No. 3	No. 4					
Dimensions of Hatchway		10'-0" x 12'-0"	10'-0" x 12'-0"	10'-0" x 12'-0"	10'-0" x 12'-0"	✓				
COAMINGS	Height above Deck	30"	30"	30"	30"	✓				
	Thickness	44	44	44	44					
	Sides	44	44	44	44					
	Ends	44	44	44	44					
Stiffeners		7 x 44	7 x 44	7 x 44	7 x 44					
Brackets, Stays		2 OFF SIDES AND ENDS.								
HATCH BEAMS	Number	✓	✓	✓	✓					
	Spacing									
	Scantling and Sketch									
	Bearing Surface									
FORE AND AFTERS	Number									
	Spacing									
	Unsupported Lengths									
	Scantling and Sketch									
Bearing Surface										
HATCH COVERS	Material	STEEL	STEEL	STEEL	STEEL					
	Thickness	1/2"	1/2"	1/2"	1/2"					
	How fitted	with B.A. Scaff.		6" x 3" x 1/4"						
	Bearing Surface	W.T. & SCREW BOLTS 15 APART.								
Spacing of Cleats		✓	✓	✓	✓					
Number of Tarpaulins		✓	✓	✓	✓					
<p>*Are wood fore and afters steel shod at all bearing surfaces? ✓</p> <p>Are battens and wedges efficient and in good condition? ✓</p> <p>Are tarpaulins in good condition and in accordance with rule requirements? ✓</p> <p>Are lashings provided in accordance with rule requirements? ✓</p>										

Particulars of any special features :—

Endorsement at first survey and at surveys for renewal of Certificate :—

The fittings and appliances are in accordance with the particulars shown on this form (or as now modified) and are in good condition.

