

— STERNPOST & RUDDER N° 674 —

— SCALE 1 INCH=ONE FOOT. —

— W. SIMONS & CO. LTD —

— LONDON WORKS. —

— R E N F R E W . —

STEERING CHAIN $1\frac{3}{16}$ " DIAR SHORT LINK.

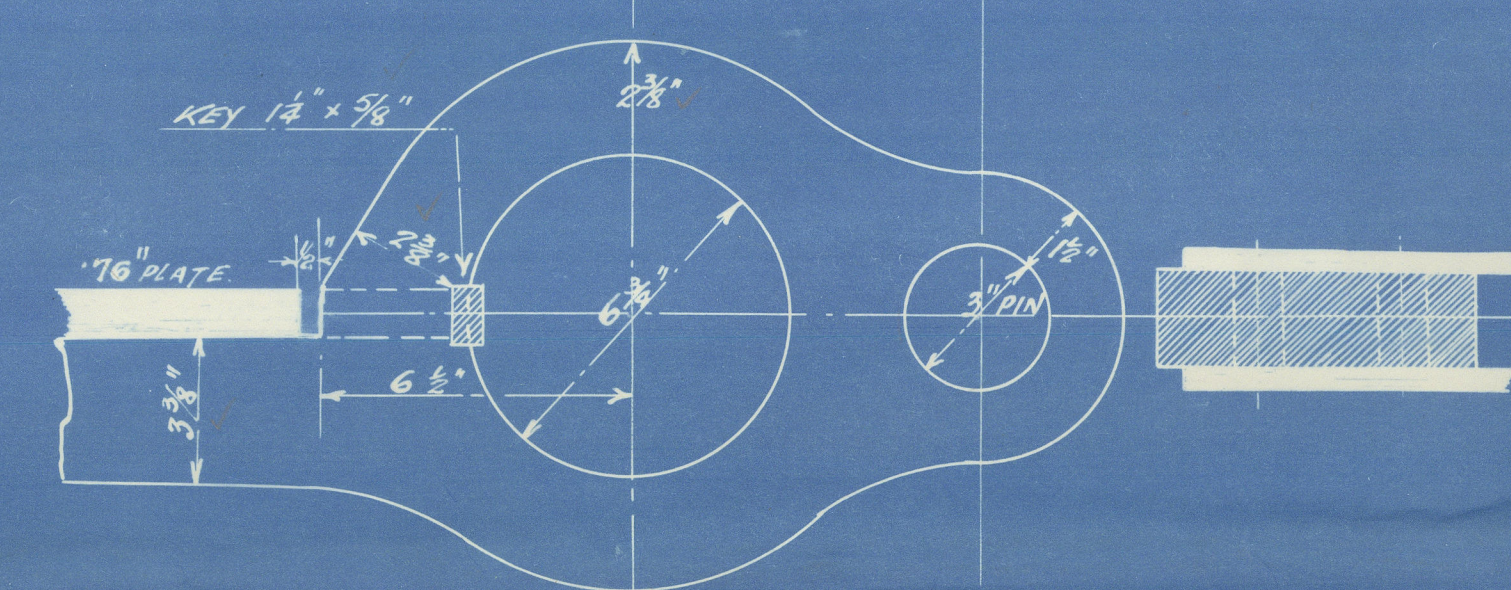
SPEED OF SHIP _____ 8 KNOTS
AREA OF RUDDER TO FORWARD EDGE OF MAINPIECE 43.50 SQ FT
C.G. ABAFT CR LINE OF PINTLES 3'-6" FEET
DIA^R OF RUDDER HEAD A X D = 17 X 5 6 1/8" DIA^R

STERNPOST :- $6\frac{1}{2}'' \times 2''$ SCRAP STEEL OR IRON } A MIXTURE NOT
RUDDER POST & ARMS " " " " } TO BE USED

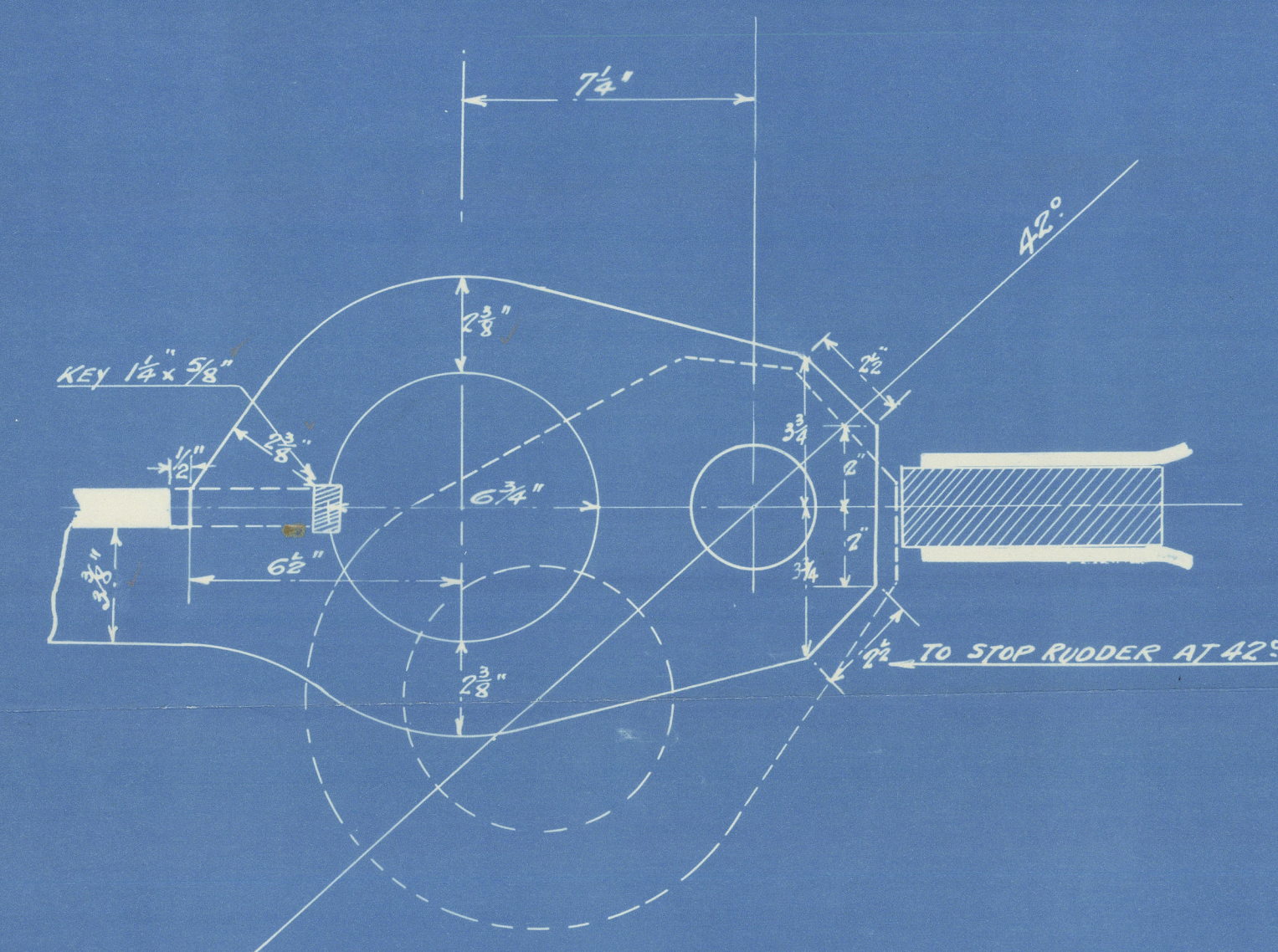
RIVETING

RIVETS IN RUDDER $\frac{1}{8}$ " DIAS SPACED $4\frac{1}{2}$ DIAS APART
RIVETS IN STERNPOST 1" DIAS SPACED 5 DIAS APART.

— UPPER GUDGEON AND PINTLE —
— 3" = 1 FOOT —



— PLAN OF ARM —
— 3" = 1 FOOT —



— STOPPER ON TOP GUDGEON. —

Wm. SIMONS & Co.

STERNPOST & RUDDER.

No. 674

"LORD WILLINGDON."

Wm. Simons & Co.

Sternpost & Rudder - No. 674

GLASGOW REPORT No. 45540



© 2021

Lloyd's Register
Foundation

011047-011056-0226