

Office

M.V. "LYRIA"

PROPOSED ORE CARRIER

MIDSHIP SECTION

SCALE: 1/2" = ONE FOOT

PRINCIPAL DIMENSIONS

LENGTH P.P. 425'-0"
BREADTH MLD 54'-3"
DEPTH MLD 31'-0"



Class 100 A1 Longitudinal framing at bottom & at deck

Scallings as shown and amended are suitable for the existing structure draught of 25'-8 1/2" (fore and aft gangway to be fitted)

LLOYD'S NUMERALS

D. 31
L x D 425 x 31 13175
L x (B + D) 425 x (54.25 + 3) 36231
L/D 425/31 13.7

EQUIPMENT NUMBER

L x (B + D) 36231
POOP 90.625 x 8.0 x 7.5 544
BRIDGE 40.680 x 7.5 } x 7.5 597
FORECASTLE 65.41 x 7.5 }
POOP DECKHOUSE 56.0 x 8.0 x 5.0 224
BRIDGE DECKHOUSE 34.5 x 8.0 } x 5.0 436
CASINGS ETC, 74.5 x 8.0 }
CONT. TRUNK 239 x 4.0 x .50 38032
TRUNK 478

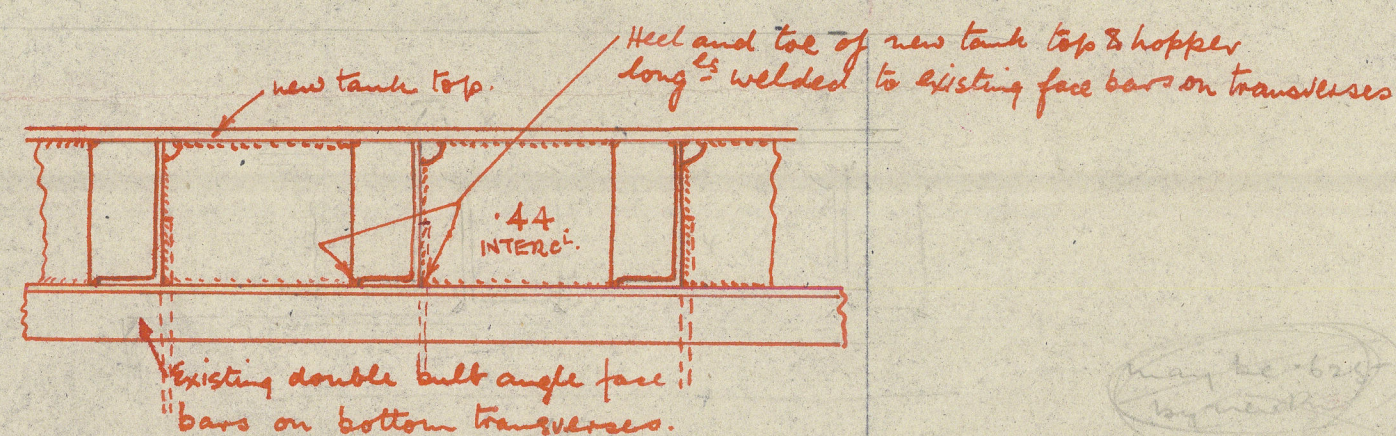
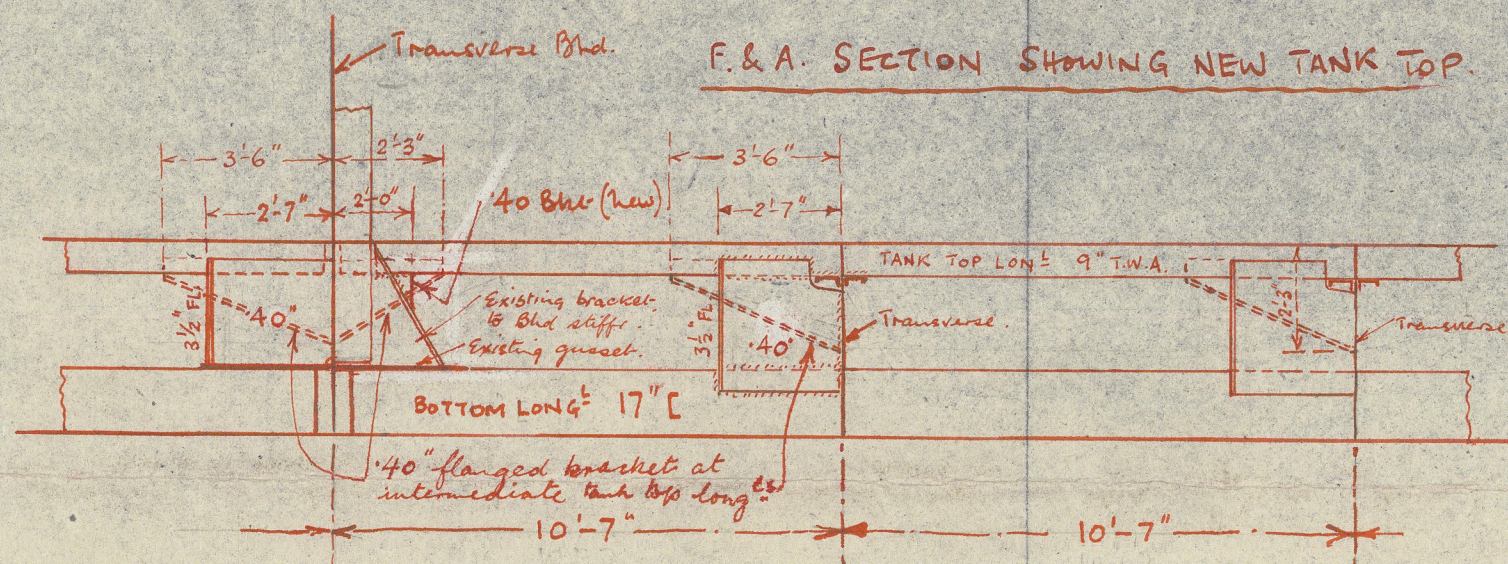
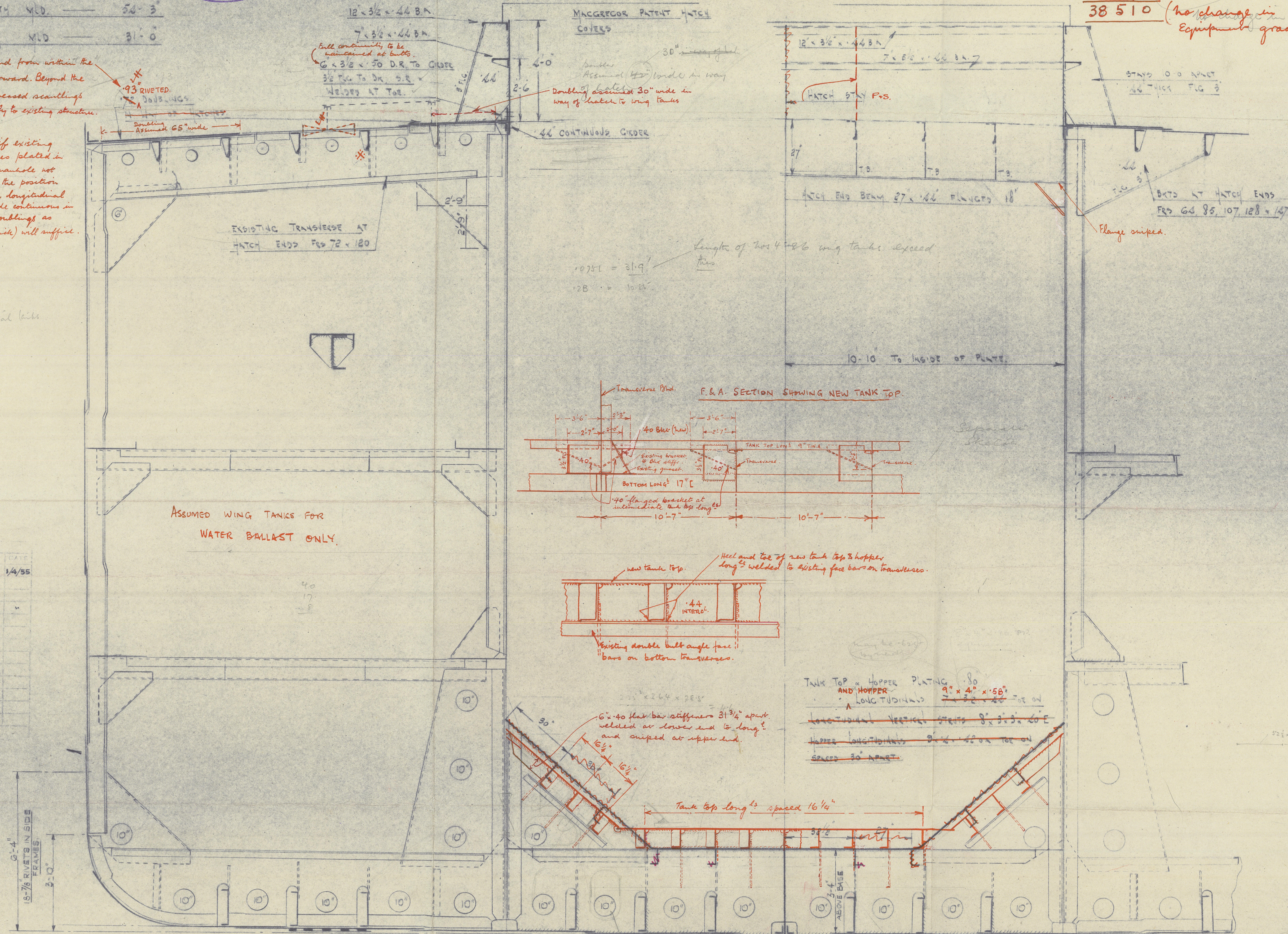
38510

(no change in grade equipment grade)

Doublings to extend from within the poop to the 1/2 L forward. Beyond the 1/2 L forward increased scallings to taper gradually to existing structure.

Alternatively, if existing wing tank hatches plated in and replaced by manhole not wider than 24" in the position indicated and the longitudinal marked * is made continuous in way then deck doublings as proposed (i.e. 72" thick) will suffice.

2 W.B. in external tanks



TANK TOP & HOPPER PLATING
AND HOPPER
LONG TUDINALS
LONG TUDINALS 9" x 4" x 50"
LONG TUDINALS 8" x 3" x 20"
HOPPER LONG TUDINALS 8" x 3" x 20"
SPACED 30" APART

See D526 re access in double bottom. Too shallow - is reduction provided by new plates. Check guide for brackets

9619
4.5.55

Midship section

"Hyria" n/n. "Yebala"

Rpt no. Fal. to S 12488



© 2021

Lloyd's Register
Foundation

011047-011056-0002