

FLYING SHIP  
SHIPS NOS. 372/3 & 376.  
STERN & RUDDER FRAMES.

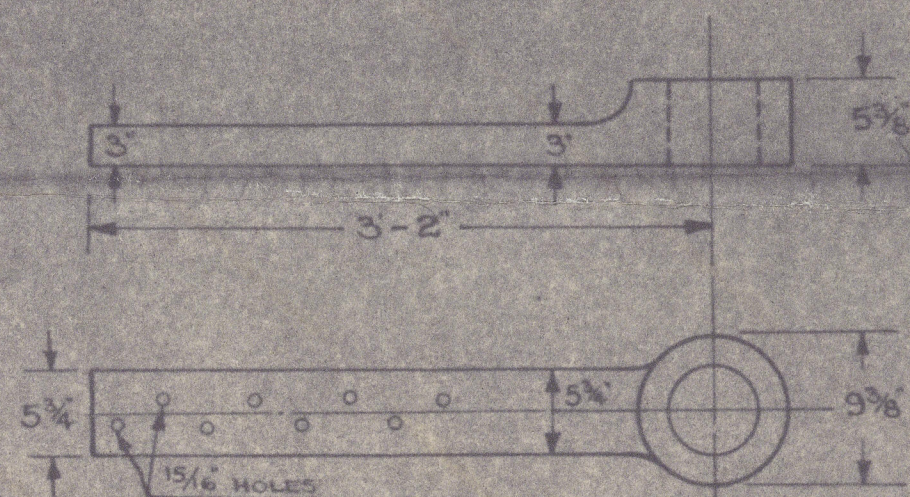
SCALE - 1" = 1 FOOT.

CLASS B5\* FOR TOWING PURPOSES.

TRIAL SPEED 12 KNOTS.

TOWING SPEED 9-11 KNOTS.

PLAN No. 357



RUDDER QUADRANT ARM

CHAINS 1 3/16  
RODS 1 5/16

HOLES IN RUDDER FRAME  
TO BE BORED 1 3/16 FOR 3/4 RIVETS  
SPACED 4 1/2 DIAM. APART

ORDS. SPACED 2.75' APART					
N <sup>o</sup> OF ORD.	ORD.	SM	f(ORD)	(ORD) <sup>2</sup>	SM f(ORD) <sup>2</sup>
1	1.27	1/2	6.35	1.61	1/2 .805
1 1/2	2.10	2	6.20	9.61	2 19.22
2	3.66	1 1/2	5.29	13.39	1 1/2 20.07
3	3.69	4	14.76	13.61	4 54.44
4	3.625	1 1/2	5.438	13.14	1 1/2 19.71
4 1/2	3.125	2	6.25	9.73	2 19.46
5	1.88	1/2	1.32	.77	1/2 .385
		39.893		134.1	

AREA  $\frac{39.893 \times 2.75}{3} = 36.57 \frac{1}{2}$  R =  $\frac{134.1 \times 1}{2} = 67.05$

$S = .26 \sqrt{1.68 \times 36.57 \times 11^2}$

$S = 26 \sqrt{7434}$

$S = .26 \times 19.25$

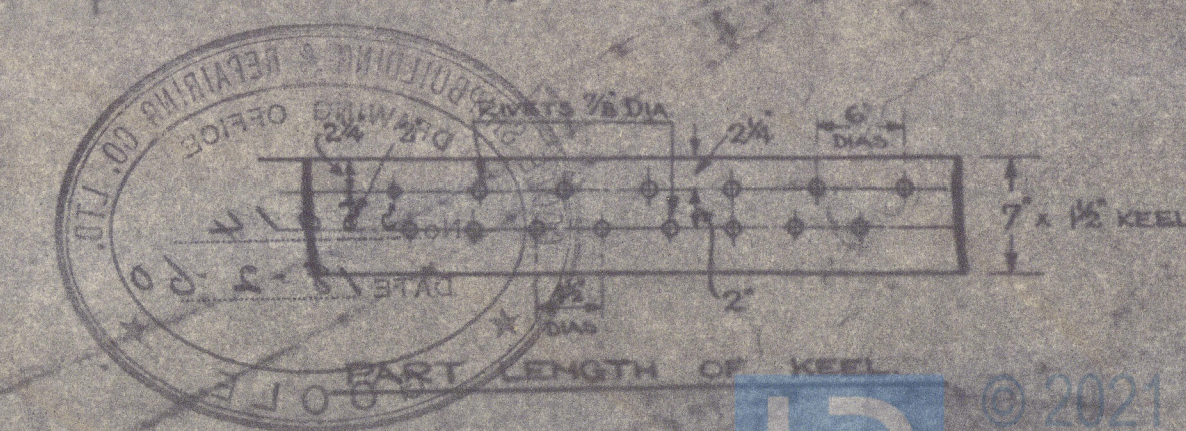
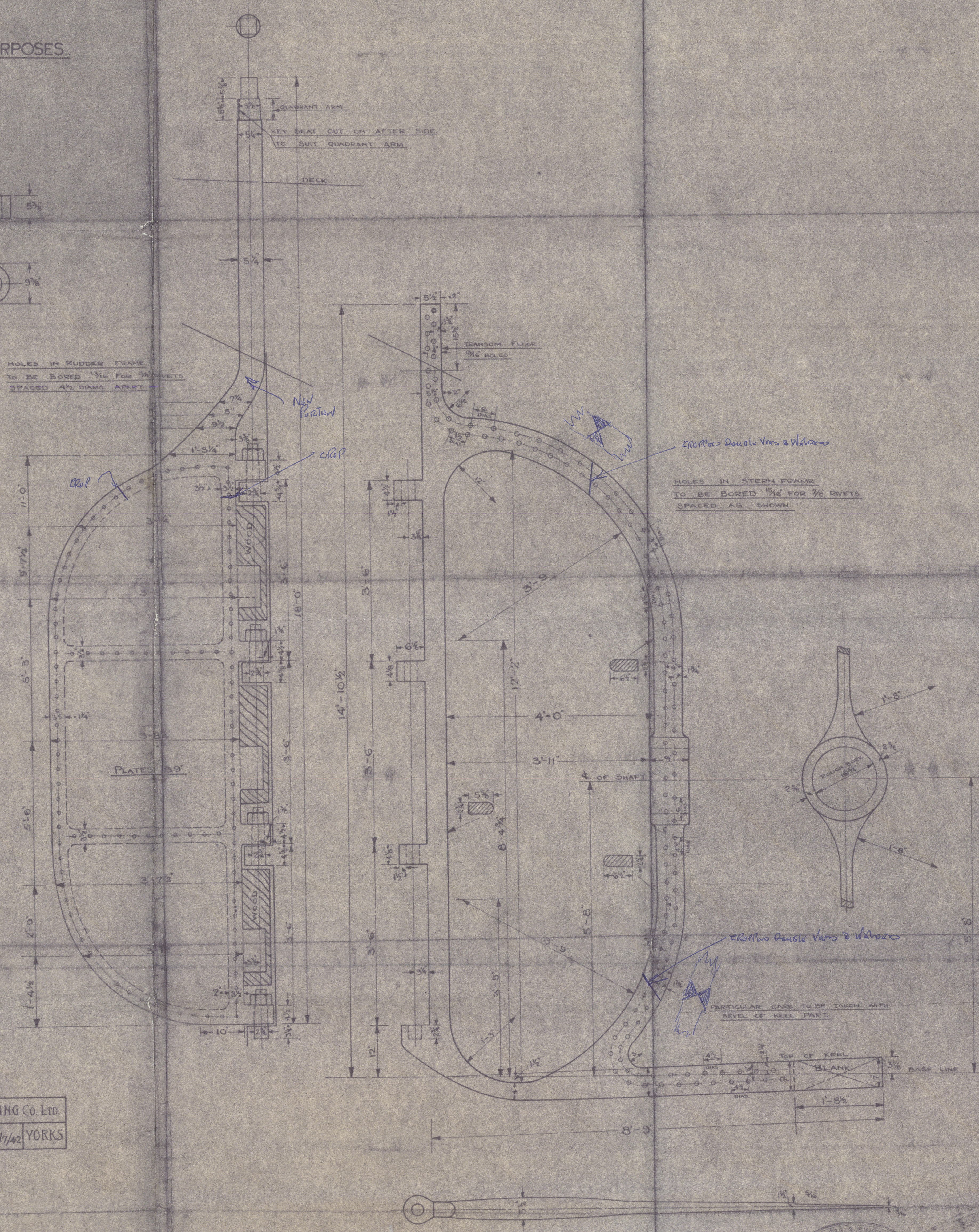
DIA OF STOCK = 5.075 SAY 5 1/4



GOOLE SHIPBUILDING & REPAIRING Co. LTD.

GOOLE Drawn by C. J. Checked by Date: 21/7/42 YORKS

PLANS SUPPLIED TO

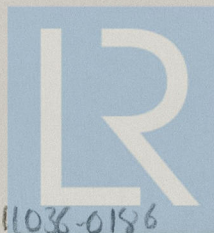




Flying Spitfire

Stern & Ruddle Frames.

gls. 91194.



© 2021

Lloyd's Register  
Foundation

011032-011036-0186