

15 JUL 1960

Index No.
(For London Office only.)

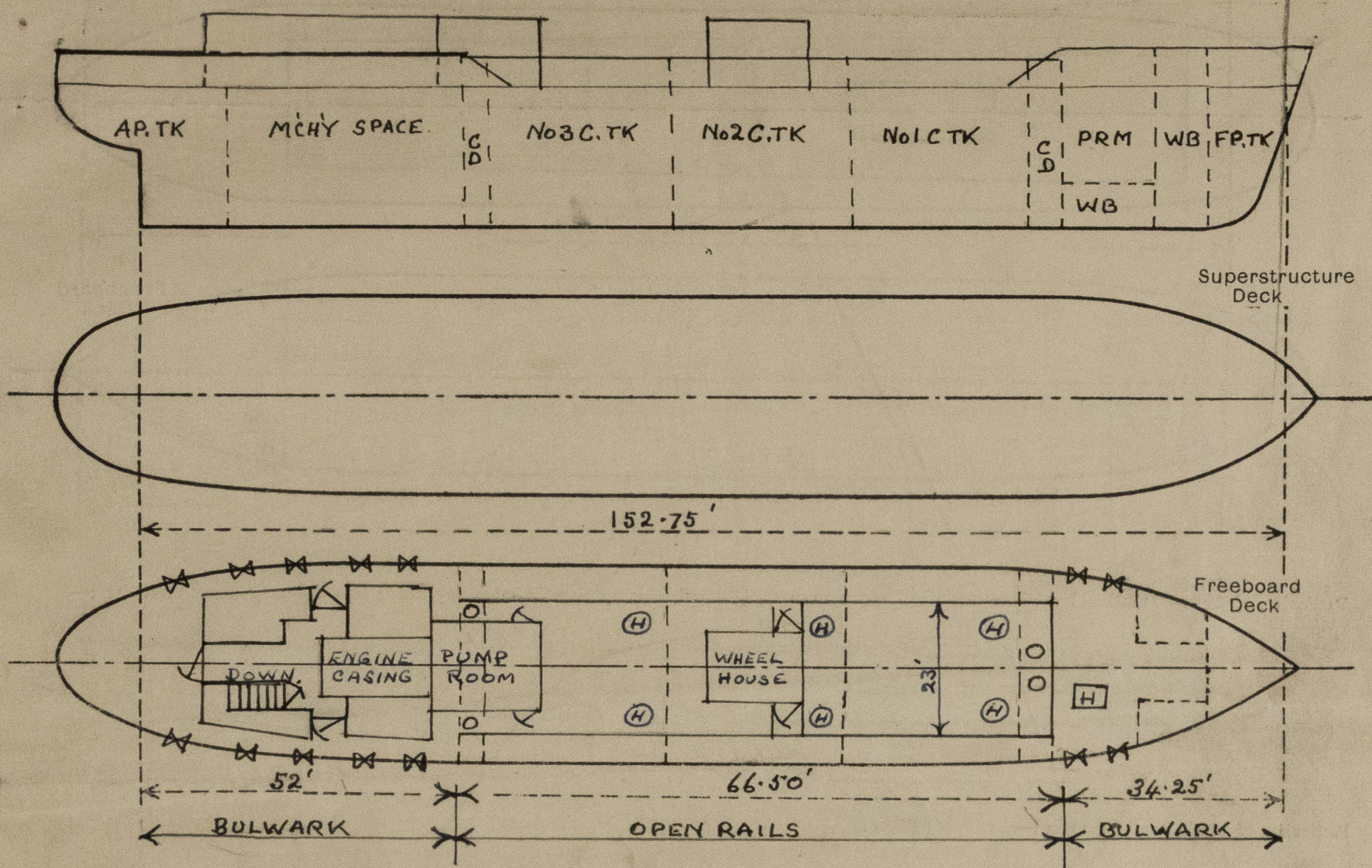
Lloyd's Register of Shipping.

SURVEYS FOR FREEBOARD.

(CONDITIONS OF ASSIGNMENT.)

Ship's Name "CHARMO" Port of Survey LONDON.
 Official Number not yet known Surveyor's Signature A. G. Kirby.
 Nationality and Port of Registry BRITISH. LONDON. Date of Survey WHILST BUILDING.

Disposition and dimensions of superstructures, trunks, deckhouses and machinery casings to be inserted in the diagrams and tabular statement:—



Particulars of Superstructures, Trunks, Casings, Deckhouses.

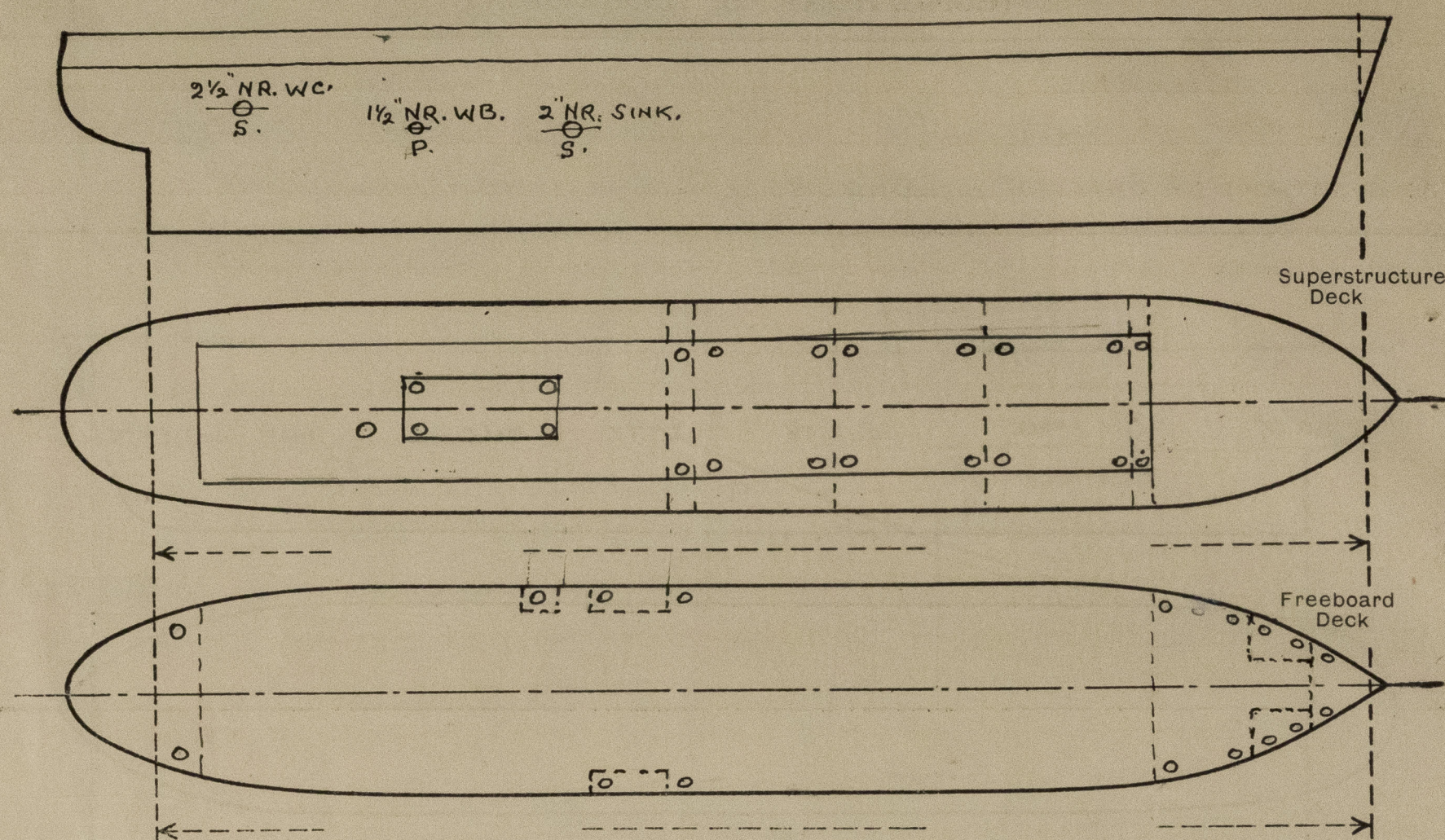
	Coaming	Plating	Stiffeners	Spacing	End Attachments of Stiffeners	Size of Openings	Height of Sills	Height of Casings
Poop Bulkhead ...	NONE							
Raised Quarter Deck Bulkhead ...	NONE							
Bridge, After Bulkhead ...	NONE							
Bridge, Forward Bulkhead ...	NONE							
Forecastle Bulkhead ...	NONE							
Trunk, at ... TOP ...		3/8 CHE' QDS	5" X 3" X 38" A	21"	BRACKETS	SEE HATCHES	-	-
Trunk, Forward SIDES ...		3/8	FULL DEPTH 3/8 FL BRKTS.	21"	-	NONE	-	2' 8"
Exposed Machinery Casings on Freeboard or Raised Quarter Decks ...	NONE							
Exposed Machinery Casings on Superstructure Decks ...	NONE							
Machinery Casings within Superstructures not fitted with Class I Closing Appliances ...	NONE							
Deckhouses on Flush Deck Ships ...	-	.25"	2 1/2 X 2 1/2 X 25 L.D	21"	BRACKETS. T. SHIPED. B.	6'0" X 2'6" (IP 15) 5'9" X 2'6" AFT.	15" 9"	7' 3"

Particulars of Closing Appliances (state if capable of being manipulated from both sides).

Poop Bulkhead ...	NONE
Raised Quarter Deck Bulkhead ...	NONE
Bridge, After Bulkhead ...	NONE
Bridge, Forward Bulkhead ...	NONE
Forecastle Bulkhead ...	NONE
Exposed Machinery Casings on Freeboard or Raised Quarter Decks ...	NONE
Exposed Machinery Casings on Superstructure Decks ...	NONE
Machinery Casings within Superstructures not fitted with Class I Closing Appliances ...	NONE
Deckhouses on Flush Deck Ships ...	HINGED WOOD DOORS (P & S + AFT) CAPABLE OF BEING MANIPULATED FROM BOTH SIDES

PARTICULARS OF PROTECTION TO OPENINGS, ETC.

The following diagrams should be used to indicate the positions of cargo and coaling hatchways, gangway, cargo and coaling ports, ventilators, companionways, etc., which would affect the seaworthiness of the ship :-



Particulars of fiddle, funnel and ventilator coamings, engine room skylight and other openings in machinery casing tops and their means of closing :-

Fiddle, funnel, vent coamings and ER skylights strongly constructed of steel. Skylight fitted with hinged steel flaps with strong bullseye lights.

Particulars of Flush Bunker Scuttles :- *NONE*

Particulars of Companionways :-

Companionway to Engine Room enclosed in strong steel deckhouse for particulars of which see Page 1. height of rail ?

Particulars of Ventilators in exposed positions on freeboard and superstructure decks :-

Ventilators with swivel coxles. 5 on machinery casing. Coaming height 6" dia 12" t 1/4" all fitted with wood plugs, canvas covers and lashing cord. Ventilators on cargo tanks 4 on each tank. Total 12. mushroom type. Height to opening 1' 6" dia 4" all fitted with wire gauge protectors and screw down covers. Ventilators to forward cofferdam (on trunk) 2 ventilators. height to opening 1' 6" diameter 3" t 1/4" fitted with screwed covers. Ventilators to after cofferdam (on trunk) 2 ventilators height to opening 1' 6" dia 3" t 1/4" fitted with screwed covers.

Particulars of Air Pipes in exposed positions on freeboard, raised quarter, or superstructure decks :- *Freeboard deck only.*

No of air pipes.
 4. Forward ballast tanks } height to opening 3' 0" dia 3 1/2" t 1/4"
 2 Fore peak tank }
 4 Forward deep tank } All fitted with screwed brass caps.
 2 After cofferdam }
 2 Bunker oil tanks height to opening 3' 0" dia 3 1/2" t 1/4" fitted with gauge & screwed cap.
 1 Port F.W. Tank }
 2 After peak tank } height to opening 3' 0" dia 3 1/2" t 1/4"
 All fitted with screwed brass caps.

Particulars of Gangway Cargo and Coaling Ports :-

NONE.

Particulars of Scuppers and Sanitary Discharge Pipes :-

2 1/2" dia WC discharge (SS), 1 1/2" dia WB discharge (PS) and 2" dia sink discharge (SS).

All from deckhouse aft, led overboard below freeboard deck and each fitted with GM stormvalve at shipside.

Particulars of Side Scuttles :-

10" dia opening GM scuttleports fitted in after Deck house and Pump Room. (11 P & 11 S).

No sidescuttles fitted below freeboard deck.

Vertical distance of Sill of lowest Side Scuttle above top of keel :-

Particulars of Guard Rails :-

3 tier guard rails 3/4" dia bar. Stanchions 3" x 3/8" flat bar spaced 6' 0" Bulwarks, 3' 0" height 1/4" t stanchions 5" x 3" x 3/8" spaced 6' 0" Bulwark rail 6" x 3" x 1/2" bulb angle.

Particulars of Gangways, Lifelines, etc. :-

Particulars of Freeing Arrangements.

	Length of Bulwark	Height of Bulwark	Size of Freeing Ports	Number each side	Area each side	Rule area each side
After Well ...	52'	3' 0"	2' x 1'	5	10 sq ft	-
Forward Well ...	34.25'	3' 0"	2 x 1'	2	4 sq ft	-

State position of each freeing port ... { After Well :-
 (F. and A. position and height above deck edge) { Forward Well :-

State whether the freeing ports are fitted with shutters, bars, or rails, and give particulars of such :-

Additional area where sheer is less than standard.

Hinged shutters.

PARTICULARS OF PROTECTION TO OPENINGS, ETC.

0

HATCHWAYS ON FREEBOARD AND SUPERSTRUCTURE DECKS.									
ON TRUNK TOP									
CARGO COFFEROAM FORD PUMP TANK (6) ACCESS ROOM ACCESS.									
Description of Hatchway	
Dimensions of Hatchway	
COAMINGS	Height above Deck	...	33 1/2"		3' 0"				
	Thickness { Sides36"		5/16"				
	Thickness { Ends	...	-		-				
	Stiffeners	...	-		-				
	Brackets, Stays	...	-		-				
HATCH BEAMS	Number	...							
	Spacing	...							
	Scantling and Sketch	...							
	Bearing Surface	...	NIL	NIL	NIL				
FORE AND AFTERS	Number	...							
	Spacing	...							
	Unsupported Lengths	...							
	Scantling* and Sketch	...	NIL	NIL	NIL				
HATCH COVERS	Material	...	STEEL	STEEL	STEEL				
	Thickness50"	.375"	.25"				
	How fitted	...	HINGED	BOLTED	HINGED				
	Bearing Surface	...	O.T.	W.T.	W.T.				
Spacing of Cleats		...	6-1" DIA	3" CC	6-1" DIA				
Number of Tarpaulins		...	SCREW TOGGLES	-	SCREW TOGGLES				
<p>*Are wood fore and afters steel shod at all bearing surfaces? <input checked="" type="checkbox"/></p> <p>Are battens and wedges efficient and in good condition? <input checked="" type="checkbox"/></p> <p>Are tarpaulins in good condition and in accordance with rule requirements? <input checked="" type="checkbox"/></p> <p>Are lashings provided in accordance with rule requirements? <input checked="" type="checkbox"/></p>									

Particulars of any special features :—



© 2021

Lloyd's Register Foundation