

# Lloyd's Register of Shipping.

## SURVEYS FOR FREEBOARD.

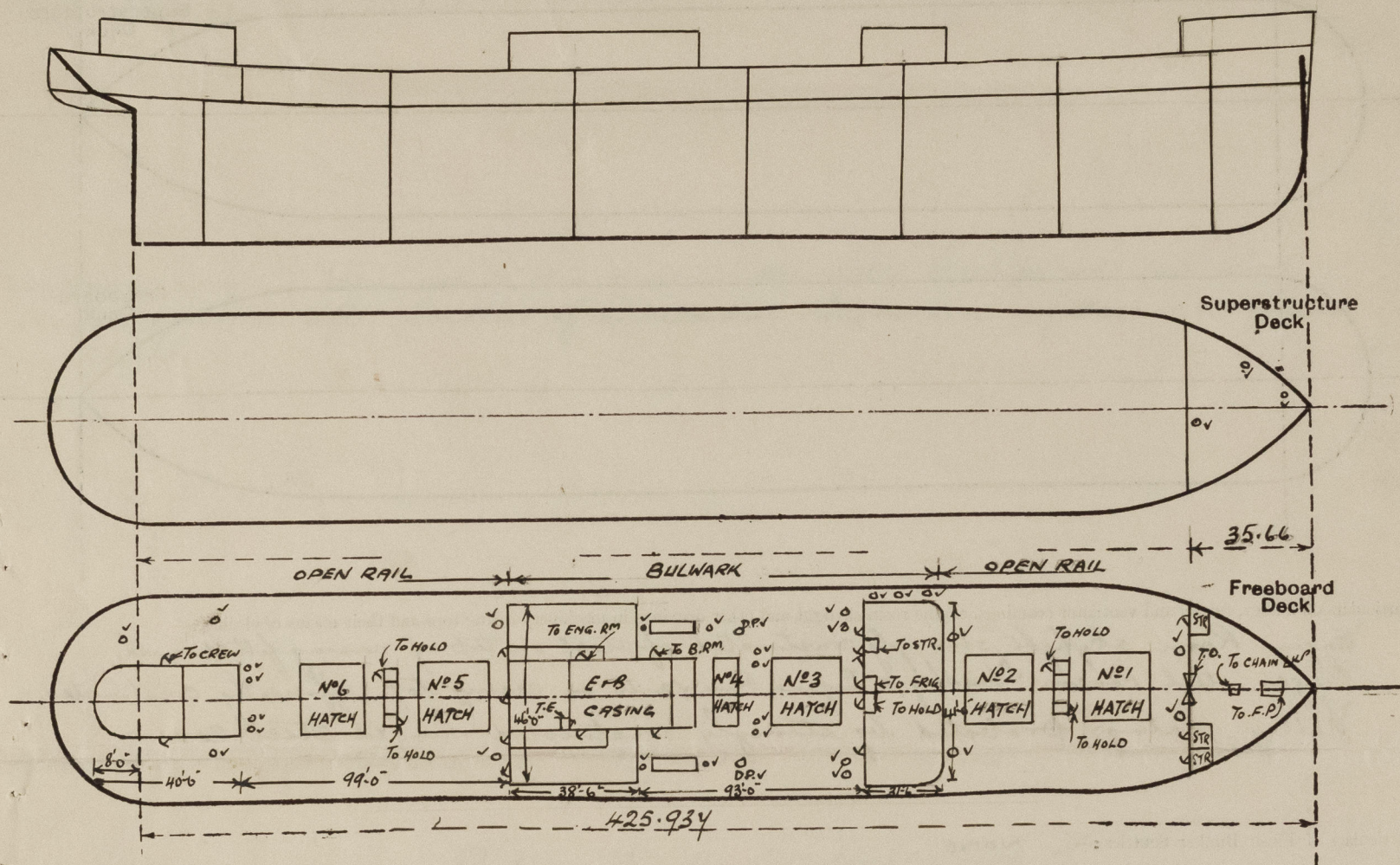
(CONDITIONS OF ASSIGNMENT.)

19 OCT 1948

DUN. RPT. NO 9494.

Ship's Name EMPIRE FAVOUR PENelope Port of Survey DUNDEE  
 Official Number 166221 Surveyor's Signature Am Queen  
 Nationality and Port of Registry British, Dundee GREEK Date of Survey During Construction

Disposition and dimensions of superstructures, trunks, deckhouses and machinery casings to be inserted in the diagrams and tabular statement: -



Particulars of Superstructures, Trunks, Casings, Deckhouses.

	Coaming	Plating	Stiffeners	Spacing	End Attachments of Stiffeners	Size of Openings	Height of Sills	Height of Casings
Poop Bulkhead ... ..								
Raised Quarter Deck Bulkhead ...								
Bridge, After Bulkhead ... ..								
Bridge, Forward Bulkhead ... ..								
Forecastle Bulkhead ... ..	30	30	4' 3" x 5/16"	30"	NONE	5'-0" x 4'-0" 5'-0" x 2'-3"	12"	6'-9"
Trunk, Aft ... ..								
Trunk, Forward ... ..								
Exposed Machinery Casings on Freeboard or Raised Quarter Decks ...	35	30	3 1/2" x 3" x 40	31	NONE	5'-0" x 2'-3" FIDDY 5'-0" x 2'-3" ERM	22" 18"	7'-9"
Exposed Machinery Casings on Superstructure Decks ... ..								
Machinery Casings within Superstructures not fitted with Class I Closing Appliances ... ..								
ENGINEERS HOUSE 34' FWD & 28' SIDE 30' FWD & 25' SIDE 3' x 3' x 30" REV. BAR 2'-7" x 3'-3" 2'-9" to 3'-3"					BKTS TOP & BOT 7' 0" 8' 0"	4'-6" x 2'-0" 5'-0" x 4'-0", 4'-6" x 2'-0"	18" 22" & 18"	7'-6" 7'-6"
Deckhouses on Flush Deck Ships SALOON 34' " 25' " 30' " " 25' "	30	25	3' x 2 1/2" x 30	2'-0" to 3'-0"	NONE	5'-0" x 2'-0"	22" & 18"	8'-0"
AFTER HOUSE								

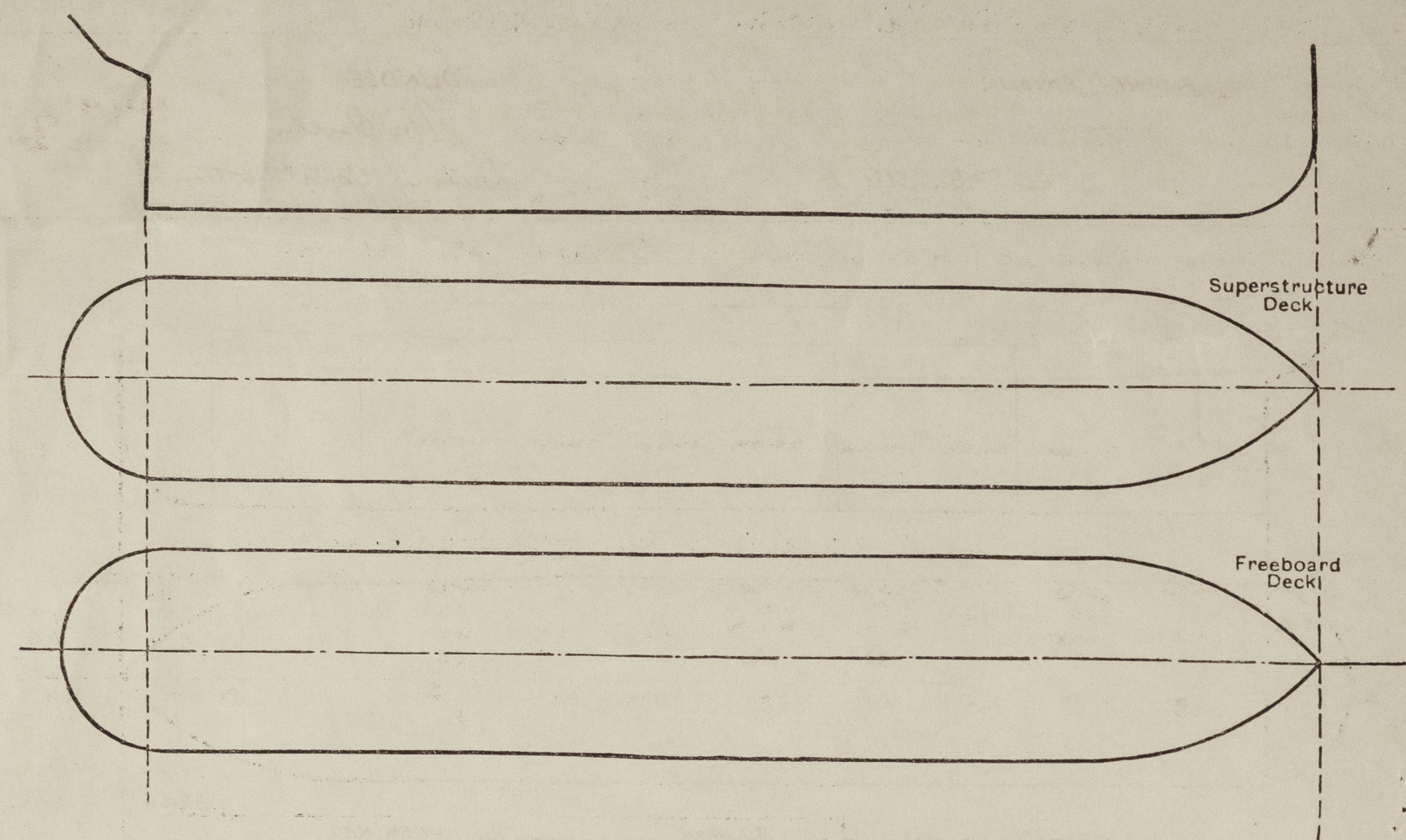
Particulars of Closing Appliances (state if capable of being manipulated from both sides).

Poop Bulkhead ... ..	
Raised Quarter Deck Bulkhead ...	
Bridge, After Bulkhead ... ..	
Bridge, Forward Bulkhead ... ..	
Forecastle Bulkhead ... ..	Steel plate secured by hook bolts, 12" apart & hinged steel doors to stores ✓
Exposed Machinery Casings on Freeboard or Raised Quarter Decks ...	Steel door to Boiler Rm & wooden doors to Eng. Rm. operated both sides ✓
Exposed Machinery Casings on Superstructure Decks ... ..	
Machinery Casings within Superstructures not fitted with Class I Closing Appliances ... ..	
Deckhouses on Flush Deck Ships ...	Steel W.T. doors to Saloon & midship accommodation. Wood doors to crew aft. ✓



# PARTICULARS OF PROTECTION TO OPENINGS, ETC.

The following diagrams should be used to indicate the positions of cargo and coaling hatchways, gangway, cargo and coaling ports, ventilators, companionways, etc., which would affect the seaworthiness of the ship:—



Particulars of fiddle, funnel and ventilator coamings, engine room skylight and other openings in machinery casing tops and their means of closing:—

Engine Room skylight strongly constructed of steel on top of casing fitted with hinged steel covers. Fiddle & Engine Rm. vents on casing top efficiently constructed. Fiddle gratings protected by strongly constructed hinged steel covers.

Particulars of Flush Bunker Scuttles:—

NONE ✓

Particulars of Companionways:— Entrance to holds through doorway in steel casings strongly constructed on freeboard deck, with W.T. doors 3'-6" x 1'-6" sill 2'-0" manipulated both sides by turnbuckles. Entrance to ship's store Rm. amidships is thro doorway in steel casing strongly constructed, double steel doors 5'-0" x 4'-0" sill 22" manipulated both sides. Entrance to crew quarters aft is through doorway in steel casing strongly constructed, wood door 5'-0" x 2'-0" sill 24" operated both sides.

Particulars of Ventilators in exposed positions on freeboard and superstructure decks:—

VENTILATOR	COAMING	3'-0" x .35" THK	ON F'SCLE DK
1-10 1/2 DIA. VENT TO F.P. STORES	3'-0" x .35" THK	ON F'SCLE DK	
2-8 " " " "	3'-0" x .34" "	" " "	
6-18 " " " " HOLD & TWEENDEK	3'-0" x .40" "	UPPER DK	✓
2-9 " " " " " "	3'-0" x .35" "	" " "	
13-12 " " " " " "	3'-0" x .34" "	" " "	
6-14 1/2 " " " " " "	3'-0" x .36" "	" " "	
1-10 " " " " STEERING GEAR	3'-0" x .32" "	" " "	

2- DERRICK POST VENTS TO HOLD & TWEEN DK .50" THK. SUITABLY STAYED ✓

There are a number of G.N. vents on 1/2" cle scupper & aft. 3'-0" to opening ✓

all vents closed with wood plugs & canvas covers & constructed in accordance with the rules. ✓

Particulars of Air Pipes in exposed positions on freeboard, raised quarter, or superstructure decks:—

PIPE	NO	1 D.B. TANK	UPPER	2-9"
1-14" DIA. AIR PIPE TO FORE PEAK TANK ON F'SCLE DECK, 1'-6" HIGH	(P)	Nº 1 D.B. TANK		
1-2 1/2 " " " " " "	(P.S)	" " "		
1-4 " " " " " "	Nº 2	" " "		
1-3 " " " " " "	Nº 2	" " "		
1-4 " " " " " "	Nº 3	" " "		
1-3 " " " " " "	Nº 4	" " "		
1-3 1/2 " " " " " "	Nº 4A	" " "		
1-3 " " " " " "	Nº 5	" " "		
1-4 " " " " " "	Nº 6	" " "		
1-3 " " " " " "	Nº 6	" " "		
1-4 " " " " " "	P	FT PEAK		
2-4 " " " " " "	P.S	TO DEEP TANKS		
2-2 " " " " " "	"	"		
1-5 " " " " " "	"	"		

3/8" SNIPTEE HOLE  
all air pipes fitted with wood plugs & canvas cover ✓

Penelope. Empire Flavour

Particulars of Gangway Cargo and Coaling Ports:—

NONE ✓

Particulars of Scuppers and Sanitary Discharge Pipes:—

Sanitary discharges from accommodation amidships discharge overboard below the freeboard deck and are fitted with storm valves at ships side. Sanitary discharges & scuppers from accommodation in after end discharge overboard below the freeboard deck and are fitted with storm valves at ships side. Scupper from freeboard deck in fore fitted with storm valve at ships side & screw plug at inner end. Tween & scupper led to bilges. Ash shoot starboard side fitted with flap at inner end ✓

Particulars of Side Scuttles:—

There are 10" dia side scuttles fitted to ships side in crew accommodation aft. Scuttles of substantial construction & fitted with hinged deadlights ✓

Vertical distance of Sill of lowest Side Scuttle above top of keel

34'-8" ✓

Particulars of Guard Rails:—

Guard Rails on 1/2" cle 3'-3" high, 2 rods ✓  
Guard Rails on upper deck clear of accommodation 3'-9" high, 3 rods ✓  
Bulwark in way of accommodation 3'-6" high suitably stayed ✓

Particulars of Gangways, Lifelines, etc:—

Provision has been made for fitting lifeline fore & aft. ✓

## Particulars of Freeing Arrangements.

	Length of Bulwark	Height of Bulwark	Size of Freeing Ports	Number each side	Area each side	Rule area each side
After Well ...						
Forward Well ...						

State position of each freeing port ... After Well:—

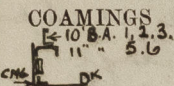

(F. and A. position and height above deck edge) Forward Well:—

State whether the freeing ports are fitted with shutters, bars, or rails, and give particulars of such:—

Additional area where sheer is less than standard.



### PARTICULARS OF PROTECTION TO OPENINGS, ETC.

HATCHWAYS ON FREEBOARD AND SUPERSTRUCTURE DECKS												
Description of Hatchway			Nº1	Nº2	Nº3	Nº4	Nº5	Nº6	SMALL COAL HATCHES.	HATCH TO CHAIN LOCKER	HATCH TO PEAK STORE	COAL HATCH ON CASING TOP
Dimensions of Hatchway			31'-6" x 20'-0"	31'-0" x 20'-0"	31'-0" x 20'-0"	12'-4" x 20'-0"	31'-0" x 20'-0"	31'-0" x 20'-0"	15'-6" x 5'-0"	2'-0" x 2'-6"	4'-0" x 3'-0"	5'-2" x 20'-0"
<div>COAMINGS</div> <div></div>	Height above Deck	...	30"		DO ✓		42" ✓	42" ✓	30"	9" B.A. ✓	DO ✓	DO ✓
	Thickness	Sides ... Ends ...	45" ✓ 44"				DO ✓	DO ✓	44" ✓ 44"	COAMING.		
	Stiffeners	...		12" C & 3 x 3 x 44 VERT STIFF AT WEBS.						4 x 3 x 40 B.A.		
	Brackets, Stays	...	3 STAYS ✓	3 ✓	3 ✓	1 ✓	3 ✓	3 ✓	1 ✓			
HATCH BEAMS	Number	...	5	5	5	1	5	5				
	Spacing	...	5'-3"	5'-2"	5'-2"	6'-5 1/2"	5'-2"	5'-2"				
	Scantling and Sketch	...	18 x 4 x 5 LBS ✓ 	18 x 6 x 5 LBS ✓		18 x 4 x 5 LBS ✓	18 x 6 x 5 LBS ✓		NONE ✓	✓	✓	✓
	Bearing Surface	...	4"	4"	4"	4"	4"	4"				
FORE AND AFTERS	Number	...										
	Spacing	...										
	Unsupported Lengths	...	NONE	NONE	NONE	NONE	NONE	NONE	NONE	✓	✓	✓
	Scantling* and Sketch	...										
	Bearing Surface	...										
HATCH COVERS	Material	...	W.W.			W.W.	W.W.		W.W.	W.W.		
	Thickness	...	2 1/2			3"	2 1/2		2 1/2	2 1/2		
	How fitted	...	F & A ✓	DO ✓	DO ✓	F & A ✓	F & A ✓	DO ✓	TRANS.	F & A ✓	DO ✓	DO ✓
	Bearing Surface	...	3 1/2			3 1/2	3 1/2		3"	3"		
Spacing of Cleats			2'-0" ✓	DO ✓	DO ✓	DO ✓	DO ✓	DO ✓	DO ✓	1'-6" ✓	DO ✓	2'-0" ✓
Number of Tarpaulins			3						2			3
<div>*Are wood fore and afters steel shod at all bearing surfaces? ✓</div> <div>Are battens and wedges efficient and in good condition? YES ✓</div> <div>Are tarpaulins in good condition and in accordance with rule requirements? YES ✓</div> <div>Are lashings provided in accordance with rule requirements? YES LOCKING BARS FITTED AT ALL HATCHES. ✓</div>												

Particulars of any special features :—

DISPLACEMENT PARTICULARS.

DRAFT	DISPLACE	T.P.I.
27-4 1/2"	14505	49.34
26-4 1/2"	13906	49.0
25-4 1/2"	13325	48.62

Endorsement at first survey and at surveys for renewal of Certificate :—

The fittings and appliances are in accordance with the particulars shown on this form (or as now modified) and are in good condition.



Lloyd's Register  
Foundation