

4 OILTANKERS OF 2050 TONS
 No. 652 - N.V. WERF GUSTO
 No. 38 - N.V. NED. DOK Mij.
 No. 201-202 - N.V. RYKEE & Co.

GROOTSPANT.

SCHAAL 1:24.

CLASS: 100 A1. [CARRYING PETROLEUM IN BULK]

special notation: Longitudinal framing at bottom and at bulk head.

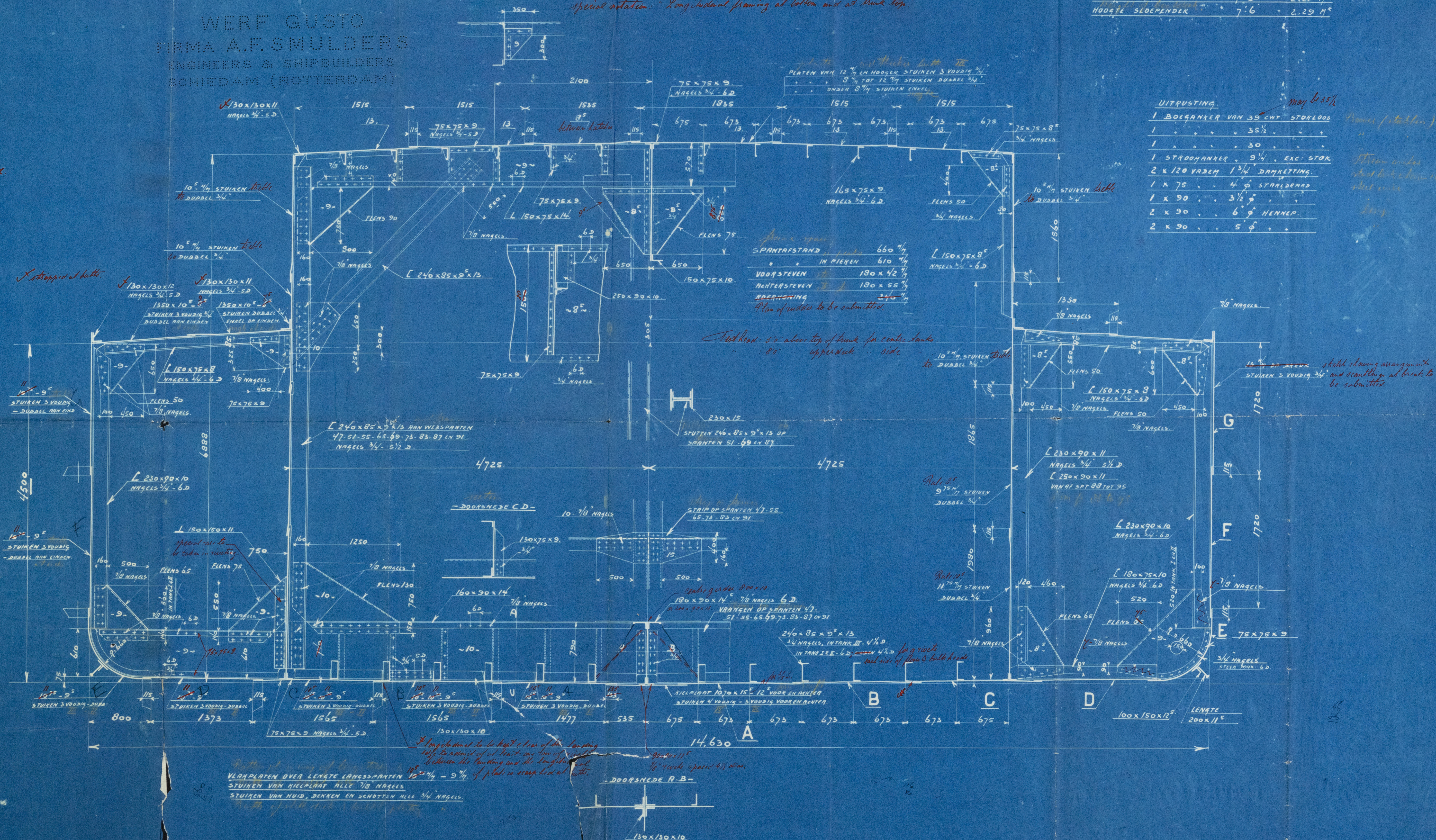
LENGTE P.P.	260'0" = 79.25 M ²
BREEDTE	48'0" = 14.63 M ²
HOLTE	14'9" = 4.50 M ²
HOOGTE TRUNKDEK	7'3" = 2.21 M ²
HOOGTE SLOEPENDEK	7'6" = 2.29 M ²

LLOYD'S NUMMERS.

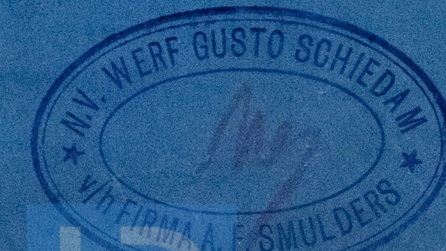
D = 14.75
 L x D = 3835
 L (B+D) = 16315
 L = 11.51 (D = TRUNKTOP)

UITRUSTING NUMMER
 L (B+D) = 16315
 TRUNK = 471
 FORECASTLE = 272
 POOP = 435
 DEKWIJ = 244
 17737 letter c

WERF GUSTO
 FIRMA A.F. SMULDERS
 ENGINEERS & SHIPBUILDERS
 SCHIEDAM (ROTTERDAM)



13/1/30



No 70025.

Weyl Gusto 652
Rykie 201/2
New Det. M. 4 30
Commanded M. F.
London

Middleby Section

GEN. BOX NO 583

188

652 M.V. "Abdegonda" *

Rot 20165 ^{N/W}
" 92057

201 Haliotis
Rot. 20252.

202.

38

1923 184
129
47
260

1923

1911
12
1925



© 2021

Lloyd's Register
Foundation