

NUMERALS

L x D ----- 985
 L x (B + D) ----- 2976
 D ----- 10.5
 B ----- 8.93

EQUIPMENT NUMERAL L x (B + D) = 2976

ANCHOR 1st BOWER 4 1/4 CWTs EX STOCK
 " 2nd " 4 " " "
 CABLE 60 FATHS. 1 1/16" STUD LINK
 HAWSER 60 " 5 1/2"
 WARP 60 " 3 1/2"

"E" OUT
 SHEERSTRAKE 41 x 30

"D" IN.
 30"

"C" OUT
 30" FOR 1/2 L
 26" AT ENDS

RISE OF FLOOR 12"

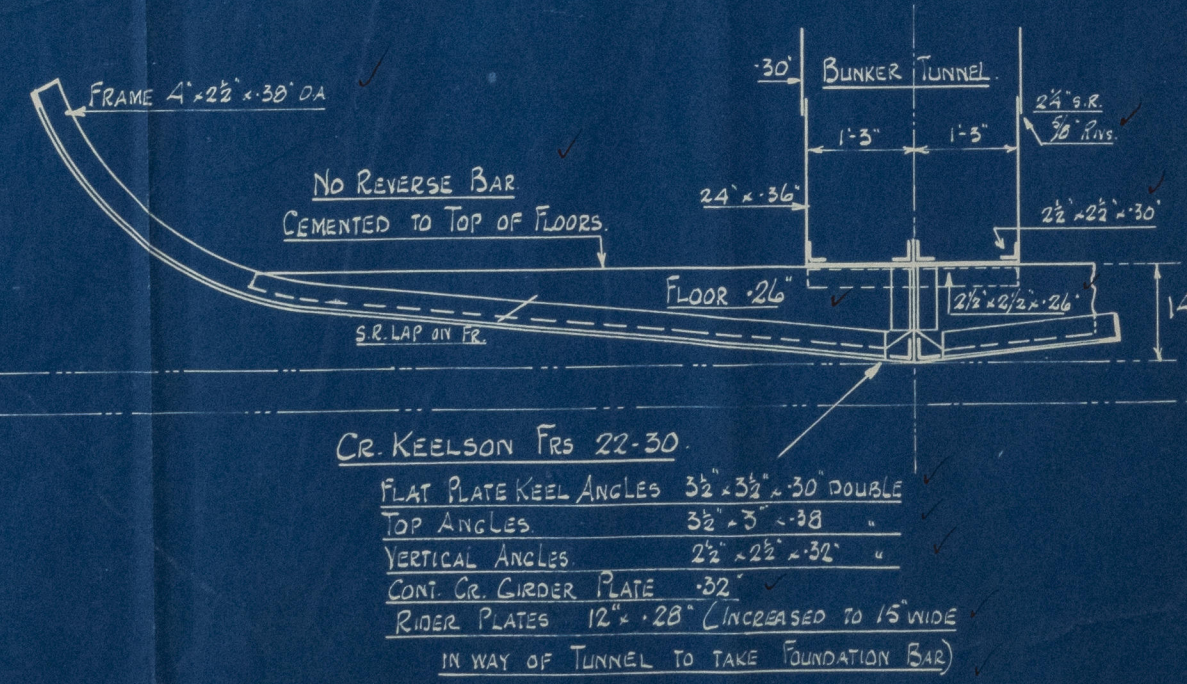
BILGE KEEL - 6 x 3 1/2 x 1/2 BA
 3 1/2" FLG OUT DOWN TO 1"
 FOR WELDING

"B" IN.
 30" FOR 1/2 L
 26" AT ENDS

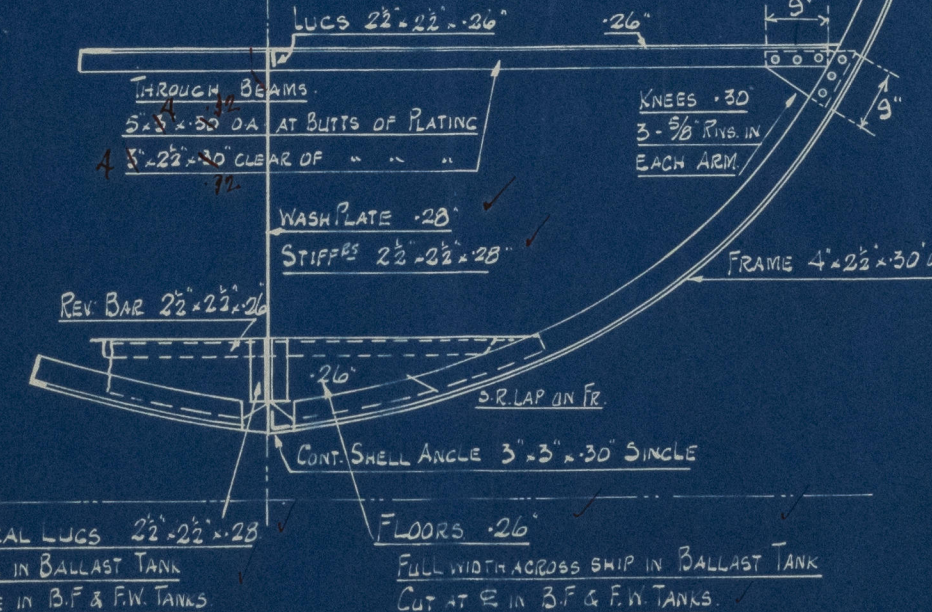
"A" IN & OUT
 30" FOR 1/2 L
 26" AT ENDS

FLAT PLATE KEEL
 30" x 40" FOR 1/2 L
 26" AT ENDS

SECTION THRO' BUNKERS AT FR 24



SECTION THRO' BALLAST TANK AT FR 43



RIVETING

BUTTS OF KEEL TREBLE RIVETED STRAPS FOR 1/2 L
 DOUBLE " " AT ENDS
 SHEERSTRAKE - DOUBLE RIVETED STRAPS
 BILGE STRAKE " " " "
 REMAINDER OF SHELL - D.R. OVERLAPS
 BULWARKS - S.R. STRAPS
 DECK STRINGER PLATES - D.R. OVERLAPS THROUGHOUT
 PLATING D.R. " FOR 1/2 L
 " " " S.R. " AT ENDS
 SEAMS OF KEEL STRAKE - D.R. THROUGHOUT
 " " REST OF SHELL - S.R. " "
 " " DECK PLATING - S.R. " "
 RIVETS THRO' FRAMES & FLAT PLATE KEEL 5/8" DIA
 " " " REST OF SHELL 3/4" " "
 " " " E.R. FLOORS 3/4" " "
 " " " FLOORS ELSEWHERE 3/8" " "
 " " " BOILER STOODS 3/8" " "
 " " FLAT PLATE KEEL SEAMS & BUTTS 3/4" " "
 " " REST OF SHELL SEAMS & BUTTS 3/8" " "

SINGLE SCREW STEAM TUG

LENGTH B.P. ----- 93'-9"
 BREADTH MLD. ----- 21'-3"
 DEPTH MLD. ----- 10'-6"
 TO TOP OF FLAT PLATE KEEL AMIDSHIPS

TO LLOYDS CLASS 100 AI *
 FOR TOWING SERVICES HARBOUR & ESTUARY WORK

RICHARD DUNSTON LTD.
 SHIPBUILDERS
 THORNE YORKSHIRE

DRAWN BY			REVISIONS		
10/1/40			No.	DATE	PARTICULARS
DATE DEC 2/41					
TRACED BY					
DATE					
CHECKED BY					
DATE					

This Drawing and the Information it contains are the Property of RICHARD DUNSTON LTD.
 It is not to be Traced, Copied or Published without their Written Consent, nor is the Information thereon to be misused in any way.

TITLE: MIDSHIP SECTION
 SCALE: 1/2" TO ONE FOOT

YARD No. T 383/6
 DRG. No. 3072

RECORDS DEPT
LONDON

3

modified design
midship section

Dunstan's

Yd. nos. 383/4/5/6.

383/4/5/6

R. Dunstan, Ltd

modified design
midship section

App'd
9/10/41

© 2021

Lloyd's Register
Foundation

010961-010969-0077