

REMAINDER 1" = 1 FOOT.

TOWED SPEED 5 KNOTS

STERNFRAME FORGED STEEL TO LLOYDS REQUIREMENTS

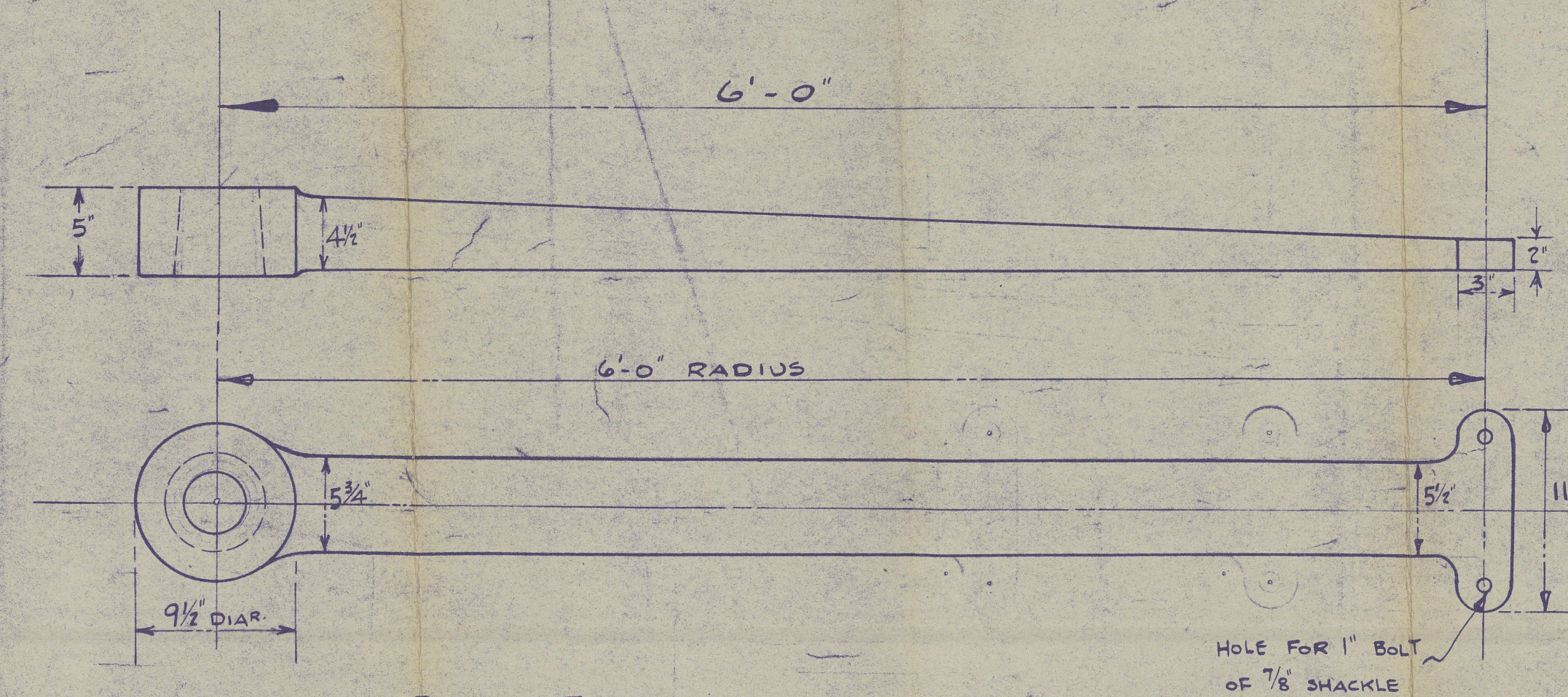
RUDDER STOCK FORGED STEEL WITH ARMS SHRUNK AND KEYED ON

$$\underline{A \times D = 163}$$

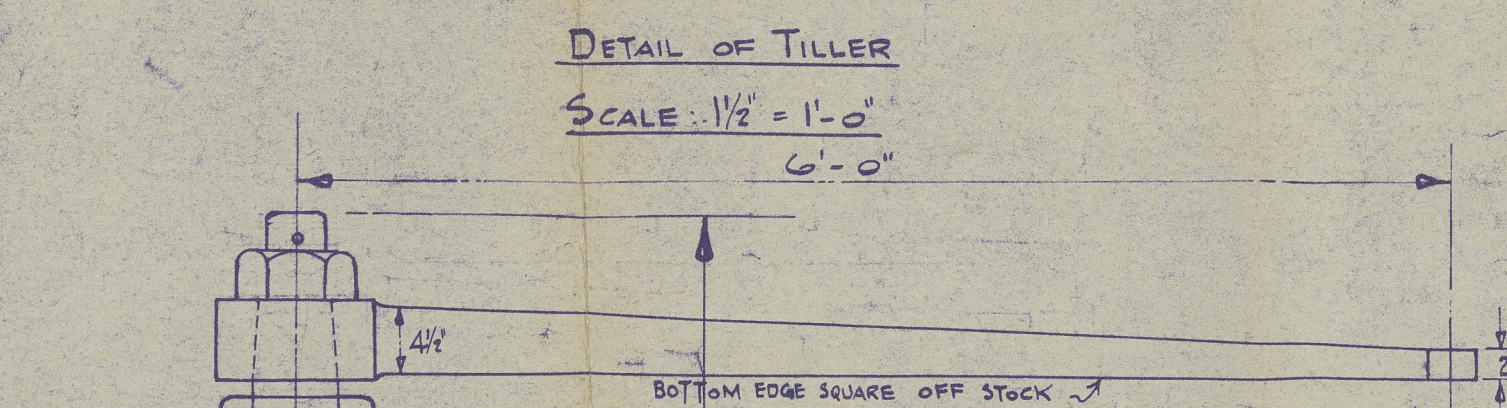
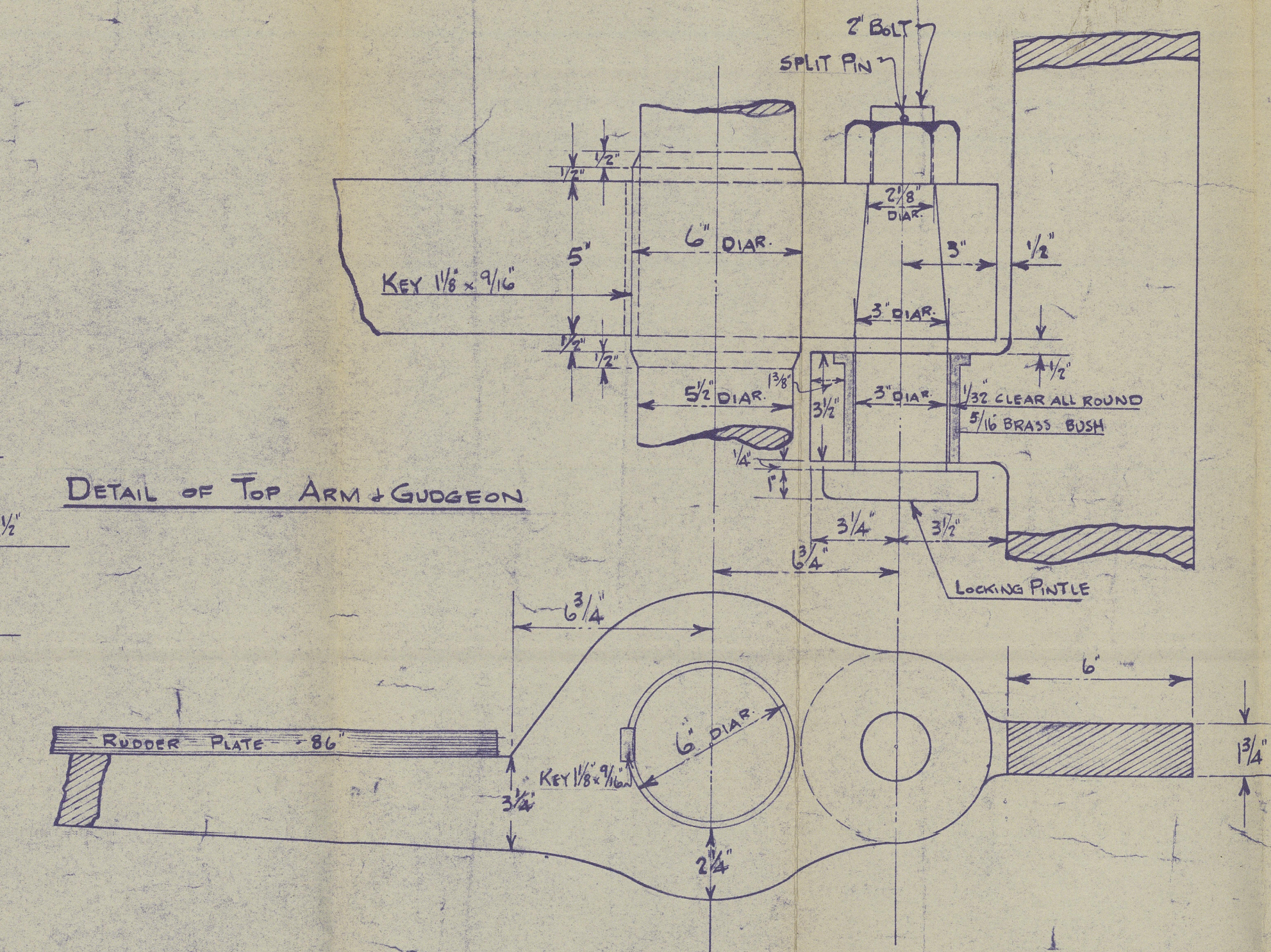
STEERING CHAINS $\frac{3}{4}$ " DIAR. RODS $\frac{13}{16}$ " DIAR.

TILLER OF FORGED STEEL

To LLOYDS LATEST TEST AND REQUIREMENTS.

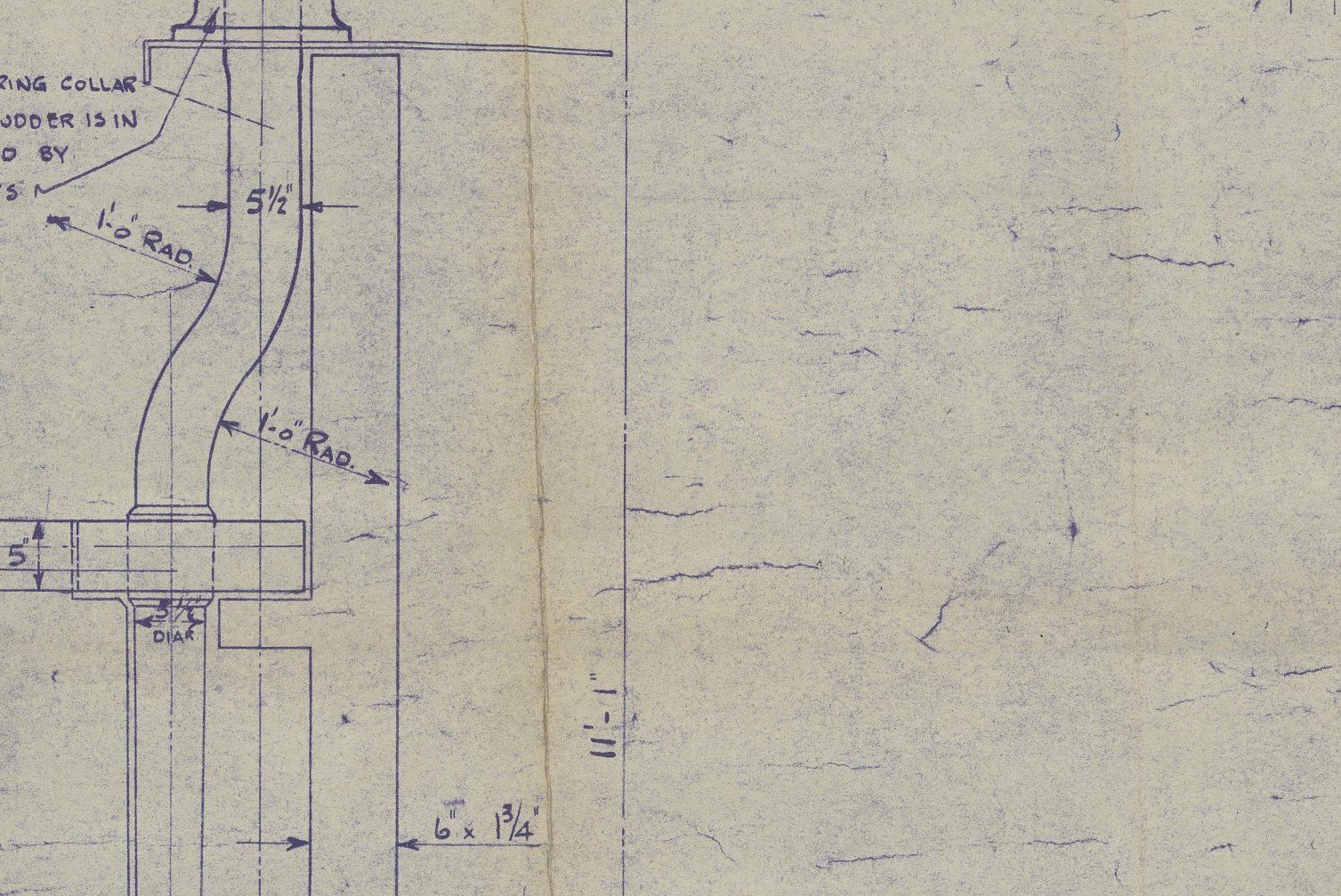


DETAIL OF TOP ARM & GUDGEON

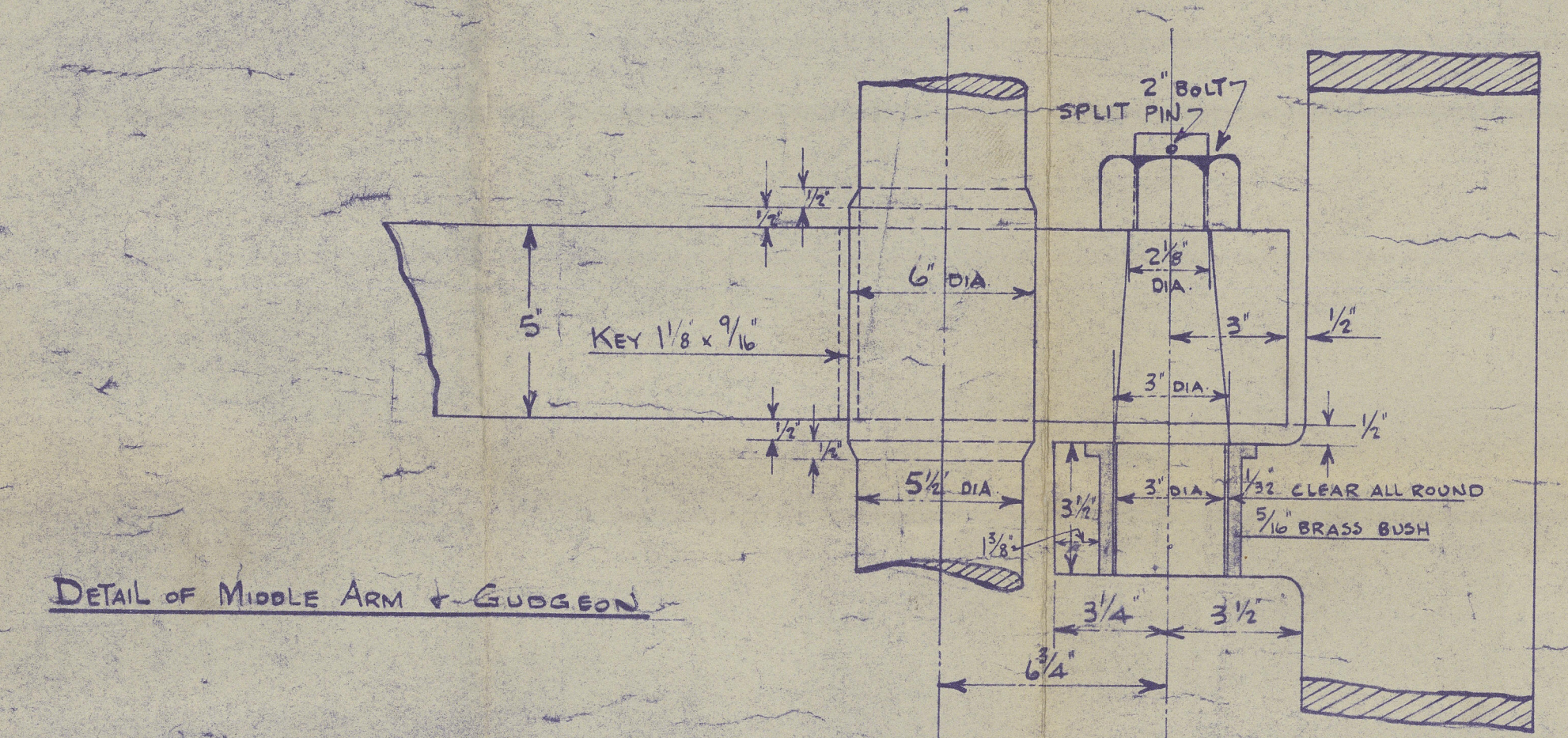


DETAIL OF TILLER

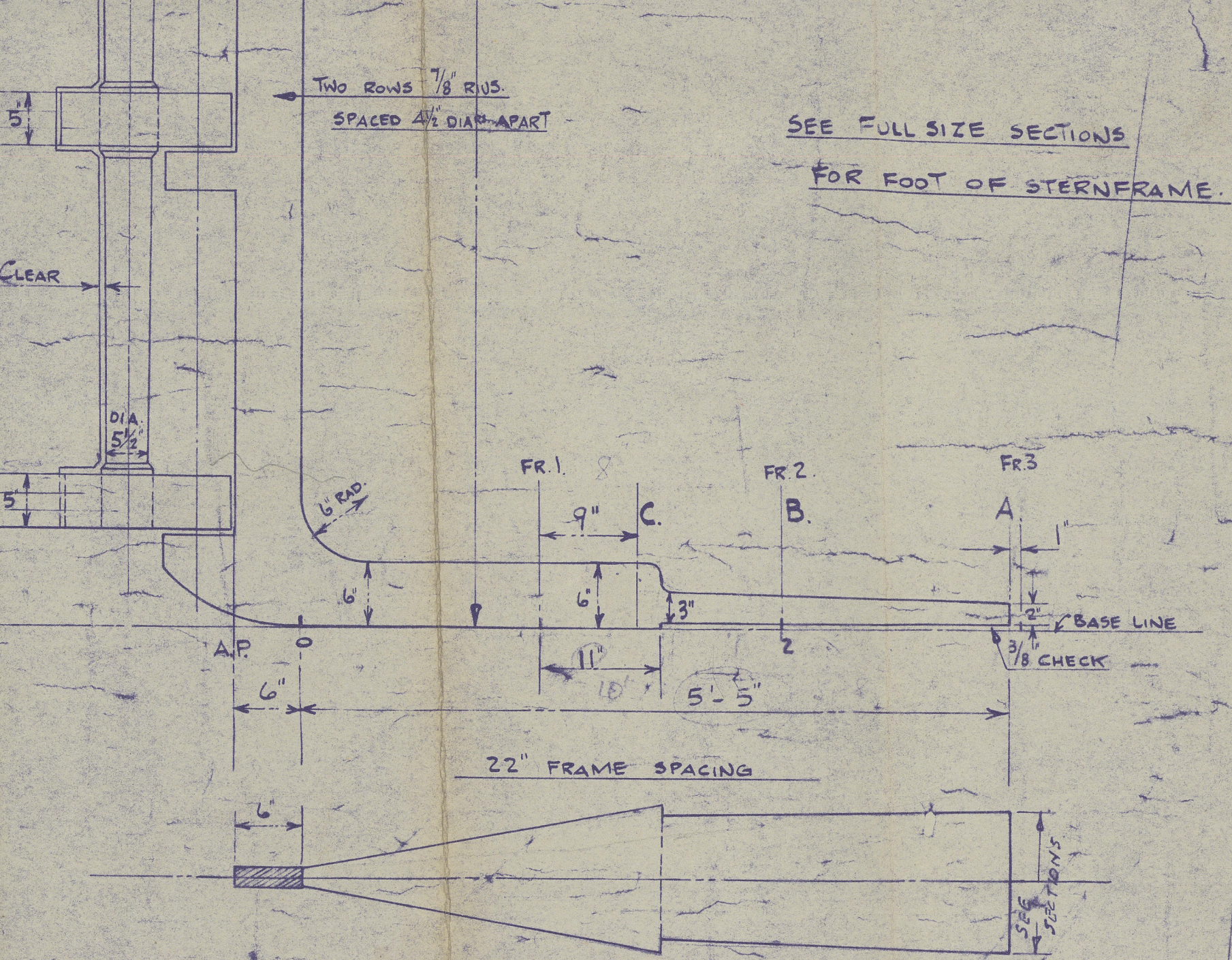
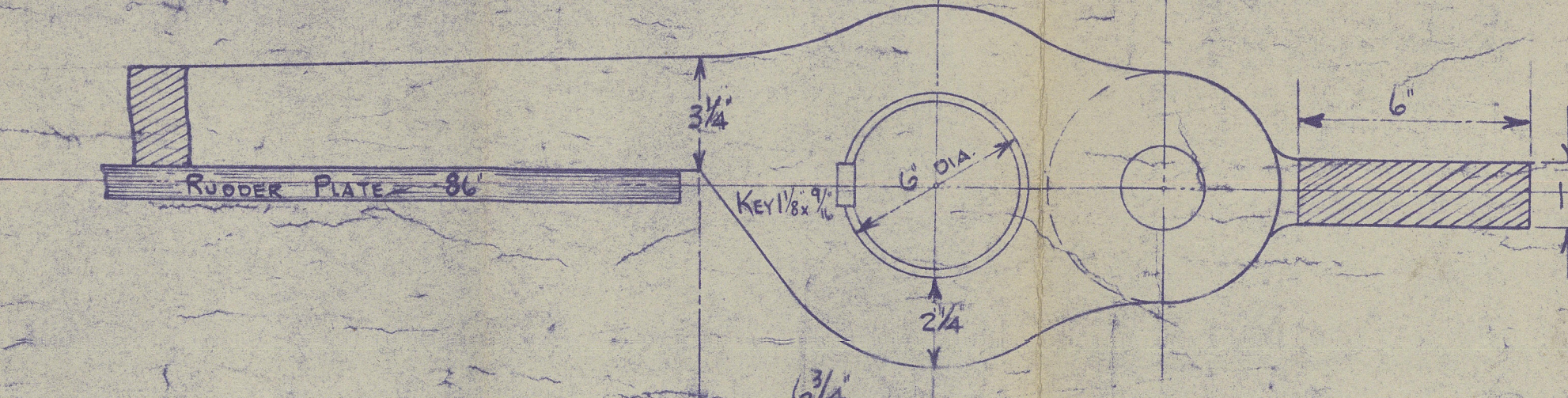
SCALE: $1\frac{1}{2}" = 1'-0"$



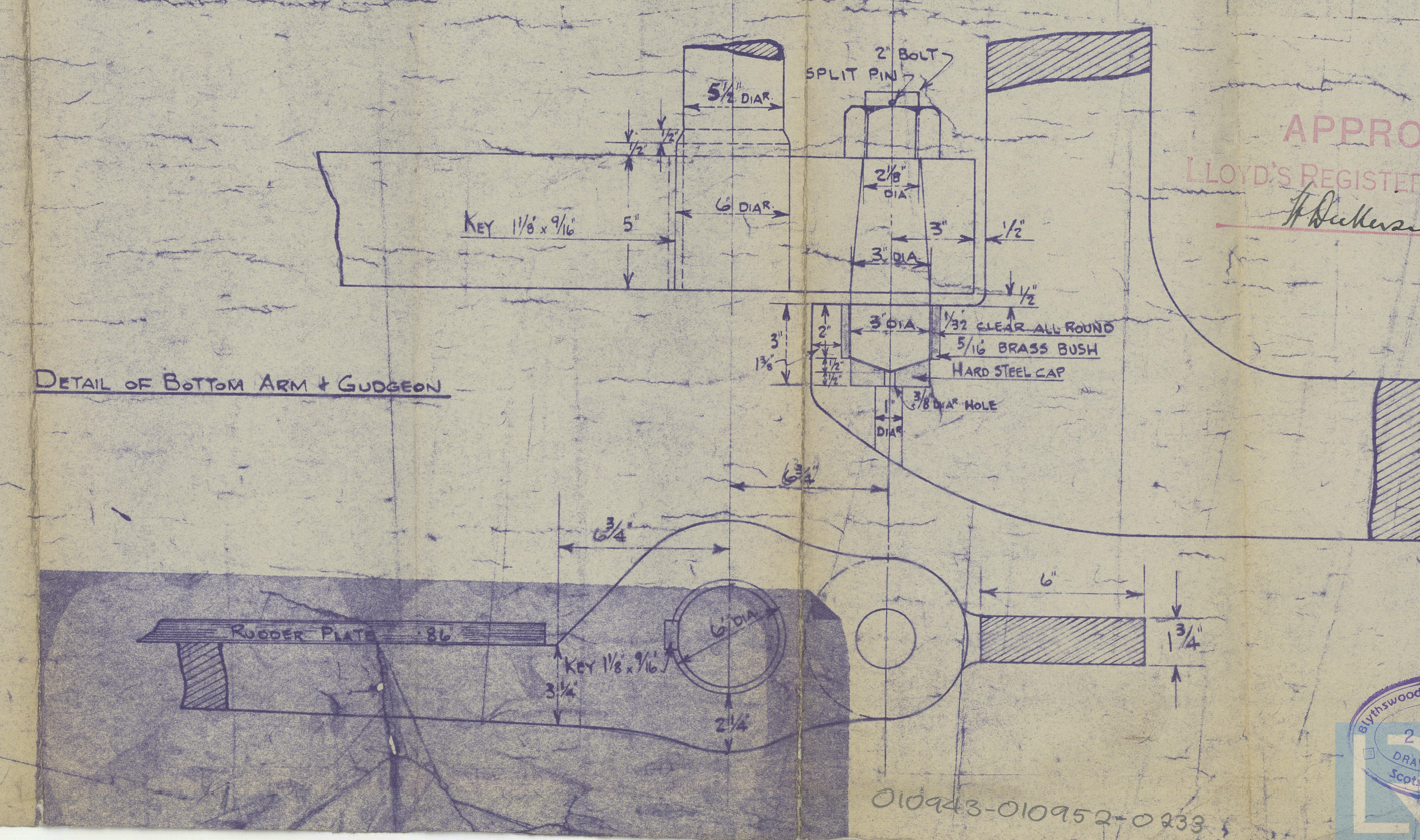
SEE FULL SIZE SECTIONS
FOR FOOT OF STERNFRAME.



DETAIL OF MIDDLE ARM + GUDGEON



DETAIL OF BOTTOM ARM & GUDGEON



APPROVED
LLOYD'S REGISTER OF SHIPPING

DATE 4-5-28

(2)

Wm. Rlythwood L.B. Co.

No 56.

Sternpost and Rudder

ORDOLINA

GLASCOW REPORT No 60130

010943-010952-0233



Lloyd's Register
Foundation