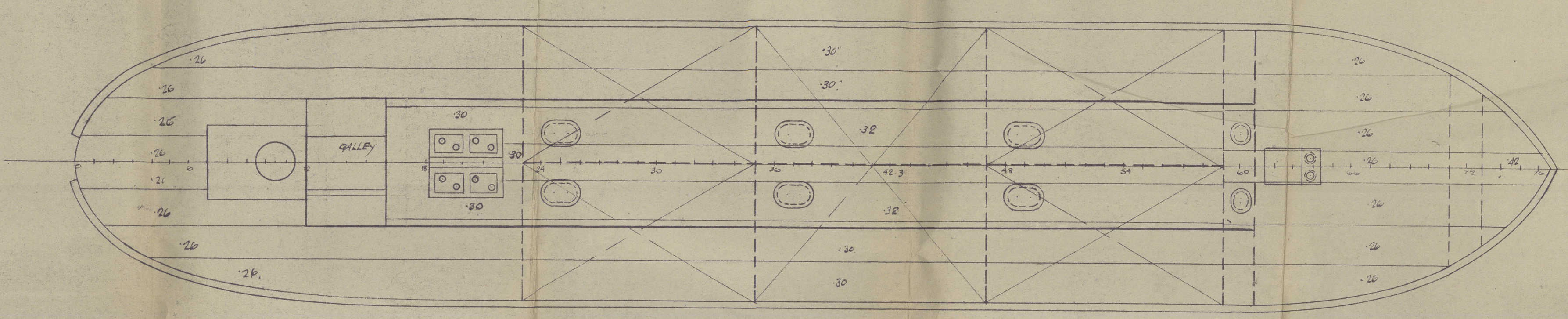
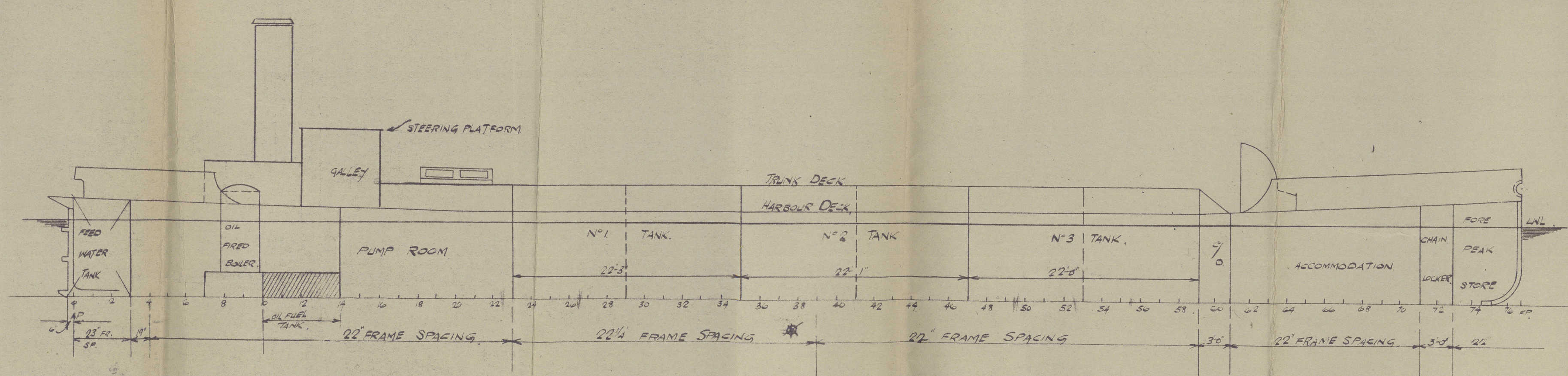


**N° 56 SHIP.**  
**PROFILE & DECK, MIDSHIP & END SECTIONS.**  
**DIMENSIONS: 140'-0" B.P. x 26'-0" B.M. x 8'-6" D.M.L.**  
 SCALES: ARRANGEMENT 1/8" = FOOT SECTIONS 1/4" = 1 FOOT  
 TO CLASS 100 A BARGE CARRYING OIL FUEL IN BULK FLASH POINT  
 ABOVE 150° F. FOR HARBOUR SERVICE AT RIO DE JANEIRO.

**RIVETING LIST.**

	ONE LINE NO. OF RIV.	ONE LINE CLEARANCE	ONE LINE DIST. BT.
KEEL SEAMS	3 1/2	4	1/2
KEEL BUTTS	3 1/2	3 1/2	1/2
SHELL SEAMS	3 1/2	4	5/8
SHELL BUTTS	3 1/2	3 1/2	5/8
DECK, TRUNK TOP & SIDE SEAMS	3 1/2	4 1/2	5/8
DECK, TRUNK 30° SIDE BUTTS	3 1/2	4	5/8
BULKHEAD SEAMS	3 1/2	4 1/2	5/8
BULKHEAD BUTTS	3 1/2	4 1/2	5/8
BULKHEAD STIFFENERS	5	5 1/2	5/8
FRAMES TO SHELL	6	7	5/8
FRAMES TO FLOOR	7	7	5/8
BEAMS TO DECK	6	7	5/8
KEEL BOTTOM ANGLES	5	6	5/8
BRACKET ATTACHMENTS	5		
FLOOR LAPS ON FRAMES	4		

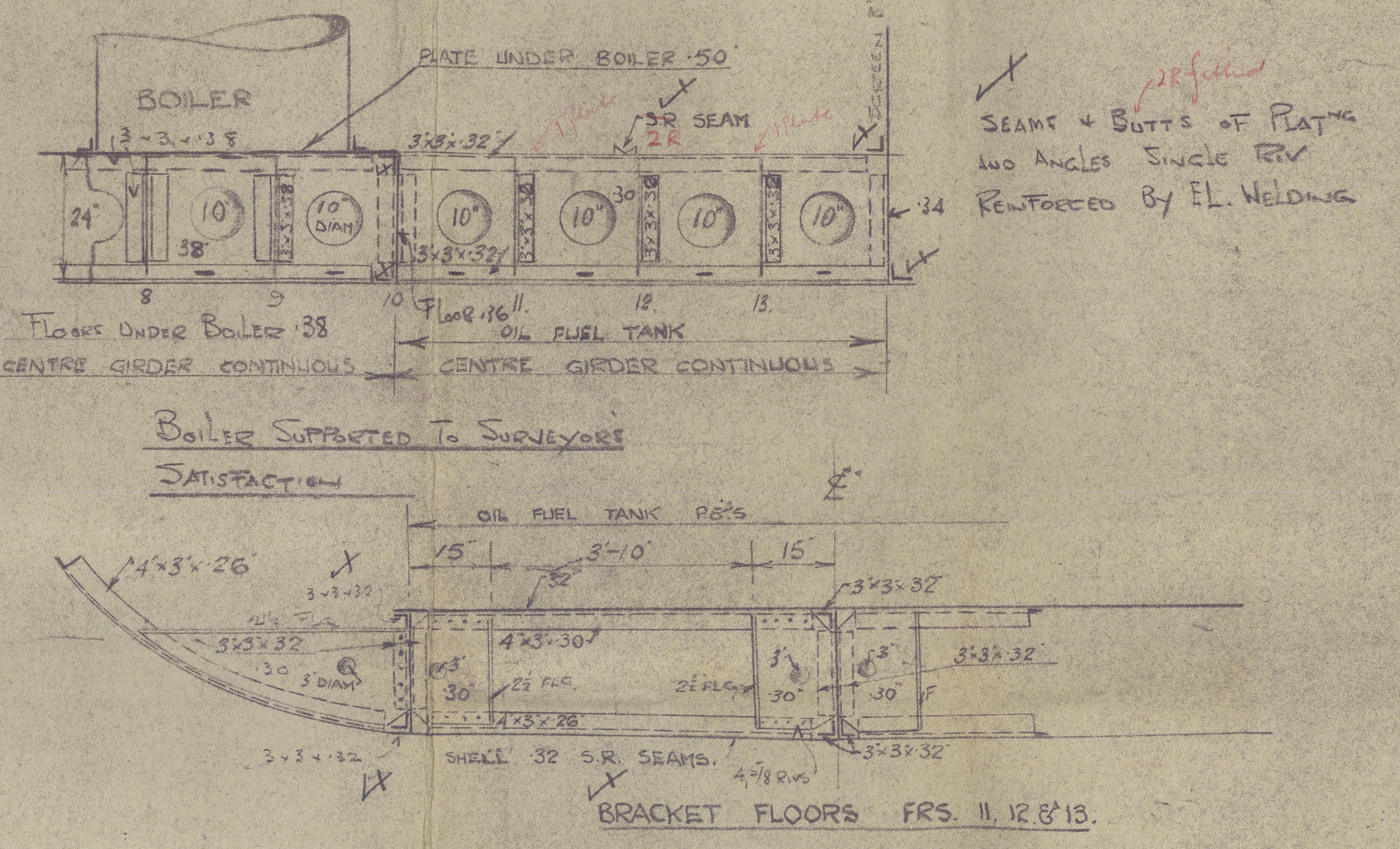
5/8" DIA. FOR 1/2" L.  
 5/8" FOR 1/2" L.



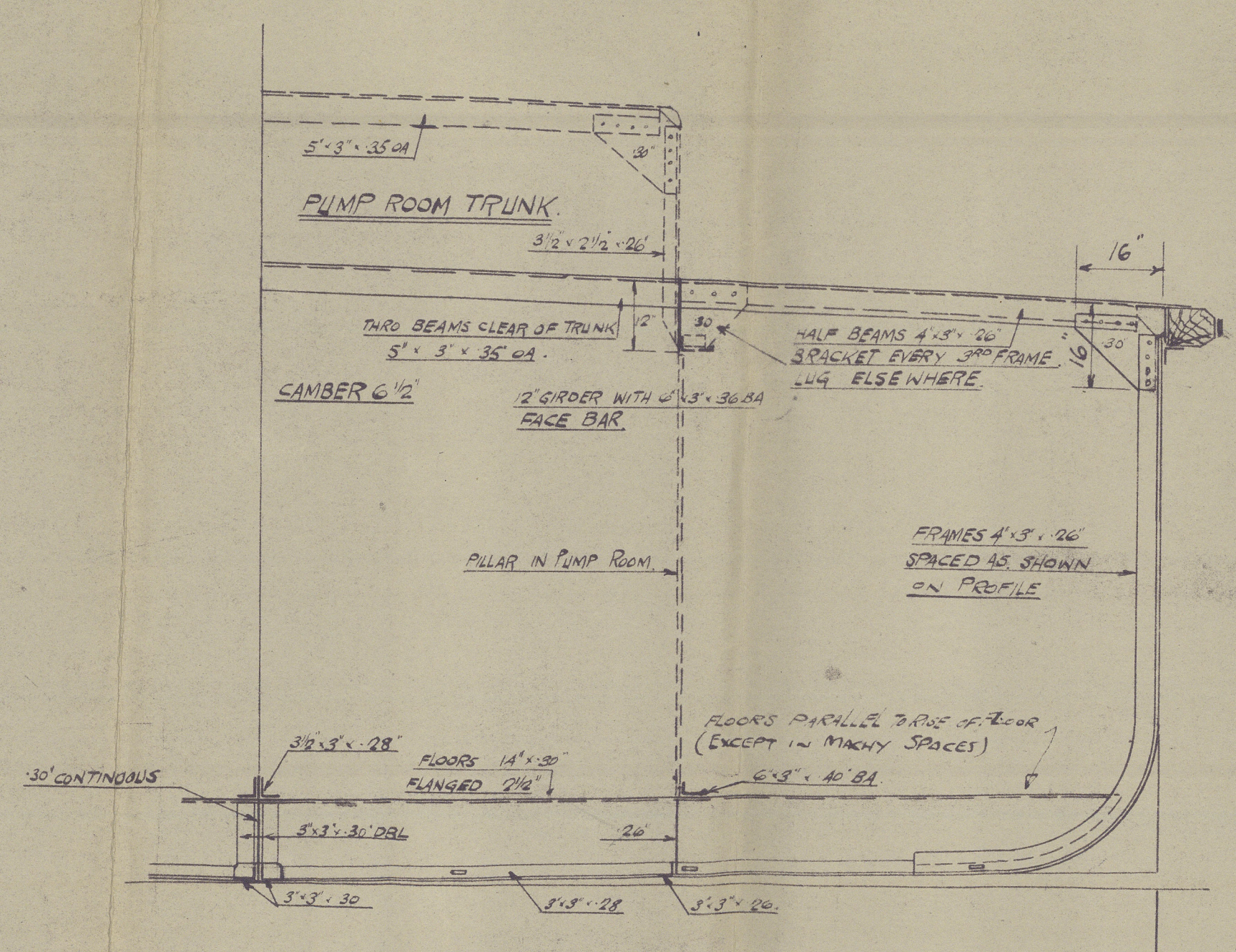
**NUMERALS.**  
 D = 8'5."  
 L x D = 1190'-0."  
 L (B+D) = 4830'-0."  
 S = 16'5."  
**EQUIPMENT.**  
 1 STOCKLESS ANCHOR  
 75 FT. TO RATHONS 1/2" STUD LINK CHAIN CABLE  
 STERN BAR 6" x 1/2"  
 STERN FRAME 1/2" x 1/2"

**SHIP N° 56**  
**OIL FUEL TANK**

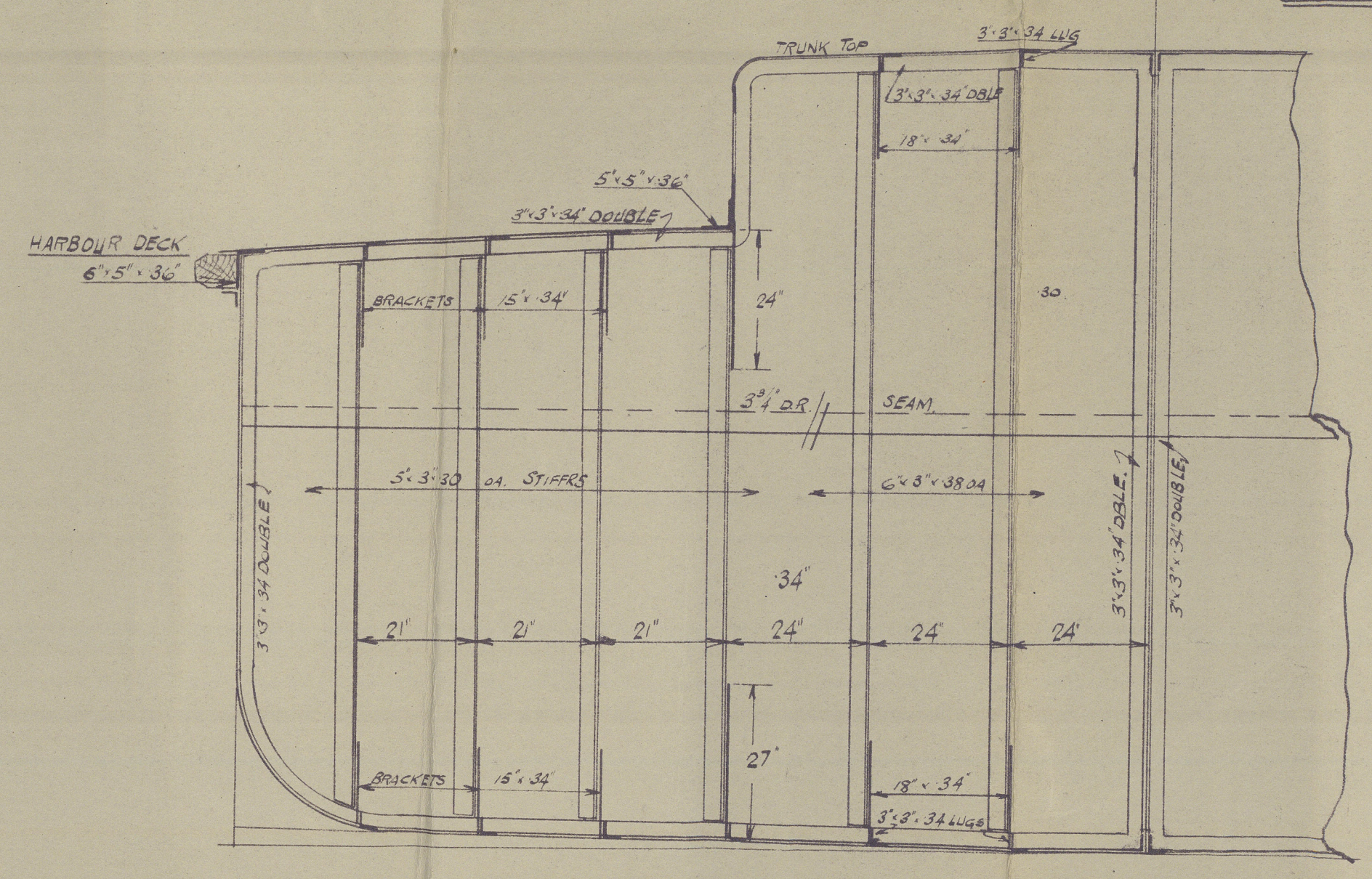
SCALE: 1/8" = 1 FOOT



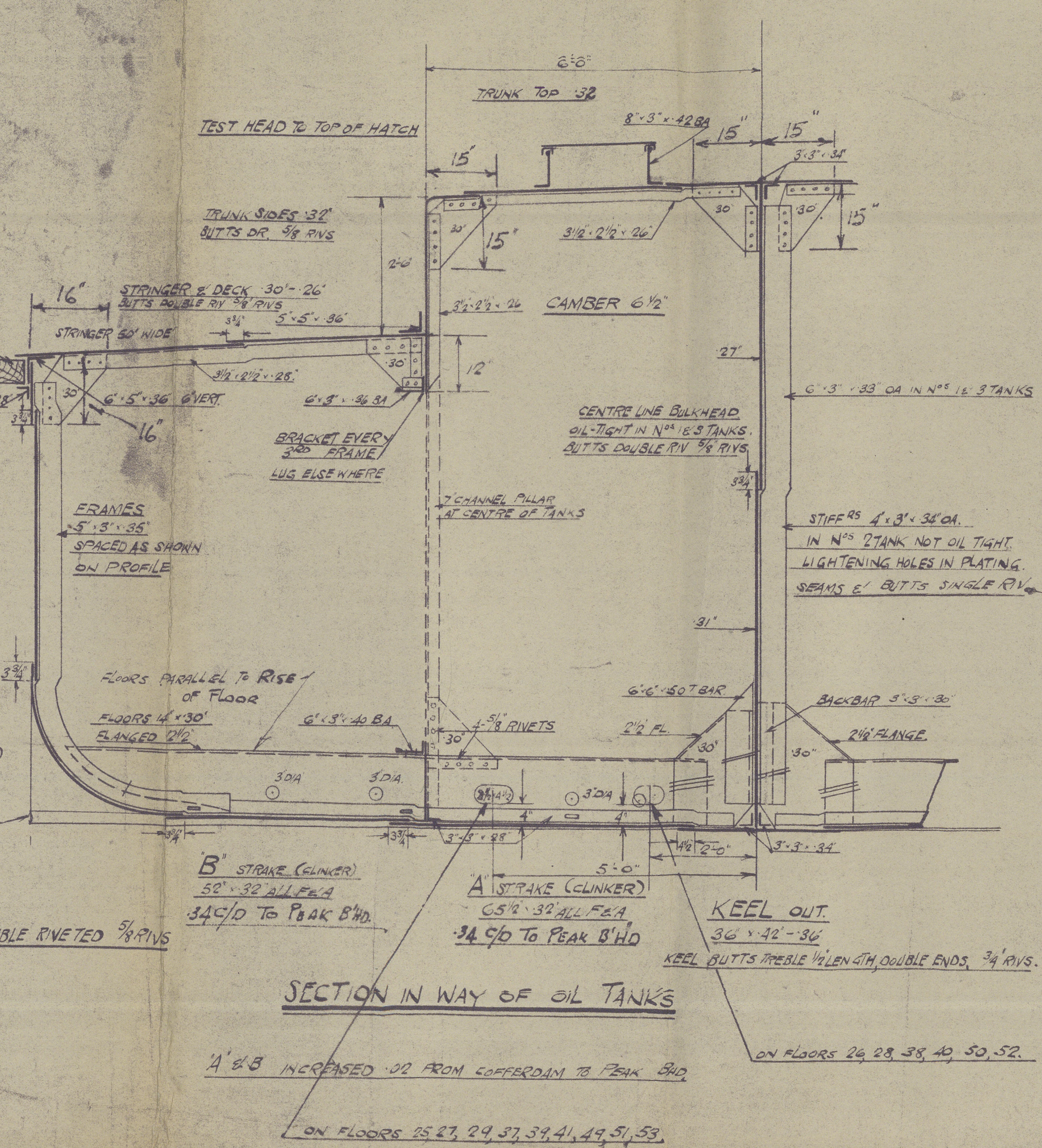
Boiler Supported To Surveyors  
 Satisfaction



**SECTION CLEAR OF OIL TANKS**



**O.T. BULKHEAD**



**SECTION IN WAY OF OIL TANKS**

DATE: 5/24/33  
 BY: J.C.  
 10/12/30

Lloyd's Register  
 9 AUG 1933  
 DRAWING OFFICE  
 Southampton, Glasgow

010943-010953-23320



Marolima

Stylshwood S. B. Co. Ltd.

N<sup>o</sup> 56

Non-Propelling BARGE

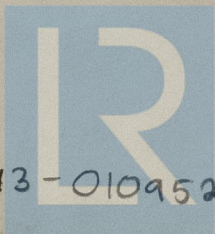
"ORDOLINA"

Midship Section & Profile  
& Deck. (as built).

GLASGOW REPORT No 60130

Similar to "Marolima"

No 41 Gls rpt 57171



© 2020

Lloyd's Register  
Foundation

010943-010952-0232