

6 MAR 1959

Secondary means of steering to be provided.

YARD No 16 (Dumb AVIATION SPBIT LIGHTER)

RUDDER PLAN

Scale 1" = 1 FOOT AS SHOWN

SPEED LESS THAN 10 KNOTS

STEERING EQUIPMENT

CHAINS ~ 3/4"

RODS ~ 1 1/2"

SPARE GEAR

- 1 COMPLETE BUFFER
- 1 BUFFER SPRING
- 2 SPARE TESTED CHAINS TO SUIT MAX LENGTH
- 2 WARWICK SCREWS
- 4 CONNECTING LINKS
- 4 ROD PINS

4 Shackles.

$$A = 22.25$$

$$D = 2.75$$

$$A \times D = 28.25 \times 2.75$$

$$= 77.6875$$

CHECK AT SHIP

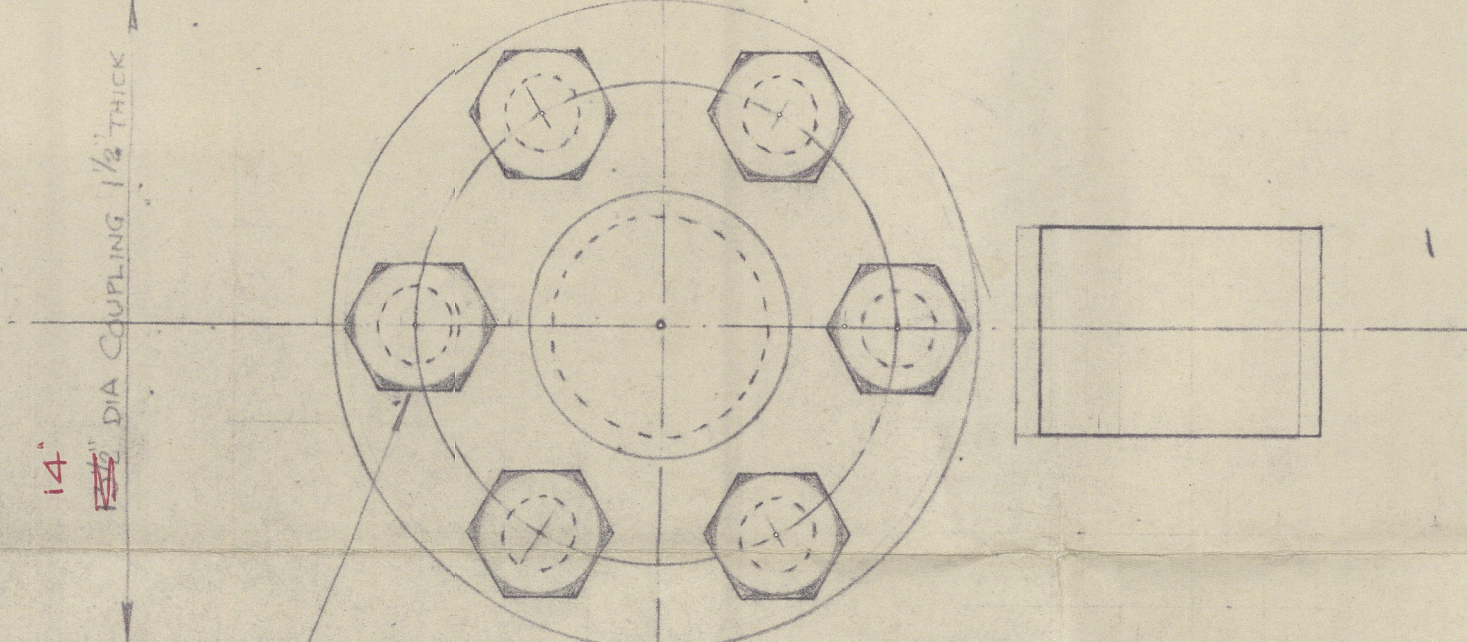
5 3/4" diam. in way of bearing gradually reduced above bearing

UPPER BEARING CAST IRON WITH PH BRONZE BUSH

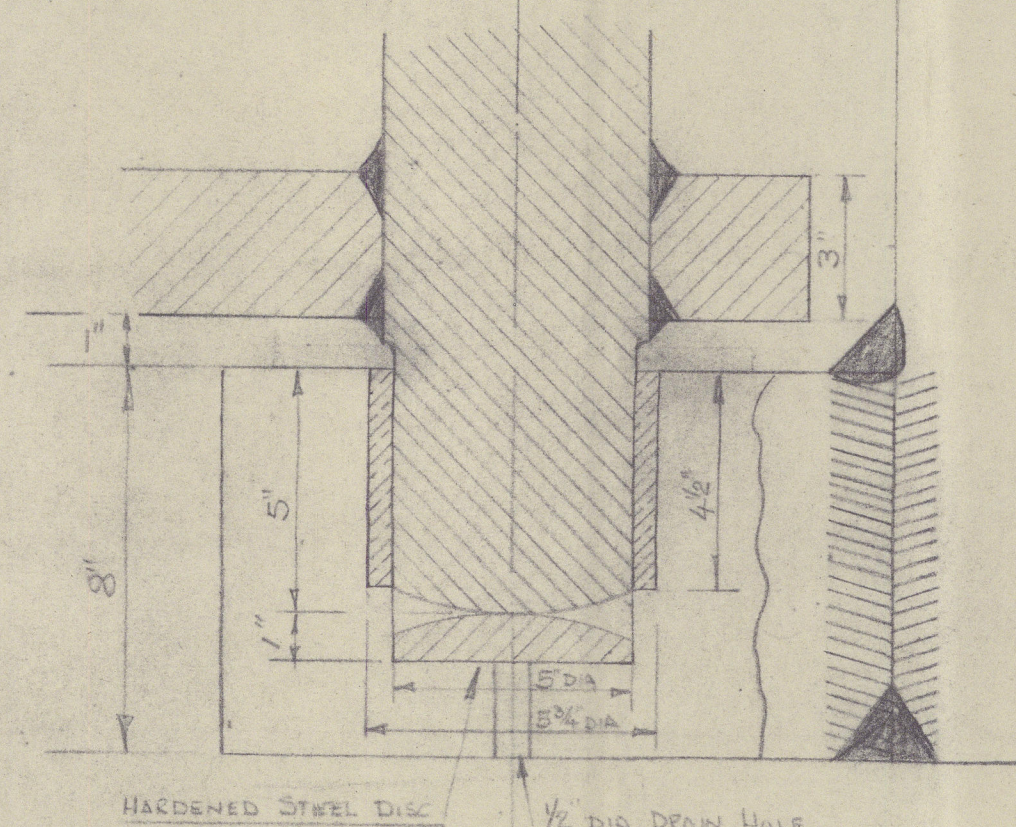
Edges of bolt holes to be radiused

Welding of upper coupling flange lower one similar

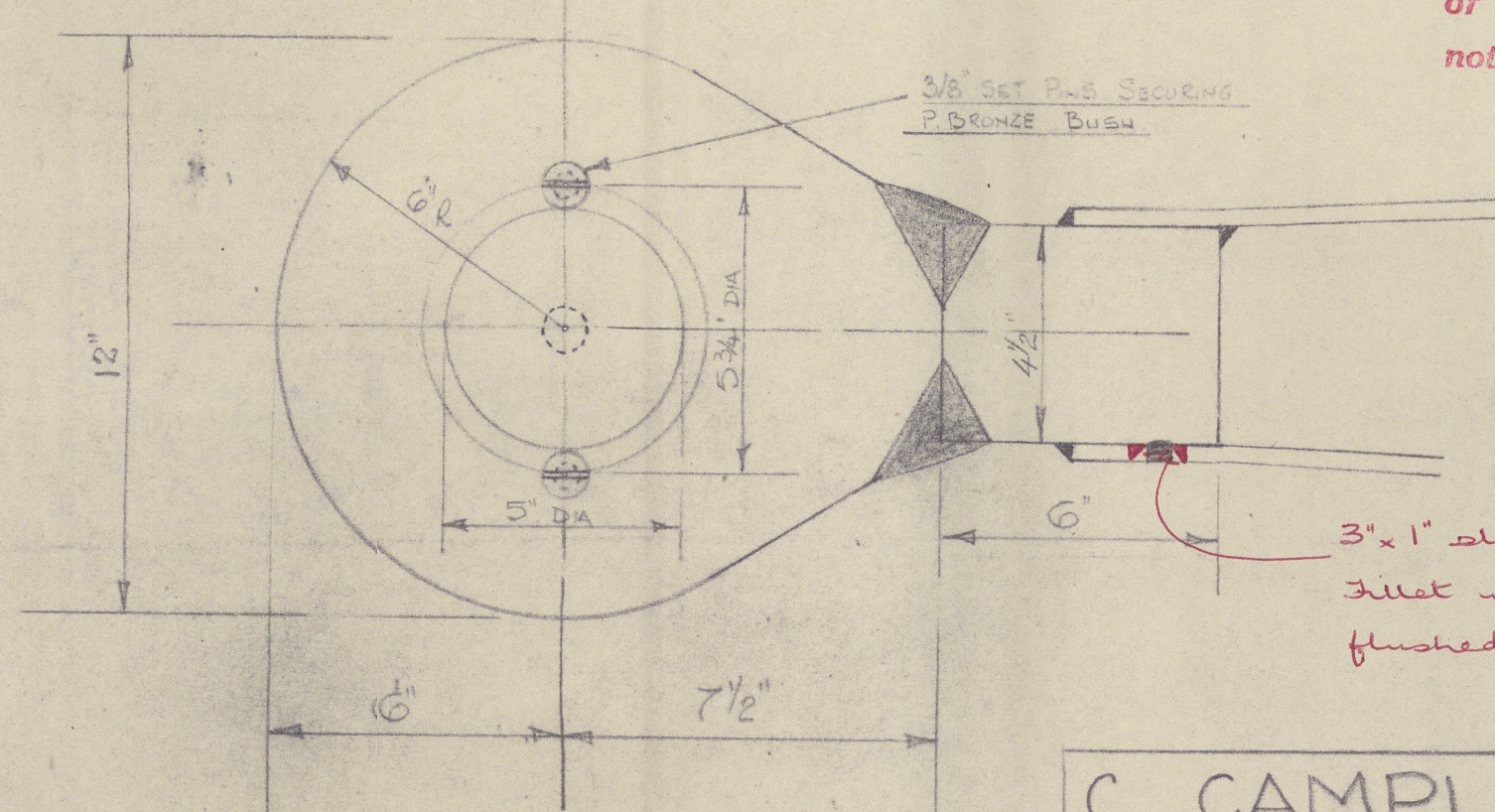
DETAIL OF RUDDER COUPLING



2-1/2" DIA FITTED BOLTS ON 10" P.C.D. WITH NUTS & SPLIT PINS



DETAIL OF LOWER PINTLE



Castings and/or Forgings to be of Weldable Quality containing not more than 0.22% Carbon.

3" x 1" slots fillet welds slots flushed with composition

C CAMPLING (GOOLE) LTD

GOOLE Drawn by: Date: 31.1.58 YORKS

010943-010952-0069

© 2020

Lloyd's Register Foundation

C. 871 .

b. Sampling (book) led yard no 16.

Null. FE, Report no 66257.

RECORDS DEPT.
LONDON.



Riddle Plan



© 2020

Lloyd's Register
Foundation

010943-010952-0060