

CONSTRUCTION NOTE -
 RUDDER PLANS TO BE Laid ON TOP OF BOTTOM PLATE
 ALL WOOD SURFACES OF RUDDER TO BE COVERED WITH BUTYRUBBER
 BUTYRUBBER TO BE FILLED IN POKE COMPARTMENTS TO TOP PLATE LEVEL
 TOP PLATE Laid ON POSITION, BUTYR RUBBER FILLED COMPLETE & SAND CAULKED
 CLOSING DISCS WELDED INTO PLATING HOLES & FILLED WITH SAND LUTING EYE
 WRAPPER PLATES "FITTED" IN POSITION & WELDED AS INDICATED

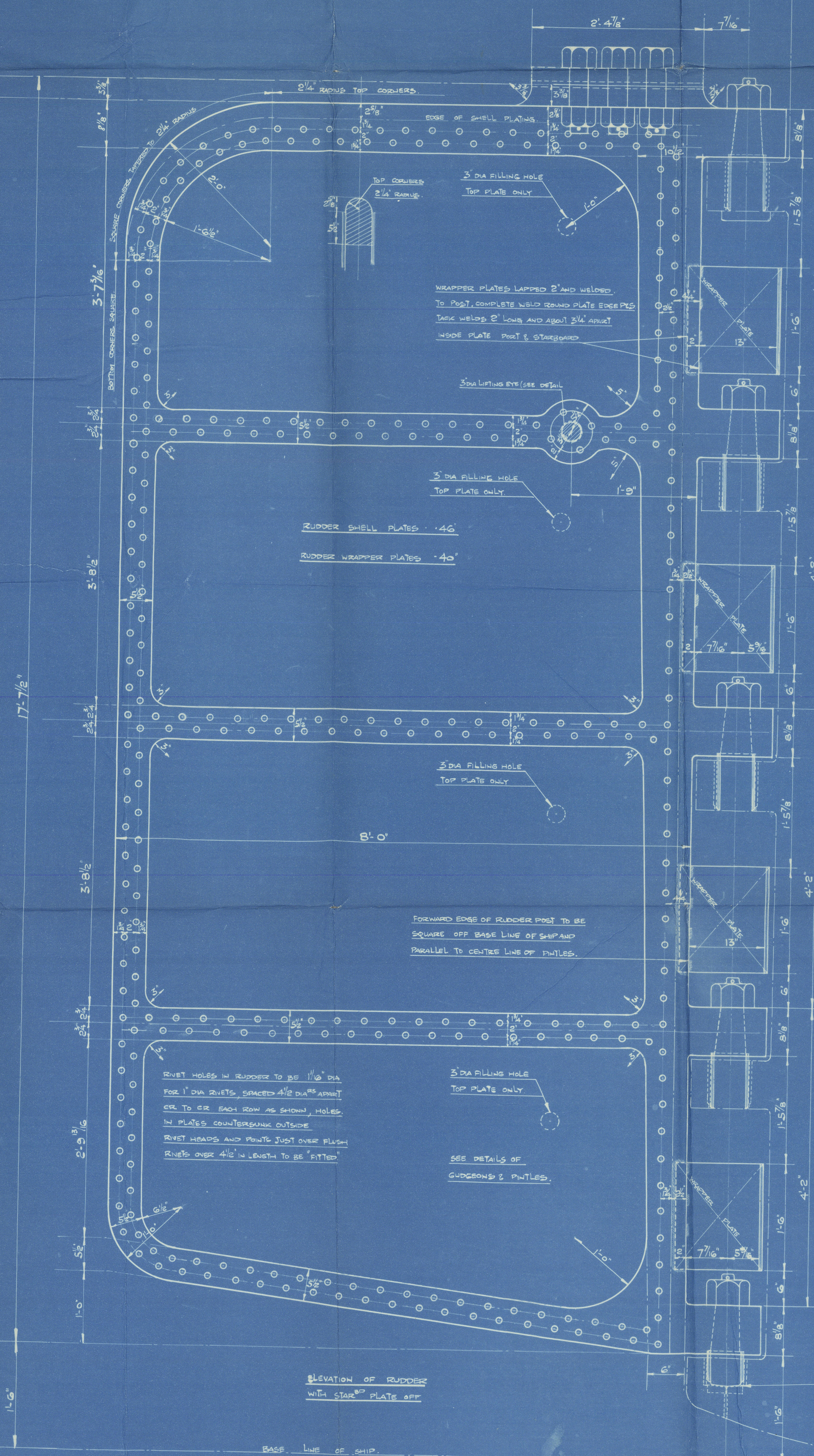
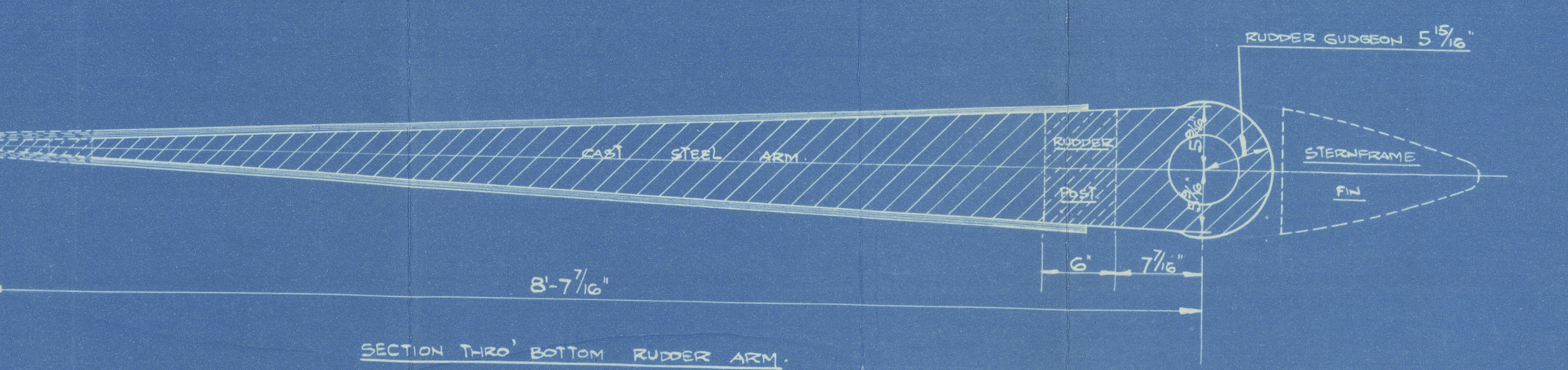
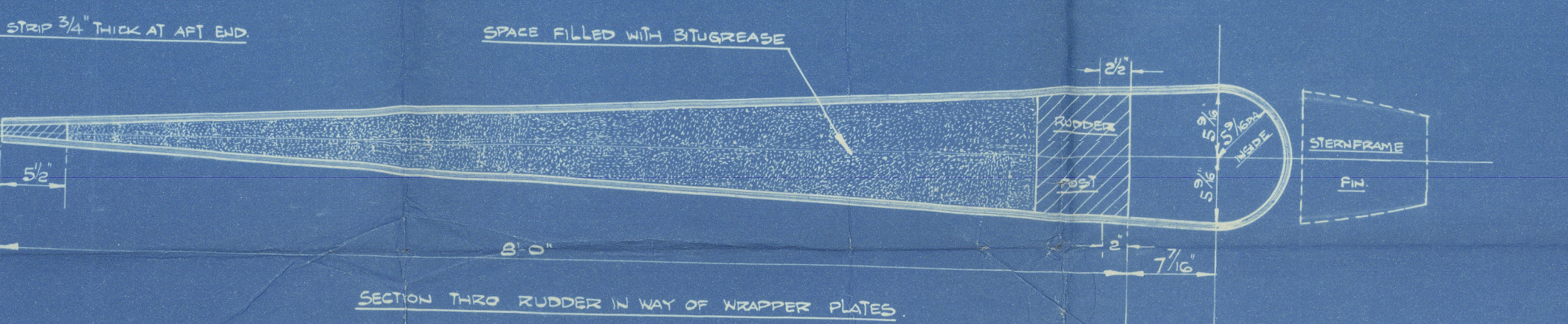
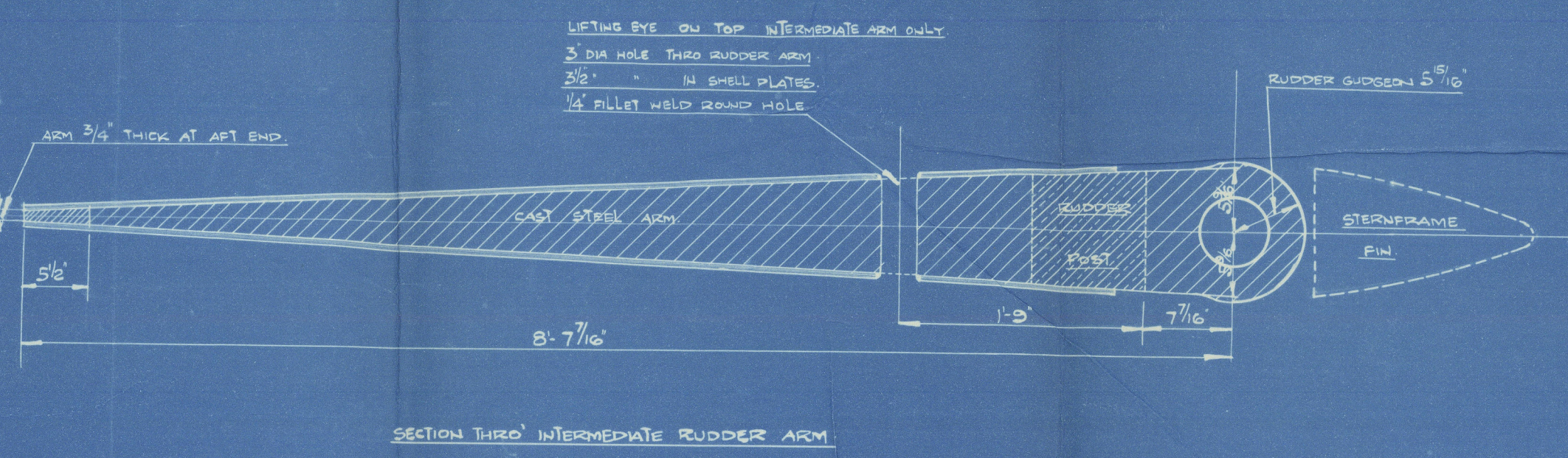
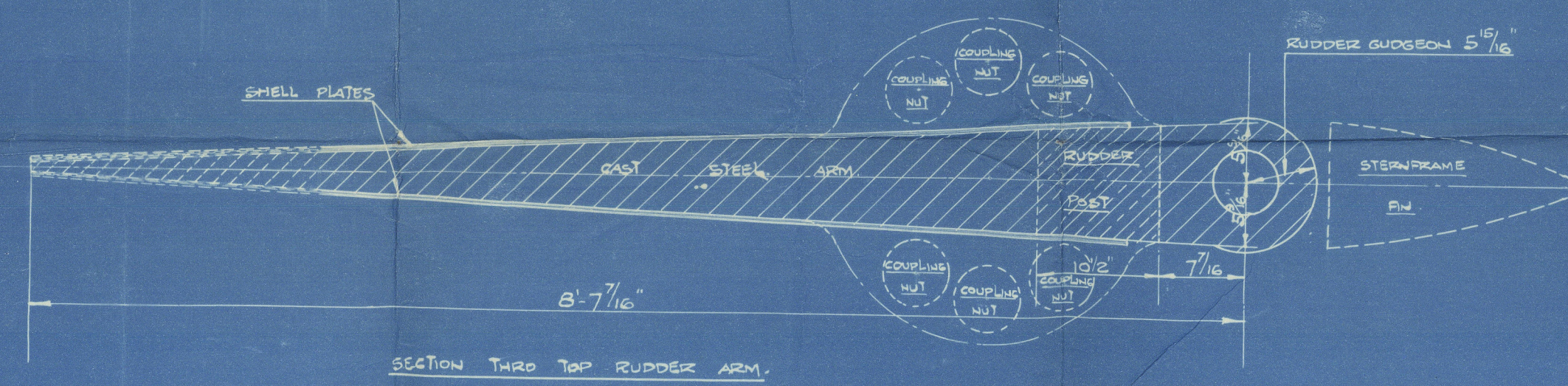
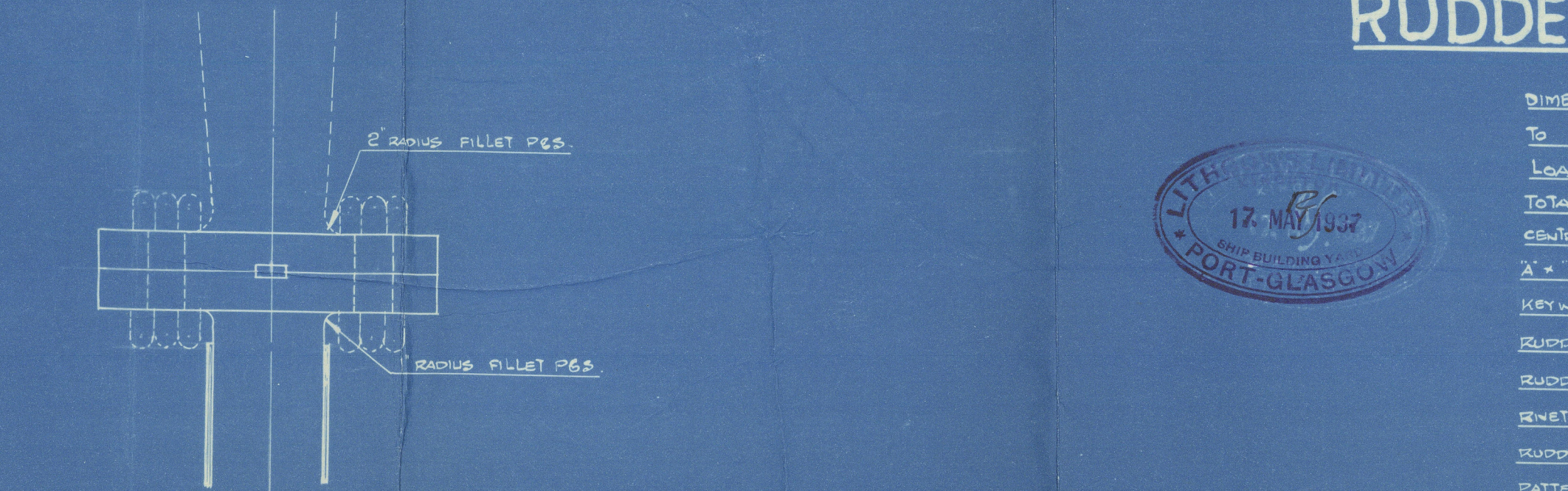
STREAMLINE RUDDER.

S.M.V. N° 906. - 930.

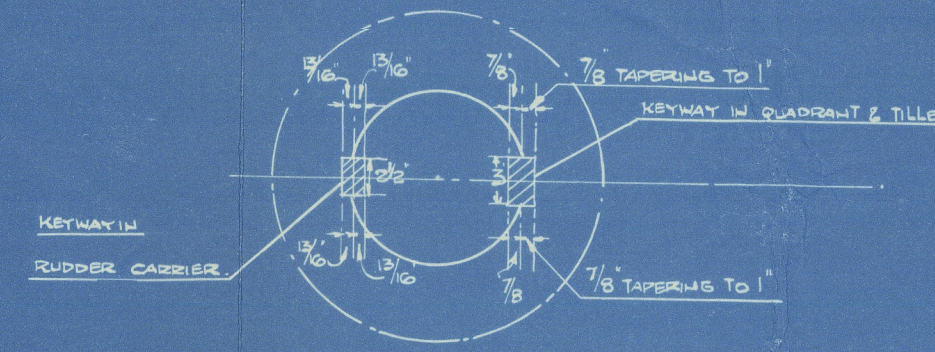
SCALE 1" = ONE FOOT.

RUDDER STOCK - BEST FORGED STEEL. RUDDER FRAME - BEST QUALITY STEEL CASTING.

DIMENSIONS - 425'-0" B.P. - 55'-0" MID X 87'-0" MID TO BROWWIDECK X 35'-0" MID TO UPPER DECK
 TO CLASH 100AL WITH PREBOARD AT LLOYDS SPECIAL SURVEY
 LOAD DRAFT 24'-0" SPTED 12 KNOTS
 TOTAL UNWEIGHED AREA OF RUDDER FROM REAR SIDE OF RAIL = 134.50 SQ FT
 GRADE OF GRAVITY OF RAIL FROM CENTER LINE OF RAIL = 4.60 PER CENT
 2 1/2" DIA. OF RAIL (11/8")
 KEYHOLE TO BE CUT IN RUDDER STOCK TO GIVE PARTICULARS.
 RUDDER STOCK TO BE ACCURATELY TURNED TO CURVED SURF.
 RUDDER FRAME TO BE ACCURATELY CAST TO SHAPE AS PER DETAILS.
 RUST HOLES TO BE BORED PLUMP THREE FRAMES, SEE MUST NOT BE LESS THAN 5/16"
 RUDDER NOT TO EXCEED GIVEN SCANTLING, EXCEPT OVER SCANTLING WEIGHT WILL NOT BE PAID FOR
 PATTERN OF RUDDER FRAME TO BE APPROVED BY SURVEILLANCE DESIGNER BEFORE CASTING.



NOTE - KEYHOLE CUT SQUARE BORED AND DEPTH OF KEYHOLE
 MEASURED AT CENTER LINE OF RUDDER STOCK



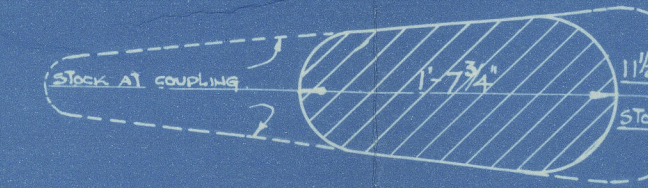
HEAD OF RAIL ABOVE BASE LINE OF SHIP - 4'-7 1/2"
 LENGTH OF RUDDER STOCK ABOVE DECK - 8'-2 1/2"
 TOTAL LENGTH OF RUDDER ABOVE BASE LINE OF SHIP - 4'-10 1/2"
 DISTANCE BETWEEN RUDDER STOCK - 13'-1 1/2"
 TOTAL LENGTH OF RUDDER STOCK - 25'-3 1/2"

NOTE - CORRECT SHAPES OF RUDDER
 GUSSETS TO BE LAYED FROM STEAMBOAT
 BY LLOYDS LIMITED AND SENT TO RUDDER WORKS.

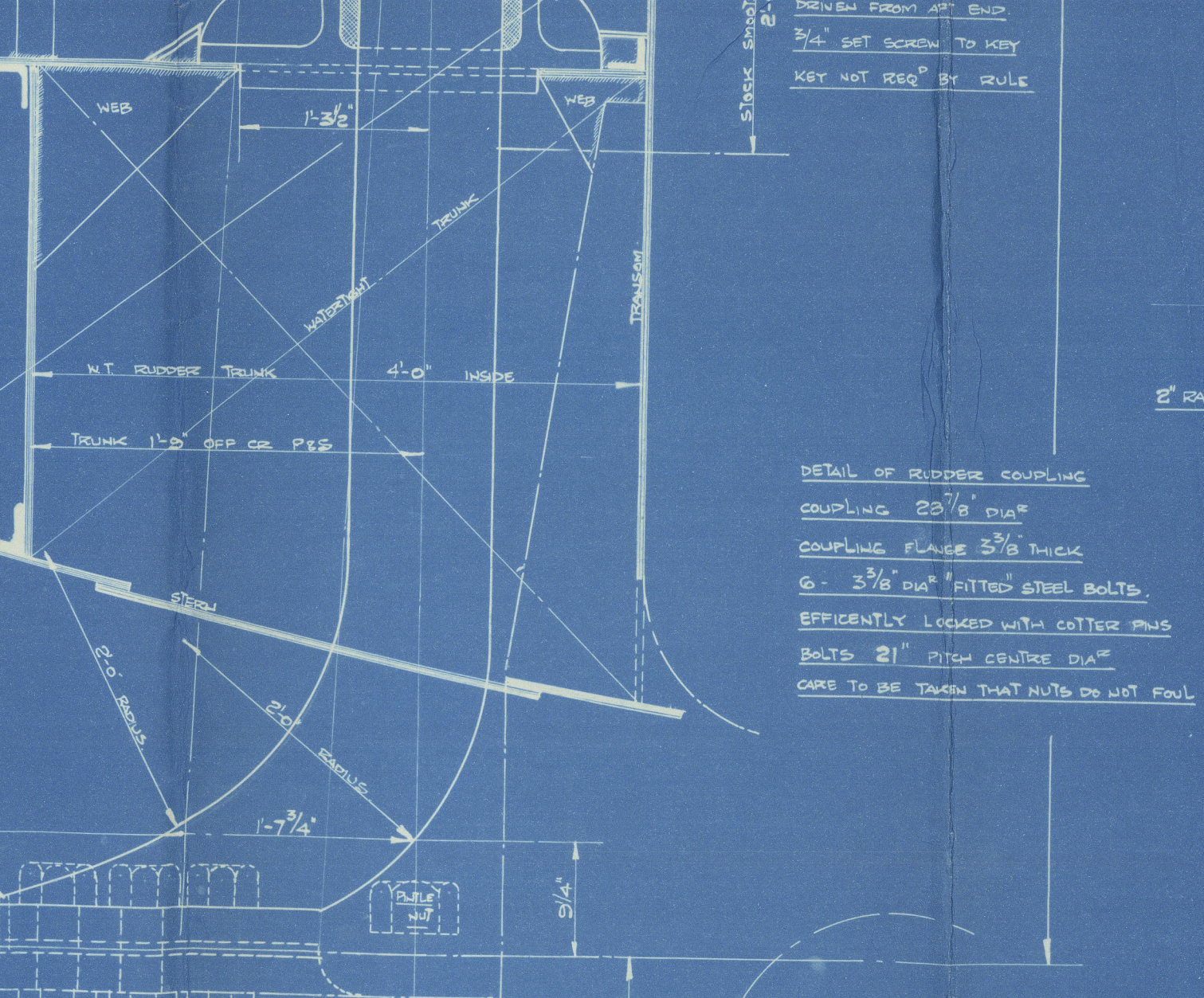
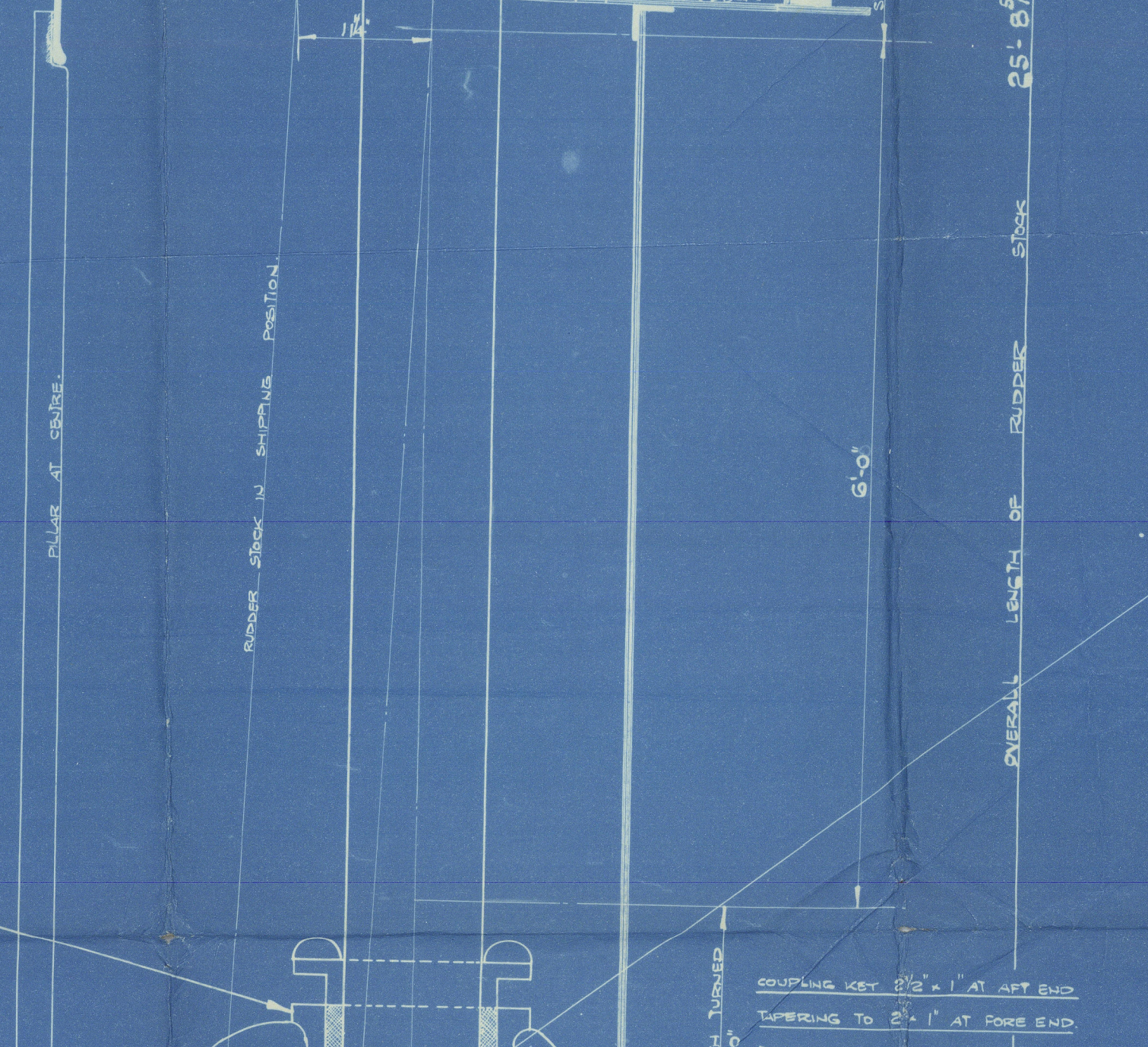
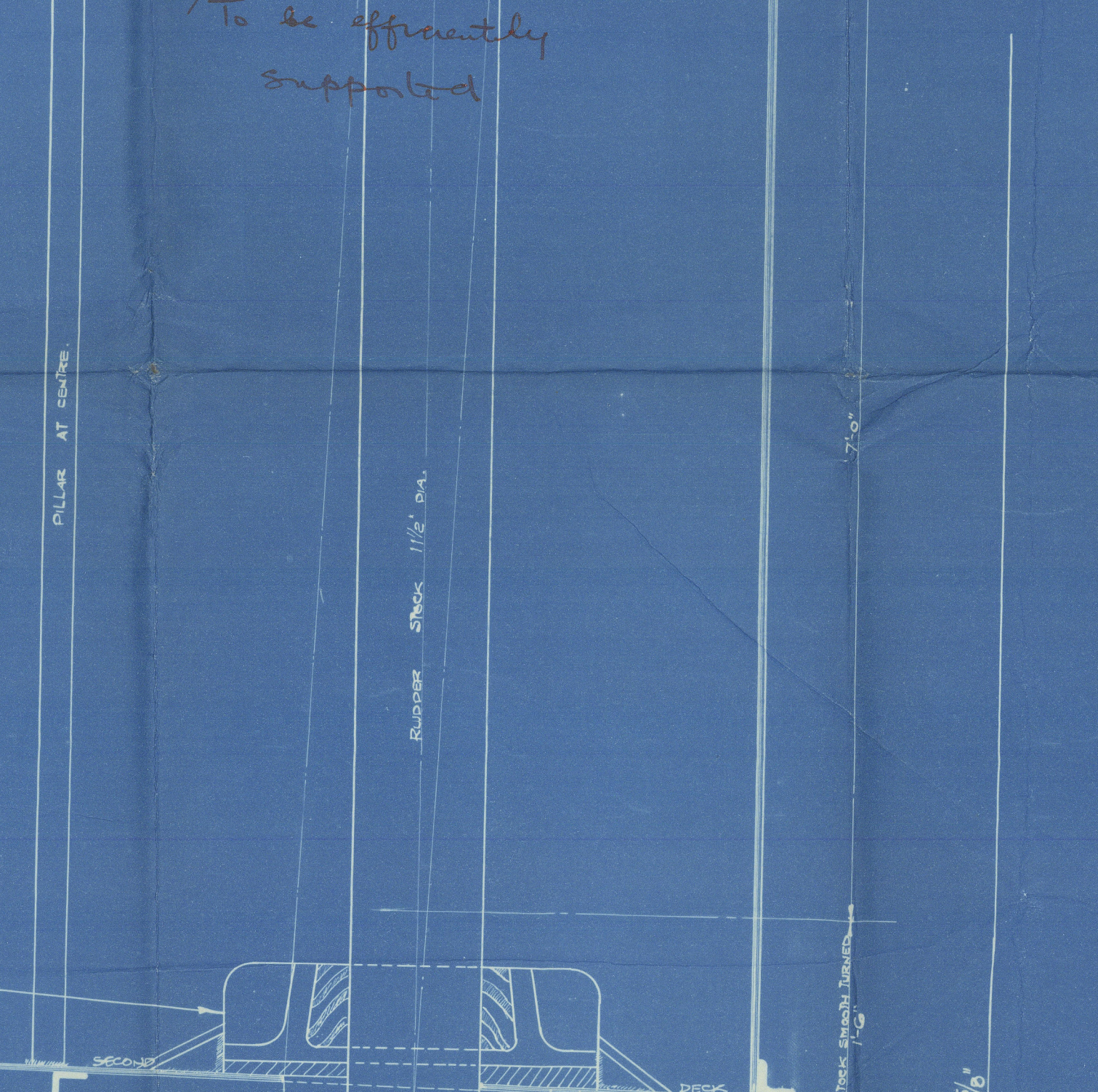
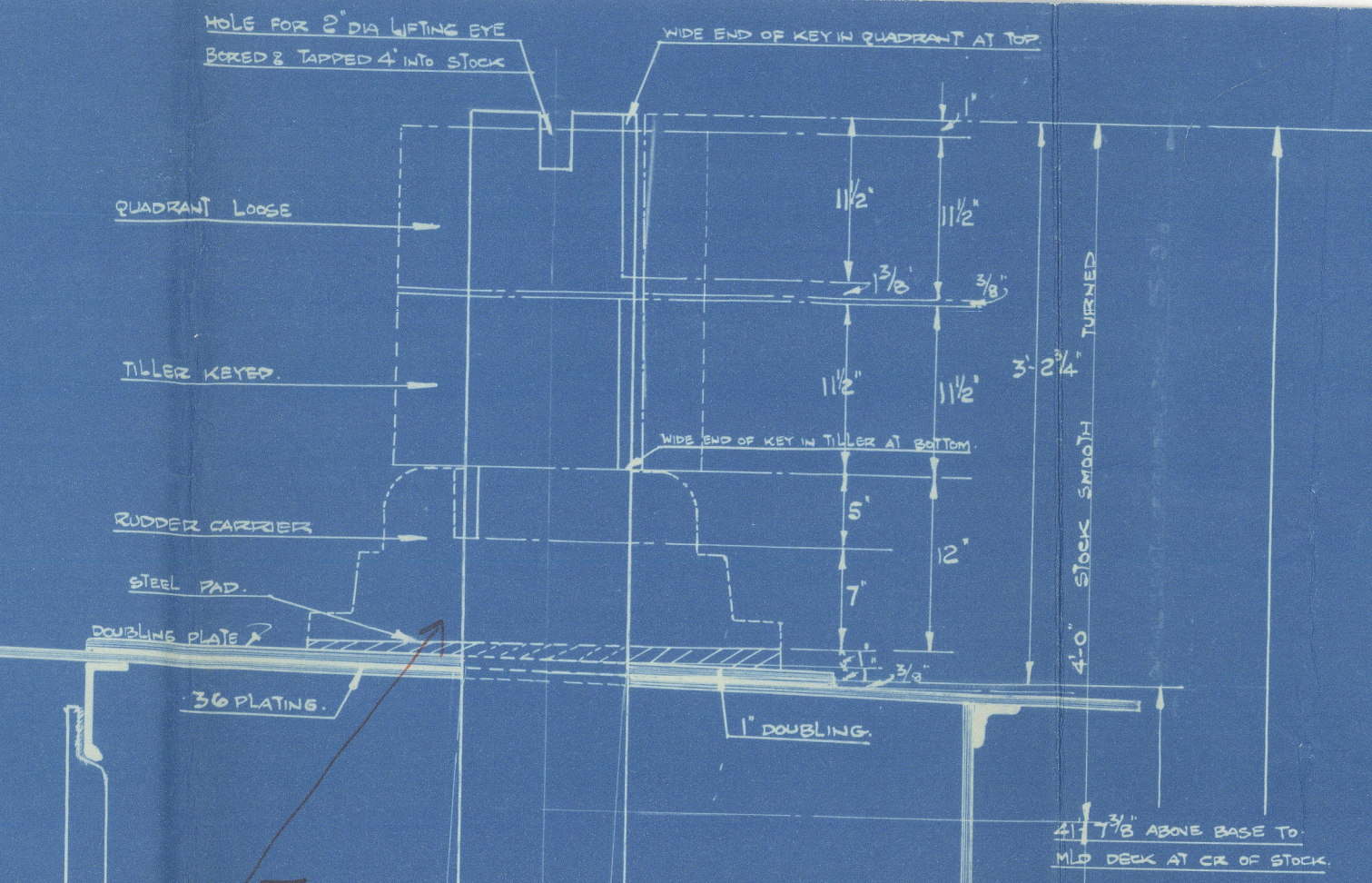
CUT HEAD LUTING WIRE CLAMP
 LUTING WIRE IN BOD BY 5/16\"/>

IT COST 100 LUTING WIRE
 LUTING WIRE IN BOD
 WITH 5/16\"/>

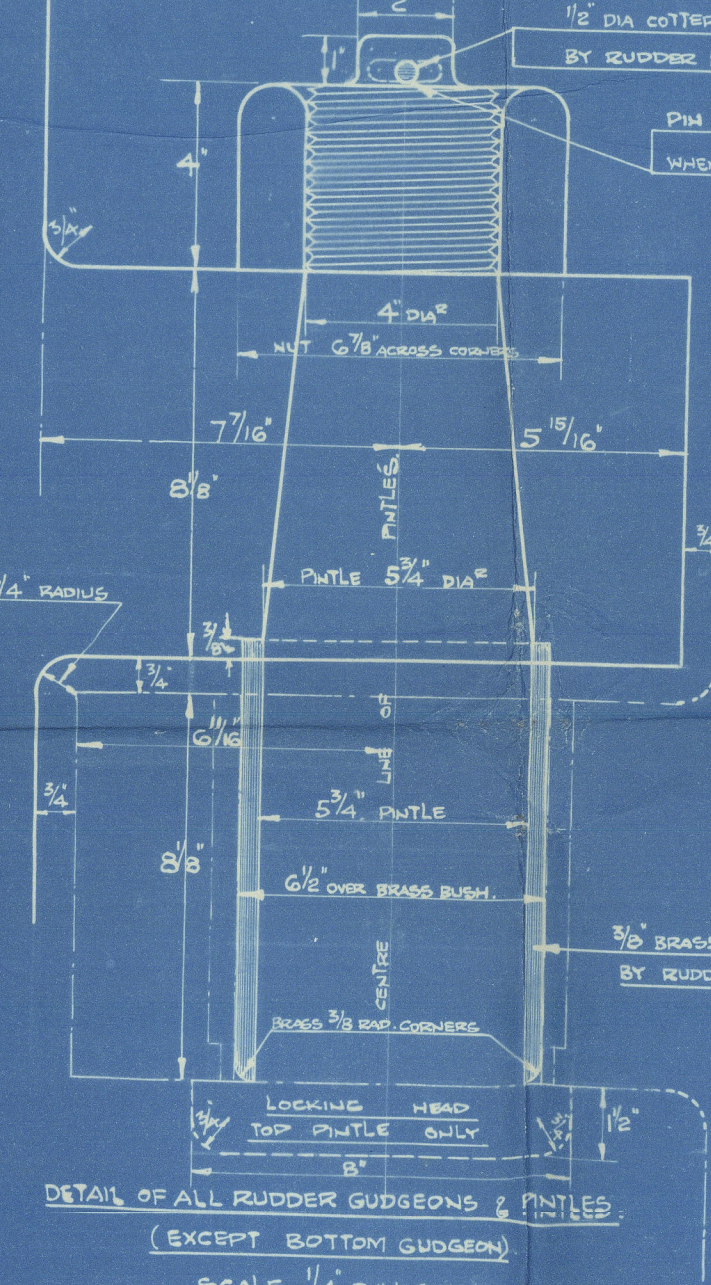
NOTE - WHEN PLATING RUDDER, 1/8\"/>



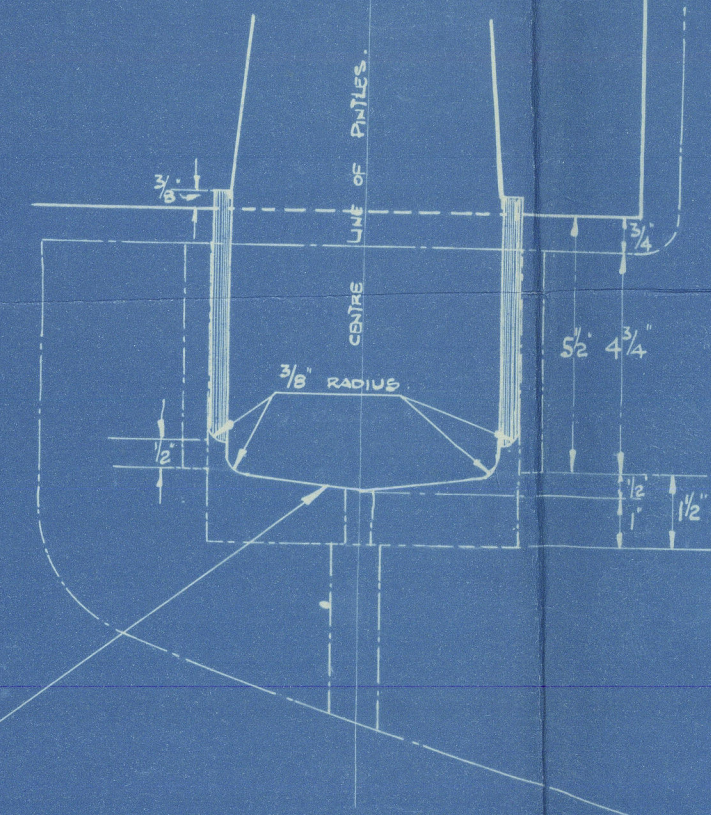
ELEVATION OF RUDDER STOCK



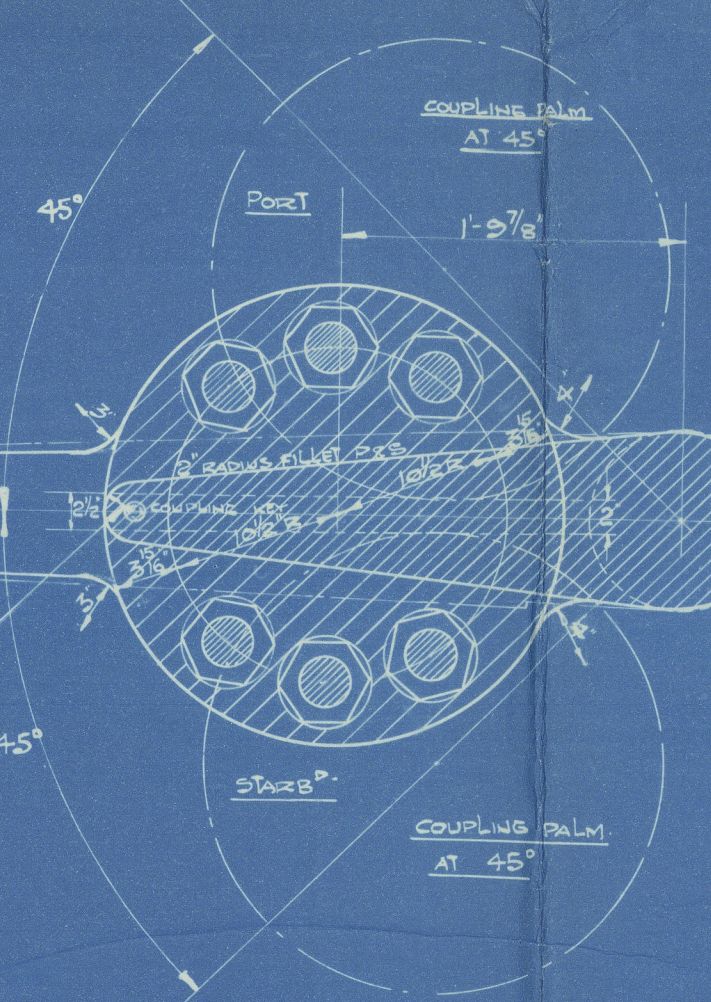
NOTE - ALL BUTYR TO BE SUPPLIED FROMLIST
 BY RUDDER WORKS, BUTYR TO BE OF STEEL
 MAKE AND SPECIFICALLY FITTED AS PER DETAILS.
 RUDDER BUTYR MUST BE TURNED IN OUR PRESS
 AND PROPERLY SHAPING ON BUTYR.



DETAIL OF ALL RUDDER GUSSETS & BUTYR
 (ELEVATION BOTTOM GUSSET)
 SCALE 1/4\"/>



DETAIL OF BOTTOM GUSSET & BROWWIDECK
 SCALE 1/4\"/>



RUDDER COUPLING TO BE SUPPLIED COMPLETE BY RUDDER WORKS
 COUPLING PARTS SURFACES TO BE GRINDED

APPROVED for 930
 LLOYD'S REGISTER OF SHIPPING
 H. Hallam
 DATE 19/4/39

APPROVED
 LLOYD'S REGISTER OF SHIPPING
 H. Hallam
 DATE 27.5.39

④

Lithgow's LTD

Nº 906 - 930.

RUDDER



"Cape Bleat"
Greenock Rpt. No. 20790

930

"CAPE HAWKE"

GREENOCK 1ST ENTRY REPORT Nº 21344

PLANS TRANSFERRED
TO SISTER VESSEL

CAPE HAWKE



© 2021

Lloyd's Register
Foundation

010924-010932-0087