

FOR CLASSIFICATION PURPOSES ONLY

65692.

## LLOYD'S REGISTER OF SHIPPING

C.W.G. 954

Index No. ....  
(For London Office only.)

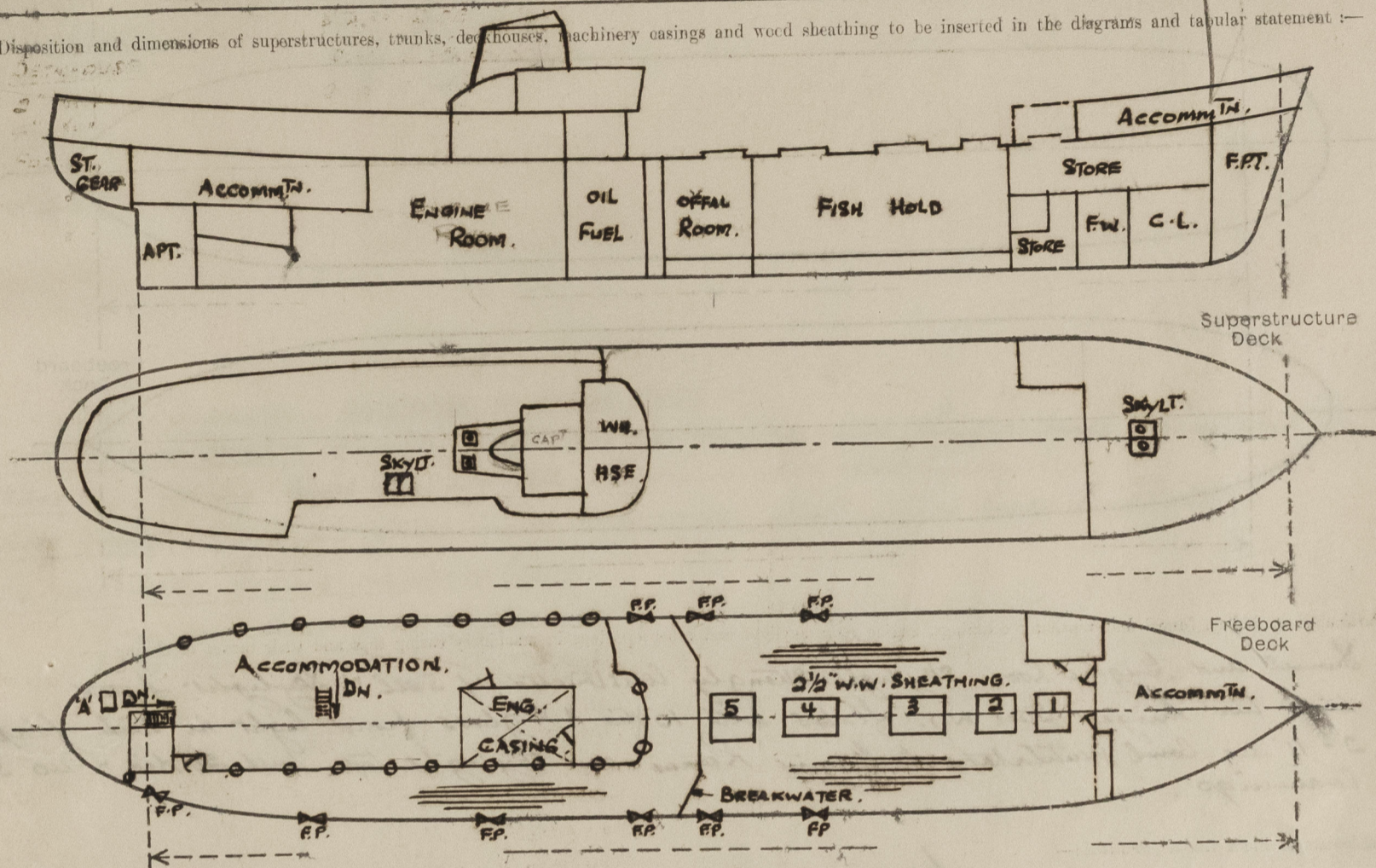
## SURVEYS FOR FREEBOARD

(CONDITIONS OF ASSIGNMENT)

TO ACCOMPANY  
HULL FIRST ENTRY  
REPT. NO. 65692

Ship's Name "ARUM" Port of Survey HULL  
 Official Number ✓ Surveyor's Signature W. Lind.  
 Nationality and Port of Registry SOUTH AFRICAN - CAPE TOWN. Date of Survey WHILE BUILDING.

Disposition and dimensions of superstructures, trunks, deckhouses, machinery casings and wood sheathing to be inserted in the diagrams and tabular statement :-



Particulars of Superstructures, Trunks, Casings, Deckhouses.

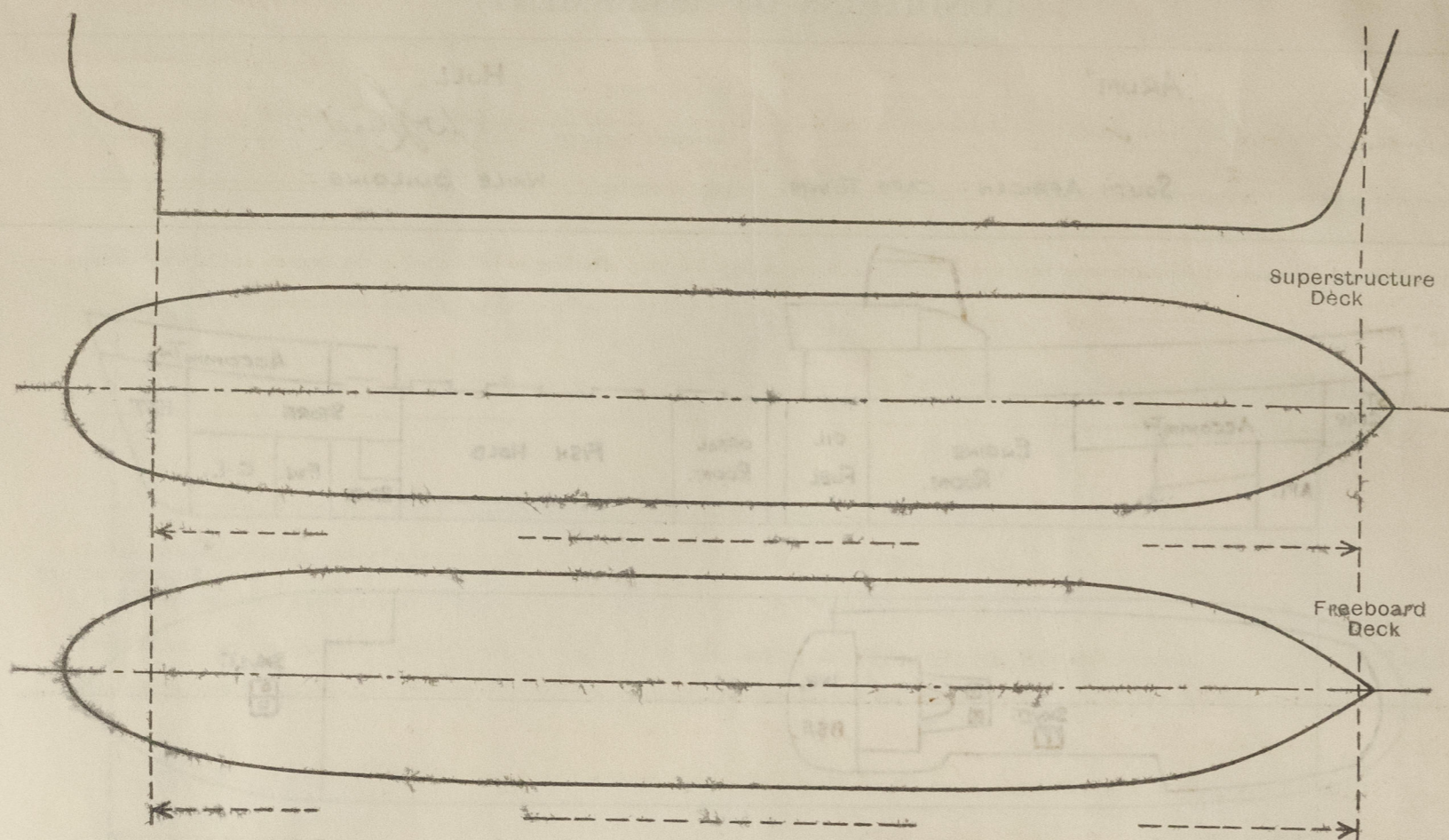
	Coaming	Plating	Stiffeners	Spacing	End Attachments of Stiffeners	Size of Openings	Height of Sills	Height, Beam to Beam
Poop Bulkhead ...	✓	✓	✓	✓	✓	✓	✓	✓
Raised Quarter Deck Bulkhead ...	✓	✓	✓	✓	✓	✓	✓	✓
Bridge, After Bulkhead ...	✓	✓	✓	✓	✓	✓	✓	✓
Bridge, Forward Bulkhead ...	✓	✓	✓	✓	✓	✓	✓	✓
Forecastle Bulkhead ...	✓	25" ✓	3" x 3" x 30' 0" A. / 2'-6"	✓	NONE	4'-10" x 2'-0"	19"	7'-0"
Trunk, Aft ...	✓	✓	✓	✓	✓	✓	✓	✓
Trunk, Forward ...	✓	✓	✓	✓	✓	✓	✓	✓
Exposed Machinery Casings on Freeboard or Raised Quarter Decks ...	31" ✓	26" ✓	4" x 3" x 38' 0" A. / 1'-11" / 2'-2" / BKT - TOP.	✓	✓	NONE	✓	4'-6" / 8'-0"
Exposed Machinery Casings on Superstructure Decks ...	✓	✓	✓	✓	✓	✓	✓	✓
Machinery Casings within DECKHOUSE ...	✓	26" / 31" ✓	4" x 3" x 38' 0" A. / 1'-7" / 2'-6"	✓	NONE	5'-0" x 1'-9"	18"	4'-6" / 8'-0"
Deckhouses and Pump Room Entrances	FRONT 31" ✓	31" ✓	4" x 3" x 38' 0" A. / 1'-2" / 2'-0" / BKT T. & B.	✓	✓	4'-3" x 1'-10"	18"	7'-3" / 8'-6"
	SIDE 31" ✓	25" ✓	4" x 3" x 38' 0" A. / 1'-10" / 2'-6" / BKT TOP.	✓	✓	✓	✓	✓

Particulars of Closing Appliances (state if capable of being manipulated from both sides).

Poop Bulkhead ...	✓
Raised Quarter Deck Bulkhead ...	✓
Bridge, After Bulkhead ...	✓
Bridge, Forward Bulkhead ...	✓
Forecastle Bulkhead ...	ONE HINGED HARDWOOD DOOR 2" THICK. OPERATED BOTH SIDES. ONE HINGED STEEL W.T. DOOR OPERATED BOTH SIDES.
Exposed Machinery Casings on Freeboard or Raised Quarter Decks ...	NO OPENINGS.
Exposed Machinery Casings on Superstructure Decks DECKHOUSE ...	✓
Machinery Casings within DECKHOUSE ...	TWO HINGED STEEL W.T. DOORS OPERATED BOTH SIDES.
Deckhouses and Pump Room Entrances	ONE HINGED STEEL W.T. DOOR OPERATED BOTH SIDES.

# PARTICULARS OF PROTECTION TO OPENINGS, ETC.

The following diagrams should be used to indicate the positions of cargo and coaling hatchways, gangway, cargo and coaling ports, side scuttles, scuppers, ventilators, companionways, etc., which would affect the seaworthiness of the ship :-



Particulars of Riddle, Funnel and ventilator coamings, engine room skylight and other openings in machinery casing tops and their means of closing :-

Funnel and Engine Room skylight strongly constructed of steel. Skylight fitted with two hinged steel w.t. flaps with 10" dia A.P. glass fixed light in each flap. 2-11" dia. cone ventilators to engine room on skylight top with 24" dia x 140" steel coamings.

Particulars of Flush Bunker Scuttles :-

none.

Particulars of Companionways :-

Stairway within deckhouse to fore. end of cabin flat with 15" steel coaming. Companionway within deckhouse to aft end of cabin flat with 15" steel coaming and hinged hardwood door operated both sides.

Particulars of Ventilators in exposed positions on freeboard and superstructure decks :-

## FORECASTLE

4-5" square Goose-neck Ventilators 6 1/8" high (Steel).  
2-9" dia. Launch Head Ventilators 3'-0" high (Steel).

Ventilators supplied with Canvas covers.

## BOAT DECK.

14-5" square Goose-neck Ventilators 6" high (Steel).  
4-6" dia. brass mushroom Ventilators 3" high.  
1-18" dia. mushroom Vent (Mechanical Ventilation) 24" high.

Particulars of Air Pipes in exposed positions on freeboard, raised quarter, or superstructure decks :-

## FORECASTLE

2-2 1/2" dia. 6" high.  
1-3" dia. 6" high.

## UPPER DECK

6-2 1/2" dia. 4'-0" / 3'-0" high.  
2-4" dia. 7'-6" high.  
1-3" dia. 6'-6" high.  
2-3" dia. 2'-6" high.  
1-2" dia. 6'-0" high.

## BOAT DECK

1-2" dia. 3" high.

Air pipes to oil fuel tanks fitted with loose gauge and supplied with Canvas covers.  
Remaining air pipes fitted with wood ball float valves or wood plugs.  
Air pipes over 3'-0" high efficiently stayed.

Particulars of Gangway Cargo and Coaling Ports :-

none.

Particulars of Scuppers and Sanitary Discharge Pipes :- no overboard discharges from spaces below upper deck.  
Discharges from forecastle tween decks and deckhouse to overboard below upper deck with brass storm valves at ship's side as follows :-

## PORT SIDE

### FROM DECKHOUSE

2 @ 2" dia.  
1 @ 4" dia.

### FROM FORE

1 @ 2" dia.  
1 @ 4" dia.

## STARBOARD SIDE

### FROM DECKHOUSE

2 @ 2" dia.  
1 @ 4" dia.

Particulars of Side Scuttles and Deadlights :- DECKHOUSE ON UPPER DECK :-

PORT SIDE (AT SHIP'S SIDE) - 9'-10" dia. fixed brass side scuttles with hinged brass deadlights.  
STARBOARD SIDE :- 7'-10" dia. brass opening side scuttles - no deadlights.  
DK. HOUSE FRONT 2-10" dia. fixed brass side scuttles with hinged brass deadlights.

EXPOSED MACHINERY CASING ON UPPER DECK

1-10" dia. brass fixed light with hinged brass deadlight.  
1-10" dia. brass opening side scuttle with hinged brass deadlight.

Vertical distance of SBL of lowest side scuttle above top of keel  
Distance from amidships to centre of lowest side scuttle

none below upper deck.

Particulars of Guard Rails and Bulwarks :-

## UPPER DK.

Steel bulwark 3'-6" - 5'-3" high x 3 1/2" thick. with 6 x 3 x 3/8 B.A. Rail has over 4 x 3/8" BP. or efficiently stiffened 3/8" plate stays spaced 5'-6" apart.

## FORE DK.

3 Guardrails with stanchions 3'-3" high and 4'-6" apart.

## BOAT DK.

2 Guardrails with stanchions 3'-3" high and 4'-6" apart.

Particulars of Gangways, Lifelines, etc. :-

Storm handrails fitted on deckhouse side

Provision for rigging lifeline between deckhouse and forecastle.

## Particulars of Freeing Arrangements.

	Length of Bulwark	Height of Bulwark	Size of Freeing Ports	Number each side	Area each side	Rate area each side
AFT OF BREAKWATER.	P. 9'-0"	P. 4'-0"	P. 2'-0" x 1'-0"	P. 1	P. 2 sq	
After Well ...	S. 58'-0"	S. 3'-6" / 4'-0"	S. { 2'-9" x 1'-0" 3'-6" x 1'-0"	S. { 3	S. 10.25 sq	
FORD. OF BREAKWATER.						
Forward Well ...	48'-6"	4'-0" / 5'-3"	2'-6" x 1'-0"	2	5 sq.	

State position of each freeing port ... After Well: AFT OF BREAKWATER. 8'-5'-6", 19'-0", 40'-0", 56'-0"  
(F. and A. position and height above deck edge) Forward Well: FORD OF BREAKWATER. :- 3'-0", 15'-6" F.P.s 8' above deck.

State whether the freeing ports are fitted with shutters, bars, or rails, and give particulars of such :-

Additional area where sheer is less than standard.

Freeing ports in aft well fitted with hinged steel shutters except aftermost freeing port (S.S.) which has vertical bars 3/4" dia. 3' apart.  
Freeing ports in fore well fitted with vertical sliding shutters, safety chain and horizontal protection bar.

8 x 2 1/2" Scuppers through stringer angle in aft well. 5 Star. Port.

MAR 1960

# PARTICULARS OF PROTECTION TO OPENINGS, ETC.

HATCHWAYS ON FREEBOARD AND SUPERSTRUCTURE DECKS.						
						A (WITHIN DECKHOUSE)
Description of Hatchway	...	...	...	...	...	TO STEERING GEAR.
Dimensions of Hatchway	...	...	...	...	...	...
COAMINGS	Height above Deck	...	...	...	...	...
	Thickness	...	...	...	...	...
	Stiffeners	...	...	...	...	...
	Brackets, Stays	...	...	...	...	...
HATCH BEAMS	Number	...	...	...	...	...
	Spacing	...	...	...	...	...
FORE AND AFTERS	Number	...	...	...	...	...
	Spacing	...	...	...	...	...
HATCH COVERS	Material	...	...	...	...	...
	Thickness	...	...	...	...	...
Spacing of Cleats	...	...	...	...	...	...
Number of Tarpaulins	...	...	...	...	...	...

\*Are wood fore and afters steel shod at all bearing surfaces? ☒ YES.

Are battens and wedges efficient and in good condition? ☒ YES.

Are tarpaulins in good condition and in accordance with rule requirements? ☒ YES.

Are lashings provided in accordance with rule requirements? ☒ YES.

Are wood covers fitted with galvanised end bands? ☒ NO.

Particulars of any special features:— (Timber Deck-cargo Fittings, Skylights, Sewage Systems, Ash Ejectors, Rubbish Shoots, etc.)

Galley skylight on boat deck strongly constructed of steel with 2 strong brass rectangular opening lights.

Skylight on forecastle deck to forecastle accommodation strongly constructed of steel; no flaps fitted; 4-10 dia fine brass sidescutters fitted with protection bars on outside - no deadlights fitted.

2-12x4; 4-12x10; 2-21x14 strong presumatic decklights on deckhouse top.