



ARUM

Yard No 954.

Structural Sections.

Scale :- 3/4" = 1 Foot.

DIMENSIONS :- L.B.P. - 125'-0", B.M.D. - 26'-6", D.M.D. 13'-9".

SINGLE SCREW FLUSH DECK DIESEL TRAWLER TO CLASS LLOYDS + 100A. TRAWLER.

DATE SUBMITTED TO LLOYDS: 24-4-59

DATE APPROVED BY LLOYDS: 10-6-59

RIVETING :-
BULKHEAD TO TOP EDGE OF SHEETSTAKE - 2" DIA. SEAM, 3/4" DIA.
FLOORS TO FRS - 2" DIA. FRS - 3/4" DIA. 2 DIA. APART, 5 DIA. IN E.C. DIA. THRO
FLOORS & SHELL IN WAY OF GAZBOARDED STRAKE IN FWD 1/2" DIA. 5 DIA. APART
FRS TO SHELL IN AFT PEAK 3/4" DIA. SPACED 6 DIA. 7 DIA. ELSEWHERE.
2" DIA. KEEL, STEM & STEINFRAME 1" DIA. DIA. SPACED 5 DIA. MAX.
BEAMS TO DK, 3/4" DIA. 5/8" DIA. IN OIL TANKS & PEAKS, 1/2" DIA. IN FLOOR DL.
7 DIA. ELSEWHERE.

WELDING :-
ALL BUTTS & SEAMS WELDED, FOR DETAILS OF PLATE EDGE PREPARATION SEE
'SHELL EXPANSION' FRAMES TO SHELL BETWEEN GALLONS, FROM UPPER TORN
OF BILGE TO DK, IN F.W. & OIL TANKS, TO BE WELDED.
FRAMES IN FORE PEAK WELDED TO SHELL.

GENERAL :-
SHELL PLATING TO BE INCREASED IN THICKNESS FOR 6" AFT WHERE LIABLE TO DAMAGE FROM FISHING
GASK, SHELL TO BE MAINTAINED AT MIDSHIP THICKNESS, FOR 2" WHERE LIABLE TO POUNDING DAMAGE
FLOORS & SHELL PANEL ALSO TO BE STIFFENED. EJECTION HOLES TO BE KEPT TO A MINIMUM
& TO BE WELDED UP SOLID ON COMPLETION.
ALL WELDING & RIVETING WORK & PREPARATIONS TO BE TO SURVEYOR'S SATISFACTION.

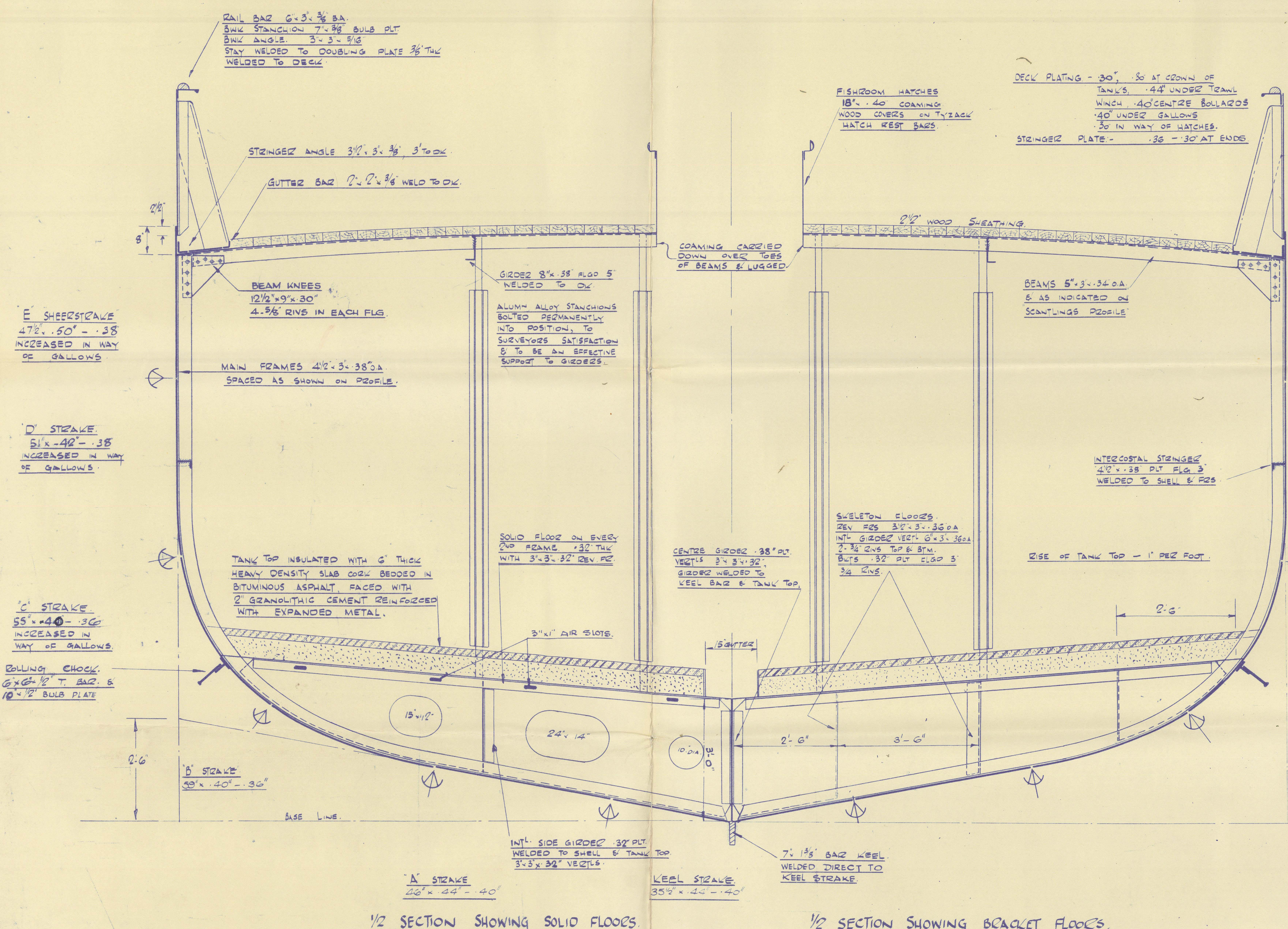
LLOYDS NUMERALS.

L	125.00
B	26.50
D	13.75
B+D	40.25
L(B+D)	5031.25
LxD	1718.75
L/D	9.09
L/B	4.72

EQUIPMENT (NUMERAL)

1ST BOWER ANCHOR STOCKLESS - 7 1/4 CWTs.
2ND BOWER ANCHOR STOCKLESS - 7 1/4 CWTs.
1 KEDGE ANCHOR EX-STOCK - 3 CWTs.
120 FATHOMS 1 1/8" STUD LINK CHAIN CABLE.
2-60 FATHOM LENGTHS OF 4" COMBINATION WIRES
TO HAVE A BREAKING STRAIN NOT LESS THAN 8.3 TONS
AS PREVIOUSLY APPROVED.

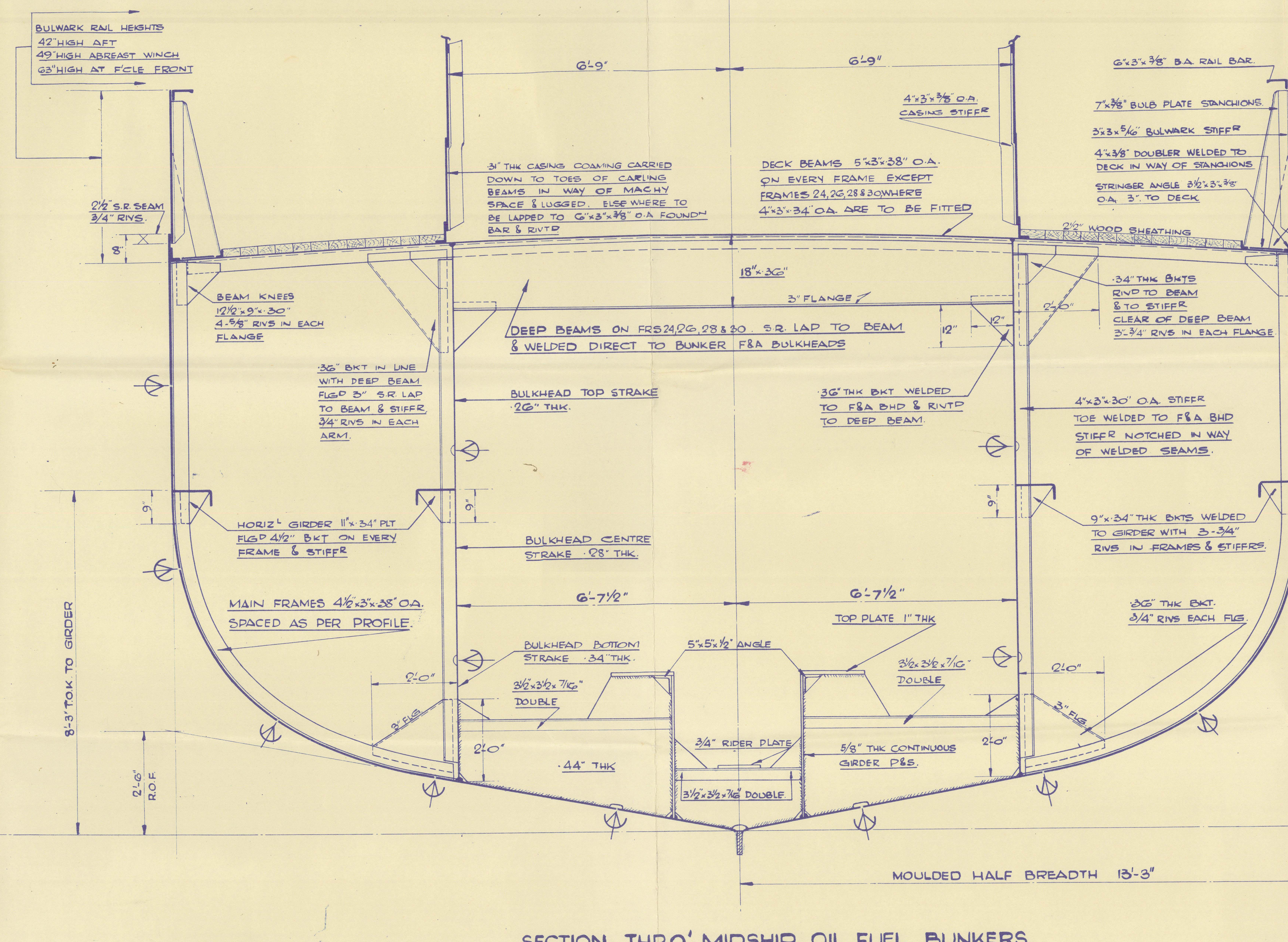
ROUND OF BEAM = 7"



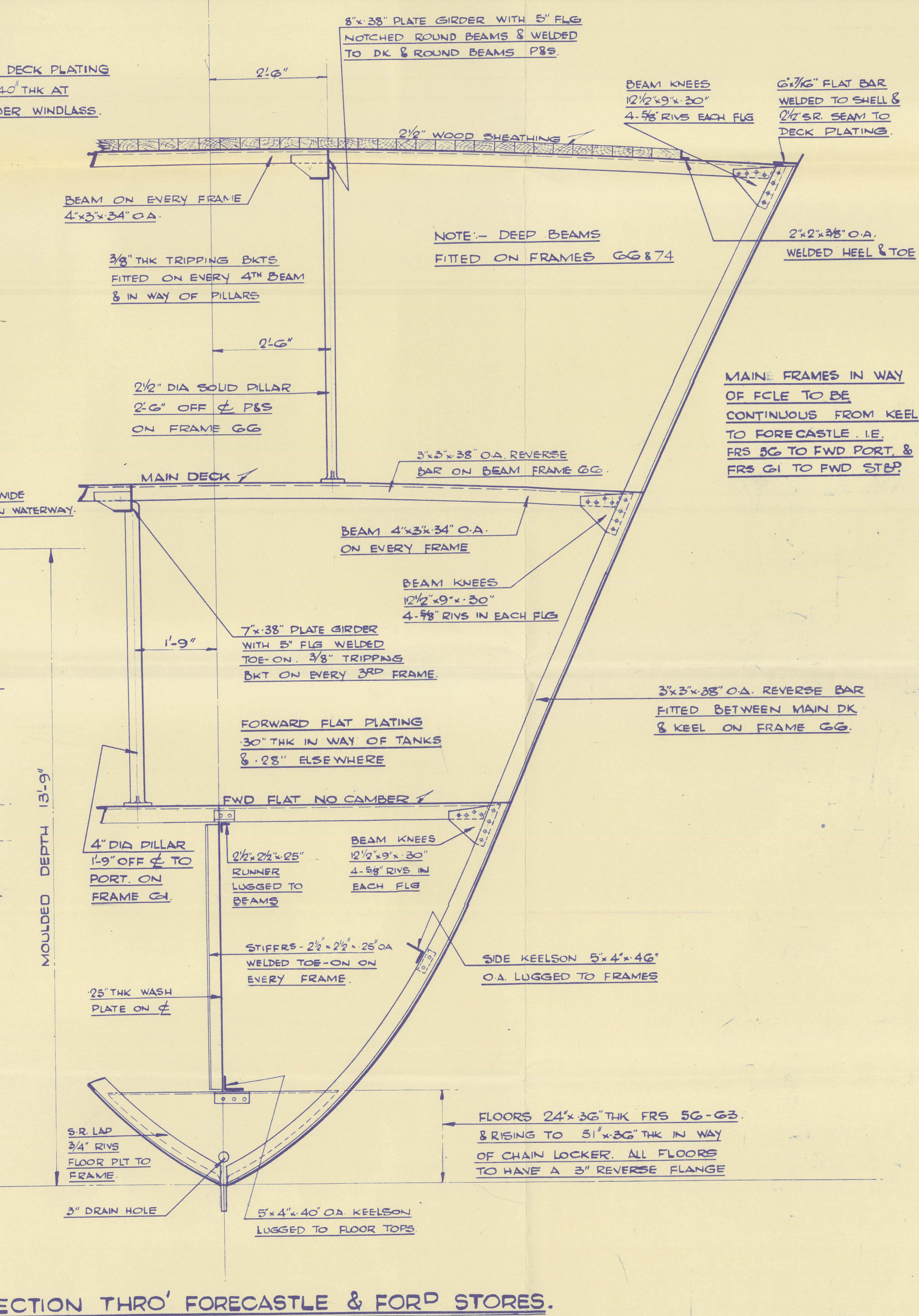
1/2 SECTION SHOWING SOLID FLOORS.

1/2 SECTION SHOWING BRACKET FLOORS.

SECTION THRO FISHROOM.



SECTION THRO' MIDSHIP OIL FUEL BUNKERS.



SECTION THRO' FORECASTLE & FORD STORES.

"ARUM" ★

COOK WELTON & GEMMELL.

YARD NO 954.

STRUCTURAL SECTIONS
(AS BUILT.)

HUL. F.E. REPT. NO. 65692.

RECORDS DEPT.,
LONDON.

2



© 2020

Lloyd's Register
Foundation

010913-010923-0064